

Stock No. 26273

FOREST CO SURVEYOR

FILE # 391420-19890504

DATE _____ BY _____

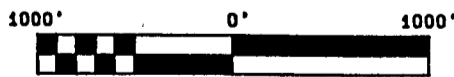
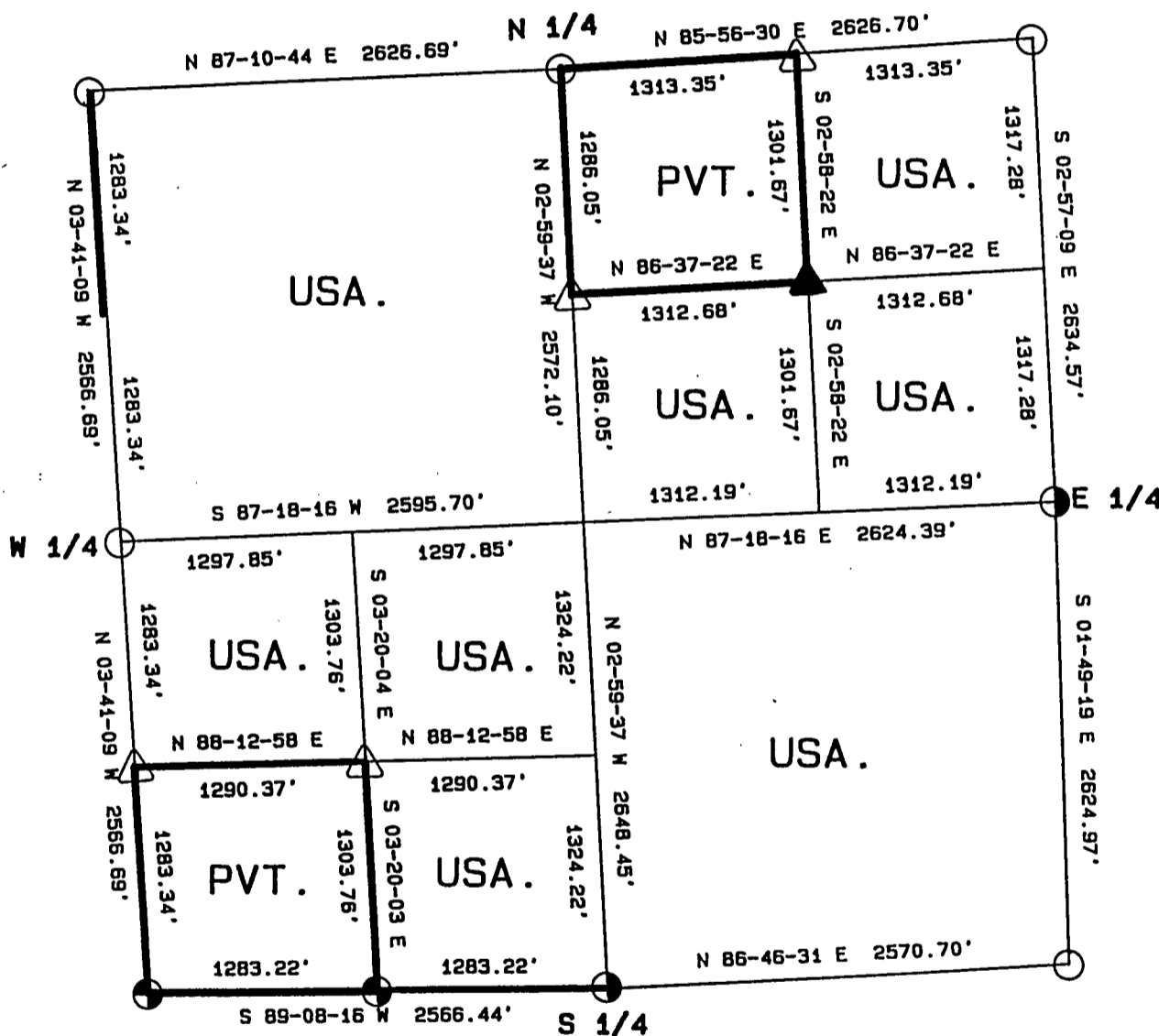
PLAT OF SURVEY FOR CERTIFIED LAND CORNER

RESTORATION AND ESTABLISHMENT

BEING THE CORNERS FOR THE NW 1/4, THE NE 1/4 AND S 1/2 OF THE NE 1/4,
THE N 1/2 AND SE 1/4 OF THE SW 1/4, AND THE SE 1/4

SECTION 20, TOWNSHIP 39 NORTH, RANGE 14 EAST

COUNTY OF FOREST, STATE OF WISCONSIN



GRAPHIC SCALE - 1" = 1000'

LEGEND

- 2 1/2 INCH DIAMETER ALUMINUM PIPE MONUMENT 36 INCHES LONG WITH AN ALUMINUM CAP.
- 2 1/2 INCH DIAMETER ALUMINUM PIPE MONUMENT 60 INCHES LONG WITH AN ALUMINUM CAP.
- △ 1 INCH DIAMETER ALUMINUM PIPE MONUMENT 36 INCHES LONG WITH AN ALUMINUM CAP.
- ▲ 1 INCH DIAMETER ALUMINUM PIPE MONUMENT 60 INCHES LONG WITH AN ALUMINUM CAP.
- ⊕ 2 1/2 INCH DIAMETER GALVANIZED IRON PIPE MONUMENT 36 INCHES LONG WITH BRASS CAP.
- ▬ BOUNDARY LINE MARKED TO FOREST SERVICE STANDARD.

Stock No. 26273

T39N R14E - SECTION 20

page 2 of 5

SURVEY NOTES

This plat of survey for Section 20, Township 39 North, Range 14 East is the product of a Photogrammetric Project linked with Global Satellite Positioning procedures to establish the co-ordinate values used as control to recover and restore lost Section and Quarter Section Corners and to establish positions for Sixteenth and Property Corners within the Sections in this project area.

The 10 G.P.S. Stations were assigned State Plane Co-ordinate Values. The values were then transferred to the target locations for ground control through photogrammetric bridging.

All bearings are geodetic bearings based on the Wisconsin North Zone Lambert Projection and have been transferred to the boundary lines within this project using a Wild North Seeking Gyro. All distances are geodetic grid distances.

This Survey was made by the U.S. Department of Agriculture, Forest Service, for the purpose of recovering, restoring, establishing, marking and perpetuating the corners and boundary lines of U.S. Government Land on the sections within this project area.

The Original Government Survey of this township was made in 1865 by William E. Daugherty.

The field notes of this survey and a copy of this and the remaining sections in this project area are on file in the Forest Supervisor's Office at Rhinelander, Wisconsin, and the District Ranger's Office at Florence, Wisconsin.

CORNERS RECOVERED AND RESTORED1. Northeast Section Corner

Corner position is restored using single proportionate measurements and the center-line of F.R.#2168.

Corner References:

;	R. Pine	18"	N37°E	38.08 feet
	R. Pine	6"	S 6°E	39.33 feet
	R. Pine	6"	S37°W	26.53 feet
	Steel Sign Post		South	20.00 feet

2. East Quarter Corner

Corner position is restored by accepting a 5"x5" wood post and a scribed tamarack stump.

Corner References:

Reference Monument		N76°W	26.29 feet
Tamarack(stump)		N40°W	17.25 feet
Steel Sign Post		SW	±1.00 feet

No bearing trees available

3. Southeast Section Corner

Corner position is restored using recovered evidence and records of survey from George Melindy's survey in 1917.

Corner References:

Aspen	13"	N72°E	36.17 feet
Aspen	12"	S29°E	38.41 feet
Spruce	16"	S60°W	71.82 feet
W. Birch	14"	N23°W	10.97 feet
Steel Sign Post		South	±1.50 feet

Stock No. 26273

T39N R14E - SECTION 20

page 3 of 5

4. South Quarter Corner

Corner position is restored by accepting a 4"x4" wood post and local bearing tree evidence.

Corner References:

Cedar	10"	N85°W	14.87 feet
Cedar	12"	S16°W	32.98 feet
Steel Sign Post		NE	±1.00 feet

5. Southwest Section Corner

In 1965, Jean Resvick restored the corner position from original bearing tree evidence.

1965 Corner References recovered:

Sugar	16"	N36°E	32.39 feet
Sugar	8"	S12°E	11.55 feet
Sugar	8"	S71°W	23.04 feet
Sugar(snag)		N20°W	31.00 feet
Steel Sign Post		South	2.00 feet

New Corner Reference:

Maple	13"	N 2°W	23.57 feet
-------	-----	-------	------------

6. West Quarter Corner

Corner position is restored at proportionate distance and on line between the Northwest and Southwest Section Corners.

Corner References:

Aspen	14"	N40°W	23.38 feet
Aspen	16"	N78°E	9.94 feet
Steel Sign Post		South	±1.00 feet

7. Northwest Section Corner

Corner position is restored at the intersection of F.R.#2168 and F.R.#2444.

Corner References:

Maple	10"	N54°E	61.80 feet
Ash	14"	S70°E	56.02 feet
Hemlock	9"	S 1°E	60.80 feet
Maple	3"	N60°W	58.22 feet
Steel Sign Post		South	20.00 feet

8. North Quarter Corner

Corner position is restored at proportionate distance between the Northeast and Northwest Section Corners and in the center-line of F.R.#2168.

Corner References:

Maple	8"	S48°E	59.97 feet
Maple	7"	S30°W	58.15 feet
Steel Sign Post		N 2°W	42.46 feet

CORNERS ESTABLISHED1. East Sixteenth Corner between Sections 20 and 29

Corner position is established by accepting a recovered wood post from George Melindy's survey in 1917.

Corner References:

Spruce	12"	N67°E	31.75 feet
Spruce	9"	S50°W	18.35 feet
Steel Sign Post		N36°W	1.12 feet

Stock No. 26273

T39N R14E - SECTION 20

page 4 of 5

2. West Sixteenth Corner between Sections 20 and 29

Corner position is established at mid-point and on line between the Southwest Section Corner and the South Quarter Corner.

Corner References:

Cedar	14"	N 9°E	19.27 feet
Cedar	15"	S21°E	38.03 feet
Steel Sign Post		East	0.80 feet

3. South Sixteenth Corner between Sections 19 and 20

Corner position is established at mid-point and on line between the Southwest Section Corner and the West Quarter Corner.

Corner References:

S. Maple	7"	S84°W	8.11 feet
S. Maple	9"	N25°W	6.86 feet
Steel Sign Post		N45°E	0.87 feet

4. North Sixteenth Corner between Sections 19 and 20

Corner position is established at mid-point and on line between the Northwest Section Corner and the West Quarter Corner.

Corner References:

Y. Birch	13"	N60°E	10.09 feet
B. Ash	12"	S17°E	11.83 feet
Steel Sign Post		SE	±1.00 feet

5. East Sixteenth Corner between Sections 17 and 20.

Corner position is established at mid-point and on line between the Northeast Section Corner and the North Quarter Corner.

Corner References:

Balsam	8"	N42°E	38.33 feet
Ash	4"	S 5°W	41.24 feet
Steel Sign Post		N50°W	0.77 feet

6. Center-North Sixteenth Corner

Corner position is established at mid-point and on line between the North Quarter Corner and the Center-Quarter Corner.

Corner References:

Balsam	6"	South	41.75 feet
Cherry	7"	N62°W	44.28 feet
Steel Sign Post		S46°W	0.86 feet

7. Northeast Sixteenth Corner

Corner position is established at the intersection of straight lines between opposing sixteenth corner positions on the perimeter of the Northeast Quarter of the Section.

Corner References:

Cedar	8"	N80°E	20.02 feet
W. Spruce	7"	S43°E	26.87 feet
Steel Sign Post		S30°W	1.02 feet

8. Southwest Sixteenth Corner

Corner position is established at the intersection of straight lines between opposing sixteenth corner positions on the perimeter of the Southwest Quarter of the Section.

Corner References:

Basswood	10"	N 5°E	49.27 feet
Balsam	8"	S44°W	36.49 feet
Steel Sign Post		East	0.85 feet

Stock No. 26273

T39N R14E - SECTION 20

page 5 of 5

9. Property Corner #1

Corner position is established at 321.34 feet from the East Sixteenth Corner
This distance was arrived at by dividing the NE-NE into four 10 acre parcels.

Corner References:

Aspen	14"	S28°E	30.05 feet
Maple	7"	S21°W	37.38 feet
Steel Sign Post		SW	±1.00 feet

SURVEYOR'S AFFIDAVIT

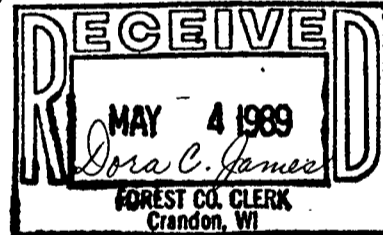
State of Wisconsin)
County of Forest) ss

I, William B. Cochrane, Land Surveyor, U.S.D.A. Forest Service, and a Registered Land Surveyor in the State of Wisconsin, hereby certify that I have surveyed and sub-divided Section 20, Township 39 North, Range 14 East, Fourth Principal Meridian, State of Wisconsin.

The plat map and survey notes herewith are a correct representation of the land surveyed and sub-divided. I have surveyed and sub-divided said section in accordance with the rules for the Survey of Public Lands and the Statutes of the State of Wisconsin.



William B. Cochrane
Land Surveyor, U.S.D.A. Forest Service
R.L.S. State of Wisconsin
Certificate #S-1107

SURVEYOR'S AFFIDAVIT

State of Wisconsin)
County of Forest) ss

I, Gary L. Pisoni, Contract Land Surveyor for the U.S.D.A. Forest Service, and a Registered Land Surveyor in the State of Wisconsin, hereby certify that I have surveyed the boundary lines and monumented the Sixteenth Corners of Section 20, Township 39 North, Range 14 East, Fourth Principal Meridian, State of Wisconsin.

I have surveyed and monumented said Section in accordance with the rules for the Survey of Public Lands, the Statutes of the State of Wisconsin and the subdivision field notes computed by William B. Cochrane, Land Surveyor, U.S.D.A. Forest Service.



Gary L. Pisoni
Land Surveyor
R.L.S. State of Wisconsin
Certificate #S-1634

Survey requested by:

[Signature]

District Ranger

3-22-89

Date

Date of Survey: 1988