

Stock No. 26273

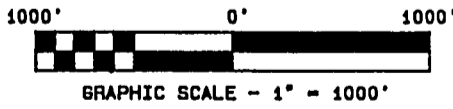
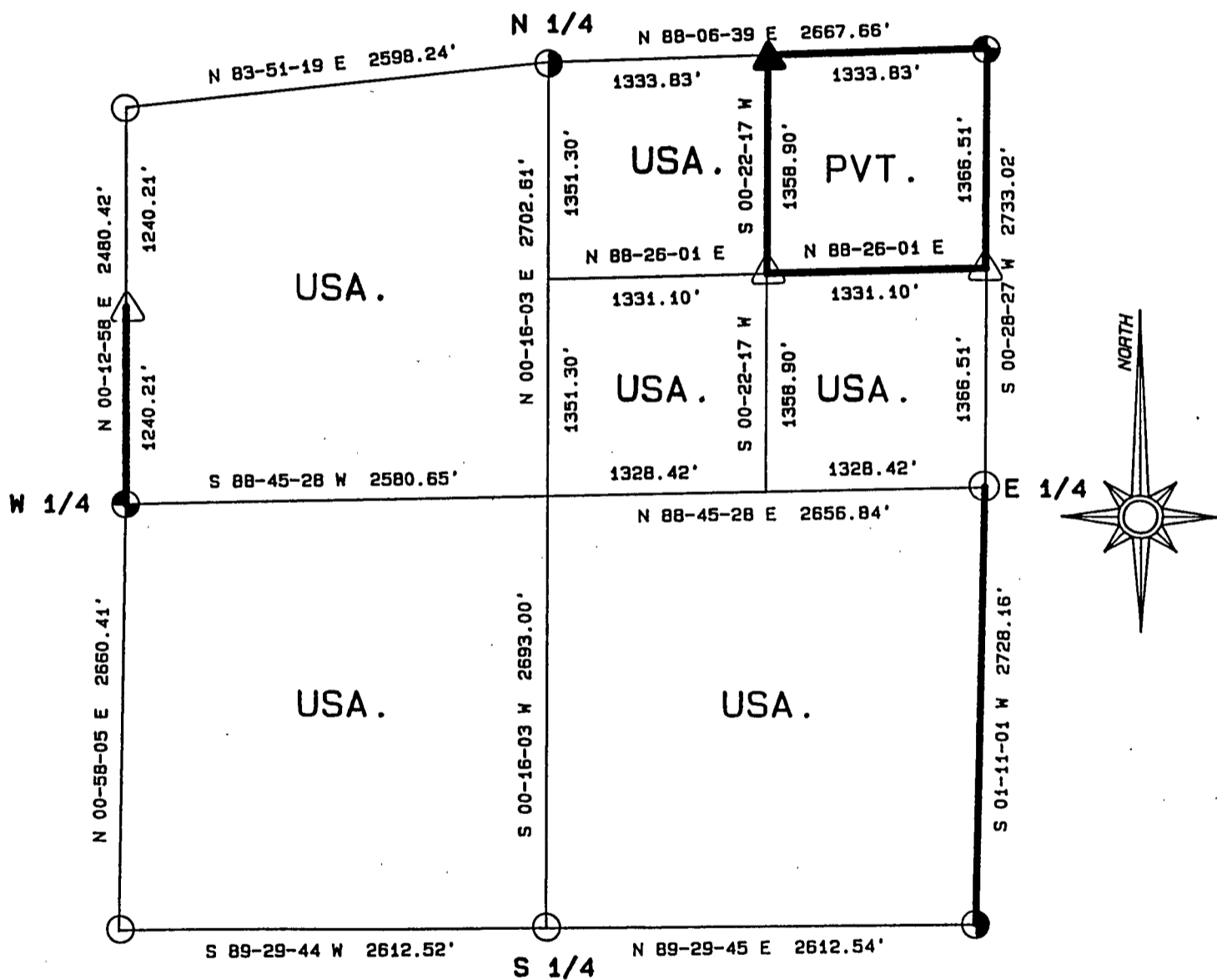
FOREST CO SURVEYOR
 FILE # 391427-19890504
 DATE _____ BY _____

PLAT OF SURVEY FOR CERTIFIED LAND CORNER
 RESTORATION AND ESTABLISHMENT

BEING THE CORNERS FOR THE NW 1/4, THE S 1/2 AND NW 1/4 OF THE NE 1/4,
 THE SW 1/4 AND THE SE 1/4.

SECTION 27, TOWNSHIP 39 NORTH, RANGE 14 EAST

COUNTY OF FOREST, STATE OF WISCONSIN



LEGEND

- 2 1/2 INCH DIAMETER ALUMINUM PIPE MONUMENT 36 INCHES LONG WITH AN ALUMINUM CAP.
- ◐ 2 1/2 INCH DIAMETER ALUMINUM PIPE MONUMENT 60 INCHES LONG WITH AN ALUMINUM CAP.
- △ 1 INCH DIAMETER ALUMINUM PIPE MONUMENT 36 INCHES LONG WITH AN ALUMINUM CAP.
- ▲ 1 INCH DIAMETER ALUMINUM PIPE MONUMENT 60 INCHES LONG WITH AN ALUMINUM CAP.
- ◑ 2 1/2 INCH DIAMETER GALVANIZED IRON PIPE MONUMENT 36 INCHES LONG WITH BRASS CAP.
- BOUNDARY LINE MARKED TO FOREST SERVICE STANDARD.

Stock No. 26273

T39N R14E - SECTION 27

page 2 of 5

SURVEY NOTES

This plat of survey for Section 27, Township 39 North, Range 14 East is the product of a Photogrammetric Project linked with Global Satellite Positioning procedures to establish the co-ordinate values used as control to recover and restore lost Section and Quarter Section Corners and to establish positions for Sixteenth and Property Corners within the Sections in this project area.

The 10 G.P.S. Stations were assigned State Plane Co-ordinate Values. The values were then transferred to the target locations for ground control through photogrammetric bridging.

All bearings are geodetic bearings based on the Wisconsin North Zone Lambert Projection and have been transferred to the boundary lines within this project using a Wild North Seeking Gyro. All distances are geodetic grid distances.

This Survey was made by the U.S. Department of Agriculture, Forest Service, for the purpose of recovering, restoring, establishing, marking and perpetuating the corners and boundary lines of U.S. Government Land on the sections within this project area.

The Original Government Survey of this township was made in 1865 by William E. Daugherty.

The field notes of this survey and a copy of this and the remaining sections in this project area are on file in the Forest Supervisor's Office at Rhinelander, Wisconsin, and the District Ranger's Office at Florence, Wisconsin.

CORNERS RECOVERED AND RESTORED1. Northeast Section Corner

In 1974, Jean Resvick accepted a fence corner and 6"x 6" wood post as the best available evidence for restoring the corner position.

1974 Corner References recovered:

Maple	11"	N70°E	36.92 feet
Maple	12"	S62°E	24.44 feet
Maple	8"	S74°W	17.29 feet
Maple	6"	N21°W	36.91 feet
Steel Sign Post		NE	1.00 feet

2. East Quarter Corner

Corner position is restored by accepting a 3"x3"x36" wood post as the best available evidence for restoring the corner position.

Corner References:

Spruce	7"	N49°E	51.36 feet
Spruce	9"	S86°E	68.88 feet
Steel Sign Post		NE	1.00 feet

3. Southeast Section Corner

Corner position is restored by accepting a cedar post point and a fence line East as the best available evidence for restoring the corner position.

Corner References:

Spruce	4"	N18°E	31.52 feet
Spruce	6"	S45°E	41.27 feet
Spruce	4"	S30°W	27.40 feet
Spruce	5"	N39°W	37.93 feet
Steel Sign Post		NE	3.00 feet

Stock No. 26273

T39N R14E - SECTION 27

page 3 of 5

4. South Quarter Corner

Corner position is restored at mid-point and on line between the Southeast and Southwest Section Corners.

Corner References:

Maple	10"	N37°E	33.95 feet
Maple	12"	S63°E	19.17 feet
Steel Sign Post		NE	1.00 feet

5. Southwest Section Corner

Corner position is restored using lost corner proportionate methods between the West Quarter Corner of Section 27 and the Southeast Section Corner of Section 33, and between the South Quarter Corner of Section 28 and the Southeast Section Corner of Section 27.

Corner References:

Maple	9"	N28°E	9.68 feet
Maple	8"	S40°E	33.38 feet
Maple	11"	S24°W	18.48 feet
Basswood	11"	N49°W	17.75 feet
Steel Sign Post		North	0.30 feet

6. West Quarter Corner

In 1974, William B. Cochrane restored the corner position by accepting a 5"x5" scribed cedar post and original bearing tree evidence.

1974 Corner References recovered:

White Spruce	8"	S26°W	21.86 feet
White Spruce	8"	N70°W	7.65 feet
Iron Pipe	1"	South	1.00 feet
Steel Sign Post		North	1.70 feet

7. Northwest Section Corner

Corner position is restored using lost corner proportionate methods between the South Quarter Corner of Section 21 and the South Quarter Corner of Section 22, and between the East Quarter Corner of Section 21 and the East Quarter Corner of Section 28.

Corner References:

Maple	11"	S30°E	34.70 feet
Maple	10"	S61°W	19.99 feet
Maple	6"	N81°W	42.32 feet
Maple	8"	N72°W	40.97 feet
Steel Sign Post		NW	1.00 feet

8. North Quarter Corner

Corner position is restored by accepting a 3"x3"x36" wood post and original bearing tree evidence.

Corner References:

Hemlock	14"	S17°W	19.20 feet
Cedar	10"	N48°W	38.50 feet
Steel Sign Post		NE	1.00 feet

CORNERS ESTABLISHED1. Northeast Sixteenth Corner

Corner position is established at the intersection of straight lines between opposing Sixteenth Corners on the perimeter of the Northeast Quarter of the section.

Corner References:

S. Maple	13"	S 1°W	21.19 feet
Hemlock	13"	N42°W	30.02 feet
Steel Sign Post		SW	1.03 feet

Stock No. 26273

T39N R14E - SECTION 27

page 4 of 5

2. East Sixteenth Corner between Sections 22 and 27

Corner position is established at mid-point and on line between the North Quarter Corner and the Northeast Section Corner.

Corner References:

B. Spruce	3"	S77°E	31.91 feet
Squared Post	4"x4"	South	0.50 feet
Tamarack	3"	N12°W	12.70 feet
Steel Sign Post		NE	1.08 feet

3. North Sixteenth Corner between Sections 27 and 26

Corner position is established at mid-point and on line between the Northeast Section Corner and the East Quarter Corner.

Corner References:

S. Maple	8"	S72°E	26.10 feet
R. Maple	8"	S22°W	36.96 feet
Steel Sign Post		SE	1.24 feet

4. North Sixteenth Corner between Sections 27 and 28

Corner position is established at mid-point and on line between the Northwest Section Corner and the West Quarter Corner.

Corner References:

Y. Birch	8"	N62°E	38.43 feet
S. Maple	9"	S53°E	16.40 feet
Steel Sign Post		North	0.82 feet

Stock No. 26273

T39N R14E - SECTION 27

page 5 of 5

SURVEYOR'S AFFIDAVIT

State of Wisconsin)
County of Forest) ss

I, William B. Cochrane, Land Surveyor, U.S.D.A. Forest Service, and a Registered Land Surveyor in the State of Wisconsin, hereby certify that I have surveyed and sub-divided Section 27, Township 39 North, Range 14 East, Fourth Principal Meridian, State of Wisconsin.

The plat map and survey notes herewith are a correct representation of the land surveyed and sub-divided. I have surveyed and sub-divided said section in accordance with the rules for the Survey of Public Lands and the Statutes of the State of Wisconsin.



William B. Cochrane
Land Surveyor, U.S.D.A. Forest Service
R.L.S. State of Wisconsin
Certificate #S-1107

SURVEYOR'S AFFIDAVIT

State of Wisconsin)
County of Forest) ss

I, Gary L. Pisoni, Contract Land Surveyor for the U.S.D.A. Forest Service, and a Registered Land Surveyor in the State of Wisconsin, hereby certify that I have surveyed the boundary lines and monumented the Sixteenth Corners of Section 27, Township 39 North, Range 14 East, Fourth Principal Meridian, State of Wisconsin.

I have surveyed and monumented said Section in accordance with the rules for the Survey of Public Lands, the Statutes of the State of Wisconsin and the subdivision field notes computed by William B. Cochrane, Land Surveyor, U.S.D.A. Forest Service.

Gary L. Pisoni
Land Surveyor
R.L.S. State of Wisconsin
Certificate #S-1634

Survey requested by; [Signature]

3-22-89

District Ranger

Date

Date of Survey: 1988

