

Stock No. 26273

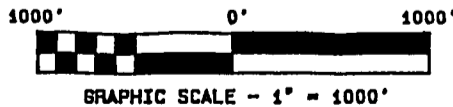
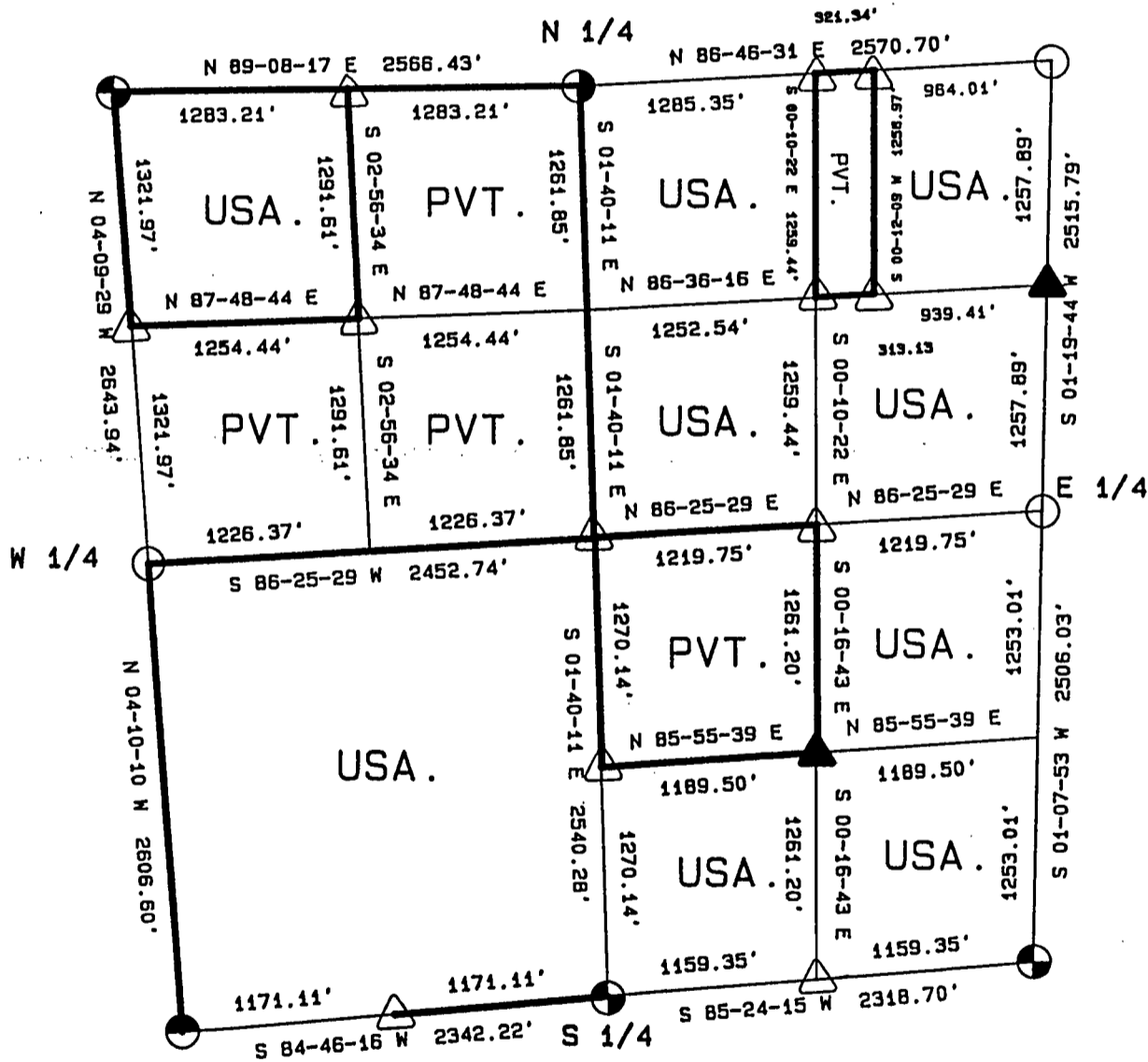
FOREST CO SURVEYOR
 FILE # 391429-19890504
 DATE _____ BY _____

PLAT OF SURVEY FOR CERTIFIED LAND CORNER
 RESTORATION AND ESTABLISHMENT

BEING THE CORNERS FOR THE NW 1/4 OF THE NW 1/4, THE NE 1/4,
 THE SW 1/4, THE S 1/2 AND NE 1/4 OF THE SE 1/4.

SECTION 29, TOWNSHIP 39 NORTH, RANGE 14 EAST

COUNTY OF FOREST, STATE OF WISCONSIN



LEGEND

- 2 1/2 INCH DIAMETER ALUMINUM PIPE MONUMENT 36 INCHES LONG WITH AN ALUMINUM CAP.
- ◐ 2 1/2 INCH DIAMETER ALUMINUM PIPE MONUMENT 60 INCHES LONG WITH AN ALUMINUM CAP.
- △ 1 INCH DIAMETER ALUMINUM PIPE MONUMENT 36 INCHES LONG WITH AN ALUMINUM CAP.
- ▲ 1 INCH DIAMETER ALUMINUM PIPE MONUMENT 60 INCHES LONG WITH AN ALUMINUM CAP.
- ◑ 2 1/2 INCH DIAMETER GALVANIZED IRON PIPE MONUMENT 36 INCHES LONG WITH BRASS CAP.
- ◒ 2 1/2 INCH DIAMETER GALVANIZED IRON PIPE MONUMENT 60 INCHES LONG WITH BRASS CAP.
- BOUNDARY LINE MARKED TO FOREST SERVICE STANDARD.

Stock No. 26273

T39N R14E - SECTION 29

page 2 of 6

SURVEY NOTES

This plat of survey for Section 29, Township 39 North, Range 14 East is the product of a Photogrammetric Project linked with Global Satellite Positioning procedures to establish the co-ordinate values used as control to recover and restore lost Section and Quarter Section Corners and to establish positions for Sixteenth and Property Corners within the Sections in this project area.

The 10 G.P.S. Stations were assigned State Plane Co-ordinate Values. The values were then transferred to the target locations for ground control through photogrammetric bridging.

All bearings are geodetic bearings based on the Wisconsin North Zone Lambert Projection and have been transferred to the boundary lines within this project using a Wild North Seeking Gyro. All distances are geodetic grid distances.

This Survey was made by the U.S. Department of Agriculture, Forest Service, for the purpose of recovering, restoring, establishing, marking and perpetuating the corners and boundary lines of U.S. Government Land on the sections within this project area.

The Original Government Survey of this township was made in 1865 by William E. Daugherty.

The field notes of this survey and a copy of this and the remaining sections in this project area are on file in the Forest Supervisor's Office at Rhinelander, Wisconsin, and the District Ranger's Office at Florence, Wisconsin.

CORNERS RECOVERED AND RESTORED1. Northeast Section Corner

Corner position is restored using recovered evidence and records of survey from Melindy's Survey in 1917.

Corner References:

Aspen	13"	N72°E	36.17 feet
Aspen	12"	S29°E	38.41 feet
Spruce	16"	S60°W	71.82 feet
W. Birch	14"	N23°W	10.97 feet
Steel Sign Post		South	±1.50 feet

2. East Quarter Corner

Corner position is restored by accepting a 6"x6" scribed cedar post in a mound of rock as the best available evidence.

Corner References:

Maple	9"	S30°E	84.05 feet
Maple	7"	S24°W	65.53 feet
Steel Sign Post		NE	±4.00 feet

3. Southeast Section Corner

Corner position is restored by accepting a 6"x6" squared cedar post as the best available evidence.

Corner References:

Maple	7"	N46°E	80.45 feet
Maple	14"	S20°E	78.73 feet
Maple	11"	S50°W	119.10 feet
Maple	7"	N16°W	108.09 feet
Steel Sign Post		SE	±4.00 feet

Stock No. 26273

T39N R14E - SECTION 29

page 3 of 6

4. South Quarter Corner

In 1961, George Kapitz accepted a 4"x4"x28" cedar post in place as the best available evidence for restoring the corner position.

1961 Corner References recovered:

W. Birch	18"	N88°E	50.00 feet
W. Spruce(blowdown)		N50°W	24.30 feet
Hemlock(snag)		N63°W	39.10 feet

No new bearing trees available.

Set	Steel Sign Post	North	±1.00 feet
-----	-----------------	-------	------------

5. Southwest Section Corner

In 1967, Jean Resvick restored the corner position by accepting a squared wood post and original bearing tree evidence.

1967 Corner References recovered:

Cedar	11"	N69°E	75.68 feet
W. Pine	23"	S42°E	125.90 feet
Steel Sign Post		NW	±3.00 feet

6. West Quarter Corner

Corner position is restored from by accepting a 1 "x42" iron pipe and local bearing tree evidence.

Corner References recovered:

Elm(dead)	15"	N 1°E	34.32 feet
Elm(dead)	5"	S31°W	6.60 feet

Both of the above bearing trees were cut down for the Aerial Photo Project, and the following new bearing trees were made.

Maple	7"	S58°W	53.36 feet
Basswood	7"	N15°W	64.95 feet
Steel Sign Post		NW	±1.00 feet

7. Northwest Section Corner

In 1965, Jean Resvick restored the corner position from original bearing tree evidence.

1965 Corner References recovered:

Sugar	16"	N36°E	32.39 feet
Sugar	8"	S12°E	11.55 feet
Sugar	8"	S71°W	23.04 feet
Sugar(snag)		N20°W	31.00 feet
Steel Sign Post		South	2.00 feet

New Corner Reference:

Maple	13"	N 2°W	23.57 feet
-------	-----	-------	------------

8. North Quarter Corner

Corner position is restored by accepting a 4"x4" wood and local bearing tree evidence.

Corner References:

Cedar	10"	N85°W	14.87 feet
Cedar	12"	S16°W	32.98 feet
Steel Sign Post		NE	±1.00 feet

CORNERS ESTABLISHED1. North Sixteenth Corner between Sections 28 and 29

Corner position is established at mid-point and on line between the Northeast Section Corner and the East Quarter Corner.

Corner References:

B. Spruce	5"	S31°W	11.12 feet
Tamarack	5"	S83°W	31.30 feet
Steel Sign Post		N45°W	0.78 feet

Stock No. 26273

T39N R14E - SECTION 29

page 4 of 6

2. East Sixteenth Corner between Sections 29 and 32

Corner position is established at mid-point and on line between the Southeast Section Corner and the South Quarter Corner.

Corner References:

Spruce	8"	S67°E	24.45 feet
Spruce	8"	S 5°E	52.62 feet
Steel Sign Post		S45°W	0.70 feet

3. West Sixteenth Corner between Sections 29 and 32

Corner position is established at mid-point and on line between the Southwest Section Corner and the South Quarter Corner.

Corner References:

W. Spruce	9"	N23°W	38.04 feet
Balsam	8"	S89°E	21.09 feet
Steel Sign Post		N45°E	1.38 feet

4. North Sixteenth Corner between Sections 29 and 30

Corner position is established at mid-point and on line between the Northwest Section Corner and the West Quarter Corner.

Corner References:

Sugar	5"	N78°E	29.07 feet
Sugar	8"	N30°W	20.93 feet
Steel Sign Post		S32°W	1.03 feet

5. West Sixteenth Corner between Sections 20 and 29

Corner position is established at mid-point and on line between the Northwest Section Corner and the North Quarter Corner.

Corner References:

Cedar	14"	N 9°E	19.27 feet
Cedar	15"	S21°E	38.03 feet
Steel Sign Post		East	0.80 feet

6. East Sixteenth Corner between Sections 20 and 29

Corner position is restored from acceptance of a recovered wood post from Melindy's survey of 1917.

Corner References:

Spruce	12"	N67°E	31.75 feet
Spruce	9"	S50°W	18.35 feet
Steel Sign Post		N36°W	1.12 feet

7. Center-Quarter Corner

Corner position is established at the intersection of straight lines between opposing Quarter Corner positions on the perimeter of the section.

Corner References:

R. Maple	11"	S20°E	37.55 feet
Balsam	5"	S35°W	37.48 feet
Steel Sign Post		North	0.70 feet

8. Center-South Sixteenth Corner

Corner position is established at mid-point and on line between the South Quarter Corner and the Center-Quarter Corner.

Corner References:

Balsam	10"	N63°E	12.43 feet
Aspen	3"	S32°E	20.84 feet
Steel Sign Post		West	0.85 feet

9. Southeast Sixteenth Corner

Corner position is established at the intersection of straight lines between opposing Sixteenth Corner positions on the perimeter of the Southeast Quarter of the Section.

Corner References:

Steel Sign Post		North	1.10 feet
Steel Sign Post		East	1.10 feet
Steel Sign Post		S40°E	1.08 feet

Stock No. 26273

T39N R14E - SECTION 29

page 5 of 6

10. Center-East Sixteenth Corner

Corner position is established at mid-point and on line between the East Quarter Corner and the Center-Quarter Corner.

Corner References:

Balsam	10"	N59°E	28.60 feet
R. Maple	4"	S11°E	35.58 feet
Steel Sign Post		S50°E	0.67 feet

11. Northwest Sixteenth Corner

Corner position is established at the intersection of straight lines between opposing Sixteenth Corner positions on the perimeter of the Northwest Quarter of the Section.

Corner References:

R. Maple	8"	N66°E	25.45 feet
Basswood	9"	S23°W	22.50 feet
Wood Post	3"x3"	N 7°E	25.00 feet
Steel Sign Post		S45°E	0.81 feet

12. Northeast Sixteenth Corner

Corner position is established at the intersection of straight lines between opposing Sixteenth Corner positions on the perimeter of the Northeast Quarter of the Section.

Corner References:

None Available

13. Property Corner #1

Corner position is established at 321.34 feet from the East Sixteenth Corner. This distance was arrived at by dividing the NE,NE into four 10 acre parcels.

Corner References:

Aspen	14"	S28°E	30.05 feet
Maple	7"	S21°W	37.38 feet
Steel Sign Post		SW	±1.00 feet

14. Property Corner #2

Corner position is established at 313.13 feet from the Northeast Sixteenth Corner. This distance was arrived at by dividing the NE,NE into four 10 acre parcels.

Corner References:

Tamarack	3"	N 7°E	7.14 feet
Tamarack	4"	S55°E	1.38 feet
Steel Sign Post		S45°W	

Stock No. 26273

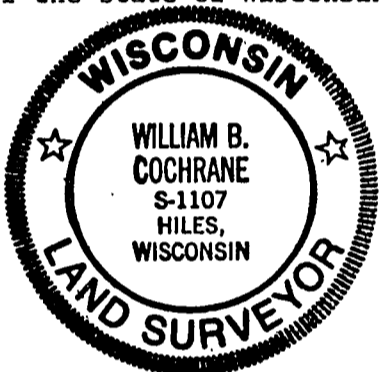
T39N R14E - SECTION 29

page 6 of 6

SURVEYOR'S AFFIDAVITState of Wisconsin)
County of Forest) ss

I, William B. Cochrane, Land Surveyor, U.S.D.A. Forest Service, and a Registered Land Surveyor in the State of Wisconsin, hereby certify that I have surveyed and sub-divided Section 29, Township 39 North, Range 14 East, Fourth Principal Meridian, State of Wisconsin.

The plat map and survey notes herewith are a correct representation of the land surveyed and sub-divided. I have surveyed and sub-divided said section in accordance with the rules for the Survey of Public Lands and the Statutes of the State of Wisconsin.



William B. Cochrane
Land Surveyor, U.S.D.A. Forest Service
R.L.S. State of Wisconsin
Certificate #S-1107

SURVEYOR'S AFFIDAVITState of Wisconsin)
County of Forest) ss

I, Gary L. Pisoni, Contract Land Surveyor for the U.S.D.A. Forest Service, and a Registered Land Surveyor in the State of Wisconsin, hereby certify that I have surveyed the boundary lines and monumented the Sixteenth Corners of Section 29, Township 39 North, Range 14 East, Fourth Principal Meridian, State of Wisconsin.

I have surveyed and monumented said Section in accordance with the rules for the Survey of Public Lands, the Statutes of the State of Wisconsin and the subdivision field notes computed by William B. Cochrane, Land Surveyor, U.S.D.A. Forest Service.

Gary L. Pisoni
Land Surveyor
R.L.S. State of Wisconsin
Certificate #S-1634

Survey requested by; *[Signature]*

3-22-89

District Ranger

Date

Date of Survey: 1988

