

Stock No. 26273

FOREST CO SURVEYOR

FILE # 391432-19890504

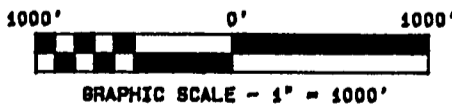
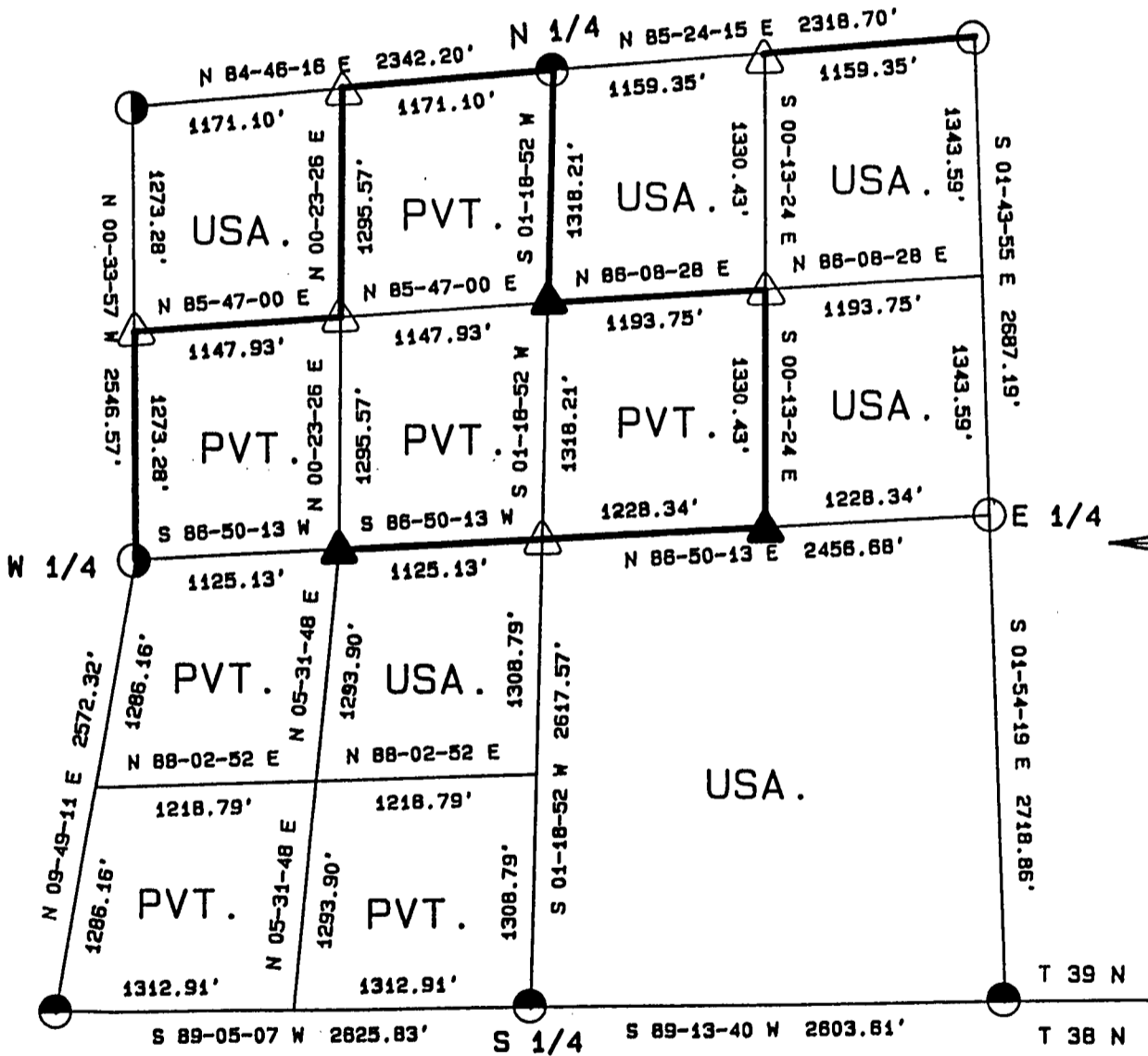
DATE _____ BY _____

PLAT OF SURVEY FOR CERTIFIED LAND CORNER
RESTORATION AND ESTABLISHMENT

BEING THE CORNERS FOR THE NW 1/4 OF THE NW 1/4, THE N 1/2 AND SE 1/4
OF THE NE 1/4, THE NE 1/4 OF THE SW 1/4 AND THE SE 1/4.

SECTION 32, TOWNSHIP 39 NORTH, RANGE 14 EAST

COUNTY OF FOREST, STATE OF WISCONSIN



LEGEND

- 2 1/2 INCH DIAMETER ALUMINUM PIPE MONUMENT 36 INCHES LONG WITH AN ALUMINUM CAP.
- ◐ 2 1/2 INCH DIAMETER ALUMINUM PIPE MONUMENT 60 INCHES LONG WITH AN ALUMINUM CAP.
- △ 1 INCH DIAMETER ALUMINUM PIPE MONUMENT 36 INCHES LONG WITH AN ALUMINUM CAP.
- ▲ 1 INCH DIAMETER ALUMINUM PIPE MONUMENT 60 INCHES LONG WITH AN ALUMINUM CAP.
- ⊕ 2 1/2 INCH DIAMETER GALVANIZED IRON PIPE MONUMENT 36 INCHES LONG WITH BRASS CAP.
- ◑ 2 1/2 INCH DIAMETER GALVANIZED PIPE MONUMENT 60 INCHES LONG WITH BRASS CAP.
- BOUNDARY LINE MARKED TO FOREST SERVICE STANDARD.

Stock No. 26273

T39N R14E - SECTION 32

page 2 of 6

SURVEY NOTES

This plat of survey for Section 32, Township 39 North, Range 14 East is the product of a Photogrammetric Project linked with Global Satellite Positioning procedures to establish the co-ordinate values used as control to recover and restore lost Section and Quarter Section Corners and to establish positions for Sixteenth and Property Corners within the Sections in this project area.

The 10 G.P.S. Stations were assigned State Plane Co-ordinate Values. The values were then transferred to the target locations for ground control through photogrammetric bridging.

All bearings are geodetic bearings based on the Wisconsin North Zone Lambert Projection and have been transferred to the boundary lines within this project using a Wild North Seeking Gyro. All distances are geodetic grid distances.

This Survey was made by the U.S. Department of Agriculture, Forest Service, for the purpose of recovering, restoring, establishing, marking and perpetuating the corners and boundary lines of U.S. Government Land on the sections within this project area.

The Original Government Survey of this township was made in 1865 by William E. Daugherty.

The field notes of this survey and a copy of this and the remaining sections in this project area are on file in the Forest Supervisor's Office at Rhinelander, Wisconsin, and the District Ranger's Office at Florence, Wisconsin.

CORNERS RECOVERED AND RESTORED1. Northeast Section Corner

Corner position is restored by accepting a 6"x6" squared cedar post as the best available evidence.

Corner References:

Maple	7"	N46°E	80.45 feet
Maple	14"	S20°E	78.73 feet
Maple	11"	S50°W	119.20 feet
Maple	7"	N16°W	108.09 feet
Steel Sign Post		SW	±4.00 feet

2. East Quarter Corner

Corner position is restored by accepting a 4"x4" squared wood post as the best available evidence.

Corner References:

Spruce	17"	S84°E	40.91 feet
Maple	5"	S18°E	41.94 feet
Steel Sign Post		NW	±1.50 feet

3. Southeast Section Corner

In 1968, Jean Resvick restored the corner position from recovered original bearing tree evidence and a cedar post point.

1968 Corner References recovered:

Cedar	12"	N37°E	9.00 feet
Maple	5"	S46°E	4.33 feet
Cedar	7"	S13°W	17.86 feet
Cedar	13"	N52°W	17.94 feet
4"x4" Cedar Sign Post		N45°W	+1.30 feet

The NE and NW bearing trees were cut down for the Air Photo project and the following new bearing trees were made:

Maple	6"	N32°E	57.20 feet
Maple	7"	N51°W	84.37 feet

Stock No. 26273

T39N R14E - SECTION 32

page 3 of 6

4. South Quarter Corner

In 1969, Jean Resvick restored the corner position by accepting a 2"x2" squared wood post, original bearing tree evidence and natural feature calls.

1969 Corner References recovered:

Cedar	12"	N62°E	6.39 feet
Cedar	12"	N63°W	5.93 feet
Steel Sign Post		SE	1.50 feet

The above bearing trees were cut down for the Aerial Photo Project and the following new bearing trees were made:

Cedar	13"	S88°E	39.74 feet
Cedar	14"	S40°W	20.70 feet
Re-set Steel Sign Post		SE	±3.50 feet

5. Southwest Section Corner

In 1975, William Cochrane restored the corner position by accepting a 6"x6" scribed cedar post and natural feature calls.

1975 Corner References recovered:

B. Spruce(Snag)		N59°E	14.41 feet
B. Spruce	4"	S21°E	8.67 feet
B. Spruce	4"	N82°W	12.80 feet
B. Spruce	4"	N44°W	8.26 feet
Steel Sign Post		SW	0.20 feet

All of the above bearing trees were cut down for Aerial Photo Project, and the following new bearing trees were made:

B. Spruce	5"	N47°E	36.60 feet
B. Spruce	5"	S34°E	50.60 feet
B. Spruce	4"	S64°W	19.87 feet
B. Spruce	5"	N13°W	43.56 feet
Re-set Steel Sign Post		SE	±3.00 feet

6. West Quarter Corner

Corner position is restored by accepting 1" diameter iron pipe as the best available evidence.

Corner References:

Cedar	13"	S72°E	39.80 feet
Tamarack	9"	S 8°W	63.08 feet
Steel Sign Post		NE	±4.00 feet

7. Northwest Section Corner

In 1967, Jean Resvick restored the corner position by accepting a squared wood post and from original bearing tree evidence.

1967 Corner References recovered:

Cedar	11"	N69°E	75.68 feet
W. Pine	23"	S42°E	125.90 feet
Steel Sign Post		NW	±3.00 feet

8. North Quarter Corner

In 1961, George Kapitz accepted a 4"x4"x28" cedar post in place as the best available evidence for restoring the corner position.

1961 Corner References recovered:

W. Birch	18"	N88°E	50.00 feet
W. Spruce(Blow-down)		N50°W	24.30 feet
Hemlock(Snag)		N63°W	39.10 feet

No new bearing trees available.

Set Steel Sign Post		North	±1.00 feet
---------------------	--	-------	------------

Stock No. 26273

T39N R14E - SECTION 32

page 4 of 6

CORNERS ESTABLISHED1. East Sixteenth Corner between Sections 29 and 32

Corner position is established at mid-point and on line between the Northeast Section Corner and the North Quarter Corner.

Corner References:

Spruce	8"	S67°E	24.45 feet
Spruce	8"	S 5°E	52.62 feet
Steel Sign Post		S45°W	0.70 feet

2. West Sixteenth Corner between Sections 29 and 32

Corner position is established at mid-point and on line between the Northwest Section Corner and the North Quarter Corner.

Corner References:

W. Spruce	9"	N23°W	38.04 feet
Balsam	8"	S89°E	21.09 feet
Steel Sign Post		N45°E	1.38 feet

3. North Sixteenth Corner between Sections 31 and 32

Corner position is established at mid-point and on line between the Northwest Section Corner and the West Quarter Corner.

Corner References:

R. Maple	7"	N89°W	16.40 feet
R. Maple	4"	N20°W	26.47 feet
Steel Sign Post		N24°E	1.18 feet

4. Center-Quarter Corner

Corner position is established at the intersection of straight lines between opposing Quarter Corner positions on the perimeter of the section.

Corner References:

R. Maple	3"	S89°E	22.33 feet
B. Cherry	11"	N70°W	52.54 feet
Steel Sign Post		North	0.90 feet

5. Center-East Sixteenth Corner

Corner position is established at mid-point and on line between the East Quarter Corner and the Center-Quarter Corner.

Corner References:

Cedar	7"	North	41.15 feet
Tamarack	8"	N74°W	18.59 feet
Steel Sign Post		S45°W	0.75 feet

6. Center-West Sixteenth Corner

Corner position is established at mid-point and on line between the West Quarter and the Center-Quarter Corner.

Corner References:

B. Ash	7"	N22°E	17.63 feet
Cedar	12"	S70°W	22.70 feet
Steel Sign Post		S45°E	1.37 feet

7. Center-North Sixteenth Corner

Corner position is established at mid-point and on line between the North Quarter Corner and the Center-Quarter Corner.

Corner References:

Cedar	10"	N35°E	22.03 feet
Tamarack	12"	S43°E	13.96 feet
Steel Sign Post		N77°W	1.23 feet

Stock No. 26273

T39N R14E - SECTION 32

page 5 of 6

8. Northeast Sixteenth Corner

Corner position is established at the intersection of straight lines between opposing Sixteenth Corner positions on the perimeter of the Northeast Quarter of the Section.

Corner References:

Balsam	8"	S86°E	26.51 feet
Balsam	8"	S24°W	22.56 feet
Steel Sign Post		N45°W	0.85 feet

9. Northwest Sixteenth Corner

Corner position is established at the intersection of straight lines between opposing Sixteenth Corner positions on the perimeter of the Northwest Quarter of the Section.

Corner References:

Balsam	5"	N31°E	16.84 feet
Cedar	7"	N71°W	82.91 feet
Steel Sign Post		S 2°E	0.92 feet

Stock No. 26273

T39N R14E - SECTION 32

page 6 of 6

SURVEYOR'S AFFIDAVIT

State of Wisconsin)
County of Forest) ss

I, William B. Cochrane, Land Surveyor, U.S.D.A. Forest Service, and a Registered Land Surveyor in the State of Wisconsin, hereby certify that I have surveyed and sub-divided Section 32, Township 39 North, Range 14 East, Fourth Principal Meridian, State of Wisconsin.

The plat map and survey notes herewith are a correct representation of the land surveyed and sub-divided. I have surveyed and sub-divided said section in accordance with the rules for the Survey of Public Lands and the Statutes of the State of Wisconsin.



William B. Cochrane
Land Surveyor, U.S.D.A. Forest Service
R.L.S. State of Wisconsin
Certificate #S-1107

SURVEYOR'S AFFIDAVIT

State of Wisconsin)
County of Forest) ss

I, Gary L. Pisoni, Contract Land Surveyor for the U.S.D.A. Forest Service, and a Registered Land Surveyor in the State of Wisconsin, hereby certify that I have surveyed the boundary lines and monumented the Sixteenth Corners of Section 32, Township 39 North, Range 14 East, Fourth Principal Meridian, State of Wisconsin.

I have surveyed and monumented said Section in accordance with the rules for the Survey of Public Lands, the Statutes of the State of Wisconsin and the subdivision field notes computed by William B. Cochrane, Land Surveyor, U.S.D.A. Forest Service.

Gary L. Pisoni
Land Surveyor
R.L.S. State of Wisconsin
Certificate #S-1634

Survey requested by; [Signature] 3-22-89
District Ranger Date

Date of Survey: 1988

