

Stock No. 26273

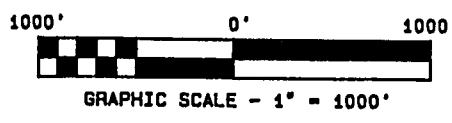
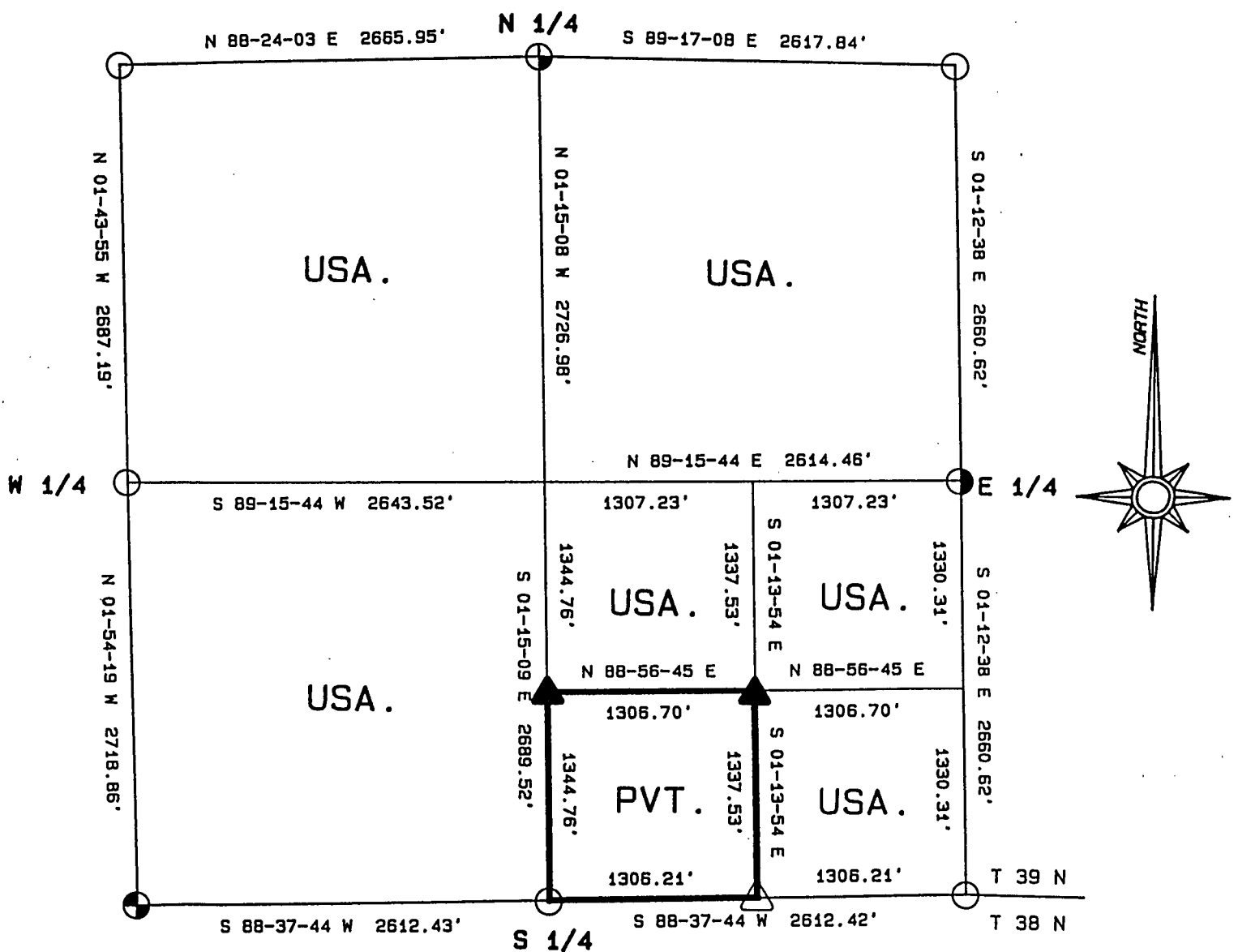
FOREST CO SURVEYOR
FILE # 391433-19890504
DATE _____ BY _____

PLAT OF SURVEY FOR CERTIFIED LAND CORNER RESTORATION AND ESTABLISHMENT

BEING THE CORNERS FOR THE NORTH 1/2 OF THE SECTION, THE SW 1/4,
THE N 1/2 AND SE 1/4 OF THE SE 1/4

SECTION 33, TOWNSHIP 39 NORTH, RANGE 14 EAST

COUNTY OF FOREST, STATE OF WISCONSIN



LEGEND

- 2 1/2 INCH DIAMETER ALUMINUM PIPE MONUMENT 36 INCHES LONG WITH AN ALUMINUM CAP.
- ◐ 2 1/2 INCH DIAMETER ALUMINUM PIPE MONUMENT 60 INCHES LONG WITH AN ALUMINUM CAP.
- △ 1 INCH DIAMETER ALUMINUM PIPE MONUMENT 36 INCHES LONG WITH AN ALUMINUM CAP.
- ▲ 1 INCH DIAMETER ALUMINUM PIPE MONUMENT 60 INCHES LONG WITH AN ALUMINUM CAP.
- ⊕ 2 1/2 INCH DIAMETER GALVANIZED IRON PIPE MONUMENT 36 INCHES LONG WITH BRASS CAP.
- BOUNDARY LINE MARKED TO FOREST SERVICE STANDARD.

Stock No. 26273

T39N R14E - SECTION 33

page 2 of 5

SURVEY NOTES

This plat of survey for Section 33, Township 39 North, Range 14 East is the product of a Photogrammetric Project linked with Global Satellite Positioning procedures to establish the co-ordinate values used as control to recover and restore lost Section and Quarter Section Corners and to establish positions for Sixteenth and Property Corners within the Sections in this project area.

The 10 G.P.S. Stations were assigned State Plane Co-ordinate Values. The values were then transferred to the target locations for ground control through photogrammetric bridging.

All bearings are geodetic bearings based on the Wisconsin North Zone Lambert Projection and have been transferred to the boundary lines within this project using a Wild North Seeking Gyro. All distances are geodetic grid distances.

This Survey was made by the U.S. Department of Agriculture, Forest Service, for the purpose of recovering, restoring, establishing, marking and perpetuating the corners and boundary lines of U.S. Government Land on the sections within this project area.

The Original Government Survey of this township was made in 1865 by William E. Daugherty.

The field notes of this survey and a copy of this and the remaining sections in this project area are on file in the Forest Supervisor's Office at Rhinelander, Wisconsin, and the District Ranger's Office at Florence, Wisconsin.

CORNERS RECOVERED AND RESTORED1. Northeast Section Corner

Corner position is restored using double proportionate methods.

Corner References:

Maple	9"	N28°E	9.68 feet
Maple	8"	S40°E	33.38 feet
Maple	11"	S24°W	18.48 feet
Basswood	11"	N49°W	17.75 feet
Steel Sign Post		North	0.30 feet

2. East Quarter Corner

Corner position is restored at proportionate distance and on line between the Northeast and Southeast Section Corners of Section 33.

Corner References:

Cedar	8"	N75°E	46.48 feet
Cedar	11"	S45°E	31.80 feet
Steel Sign Post		NW	0.75 feet

3. Southeast Section Corner

Corner position is restored by accepting a 3"x3"x14" scribed wood post as the best available evidence.

Corner References:

Maple	10"	N26°E	25.20 feet
Maple	7"	S34°E	43.40 feet
Maple	14"	S46°W	32.06 feet
Maple	13"	N62°W	13.79 feet
Steel Sign Post		NW	1.50 feet

Stock No. 26273

T39N R14E - SECTION 33

page 3 of 5

4. South Quarter Corner

Corner position is restored at proportionate distance and on line between the Southeast and Southwest Section Corners of Section 33.

Corner References:

Spruce	12"	N10°E	30.96 feet
W. Birch	13"	S65°E	24.74 feet
Steel Sign Post		North	1.00 feet

5. Southwest Section Corner

In 1968, Jean Resvick restored the corner position from recovered original bearing tree evidence and a cedar post point.

1968 Corner References recovered:

Cedar	12"	N37°E	9.00 feet
Maple	5"	S46°E	4.33 feet
Cedar	7"	S13°W	17.86 feet
Cedar	13"	N52°W	17.94 feet
4"x4" Cedar Sign Post		N45°W	1.30 feet

The NE and NW bearing trees were cut down for the Air Photo Project.

New Corner References:

Maple	6"	N32°E	57.20 feet
Maple	7"	N51°W	84.37 feet

6. West Quarter Corner

Corner position is restored by accepting of a 4"x4" squared wood post as the best available evidence.

Corner References:

Spruce	17"	S84°E	40.91 feet
Maple	5"	S18°E	41.94 feet
Steel Sign Post		NW	1.50 feet

7. Northwest Section Corner

Corner position is restored by accepting of a 6"x6" squared cedar post as the best available evidence.

Corner References:

Maple	7"	N46°E	80.45 feet
Maple	14"	S20°E	78.73 feet
Maple	11"	S50°W	119.10 feet
Maple	7"	N16°W	108.09 feet
Steel Sign Post		SW	4.00 feet

8. North Quarter Corner

In 1974, William B. Cochrane restored the corner position by accepting a 6"x6" scribed wood post in a mound of stone, as the best available evidence.

1974 Corner References recovered:

Hemlock	25"	S41°E	50.40 feet
R. Pine	30"	N27°W	28.96 feet
Steel Sign Post		SE	2.00 feet

CORNERS ESTABLISHED1. East Sixteenth Corner between Sections 33 and 4, T38-39N

Corner position is established at mid-point and on line between the Southeast Section Corner and the South Quarter Corner.

Corner References:

Basswood	10"	N33°E	13.12 feet
R. Maple	9"	S86°W	20.05 feet
Steel Sign Post		SE	1.11 feet

Stock No. 26273

T39N R14E - SECTION 33

page 4 of 5

2. Center-South-Sixteenth Corner

Corner position is established at mid-point and on line between the South Quarter Corner and the Center Quarter Corner.

Corner References:

Cedar	8"	N51°E	11.98 feet
Cedar	8"	S50°E	13.66 feet
Steel Sign Post		South	1.00 feet

3. Southeast Sixteenth Corner

Corner position is established at the intersection of straight lines between opposing sixteenth corners on the perimeter of the Southeast quarter of the Section.

Corner References:

Cedar	15"	N37°E	20.30 feet
Cedar	12"	N70°W	36.51 feet
Steel Sign Post		South	0.95 feet

Stock No. 26273

T39N R14E - SECTION 33

page 5 of 5

SURVEYOR'S AFFIDAVIT

State of Wisconsin)
County of Forest) ss

I, William B. Cochrane, Land Surveyor, U.S.D.A. Forest Service, and a Registered Land Surveyor in the State of Wisconsin, hereby certify that I have surveyed and sub-divided Section 33, Township 39 North, Range 14 East, Fourth Principal Meridian, State of Wisconsin.

The plat map and survey notes herewith are a correct representation of the land surveyed and sub-divided. I have surveyed and sub-divided said section in accordance with the rules for the Survey of Public Lands and the Statutes of the State of Wisconsin.



William B. Cochrane
Land Surveyor, U.S.D.A. Forest Service
R.L.S. State of Wisconsin
Certificate #S-1107

SURVEYOR'S AFFIDAVIT

State of Wisconsin)
County of Forest) ss

I, Gary L. Pisoni, Contract Land Surveyor for the U.S.D.A. Forest Service, and a Registered Land Surveyor in the State of Wisconsin, hereby certify that I have surveyed the boundary lines and monumented the Sixteenth Corners of Section 33, Township 39 North, Range 14 East, Fourth Principal Meridian, State of Wisconsin.

I have surveyed and monumented said Section in accordance with the rules for the Survey of Public Lands, the Statutes of the State of Wisconsin and the subdivision field notes computed by William B. Cochrane, Land Surveyor, U.S.D.A. Forest Service.

Gary L. Pisoni
Land Surveyor
R.L.S. State of Wisconsin
Certificate #S-1634

Survey requested by; *Edward Langer* 3-22-89
District Ranger Date

Date of Survey: 1988

