

Stock No. 26273

FOREST CO SURVEYOR

FILE # 3914.34-19890504

DATE \_\_\_\_\_ BY \_\_\_\_\_

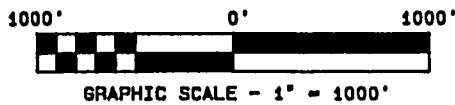
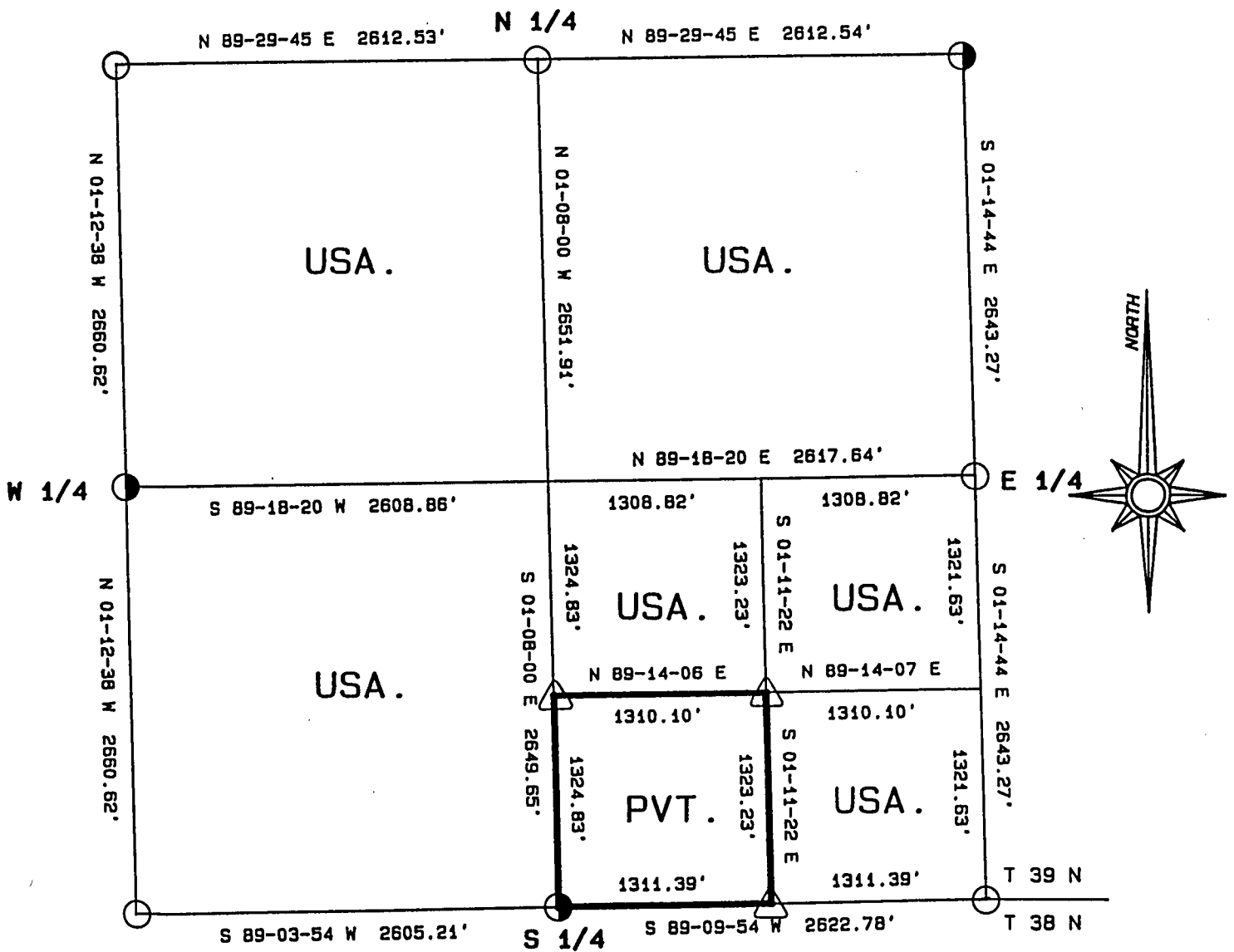
PLAT OF SURVEY FOR CERTIFIED LAND CORNER

RESTORATION AND ESTABLISHMENT

BEING THE CORNERS FOR THE NORTH 1/2 OF THE SECTION, THE SW 1/4, THE N 1/2 AND SE 1/4 OF THE SE 1/4

SECTION 34, TOWNSHIP 39 NORTH, RANGE 14 EAST

COUNTY OF FOREST, STATE OF WISCONSIN



LEGEND

- 2 1/2 INCH DIAMETER ALUMINUM PIPE MONUMENT 36 INCHES LONG WITH AN ALUMINUM CAP.
- 2 1/2 INCH DIAMETER ALUMINUM PIPE MONUMENT 60 INCHES LONG WITH AN ALUMINUM CAP.
- △ 1 INCH DIAMETER ALUMINUM PIPE MONUMENT 36 INCHES LONG WITH AN ALUMINUM CAP.
- BOUNDARY LINE MARKED TO FOREST SERVICE STANDARD.

Stock No. 26273

T39N R14E - SECTION 34

page 2 of 4

SURVEY NOTES

This plat of survey for Section 34, Township 39 North, Range 14 East is the product of a Photogrammetric Project linked with Global Satellite Positioning procedures to establish the co-ordinate values used as control to recover and restore lost Section and Quarter Section Corners and to establish positions for Sixteenth and Property Corners within the Sections in this project area.

The 10 G.P.S. Stations were assigned State Plane Co-ordinate Values. The values were then transferred to the target locations for ground control through photogrammetric bridging.

All bearings are geodetic bearings based on the Wisconsin North Zone Lambert Projection and have been transferred to the boundary lines within this project using a Wild North Seeking Gyro. All distances are geodetic grid distances.

This Survey was made by the U.S. Department of Agriculture, Forest Service, for the purpose of recovering, restoring, establishing, marking and perpetuating the corners and boundary lines of U.S. Government Land on the sections within this project area.

The Original Government Survey of this township was made in 1865 by William E. Daugherty.

The field notes of this survey and a copy of this and the remaining sections in this project area are on file in the Forest Supervisor's Office at Rhinelander, Wisconsin, and the District Ranger's Office at Florence, Wisconsin.

CORNERS RECOVERED AND RESTORED1. Northeast Section Corner

Corner position restored by accepting a cedar post point and a fence line running East as the best available evidence.

Corner References:

Spruce	4"	N18°E	31.52 feet
Spruce	6"	S45°E	41.27 feet
Spruce	4"	S30°W	27.40 feet
Spruce	5"	N39°W	37.93 feet
Steel Sign Post		NE	3.00 feet

2. East Quarter Corner

Corner position is restored at proportionate distance and on line between the Northeast and Southeast Section Corners of Section 34.

Corner References:

Maple	7"	N82°E	9.37 feet
Maple	7"	N07°W	34.46 feet
Steel Sign Post		NW	1.00 feet

3. Southeast Section Corner

Corner position is restored at proportionate distance and on line between the South Quarter Corner of Section 34 and the South Quarter Corner of Section 35.

Corner References:

Maple	9"	N51°E	16.57 feet
Maple	5"	S03°E	32.56 feet
Maple	14"	S84°W	46.98 feet
Maple	16"	N17°W	40.24 feet
Steel Sign Post		South	10.50 feet

Monument is 0.50 feet below the surface of the road.

Stock No. 26273

T39N R14E - SECTION 34

page 3 of 4

4. South Quarter Corner

Corner position is restored by accepting a recovered 3"x3"x3' scribed cedar post as described on Form 874 dated 1-28-1937.

## Corner References:

Cedar	12"	S51°E	11.32 feet
Cedar	13"	S64°W	22.80 feet
Steel Sign Post		NE	3.00 feet

5. Southwest Section Corner

Corner position is restored by accepting a 3"x3"x14" scribed wood post as the best available evidence.

## Corner References:

Maple	10"	N26°E	25.20 feet
Maple	7"	S34°E	43.40 feet
Maple	14"	S46°W	32.06 feet
Maple	13"	N62°W	13.79 feet
Steel Sign Post		NW	1.50 feet

6. West Quarter Corner

Corner position is restored at proportionate distance and on line between the Northwest and Southwest Section Corners of Section 34.

## Corner References:

Cedar	8"	N75°E	46.48 feet
Cedar	11"	S45°E	31.80 feet
Steel Sign Post		NW	0.75 feet

7. Northwest Section Corner

Corner position is restored using double proportionate methods.

## Corner References:

Maple	9"	N28°E	9.68 feet
Maple	8"	S40°E	33.38 feet
Maple	11"	S24°W	18.48 feet
Basswood	11"	N49°W	17.75 feet
Steel Sign Post		North	0.30 feet

8. North Quarter Corner

Corner position is restored at proportionate distance and on line between the Northwest and Northeast Section Corners of Section 34.

## Corner References:

Maple	10"	N37°E	33.95 feet
Maple	12"	S63°E	19.17 feet
Steel Sign Post		NE	1.00 feet

CORNERS ESTABLISHED1. East Sixteenth Corner between Sections 34 and 3, T38-39N

Corner position is established at mid-point and on line between the South Quarter Corner and the Southeast Section Corner.

## Corner References:

Basswood	8"	N80°E	31.94 feet
S. Maple	11"	S19°W	27.39 feet
Wood Post	4"x4"x36"	S86°W	6.80 feet
Steel Sign Post		SE	1.42 feet

2. Southeast Sixteenth Corner

Corner position is established at the intersection of straight lines between opposing sixteenth corner positions on the perimeter of the Southeast quarter of the Section.

## Corner References:

R. Maple	4"	S51°E	39.82 feet
R. Maple	3"	N19°W	33.01 feet
Steel Sign Post		NE	1.02 feet

Stock No. 26273

T39N R14E - SECTION 34

page 4 of 4

**3. Center-South Sixteenth Corner**

Corner position is established at mid-point and on line between the Center Quarter Corner and the South Quarter Corner.

Corner References:

S. Maple	7"	N49°E	15.37 feet
S. Maple	6"	N44°W	11.83 feet
Steel Sign Post		West	0.97 feet

SURVEYOR'S AFFIDAVIT

State of Wisconsin)  
County of Forest ) ss

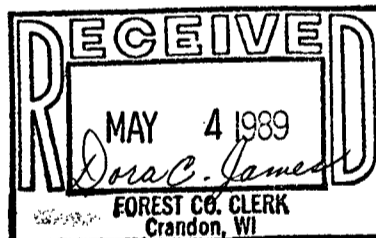
I, William B. Cochrane, Land Surveyor, U.S.D.A. Forest Service, and a Registered Land Surveyor in the State of Wisconsin, hereby certify that I have surveyed and sub-divided Section 34, Township 39 North, Range 14 East, Fourth Principal Meridian, State of Wisconsin.

The plat map and survey notes herewith are a correct representation of the land surveyed and sub-divided. I have surveyed and sub-divided said section in accordance with the rules for the Survey of Public Lands and the Statutes of the State of Wisconsin.



*William B. Cochrane*  
Land Surveyor, U.S.D.A. Forest Service  
R.L.S. State of Wisconsin  
Certificate #S-1107

SURVEYOR'S AFFIDAVIT



State of Wisconsin)  
County of Forest ) ss

I, Gary L. Pisoni, Contract Land Surveyor for the U.S.D.A. Forest Service, and a Registered Land Surveyor in the State of Wisconsin, hereby certify that I have surveyed the boundary lines and monumented the Sixteenth Corners of Section 34, Township 39 North, Range 14 East, Fourth Principal Meridian, State of Wisconsin.

I have surveyed and monumented said Section in accordance with the rules for the Survey of Public Lands, the Statutes of the State of Wisconsin and the subdivision field notes computed by William B. Cochrane, Land Surveyor, U.S.D.A. Forest Service.



*Gary L. Pisoni*  
Land Surveyor  
R.L.S. State of Wisconsin  
Certificate #S-1634

Survey requested by;

*Edward [Signature]*

*3-22-89*

District Ranger

Date

Date of Survey: 1988