

Stock No. 26273

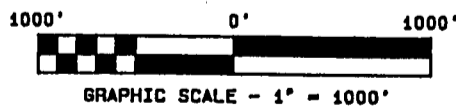
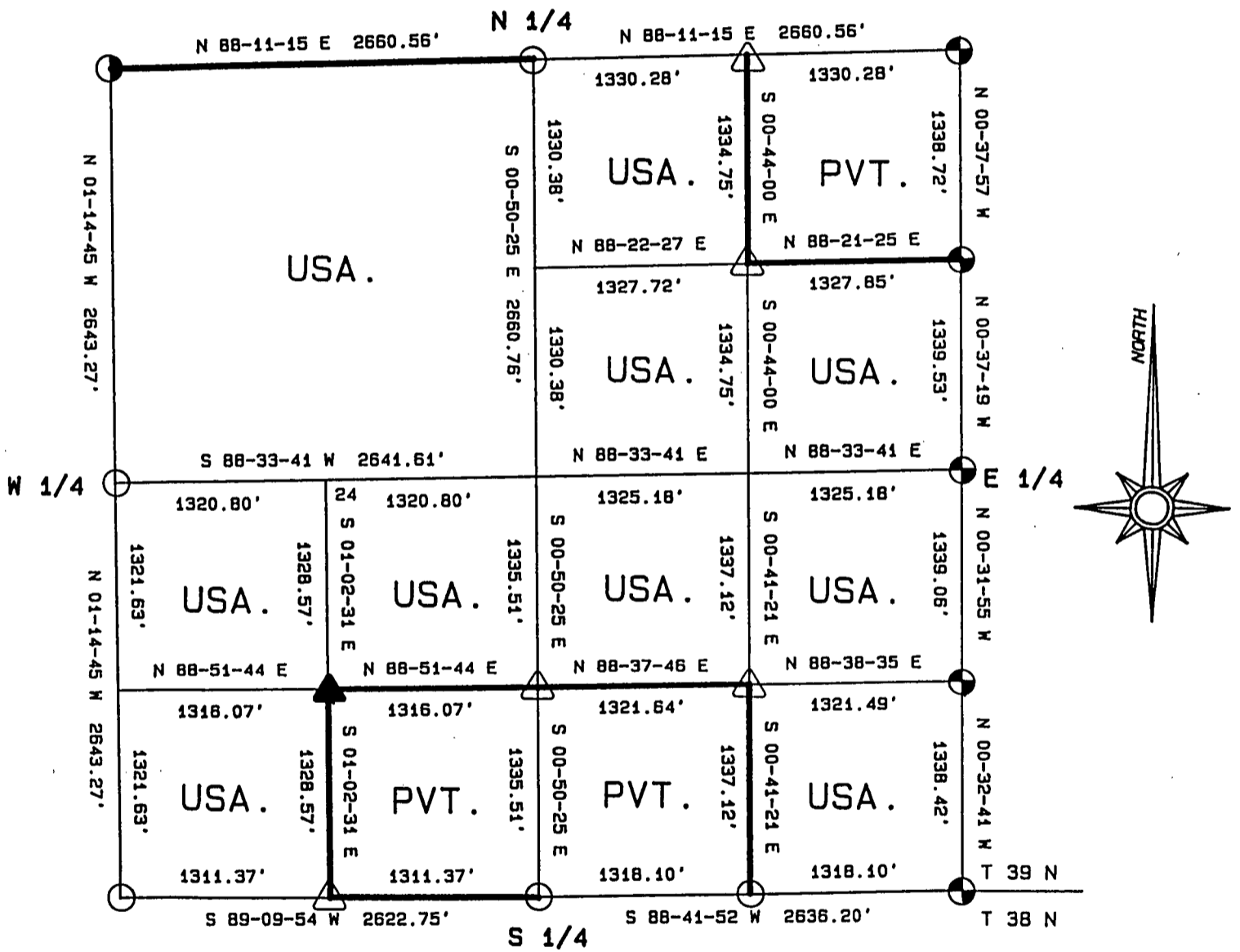
FOREST CO SURVEYOR  
FILE # 391435-19890504  
DATE \_\_\_\_\_ BY \_\_\_\_\_

# PLAT OF SURVEY FOR CERTIFIED LAND CORNER RESTORATION AND ESTABLISHMENT

BEING THE CORNERS FOR THE NW 1/4, THE W 1/2 AND SE 1/4 OF THE NE 1/4,  
THE N 1/2 AND SW 1/4 OF THE SW 1/4, THE N 1/2 AND SE 1/4 OF THE SE 1/4

## SECTION 35, TOWNSHIP 39 NORTH, RANGE 14 EAST

COUNTY OF FOREST, STATE OF WISCONSIN



### LEGEND

- 2 1/2 INCH DIAMETER ALUMINUM PIPE MONUMENT 36 INCHES LONG WITH AN ALUMINUM CAP.
- ◐ 2 1/2 INCH DIAMETER ALUMINUM PIPE MONUMENT 60 INCHES LONG WITH AN ALUMINUM CAP.
- △ 1 INCH DIAMETER ALUMINUM PIPE MONUMENT 36 INCHES LONG WITH AN ALUMINUM CAP.
- ▲ 1 INCH DIAMETER ALUMINUM PIPE MONUMENT 60 INCHES LONG WITH AN ALUMINUM CAP.
- ⊕ 2 1/2 INCH DIAMETER GALVANIZED IRON PIPE MONUMENT 36 INCHES LONG WITH BRASS CAP.
- BOUNDARY LINE MARKED TO FOREST SERVICE STANDARD.

Stock No. 26273

T39N R14E - SECTION 35

page 2 of 5

SURVEY NOTES

This plat of survey for Section 35, Township 39 North, Range 14 East is the product of a Photogrammetric Project linked with Global Satellite Positioning procedures to establish the co-ordinate values used as control to recover and restore lost Section and Quarter Section Corners and to establish positions for Sixteenth and Property Corners within the Sections in this project area.

The 10 G.P.S. Stations were assigned State Plane Co-ordinate Values. The values were then transferred to the target locations for ground control through photogrammetric bridging.

All bearings are geodetic bearings based on the Wisconsin North Zone Lambert Projection and have been transferred to the boundary lines within this project using a Wild North Seeking Gyro. All distances are geodetic grid distances.

This Survey was made by the U.S. Department of Agriculture, Forest Service, for the purpose of recovering, restoring, establishing, marking and perpetuating the corners and boundary lines of U.S. Government Land on the sections within this project area.

The Original Government Survey of this township was made in 1865 by William E. Daugherty.

The field notes of this survey and a copy of this and the remaining sections in this project area are on file in the Forest Supervisor's Office at Rhineland, Wisconsin, and the District Ranger's Office at Florence, Wisconsin.

CORNERS RECOVERED AND RESTORED1. Northeast Section Corner

In 1975, Jean Resvick accepted the center-line of the road and a fence line East, as the best available evidence for restoring the corner position.

1975 Corner References recovered:

Elm(Dead)	10"	N22°E	57.20 feet
Aspen	12"	S49°E	62.54 feet
Elm(Down)	12"	S82°W	35.69 feet
Cherry	11"	N49°W	47.95 feet

Monument is 0.70 feet below the surface of the road.

New Corner Reference:

Maple	5"	S70°W	51.45 feet
-------	----	-------	------------

2. East Quarter Corner

In 1975, Jean Resvick restored the corner position at mid-point between opposing section corners and in a cardinal direction to the center-line of the road.

1975 Corner Reference recovered:

R. Pine	9"	S45°W	101.99 feet
---------	----	-------	-------------

Monument is 1.00 feet below the surface of the road.

New Corner Reference:

R. Pine	14"	N12°W	82.45 feet
---------	-----	-------	------------

3. Southeast Section Corner

In 1975, Jean Resvick accepted the road intersection which is in relation to natural calls, as the best available evidence for restoring the corner position.

1975 Corner References recovered:

R. Pine	14"	N62°E	41.43 feet
R. Pine	12"	S57°E	55.11 feet
R. Pine	15"	N46°W	53.25 feet

Monument is 0.80 feet below the surface of the road.

Stock No. 26273

T39N R14E - SECTION 35

page 3 of 5

4. South Quarter Corner

In 1982, William B. Cochrane accepted a fence line South and the center-line of a woods road as the best available evidence for restoring the corner position.

1982 Corner References recovered:

Maple	9"	S36°W	48.17 feet
Maple	10"	N47°W	53.83 feet

Monument is 0.50 feet below the surface of the road.

5. Southwest Section Corner

Corner position is restored at proportionate distance and on line between the South Quarter Corner of Section 34 and the South Quarter Corner of Section 35.

Corner References:

Maple	9"	N51°E	16.57 feet
Maple	5"	S03°E	32.56 feet
Maple	14"	S84°W	46.98 feet
Maple	16"	N17°W	40.24 feet
Steel Sign Post		South	10.50 feet

Monument is 0.50 feet below the surface of the road.

6. West Quarter Corner

Corner position is restored at proportionate distance and on line between the Northwest and Southwest Section Corners of Section 35.

Corner References:

Maple	7"	N82°E	9.37 feet
Maple	7"	N07°W	34.46 feet
Steel Sign Post		NW	1.00 feet

7. Northwest Section Corner

Corner position is restored by accepting a cedar post point and a fence line East as the best available evidence.

Corner References:

Spruce	4"	N18°E	31.52 feet
Spruce	6"	S45°E	41.27 feet
Spruce	4"	S30°W	27.40 feet
Spruce	5"	N39°W	37.93 feet
Steel Sign Post		NE	3.00 feet

8. North Quarter Corner

Corner position is restored at proportionate distance and on line between the Northeast and Northwest Section Corners of Section 35.

Corner References:

Maple	18"	S23°W	24.33 feet
Maple	22"	N34°W	29.38 feet
Steel Sign Post		South	1.00 feet

9. North Sixteenth Corner between Sections 35 and 36

In 1975, Jean Resvick established the corner position at mid-point and on line between the Northeast Section Corner and the East Quarter Corner.

1975 Corner References recovered:

R. Pine	12"	S50°W	46.57 feet
R. Pine	14"	N65°W	29.30 feet

Monument is 0.50 feet below the surface of the road.

10. South Sixteenth Corner between Sections 35 and 36

In 1975, Jean Resvick established the corner position at mid-point and on line between the Southeast Section Corner and the East Quarter Corner.

1975 Corner References recovered:

R. Pine	15"	N52°E	58.42 feet
R. Pine	13"	S47°W	50.54 feet

Monument is 0.50 feet below the surface of the road.

Stock No. 26273

## T39N R14E - SECTION 35

page 4 of 5

11. East Sixteenth Corner between Sections 35 and 2, T38-39N

In 1982, William B. Cochrane established the corner position at mid-point and on line between the Southeast Section Corner and the South Quarter Corner. 1982 Corner References recovered:

Basswood	14"	N37°E	46.33 feet
Maple	10"	S55°E	97.00 feet

Monument is 0.50 feet below the surface of the road.

CORNERS ESTABLISHED1. East-Sixteenth Corner between Sections 26 and 35

Corner position is established at mid-point and on line between the North Quarter Corner and the Northeast Section Corner.

Corner References:

Basswood	12"	S59°E	25.56 feet
Sugar Maple	8"	S50°W	14.04 feet
Steel Sign Post		North	2.05 feet

2. Northeast Sixteenth Corner

Corner position is established at the intersection of straight lines between opposing Sixteenth Corner positions on the perimeter of the Northeast quarter of the section.

Corner References:

Sugar Maple	8"	S16°E	38.89 feet
Ash	7"	N67°W	6.94 feet
Steel Sign Post		East	0.75 feet

3. West Sixteenth Corner between Sections 35 and 2, T38-39N

Corner position is established at mid-point and on line between the South Quarter Corner and the Southwest Section Corner.

Corner References:

S. Maple	12"	N33°E	34.12 feet
S. Maple	11"	N50°W	27.32 feet
Steel Sign Post		North	9.14 feet

4. Southwest-Sixteenth Corner

Corner position is established at the intersection of straight lines between opposing sixteenth corner positions on the perimeter of the Southwest quarter of the Section.

Corner References:

Tamarack	5"	N68°E	29.14 feet
Tamarack	4"	S26°W	3.53 feet
Steel Sign Post		NW	1.08 feet

5. Center-South Sixteenth Corner

Corner position is established at mid-point and on line between the Center Quarter Corner and the South Quarter Corner.

Corner References:

Ironwood(Double)	5"	N41°E	18.31 feet
Ironwood	3"	N41°W	27.16 feet
Steel Sign Post		North	1.10 feet

6. Southeast Sixteenth Corner

Corner position is established at the intersection of straight lines between opposing sixteenth corner positions on the perimeter of the Southeast quarter of the Section.

Corner References:

S. Maple	11"	S83°E	24.22 feet
S Maple(Double)	8"	N25°W	8.20 feet
Steel Sign Post		NE	0.98 feet

Stock No. 26273

T39N R14E - SECTION 35

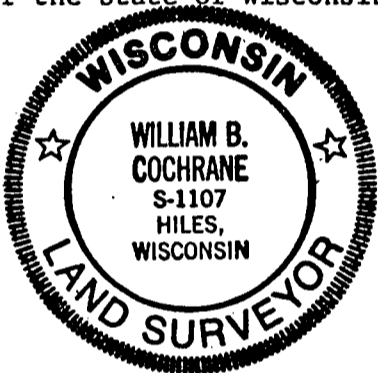
page 5 of 5

SURVEYOR'S AFFIDAVIT

State of Wisconsin)  
County of Forest ) ss

I, William B. Cochrane, Land Surveyor, U.S.D.A. Forest Service, and a Registered Land Surveyor in the State of Wisconsin, hereby certify that I have surveyed and sub-divided Section 35, Township 39 North, Range 14 East, Fourth Principal Meridian, State of Wisconsin.

The plat map and survey notes herewith are a correct representation of the land surveyed and sub-divided. I have surveyed and sub-divided said section in accordance with the rules for the Survey of Public Lands and the Statutes of the State of Wisconsin.



William B. Cochrane  
Land Surveyor, U.S.D.A. Forest Service  
R.L.S. State of Wisconsin  
Certificate #S-1107

SURVEYOR'S AFFIDAVIT

State of Wisconsin)  
County of Forest ) ss

I, Gary L. Pisoni, Contract Land Surveyor for the U.S.D.A. Forest Service, and a Registered Land Surveyor in the State of Wisconsin, hereby certify that I have surveyed the boundary lines and monumented the Sixteenth Corners of Section 35, Township 39 North, Range 14 East, Fourth Principal Meridian, State of Wisconsin.

I have surveyed and monumented said Section in accordance with the rules for the Survey of Public Lands, the Statutes of the State of Wisconsin and the subdivision field notes computed by William B. Cochrane, Land Surveyor, U.S.D.A. Forest Service.

Gary L. Pisoni  
Land Surveyor  
R.L.S. State of Wisconsin  
Certificate #S-1634

Survey requested by; Edward [Signature] 3-22-89

District Ranger

Date

Date of Survey: 1988

