

Stock No. 26273

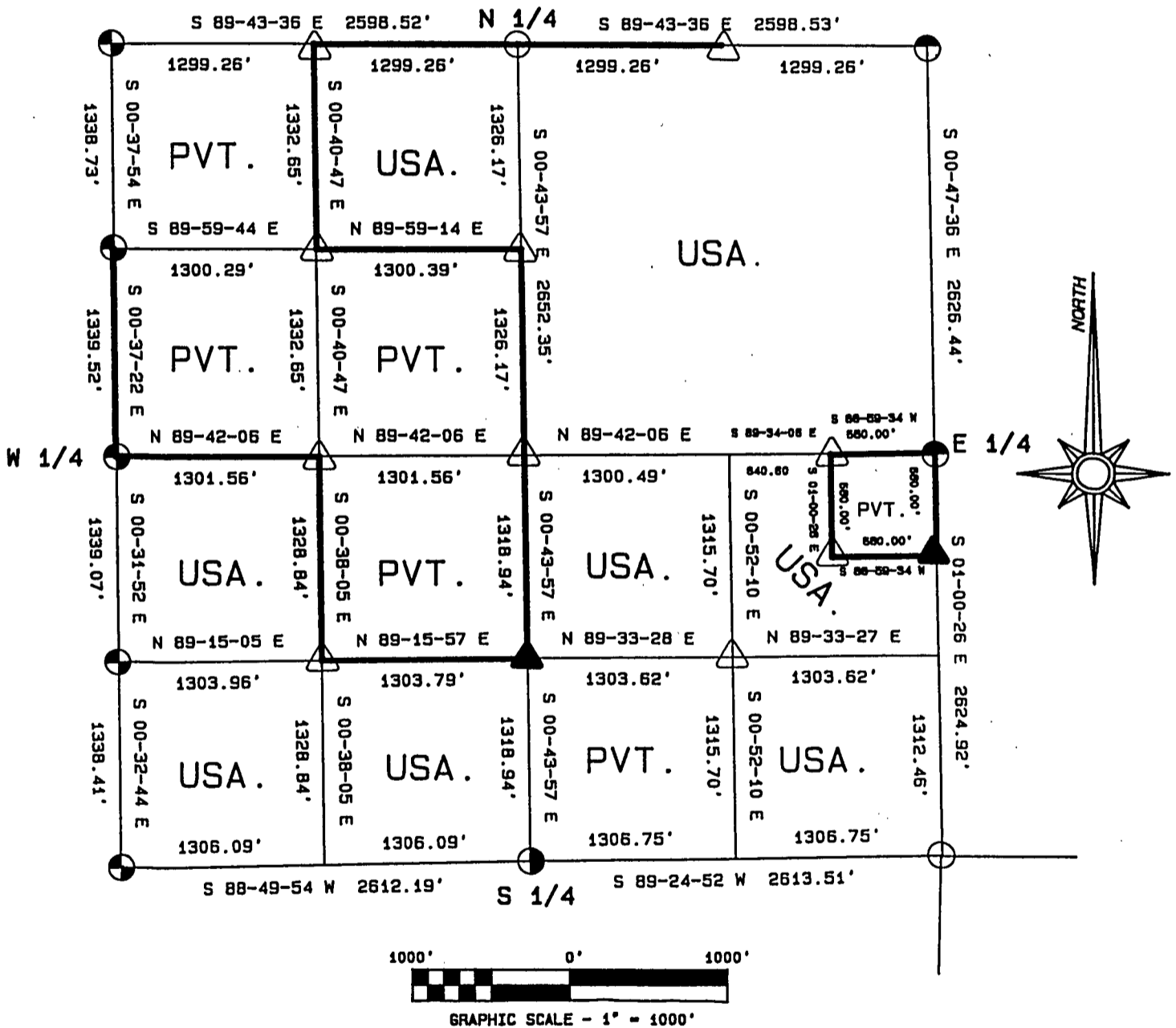
FOREST CO SURVEYOR
 FILE # 391436-19890504
 DATE _____ BY _____

PLAT OF SURVEY FOR CERTIFIED LAND CORNER
 RESTORATION AND ESTABLISHMENT

BEING THE CORNERS FOR THE NE 1/4 OF THE NW 1/4, THE NE 1/4, THE NW 1/4
 AND S 1/2 OF THE SW 1/4, THE N 1/2 AND SE 1/4 OF THE SE 1/4
 AND THE EXCEPTION IN THE NE 1/4 OF THE SE 1/4

SECTION 36, TOWNSHIP 39 NORTH, RANGE 14 EAST

COUNTY OF FOREST, STATE OF WISCONSIN



LEGEND

- 2 1/2 INCH DIAMETER ALUMINUM PIPE MONUMENT 36 INCHES LONG WITH AN ALUMINUM CAP.
- ◐ 2 1/2 INCH DIAMETER ALUMINUM PIPE MONUMENT 60 INCHES LONG WITH AN ALUMINUM CAP.
- △ 1 INCH DIAMETER ALUMINUM PIPE MONUMENT 36 INCHES LONG WITH AN ALUMINUM CAP.
- ▲ 1 INCH DIAMETER ALUMINUM PIPE MONUMENT 60 INCHES LONG WITH AN ALUMINUM CAP.
- ◑ 2 1/2 INCH DIAMETER GALVANIZED IRON PIPE MONUMENT 36 INCHES LONG WITH BRASS CAP.
- BOUNDARY LINE MARKED TO FOREST SERVICE STANDARD.
- ◒ 2 1/2 INCH DIAMETER GALVANIZED IRON PIPE MONUMENT 60 INCHES LONG WITH BRASS CAP.

Stock No. 26273

T39N R14E - SECTION 36

page 2 of 6

SURVEY NOTES

This plat of survey for Section 36, Township 39 North, Range 14 East is the product of a Photogrammetric Project linked with Global Satellite Positioning procedures to establish the co-ordinate values used as control to recover and restore lost Section and Quarter Section Corners and to establish positions for Sixteenth and Property Corners within the Sections in this project area.

The 10 G.P.S. Stations were assigned State Plane Co-ordinate Values. The values were then transferred to the target locations for ground control through photogrammetric bridging.

All bearings are geodetic bearings based on the Wisconsin North Zone Lambert Projection and have been transferred to the boundary lines within this project using a Wild North Seeking Gyro. All distances are geodetic grid distances.

This Survey was made by the U.S. Department of Agriculture, Forest Service, for the purpose of recovering, restoring, establishing, marking and perpetuating the corners and boundary lines of U.S. Government Land on the sections within this project area.

The Original Government Survey of this township was made in 1865 by William E. Daugherty.

The field notes of this survey and a copy of this and the remaining sections in this project area are on file in the Forest Supervisor's Office at Rhineland, Wisconsin, and the District Ranger's Office at Florence, Wisconsin.

CORNERS RECOVERED AND RESTORED1. Northeast Section Corner

In 1975, Jean Resvick restored the corner position by accepting a scribed cedar post and original bearing tree evidence.

1975 Corner References recovered:

Center Line of R/R Track West	44.50 feet
Steel Sign Post East	Alongside Monument

2. East Quarter Corner

In 1974, Jean Resvick restored the corner position by accepting an old post point and original bearing tree evidence.

1974 Corner References recovered:

Tamarack	4"	N19°W	36.38 feet
W. Spruce	10"	S75°E	62.11 feet
Steel Sign Post		West	1.00 feet
Re-set Steel Sign Post		NE	4.00 feet

3. Southeast Section Corner

In 1985, William B. Cochrane restored the corner position from single proportionate methods and an original swamp call to the West.

1985 Corner References recovered:

W. Birch	9"	N40°E	34.45 feet
Spruce	6"	N60°W	26.26 feet

Both of the above bearing trees were cut down for the Air Photo Project.

Spruce	10"	S30°E	59.12 feet
Spruce	6"	S28°W	67.49 feet
Steel Sign Post		NW	1.00 feet

New Corner References:

Balsam	13"	N48°W	52.86 feet
Balsam	14"	N18°W	63.50 feet
Re-set Steel Sign Post		SW	3.00 feet

Stock No. 26273

T39N R14E - SECTION 36

page 3 of 6

4. South Quarter Corner

In 1985, William B. Cochrane accepted a post point and a swamp call to the West as the best available evidence for restoring the corner position.

1985 Corner References recovered:

Cedar	9"	N45°E	11.25 feet
The above bearing tree was cut down for the Air Photo Project.			
Cedar	11"	S47°E	28.45 feet
Steel Sign Post		SE	0.50 feet

New Corner References:

Cedar	6"	N75°E	23.95 feet
Re-set Steel Sign Post		SE	3.00 feet

5. Southwest Section Corner

In 1975, Jean Resvick accepted the road intersection which is in relation to natural calls, as the best available evidence for restoring the corner position.

1975 Corner References recovered:

R. Pine	14"	N62°E	41.43 feet
R. Pine	12"	S57°E	55.11 feet
R. Pine	15"	N46°W	53.25 feet

Monument is 0.80 feet below the surface of the road.

6. West Quarter Corner

In 1975, Jean Resvick restored the corner position at mid-point between opposing section corners and in a cardinal direction to the center-line of the road.

1975 Corner Reference recovered:

R. Pine	9"	S45°W	101.99 feet
New Corner Reference:			
R. Pine	14"	N12°W	82.45 feet

Monument is 1.00 feet below the surface of the road.

7. Northwest Section Corner

In 1975, Jean Resvick accepted the center-line of the road and a fence line East as the best available evidence for restoring the corner position.

1975 Corner References recovered:

Elm(Dead)	10"	N22°E	57.20 feet
Aspen	12"	S49°E	62.54 feet
Elm(Down)	12"	S82°W	35.69 feet
Cherry	11"	N49°W	47.95 feet

Monument is 0.70 feet below the surface of the road.

New Corner Reference:

Maple	5"	S70°W	51.45 feet
-------	----	-------	------------

8. North Quarter Corner

Corner position is restored at mid-point and on line between the Northeast and Northwest Section Corners.

Corner References:

Maple	12"	N61°E	80.89 feet
Aspen	4"	S28°W	19.19 feet
Balsam	3"	N38°W	14.56 feet
Steel Sign Post		SE	0.75 feet

9. South Sixteenth Corner between Sections 35 and 36

In 1975, Jean Resvick established the corner position at mid-point and on line between the Southwest Section Corner and the West Quarter Corner.

1975 Corner References recovered:

R. Pine	15"	N52°E	58.42 feet
R. Pine	13"	S47°W	50.54 feet

Monument is 0.50 feet below the surface of the road.

Stock No. 26273

T39N R14E - SECTION 36

page 4 of 6

10. North Sixteenth Corner between Sections 35 and 36

In 1975, Jean Resvick established the corner position at mid-point and on line between the Northwest Section Corner and the West Quarter Corner.

1975 Corner References recovered:

R. Pine	12"	S50°W	46.57 feet
R. Pine	14"	N65°W	29.30 feet

Monument is 0.50 feet below the surface of the road.

CORNERS ESTABLISHED1. Center Quarter Corner

Corner position is established at the intersection of straight lines between opposing quarter corner positions on the perimeter of the section.

Corner References:

Balsam	8"	S46°W	39.49 feet
Basswood	8"	N72°W	54.35 feet
Steel Sign Post		South	0.90 feet

2. Center-North Sixteenth Corner

Corner position is established at mid-point and on line between the Center Quarter Corner and the North Quarter Corner.

Corner References:

W. Ash	8"	N34°E	18.58 feet
S. Maple	7"	N58°W	23.99 feet
Steel Sign Post		SE	1.00 feet

3. Northwest Sixteenth Corner

Corner position is established at the intersection of straight lines between opposing sixteenth corner positions on the perimeter of the Northwest quarter of the section.

Corner References:

S. Maple	8"	N81°E	27.47 feet
S. Maple	4"	N58°W	31.12 feet
Steel Sign Post		South	0.50 feet

4. Center-West Sixteenth Corner

Corner position is established at mid-point and on line between the Center Quarter Corner and the West Quarter Corner.

Corner References:

Basswood	8"	N39°E	24.98 feet
Basswood	9"	N20°W	26.31 feet
Steel Sign Post		West	1.17 feet

5. Southwest Sixteenth Corner

Corner position is established at the intersection of straight lines between opposing sixteenth corner positions on the perimeter of the Southwest quarter of the section.

Corner References:

S. Maple	3"	S 5°E	14.98 feet
S. Maple	5"	S72°W	22.13 feet
Steel Sign Post		SE	1.50 feet

6. Center-South Sixteenth Corner

Corner position is established at mid-point and on line between the Center Quarter Corner and the South Quarter Corner.

Corner References:

Cedar	6"	S18°W	18.42 feet
Cedar	6"	N34°W	14.03 feet
Steel Sign Post		East	1.12 feet

Stock No. 26273

T39N R14E - SECTION 36

page 5 of 6

7. West Sixteenth Corner between Sections 25 and 36

Corner position is established at mid-point and on line between the North Quarter Corner and the Northwest Section Corner.

Corner References:

Basswood	7"	N78°W	18.63 feet
Basswood	6"	N28°W	37.26 feet
Steel Sign Post		South	12.90 feet

8. East Sixteenth Corner between Sections 25 and 36

Corner position is established at mid-point and on line between the North Quarter Corner and the Northeast Section Corner.

Corner References:

Tamarack	5"	S81°E	38.29 feet
Cedar	4"	S 2°W	5.03 feet
Steel Sign Post		NW	1.29 feet

9. Property Corner #1

Corner position is established at a right angle to the South half of the East section line, and at a distance of 660 feet from the East Quarter Corner.

Corner References:

S. Maple	12"	N58°E	18.13 feet
R. Maple	7"	S54°E	11.26 feet
Steel Sign Post		SW	0.82 feet

10. Property Corner #2

Corner position is established parallel to the South half of the East section line, and at a distance of 660 feet from Property Corner #1.

Corner References:

W. Ash	11"	N78°E	22.48 feet
S. Maple	8"	N72°W	4.09 feet
Steel Sign Post		South	1.00 feet

11. Property Corner #3

Corner position is established on the South half of the East section line, at a distance of 660 feet from the East Quarter Corner.

Corner References:

Iron Pipe	1"	East	12.75 feet
Steel Sign Post		East	1.67 feet
Steel Sign Post		South	1.67 feet
Steel Sign Post		West	1.62 feet

Stock No. 26273

T39N R14E - SECTION 36

page 6 of 6

SURVEYOR'S AFFIDAVIT

State of Wisconsin)
County of Forest) ss

I, William B. Cochrane, Land Surveyor, U.S.D.A. Forest Service, and a Registered Land Surveyor in the State of Wisconsin, hereby certify that I have surveyed and sub-divided Section 36, Township 39 North, Range 14 East, Fourth Principal Meridian, State of Wisconsin.

The plat map and survey notes herewith are a correct representation of the land surveyed and sub-divided. I have surveyed and sub-divided said section in accordance with the rules for the Survey of Public Lands and the Statutes of the State of Wisconsin.



William B. Cochrane
Land Surveyor, U.S.D.A. Forest Service
R.L.S. State of Wisconsin
Certificate #S-1107

SURVEYOR'S AFFIDAVIT

State of Wisconsin)
County of Forest) ss

I, Gary L. Pisoni, Contract Land Surveyor for the U.S.D.A. Forest Service, and a Registered Land Surveyor in the State of Wisconsin, hereby certify that I have surveyed the boundary lines and monumented the Sixteenth Corners of Section 36, Township 39 North, Range 14 East, Fourth Principal Meridian, State of Wisconsin.

I have surveyed and monumented said Section in accordance with the rules for the Survey of Public Lands, the Statutes of the State of Wisconsin and the subdivision field notes computed by William B. Cochrane, Land Surveyor, U.S.D.A. Forest Service.



Gary L. Pisoni
Land Surveyor
R.L.S. State of Wisconsin
Certificate #S-1634

Survey requested by; [Signature]

3-22-89

District Ranger

Date

Date of Survey: 1988

