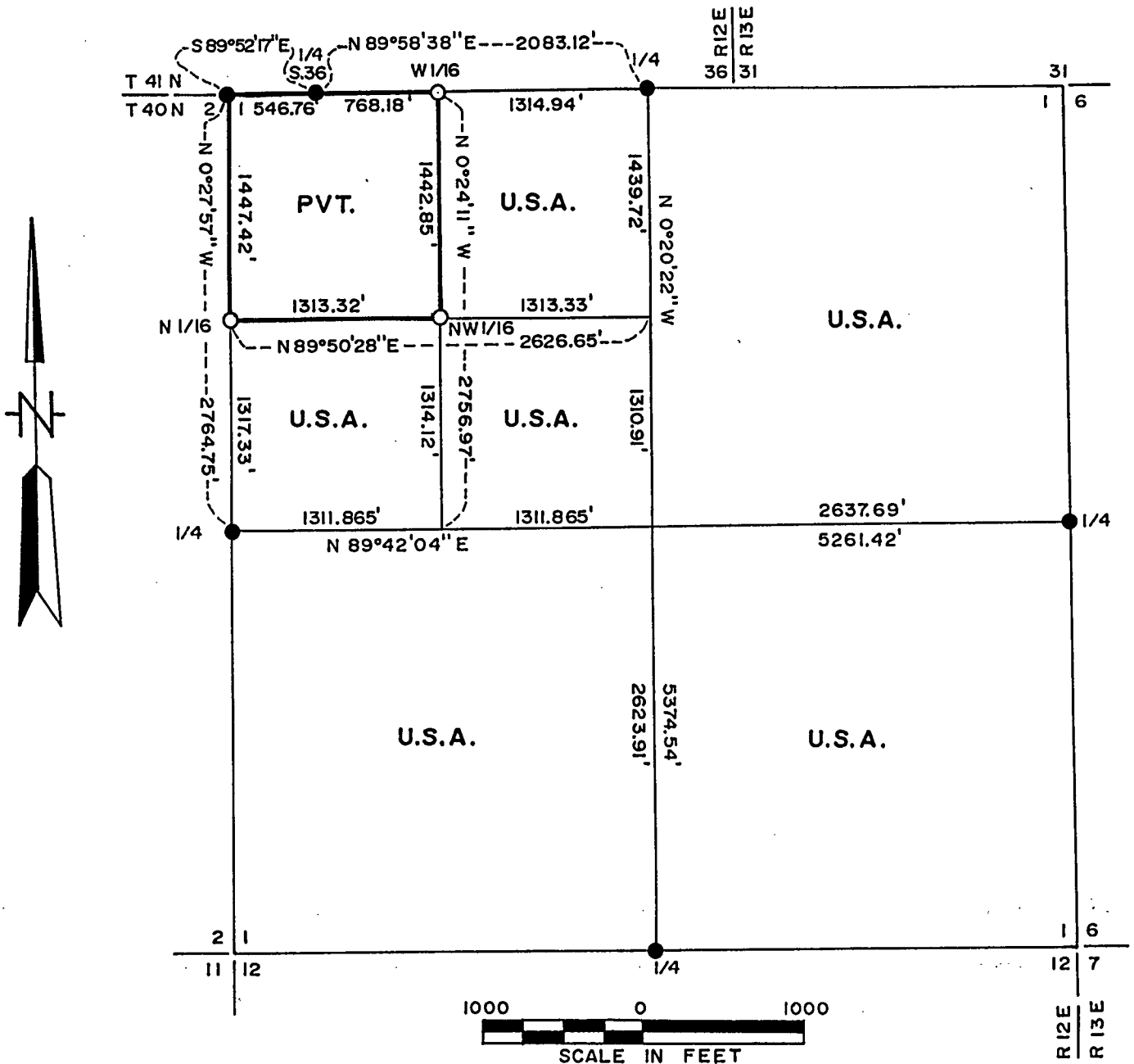


PLAT OF SURVEY FOR CERTIFIED LAND CORNER
RESTORATION AND ESTABLISHMENT

BEING THE CORNERS FOR ALL OF THE NW 1/4 EXCEPT THE NW 1/4
OF THE NW 1/4, SECTION 1, T 40 N, R 12 E
FOURTH PRINCIPAL MERIDIAN
COUNTY OF FOREST, STATE OF WISCONSIN



LEGEND

- Boundary line marked to standard.
- 1 inch diam. aluminum monument, 36 inches long, with aluminum cap, stamped to identify the corner.
- 1941 General Land Office Dependent Resurvey Monument

Conversion Factors: Feet to meters - 0.304801
Meters to feet - 3.280833

FOREST CO SURVEYOR

FILE # 401201-19870000

DATE _____ BY _____

SURVEY NOTES

This survey was made by Stephen J. Favorite, a Registered Land Surveyor in the State of Wisconsin, for the U.S. Department of Agriculture, Forest Service, to establish and mark controlling subdivision corners of the U.S. Government Land in Section 1, Township 40 North, Range 12 East, Fourth Principal Meridian, Vilas County, Wisconsin.

The original Government survey of this township was made in 1859.

A dependent re-survey was made by the U.S. Department of the Interior General Land Office in 1941. The corners of the dependent re-survey on the perimeter of Section 1 was recovered as control for the subdivision survey of Section 1.

The U.S. Government acquired title to lands in Section 1 in 1938 and 1943.

The bearings between corner positions are true bearings as determined by reference to solar observations. The accuracy of this survey exceeds the State requirements of 1 in 3000.

The field notes and a copy of the Plat of Survey are on file in the Forest Supervisor's Office at Rhinelander, Wisconsin.

CORNERS RECOVERED AND RESTORED1. Quarter corner between Sections 1 and 12.

Corner is marked by a 2" brass iron pipe, 1941 Dependent Re-survey.

Corner references recovered:

S. Maple	16"	S 32 3/4° E	52.14 feet
S. Maple	16"	N 64 3/4° E	50.49 feet

New Corner references:

S. Maple	8"	S 26° W	33.35 feet
S. Maple	8"	N 38° W	28.52 feet

Steel Post and Sign		Northeast	1.0 feet
---------------------	--	-----------	----------

2. Quarter Corner between Sections 1 and 2.

Corner is marked by a 2" brass capped iron pipe, 1941 Dependent Resurvey.

Corner references recovered:

S. Maple (dying)	17"	S 77 1/2° E	7.26 feet
Maple stump	7"	N 81 1/2° W	14.52 feet

New corner references:

S. Maple	6"	N 2° E	58.73 feet
S. Maple	8"	S 88° W	12.74 feet
S. Maple	12"	S 18° W	22.29 feet
S. Maple	11"	N 83° E	20.54 feet

3. Section corner common to Sections 1 and 2 on Township line.

Corner is marked by a 6" round brass capped concrete monument, 1941 Dependent Resurvey.

Corner references recovered:

Birch Stump	12"	S 10° W	20.7 feet
Y. Birch Stub	26"	S 76° E	No scribing visible
Y. Birch	7"	S 29° E	10.01 feet
S. Maple	8"	S 70° W	30.88 feet

New corner references:

S. Maple	6"	N 21° E	17.70 feet
B. Spruce	12"	S 79° E	17.17 feet
Steel Sign and Post		NE	0.5 foot

4. South Quarter Corner, Section 36, T 41 N, R 12 E on Township Line.

Corner is marked by a 6" round brass capped concrete monument, 1941 Dependent Resurvey.

Corner references recovered:

B. Spruce	14"	N 28° W	9.27 feet
B. Spruce	12"	N 30° E	14.88 feet
Spruce (Stump)		N 41° E	1.7 feet

New corner references:

B. Spruce	5"	S 87° W	11.56 feet
B. Spruce	8"	S 49° E	8.41 feet
Steel sign and post		NE	0.5 foot

5. North Quarter Corner, Section 1, T 40 N, R 12 E on Township Line.

Corner is marked by a 2" brass capped iron pipe, 1941 Dependent Resurvey.

Corner references recovered:

Y. Birch (Stump)	18"	S 38° E	20.04 feet
Hemlock	26"	S 50° W	1.32 feet

New corner references:

Hemlock	14"	N 71° E	21.67 feet
S. Maple	16"	N 37° E	28.17 feet
S. Maple	12"	N 33° W	17.80 feet

Steel post and sign		NE	1.0 foot
---------------------	--	----	----------

6. Quarter Corner between Section 1(R 12 E) and Section 6(R 13 E).

Corner is marked by a 2" brass capped iron pipe, 1941 Dependent Resurvey.

Corner references recovered:

Hemlock	12"	N 52 1/4° E	41.58 feet
Maple	12"	N 34 3/4° W	67.98 feet

CORNERS ESTABLISHED1. North Sixteenth corner between Sections 1 and 2.

Corner position established by a single proportionate measure between the west Quarter corner and the Northwest corner of Section 1.

New corner references:

W. Spruce	7"	N 3° E	39.71 feet
B. Spruce	8"	S 88° W	31.44 feet
Steel post and sign		SW	1.2 feet

2. West Sixteenth corner on the north line of Section 1.

Corner position established at the mid point between the North Quarter corner and the Northwest corner of Section 1 on line between the North Quarter corner of Section 1, T 40 N, R 12 E and the South Quarter corner of Section 36, T 41 N, R 12 E.

New corner references:

S. Maple	5"	N 4° E	24.04 feet
S. Maple	7"	West	17.65 feet
Steel post and sign		NE	2.0 feet

3. Northwest Sixteenth Corner.

Corner position established at the intersection of straight lines between opposing sixteenth corner positions of the Northwest quarter of Section 1.

Corner references:

B. Cherry	14"	S 54° E	13.67 feet
W. Spruce	9"	S 33° W	64.88 feet
Steel post and sign		SE	1.0 foot

SURVEYOR'S AFFIDAVIT

State of Wisconsin)
County of Forest) ss

I, Stephen J. Favortie, Cadastral Surveyor and a registered land surveyor in the State of Wisconsin, hereby certify that I have surveyed and subdivided Section 1, Township 40 North, Range 12 East, Fourth Principal Meridian, State of Wisconsin.

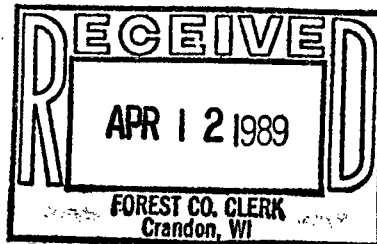
The plat map and survey notes herewith are a correct representation of the land surveyed and divided. I have surveyed and subdivided said section in accordance with the rules for the survey of public lands and with the statutes of the State of Wisconsin.



Stephen J. Favorite
Stephen J. Favorite
Cadastral Surveyor
R.L.S. State of Wisconsin
Certificate S-1616

Date of Survey: 1987

Survey requested by; *Pamela Syora* *11/17/88*
District Ranger Date



Dora C. James