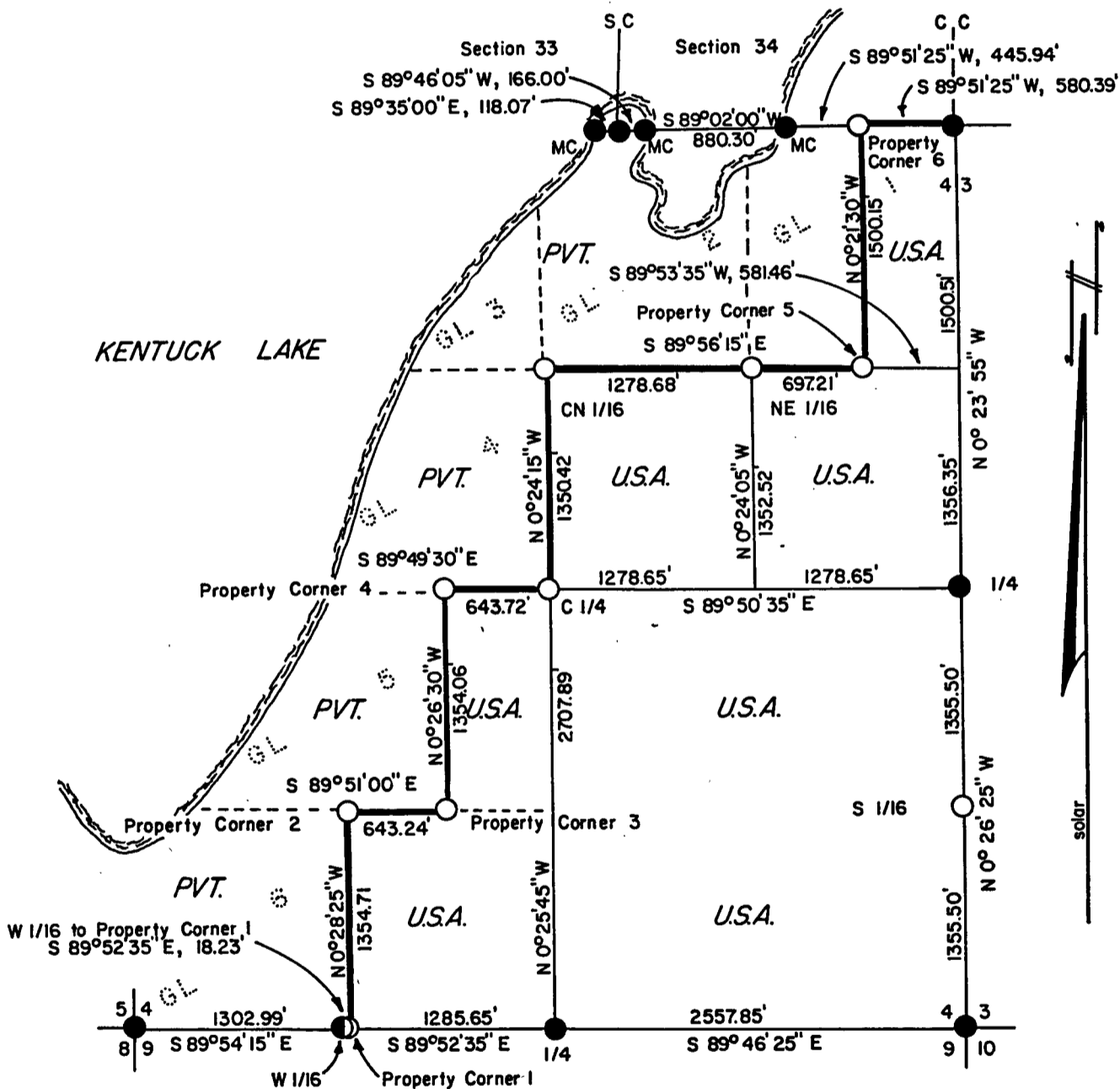
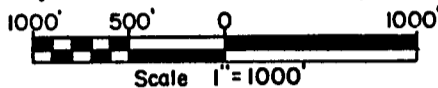


Stock No. 26273

PLAT OF SURVEY U.S. GOVERNMENT LAND

BEING THE SE 1/4, THE S 1/2 OF THE NE 1/4, THE EAST 40 AC. OF G.L. 6, THE EAST 20 AC. OF G.L. 5, AND THE EAST 20 AC. OF G.L. 1, SECTION 4, TOWN 40 NORTH, RANGE 12 EAST, 4TH PRINCIPAL MERIDIAN, FOREST COUNTY, STATE OF WISCONSIN.



LEGEND

- = G.L.O. Monument w/Brass Cap found in place.
- = 2"x36" aluminum pipe w/3" aluminum tablet stamped to identify corner.
- (with dot) = U.S.F.S. Monument w/Brass Cap found in place.
- sc = Standard Corner.
- cc = Closing Corner.

FOREST CO SURVEYOR
FILE # 401204-1985000
DATE _____ BY _____

Stock No. 26273

T 40 N R 12 E, SECTION 4

SURVEY NOTES

This survey was made by North Country Surveyors pursuant to United States Department of Agriculture, Forest Service Contract "No. 53-56A6-4-00035, Cadastral Survey" for the purpose of recovering, restoring, establishing, marking and perpetuating the corners and boundary lines of the U.S. Government land on the perimeter and within Section 4, T40N, R12E, Fourth Principal Meridian, Forest County, Wisconsin as shown on the plat herewith.

This township was resurveyed by the General Land Office in 1941.

Bearings between corner positions are true bearings by reference to a solar observation. All distances shown thereon are in feet and hundredths of feet. The control traverse was measured by use of electronic distance measuring equipment to an accuracy of one part in 20,000. Corners recovered, restored and established by this survey are marked by the monument described in the map legend. Each monumented corner position is referenced to blazed and scribed bearing trees and described reference objects.

CORNERS RECOVERED1. Corner to Sections 4-5-8-9

Corner is monumented by a G.L.O. brass cap.

Corner References:

Sugar Maple	12"	N28°30'E	81.62 feet
Sugar Maple	12"	S45°E	33.10 feet
White Birch	14"	S60°W	76.57 feet
Sugar Maple	14"	N46°W	48.79 feet
Sign Post (Wood)		South	4.70 feet

Stock No. 26273

T 40 N R 12 E, SECTION 10

2. Corner to Sections 3-4-9-10

Corner is monumented by a G.L.O. brass cap.

Corner References:

Sugar Maple	8"	N60°W	28.29 feet
Sugar Maple	6"	S47½°E	37.75 feet
White Birch	10"	S37½°W	34.83 feet
White Birch	10"	N35½°W	35.35 feet
Wood Sign Post		S30°W	1.00 feet

3. Corner to Sections 4-3 (on correction line)(closing corner)

Corner is monumented by a G.L.O. brass cap.

Corner References:

Sugar Maple	15"	S63°E	12.60 feet
Sugar Maple	14"	S26°W	14.89 feet
Sugar Maple	11"	N75°W	17.08 feet
Sugar Maple	7"	N50°E	31.50 feet
Steel Sign Post		Southwest	1.00 feet

4. Meander Corner to Section 4 (on correction line)

Corner is monumented by a G.L.O. brass cap.

Corner References:

Sugar Maple	5"	N30°E	35.18 feet
Hemlock	6"	N68°E	29.22 feet
Yellow Birch	7"	S62°E	30.65 feet
White Cedar	9"	S50°W	25.65 feet
Steel Sign Post		N13°E	1.26 feet

5. Meander Corner to Sections 34-4 (on correction line)

Corner is monumented by a G.L.O. brass cap on the West shore of a bay in Kentuck Lake.

Corner References:

Hemlock	14"	N32°W	36.40 feet
Yellow Birch	12"	S27°E	21.03 feet
Sugar Maple	5"	S25°W	28.00 feet
Steel Sign Post		S2°E	1.62 feet

Stock No. 26273

T 40 N R 12 E, SECTION 14

6. Corner to Sections 33-34 (Standard corner on correction line)

Corner is monumented by a G.L.O. brass cap.

Corner References:

Yellow Birch	21"	N30°E	37.70 feet
Sugar Maple	5"	S9°W	36.49 feet
Hemlock	18"	N6°W	37.93 feet
Yellow Birch	33"	N65°W	21.23 feet
Steel Sign Post		S56°W	1.53 feet

7. Meander Corner to Sections 33-4 (on correction line)

Corner is monumented by a G.L.O. brass cap on the East shore of a peninsula on Kentuck Lake.

Corner References:

Hemlock	21"	S25°E	20.30 feet
Hemlock	12"	N44°E	50.90 feet
Hemlock	9"	S21°W	35.74 feet
Steel Sign Post		Southwest	1.00 feet

8. Quarter Corner to Sections 4-9

Corner is monumented by a G.L.O. brass cap.

Corner References:

Sugar Maple	8"	N21°E	28.42 feet
Sugar Maple	14"	S70°E	34.50 feet
Sugar Maple	9"	N76°E	10.17 feet
Sugar Maple	10"	S22°E	18.30 feet
Wood Sign Post		South	0.80 feet

9. Quarter Corner to Sections 3-4

Corner is monumented by a G.L.O. brass cap.

Corner References:

Maple	20"	N57°W	9.80 feet
Maple	10"	S17°E	23.65 feet
Maple	8"	N57°E	21.53 feet
Maple	18"	S75°W	19.35 feet
Wood Sign Post		S78°W	1.30 feet

Stock No. 26273

T 40 N R 12 E, SECTION 4

10. West 1/16 Corner to Sections 4-9

Corner is monumented by a U.S.F.S. brass cap.

Corner References:

Sugar Maple	12"	S53°E	17.50 feet
Sugar Maple	16"	N12½°W	29.43 feet
Sugar Maple	18"	S24½°E	11.90 feet
Wood Sign Post		S60°E	1.14 feet

11. South 1/16 Corner to Sections 3-4

Corner is monumented by a 2"x36" aluminum pipe with a 3" aluminum tablet.

Corner References:

Sugar Maple	9"	N47°W	25.75 feet
White Pine	28"	S32°W	21.70 feet
White Pine	26"	S43½°E	47.90 feet
RIPCO corner	2" brass cap	N44°E	1.03 feet
Steel Sign Post		N57°W	0.44 feet

CORNERS RESTORED1. Property Corner #1, Section 4

Corner is monumented by a 2"x36" aluminum pipe with a 3" aluminum tablet that replaces a 2" I.P. set by Tuttle. This is the Southwest corner of the East 40 acres of Government Lot 6.

Corner References:

Sugar Maple	18"	S51°W	17.10 feet
Sugar Maple	11"	S27°W	11.06 feet
Steel Sign Post		N50°W	1.30 feet

2. Property Corner #2, Section 4

Corner is monumented by a 2"x36" aluminum pipe with a 3" aluminum tablet that replaces a 2" I.P. set by Tuttle. This is the Northwest corner of the East 40 acres of Government Lot 6.

Corner References:

Sugar Maple	16"	S17°W	16.80 feet
Basswood	5"	N45°W	13.06 feet
Sugar Maple	7"	N42°E	24.05 feet
Steel Sign Post		Northwest	1.00 feet

Stock No. 26273

T 40 N R 12 E, SECTION 4

3. Property Corner #3, Section 4

Corner is monumented by a 2"x36" aluminum pipe with a 3" aluminum tablet that replaces a 2" I.P. set by Tuttle. This is the Southwest corner of the East 20 acres of Government Lot 5.

Corner References:

Yellow Birch	16"	N88°E	9.93 feet
Sugar Maple	6"	S40°W	15.68 feet
Sugar Maple	9"	N18°W	13.18 feet
Steel Sign Post		Southeast	1.10 feet

4. Property Corner #4, Section 4

Corner is monumented by a 2"x36" aluminum pipe with a 3" aluminum tablet that replaces a 2" I.P. set by Tuttle. This is the Northwest corner of the East 20 acres of Government Lot 5.

Corner References:

Sugar Maple	11"	N51½°E	6.07 feet
Sugar Maple	17"	N71½°W	12.44 feet
Steel Sign Post		Southeast	1.50 feet

5. Center Quarter Corner to Section 4

Corner is monumented by a 2"x36" aluminum pipe with a 3" aluminum tablet that replaces a 2" I.P. set by Tuttle.

Corner References:

Sugar Maple	5"	South	17.64 feet
Sugar Maple	10"	S37°W	22.79 feet
Sugar Maple	11"	N56°W	8.36 feet
Steel Sign Post		Southeast	1.00 feet

6. Center-North 1/16 Corner to Section 4

Corner is monumented by a 2"x36" aluminum pipe with a 3" aluminum tablet that replaces a 2" I.P. set by Tuttle.

Corner References:

Sugar Maple	14"	S15°E	23.50 feet
Sugar Maple	7"	S50½°W	18.01 feet
Basswood	17"	N69°E	21.31 feet
Steel Sign Post		Southeast	0.95 feet

Stock No. 26273

T 40 N R 12 E, SECTION 4

7. Property Corner #5, Section 4

Corner is monumented by a 2"x36" aluminum pipe with a 3" aluminum tablet that replaces a 2" I.P. set by Tuttle. This is the Southwest corner of the East 20 acres of Government Lot 1.

Corner References:

Sugar Maple	38"	S58°W	15.90 feet
Sugar Maple	5"	N51½°W	7.55 feet
Sugar Maple	6"	N35½°E	17.77 feet
Steel Sign Post		Southeast	1.00 feet

8. Property Corner#6, Section 4

Corner is monumented by a 2"x36" aluminum pipe with a 3" aluminum tablet that replaces a 2" I.P. set by Tuttle. This is the Northwest corner of the East 20 acres of Government Lot 1.

Corner References:

Sugar Maple	16"	N80°E	14.77 feet
Sugar Maple	11"	S46°E	10.95 feet
Sugar Maple	6"	N50°W	3.89 feet
Steel Sign Post		Southeast	1.65 feet

CORNERS ESTABLISHED1. North-East 1/16 Corner, Section 4

Corner is monumented by a 2"x36" aluminum pipe with a 3" aluminum tablet. The corner is on line and at the midpoint between the Center North 1/16 corner and the North 1/16 corner location.

Corner References:

Sugar Maple	8"	S1°W	10.65 feet
Sugar Maple	9"	N43°W	3.81 feet
Erroneous I.P.	1½"	N0°E	2.99 feet

Stock No. 26273

T 40 N R 12 E, SECTION 4

SURVEYOR'S AFFIDAVIT

State of Wisconsin))
 County of Forest) ss

I, Robert H. Winat, Land Surveyor, Registered in the State of Wisconsin, hereby certify: That I have surveyed and subdivided Section 4, T40N, R12E, Fourth Principal Meridian, County of Forest, State of Wisconsin, in accordance with the rules of the survey of the public lands and with the statutes of the State of Wisconsin. The plat map and survey notes are an accurate representation of the corners recovered and established.



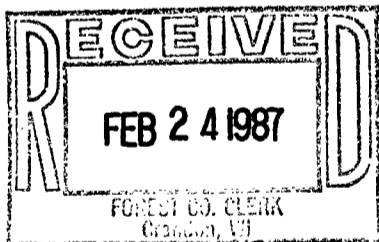
Robert H. Winat
 Registered Land Surveyor,
 State of Wisconsin

Certificate No. S-1040

Date of Survey: January-April 1985

Plat ready for filing:

N. Frank Hawley
 District Ranger



Dora C. James
 Forest Co. Clerk