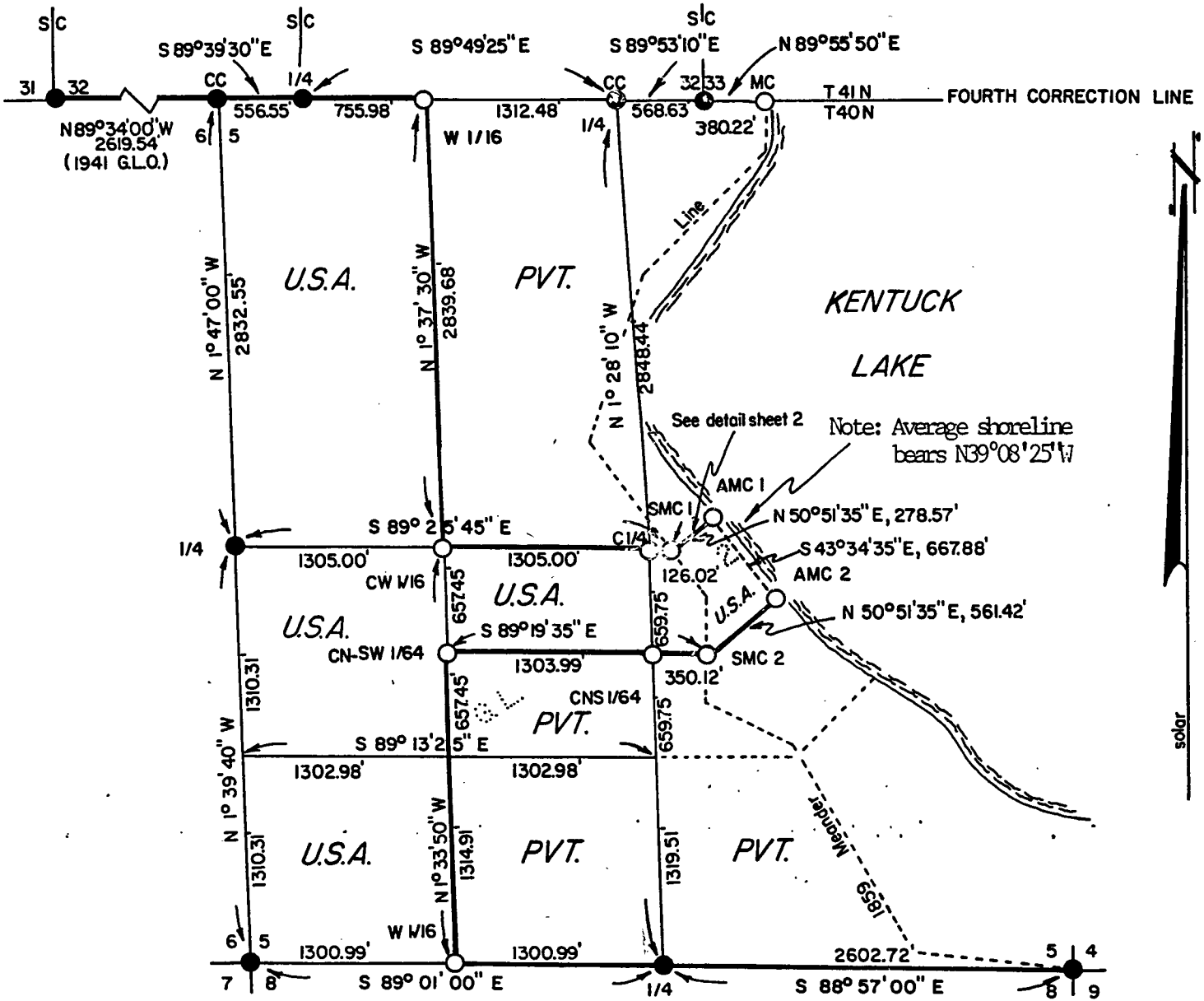


Stock No. 26273

PLAT OF SURVEY U.S. GOVERNMENT LAND

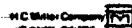
BEING THE W 1/2 OF THE NW 1/4, THE W 1/2 OF THE SW 1/4, THE N 1/2 OF THE NE 1/4 OF THE SW 1/4 & THE N 1/2 OF GOVERNMENT LOT 2, SECTION 5, TOWNSHIP 40 NORTH, RANGE 12 EAST, FOURTH PRINCIPAL MERIDIAN, FOREST COUNTY, WISCONSIN.



LEGEND

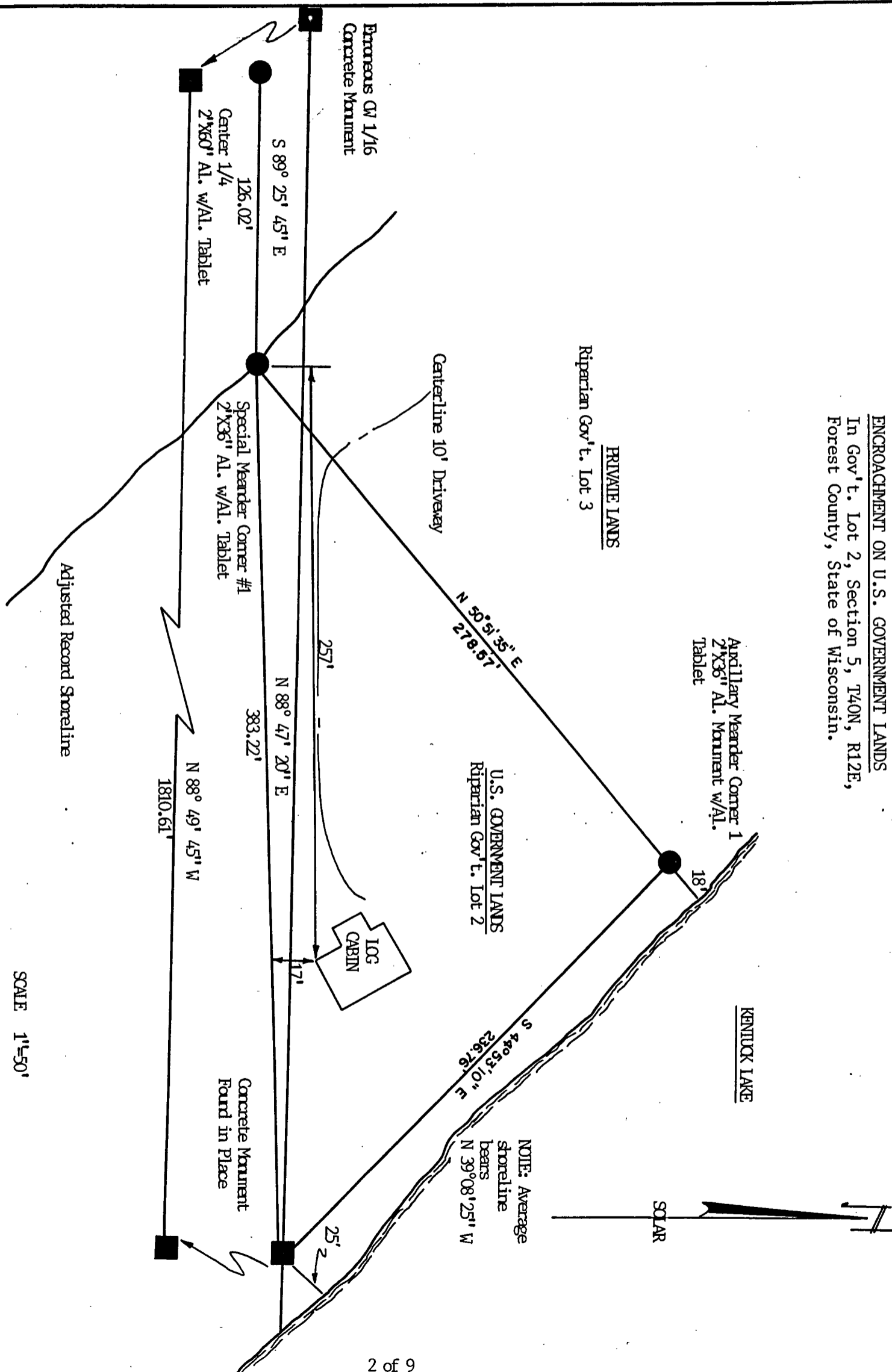
- Recovered G.L.O. Monument w/Brass Cap.
- 2" aluminum pipe w/3" aluminum tablet stamped to identify corner.
- CC Closing — Corner.
- SC Standard Corner.
- Boundary U.S. Government Land, marked and posted to U.S.F.S. standards.

FOREST CO SURVEYOR
 FILE # 401205-19850000
 DATE _____ BY _____



Stock No. 26273

ENCROACHMENT ON U.S. GOVERNMENT LANDS
In Gov't. Lot 2, Section 5, T40N, R12E,
Forest County, State of Wisconsin.



SCALE 1"=50'

Stock No. 26273

T 40 N R 12 E, SECTION 5

SURVEY NOTES

This survey was made by North Country Surveyors pursuant to United States Department of Agriculture, Forest Service Contract "No. 53-56A6-4-00035, Cadastral Survey" for the purpose of recovering, restoring, establishing, marking and perpetuating the corners and boundary lines of the U.S. Government land on the perimeter and within Section 5, T40N, R12E, Fourth Principal Meridian, Forest County, Wisconsin as shown on the plat herewith.

This township was resurveyed by the General Land Office in 1941.

Bearings between corner positions are true bearings by reference to a solar observation. All distances shown thereon are in feet and hundredths of feet. The control traverse was measured by use of electronic distance measuring equipment to an accuracy of one part in 20,000. Corners recovered, restored and established by this survey are marked by the monument described in the map legend. Each monumented corner position is referenced to blazed and scribed bearing trees and described reference objects.

CORNERS RECOVERED1. Corner to Sections 5-6-32 (on correction line)

Corner is monumented by a G.L.O. brass cap.

Corner References:			
Yellow Birch	9"	S63°E	8.57 feet
Hemlock	18"	S20°W	67.19 feet
Hemlock	18"	S2½°E	75.30 feet
Maple	8"	N87°E	29.70 feet
Steel Sign Post		South	0.50 feet

2. Corner to Sections 6-31-32 (on correction line)

Corner is monumented by a G.L.O. brass cap.

Corner References:			
Sugar Maple	10"	S15°W	15.98 feet
Sugar Maple	8"	N45°W	20.18 feet
Sugar Maple	7"	N45°E	38.95 feet
Sugar Maple	10"	S70°E	32.60 feet
Steel Sign Post		S47°W	0.70 feet

Stock No. 26273

T 40 N R 12 E, SECTION 5

3. Quarter Corner to Sections 5-32 (on correction line)

Corner is monumented by a G.L.O. brass cap. This is the N $\frac{1}{2}$ of 5-40-12.

Corner References:

Ash	9"	S64°W	33.90 feet
Sugar Maple	14"	S88°30'E	82.26 feet
Sugar Maple	10"	N38°30'E	69.04 feet
Sugar Maple	8"	N45°W	15.19 feet
Steel Sign Post		South	0.40 feet

4. Corner to Sections 32-33-5 (on correction line)

Corner is monumented by a G.L.O. brass cap.

Corner References:

Cherry	10"	N62°E	34.70 feet
Sugar Maple	17"	N41°W	19.88 feet
Sugar Maple	8"	S65°E	27.36 feet
Ash	7"	S45 $\frac{1}{2}$ °W	13.60 feet
Steel Sign Post		East	1.50 feet

5. Meander Corner to Sections 33-5 (on correction line)

Corner was monumented by a 1" iron pipe which has been replaced by a 2"x36" aluminum monument with a 3" aluminum tablet stamped to identify corner.

Corner References:

White Birch	8"	S42°W	9.10 feet
Sugar Maple	13"	S20°E	4.15 feet
Sugar Maple	7"	S50°W	16.72 feet
32/33 Standard Corner		S89°55'50"W	380.22 feet
Steel Sign Post		East	2.00 feet

6. Quarter Corner to Sections 5-6

Corner is monumented by a G.L.O. brass cap.

Corner References:

Spruce	15"	S21°E	105.52 feet
Ash	10"	S7°30'E	64.44 feet
Ash	14"	S41°W	63.89 feet
Maple	16"	N4°E	45.69 feet
Steel Sign Post		East	2.00 feet

Stock No. 26273

T 40 N R 12 E, SECTION 5

7. Corner to Sections 5-6-7-8

Corner is monumented by a G.L.O. brass cap.

Corner References:

Maple	20"	N84°E	40.75 feet
Ironwood	7"	S43°E	8.88 feet
Maple	16"	S81°W	43.86 feet
Maple	16"	N81°W	52.98 feet
Steel Sign Post		N25°W	1.10 feet

8. Quarter Corner to Sections 5-8

Corner is monumented by a G.L.O. brass cap.

Corner References:

Poplar	10"	N33°E	44.20 feet
Sugar Maple	5"	S45°E	46.68 feet
Sugar Maple	6"	S44°30'W	28.24 feet
Spruce	11"	N64°W	87.35 feet
Wood Sign Post		S2°E	1.20 feet

9. Corner to Sections 4-5-8-9

Corner is monumented by a G.L.O. brass cap.

Corner References:

Sugar Maple	12"	N28½°E	81.62 feet
Sugar Maple	12"	S45°E	33.10 feet
Sugar Maple	14"	N46°W	48.79 feet
White Birch	14"	S60°W	76.57 feet
Wood Sign Post		South	4.70 feet

10. Quarter Corner to Sections 32-5 (on correction line)

Corner is monumented by a G.L.O. brass cap. This is the S¼ of 32-41-12.

Corner References:

6"x6" concrete adjacent to north			
Maple	7"	S85°E	36.71 feet
Yellow Birch	8"	N15°E	81.06 feet
Steel Sign Post		South	0.40 feet

Stock No. 26273

T 40 N R 12 E, SECTION 5

CORNERS ESTABLISHED1. West 1/16 to Sections 5-8

Corner is monumented by a 2"x36" aluminum pipe with a 3" aluminum tablet stamped to identify corner. The corner is set at the midpoint and on line between the Corner to Sections 5-6-7-8 and the Quarter Corner to Sections 5 & 8.

Corner References:

Sugar Maple	5"	S85°W	27.24 feet
Sugar Maple	9"	S39°E	19.81 feet
Sugar Maple	7"	N47°E	48.32 feet
Steel Sign Post		N21°E	1.19 feet

2. Center-West 1/16 Corner, Section 5

Corner is monumented by a 2"x36" aluminum pipe with a 3" aluminum tablet stamped to identify corner. The corner is set on line and at the midpoint between the Quarter Corner to Sections 5 & 6 and the Center 1/4 Corner of Section 5.

Corner References:

Sugar Maple	10"	S42°W	30.82 feet
Red Maple	7"	S2°E	35.05 feet
6"x6" concrete		N7°E	31.10 feet
Steel Sign Post		East	1.50 feet

3. West 1/16 Corner to Sections 32-5 (on correction line)

Corner is monumented by a 2"x36" aluminum pipe with a 3" aluminum tablet stamped to identify corner. The corner is set on line and at the midpoint between the Corner to Sections 5-6-32 and the Quarter Corner to Sections 5-32.

Corner References:

Sugar Maple	8"	S47°E	29.54 feet
Sugar Maple (twin)	5"	S58°W	28.42 feet
6"x6" concrete		S89°E	24.65 feet
Steel Sign Post		West	1.20 feet

Stock No. 26273

4. Center-North-South-West 1/64 Corner

Corner is monumented by a 2"x36" aluminum pipe with a 3" aluminum tablet stamped to identify corner. The corner is set on line and at the midpoint between the Center-West 1/16 corner and the calculated location of the South-West 1/16 corner.

Corner References:

Sugar Maple	6"	N17°E	26.10 feet
Sugar Maple	9"	N71°W	29.00 feet
2" sq. wood (cedar) hub		S21°E	8.53 feet
Steel Sign Post		East	1.30 feet

5. Center-North-South 1/64 Corner

Corner is monumented by a 2"x36" aluminum pipe with a 3" aluminum tablet stamped to identify corner. The corner is set on line and at the midpoint between the Center 1/4 corner and the calculated location of the Center-South 1/16 corner.

Corner References:

Balsam Fir	4"	N86°W	34.21 feet
Sugar Maple	6"	N18°E	18.52 feet
Steel Sign Post		West	2.00 feet

6. Center Quarter Corner

Corner is monumented by a 2"x60" aluminum pipe with a 3" aluminum tablet stamped to identify corner. The corner is set at the intersection of the North-South 1/4 line and the East-West 1/4 line.

Corner References:

Ash	6"	N85°W	36.86 feet
White Birch	13"	S20°E	33.34 feet
Sugar Maple	7"	S50°E	46.55 feet
Steel Sign Post		SouthWest	2.00 feet

Stock No. 26273

T 40 N R 12 E, SECTION 5

7. Special Meander Corner #1, Section 5

Corner is monumented by a 2"x36" aluminum pipe with a 3" aluminum tablet stamped to identify corner. The corner is set at the intersection of the East-West 1/4 line and the West shore of Kentuck Lake, as shown on the original 1859 Meander line.

Corner References:

Sugar Maple	7"	S44°W	31.68 feet
Sugar Maple	11"	N60°W	14.54 feet
Sugar Maple	8"	S13°E	31.34 feet

Steel Sign Post		Southeast	1.00 feet
-----------------	--	-----------	-----------

8. Special Meander Corner #2

Corner is monumented by a 2"x36" aluminum pipe with a 3" aluminum tablet stamped to identify corner. The corner is set at the intersection of the Center-North-South 1/64 line and the West Shore of Kentuck Lake, as shown on the original 1859 Meander line.

Corner References:

Spruce	6"	N70°E	16.35 feet
Tamarack	11"	S21°E	31.03 feet
Tamarack	8"	S25°W	23.55 feet

Steel Sign Post		Northeast	2.50 feet
-----------------	--	-----------	-----------

9. Auxillary Meander Corner #1, Section 5

Corner is monumented by a 2"x36" aluminum pipe with a 3" aluminum tablet stamped to identify corner. The corner is set from the S.M.C. #1 at a bearing at the normal to the general direction of the actual shoreline and at the intersection of the West shore of Kentuck Lake.

Corner References:

Hemlock	17"	S71°E	19.47 feet
Red Maple	8"	S11°E	28.04 feet
Spruce	8"	S51°W	12.72 feet

Steel Sign Post		Northeast	1.50 feet
-----------------	--	-----------	-----------

Stock No. 26273

T 40 N R. 12 E, SECTION 5

10. Auxillary Meander Corner #2, Section 5

Corner is momumented by a 2"x36" aluminum pipe with a 3" aluminum tablet stamped to identify corner. The corner is set from the S.M.C. #2 at a bearing at the normal to the general direction of the actual shoreline and at the intersection of the West shore of Kentuck Lake.

Corner References:

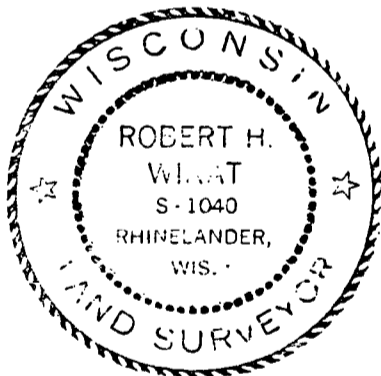
White Birch	7"	N5°W	7.45 feet
Sugar Maple	5"	S74°W	17.23 feet

Steel Sign Post	Northeast	1.00 feet
-----------------	-----------	-----------

SURVEYOR'S AFFIDAVIT

State of Wisconsin))
County of Forest) ss

I, Robert H. Winat, Land Surveyor, Registered in the State of Wisconsin, hereby certify: That I have surveyed and subdivided Section 5, T40N, R12E, Fourth Principal Meridian, County of Forest, State of Wisconsin, in accordance with the rules of the survey of public lands and with the statutes of the State of Wisconsin. The plat map and survey notes are an accurate representation of the corners recovered and established.



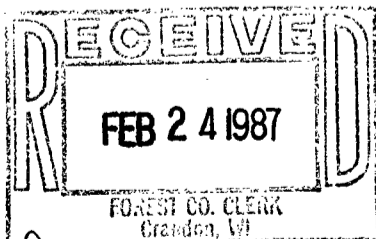
Robert H. Winat
Registered Land Surveyor,
State of Wisconsin

Certificate No. S-1040

Date of Survey: January-April 1985

Plat ready for filing:

D. Frank Hubrey
District Ranger



Dora C. James
Forest Co. Clerk