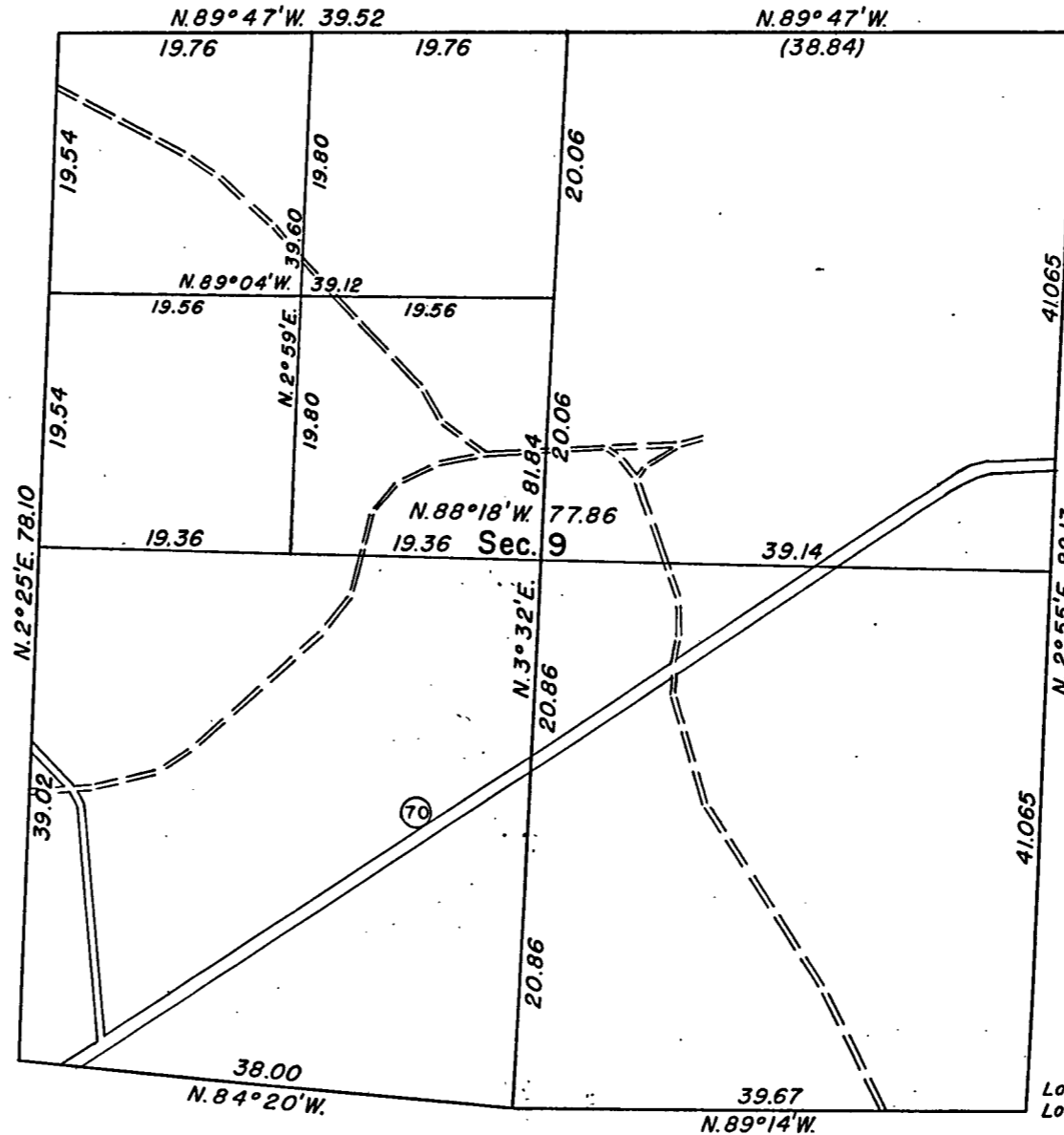


TOWNSHIP 40 NORTH, RANGE 12 EAST, FOURTH PRINCIPAL MERIDIAN, WISCONSIN.
PARTIAL SUBDIVISION OF SEC. 9.

FOREST CO SURVEYOR
FILE # 401209-1955/021
DATE _____ BY _____



Memorandum

This plat of a partial subdivision delineates a retracement of the dependent half of the ^{1/2} sec. 8 and 9, the west 4 and 9, as shown upon the resurvey of 8, 1943, a survey of the N.-S. and E.-section, of the north half of the W. 1- of the N. 1-16 line of the section.

The partial subdivision was made in accordance with the standard rules of the Bureau of Land Management in order to define the boundaries of the partial subdivision of sec. 9.

Denver, Colorado, October 21, 1955.

Hugh B. C.

Latitude $45^{\circ} 57' 14'' N.$
Longitude $88^{\circ} 59' 24'' W.$

