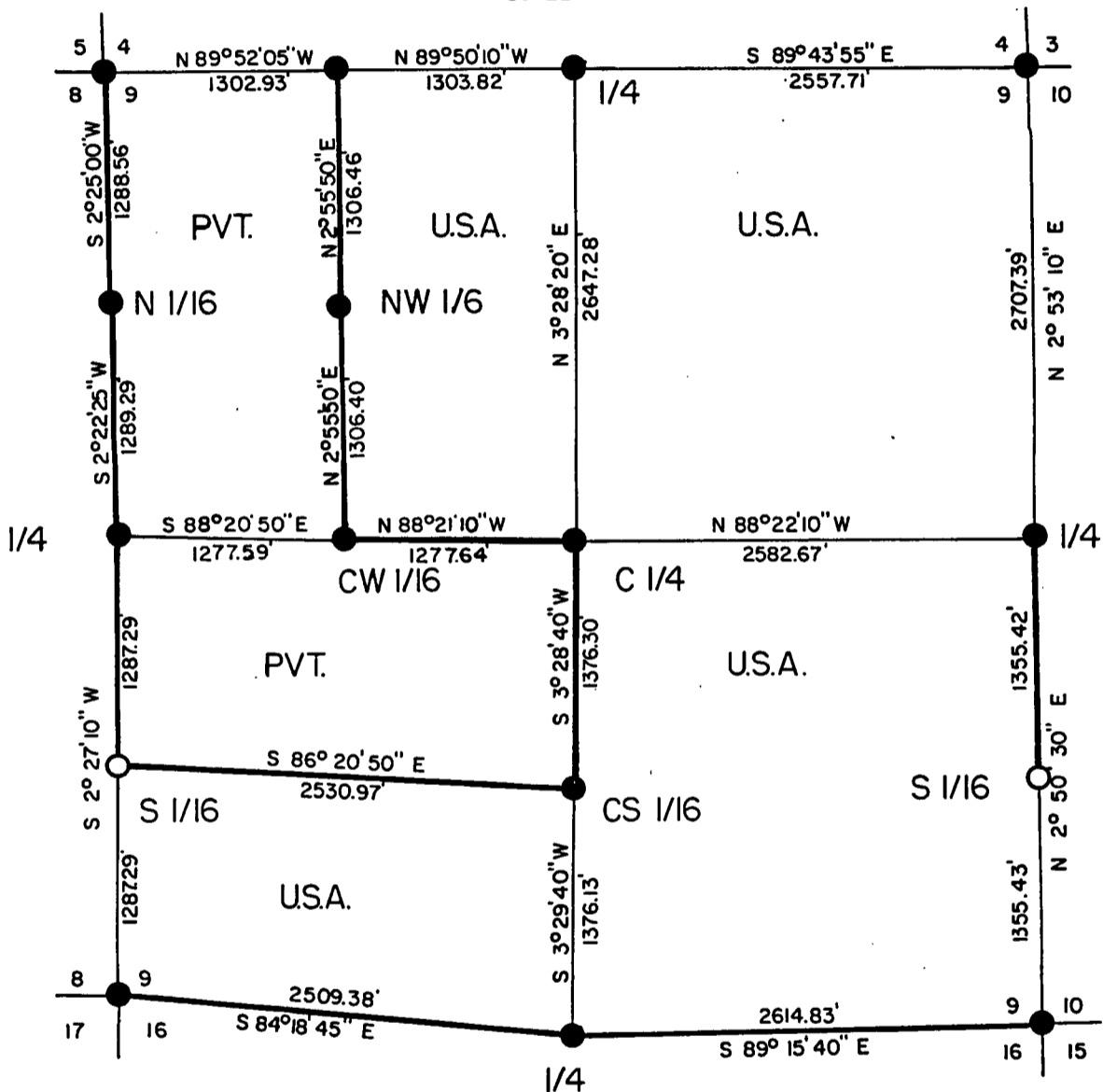
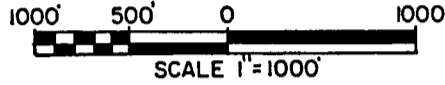


PLAT OF SURVEY U.S. GOVERNMENT LAND

BEING THE E 1/2 OF THE NW 1/4, THE NE 1/4, THE SE 1/4, & THE
S 1/2 OF THE SW 1/4, SECTION 9, TOWNSHIP 40 NORTH, RANGE 12
EAST, FOURTH PRINCIPAL MERIDIAN, FOREST COUNTY, WISCONSIN.



LEGEND

- = Recovered G.L.O. Monument w/brass cap.
- = 2"X36" aluminum pipe w/3" aluminum tablet stamped to identify corner.
- Boundary U.S. Government Land, marked and posted to U.S.F.S. standards.

FOREST CO SURVEYOR
 FILE # 401209-19850000
 DATE _____ BY _____

Stock No. 26273

T 40 N R 12 E, SECTION 9

SURVEY NOTES

This survey was made by North Country Surveyor's pursuant to United States Department of Agriculture, Forest Service Contract "No. 53-56A6-4-00035, Cadastral Survey" for the purpose of recovering, restoring, establishing, marking and perpetuating the corners and boundary lines of the U.S. Government land on the perimeter and within Section 9, T40N, R12E, Fourth Principal Meridian, Forest County, Wisconsin as shown on the plat herewith.

This township was resurveyed by the General Land Office in 1941.

Bearings between corner positions are true bearings by reference to a solar observation. All distances shown thereon are in feet and hundredths of feet. The control traverse was measured by use of electronic distance measuring equipment to an accuracy of one part in 20,000. Corners recovered, restored and established by this survey are marked by the monument described in the map legend. Each monumented corner position is referenced to blazed and scribed bearing trees and described reference objects.

CORNERS RECOVERED1. Quarter Corner to Sections 4-9

Corner is monumented by a 1941 G.L.O. brass cap.

Corner References:

Maple	8"	N21°E	28.42 feet
Maple	14"	S70°E	34.50 feet
Maple	9"	N76°E	10.17 feet
Maple	10"	S22°E	18.30 feet

Sign Post		South	0.80 feet
-----------	--	-------	-----------

2. Corner to Sections 3-4-9-10

Corner is monumented by a 1941 G.L.O. brass cap.

Corner References:

Sugar Maple	8"	N60°W	28.29 feet
Sugar Maple	6"	S47°30'E	37.75 feet
White Birch	10"	S37°30'W	34.83 feet
White Birch	10"	N35°30'W	35.35 feet

Sign Post		S30°W	1.00 feet
-----------	--	-------	-----------

Stock No. 26273

T 40 N R 12 E, SECTION 9

3. Quarter Corner to Sections 9-16

Corner is monumented by a G.L.O. brass cap. No accessories are available as corner is in open swamp and no suitable trees exist within 800 feet.

4. Corner to Sections 8-9-16-17

Corner is monumented by a G.L.O. brass cap.

Corner References:

White Pine	9"	S19°W	11.17 feet
White Pine	6"	N6°W	33.80 feet
White Pine	8"	S81°W	23.05 feet
Poplar	12"	N72°E	11.90 feet
Wood Sign Post		N47°W	1.15 feet

5. Quarter Corner to Sections 8-9

Corner is monumented by a G.L.O. brass cap.

Corner References:

Red Maple	5"	S13°E	19.13 feet
Sugar Maple	5"	S77°E	16.37 feet
Sugar Maple	6"	N54°W	20.22 feet
Red Maple	7"	S78°W	26.81 feet
Wood Sign Post		West	1.30 feet

6. North 1/16 Corner to Sections 8-9

Corner is monumented by a brass cap.

Corner References:

Maple	17"	N34°W	29.15 feet
Maple	25"	N55°E	62.17 feet
Pine	7"	S39°W	32.44 feet
Wood Sign Post		S70°W	1.47 feet

Stock No. 26273

T 40 N R 12 E, SECTION 9

7. West 1/16 Corner to Sections 4-9

Corner is monumented by a brass cap.

Corner References:

Maple	12"	S53°E	17.50 feet
Maple	16"	N12°30'W	29.43 feet
Maple	18"	S24°30'E	11.90 feet
Wood Sign Post		S60°E	1.14 feet

8. North-West 1/16 Corner

Corner is monumented by a brass cap.

Corner References:

Yellow Birch	10"	S55°W	13.44 feet
Hemlock	14"	N35°W	25.51 feet
Maple	6"	N53°E	40.75 feet
Wood Sign Post		N55°E	1.40 feet

9. Center-West 1/16 Corner

Corner is monumented by a brass cap.

Corner References:

White Birch	18"	N72°W	33.47 feet
White Birch	12"	S12°W	19.10 feet
Balsam	8"	N13°W	30.66 feet
Wood Sign Post		N47°E	1.35 feet

10. Center-South 1/16 Corner

Corner is monumented by a brass cap.

Corner References:

Sugar Maple	4"	S66°W	7.40 feet
Sugar Maple	7"	S59°E	27.83 feet
Red Maple	8"	N1°W	27.26 feet
Wood Sign Post		S45°E	1.50 feet

Stock No. 26273

T 40 N R 12 E, SECTION 9

11. Center Quarter Corner

Corner is monumented by a brass cap.

Corner References:

Red Maple	11"	N30°W	10.27 feet
Red Maple	9"	S60°E	2.90 feet
Yellow Birch	12"	S15°W	45.90 feet
Sugar Maple	16"	N86°E	71.50 feet
Wood Sign Post		North	1.50 feet

12. Corner to Sections 9-10-15-16

Corner is monumented by a G.L.O. brass cap.

Corner References:

Maple	10"	S33°W	34.41 feet
Maple	19"	N60°E	15.40 feet
Maple	15"	S63°30'E	33.94 feet
Maple	10"	N46°W	22.55 feet
Wood Sign Post		N71°E	1.40 feet

13. Quarter Corner to Sections 9-10

Corner is monumented by a G.L.O. brass cap.

Corner References:

Maple	9"	S20°W	18.60 feet
Maple Snag	14"	S51°W	43.44 feet
Maple	8"	N84°W	6.15 feet
Maple	5"	N34°W	41.45 feet
Wood Sign Post		S51°W	0.80 feet

Stock No. 26273

T 40 N R 12 E, SECTION 9

14. Corner to Sections 4-5-8-9

Corner is monumented by a 1941 G.L.O. brass cap.

Corner References:

Sugar Maple	12"	N28°30'E	81.62 feet
Sugar Maple	12"	S45°E	33.10 feet
Sugar Maple	14"	N46°W	48.79 feet
White Birch	14"	S60°W	76.57 feet
Sign Post		South	4.70 feet

CORNERS ESTABLISHED1. South 1/16 Corner to Sections 8-9

Corner is monumented by a 2"x36" aluminum pipe with a 3" aluminum tablet stamped to identify corner. The corner is set at the midpoint and on line between the Quarter Corner to Sections 8 & 9 and the Section Corner to 8-9-16-17.

Corner References:

Balsam	6"	S61°W	2.42 feet
Sugar Maple	7"	N59°E	9.69 feet
Sugar Maple	5"	S53°E	27.90 feet
Steel Sign Post		S45°W	1.25 feet

2. South 1/16 Corner to Sections 9-10

Corner is monumented by a 2"x36" aluminum pipe with a 3" aluminum tablet stamped to identify corner. The corner is set at the midpoint and on line between the Quarter Corner to Sections 9 & 10 and the Corner to Sections 9-10-16-15.

Corner References:

Sugar Maple	8"	N22°W	19.14 feet
Sugar Maple	5"	S45°E	21.62 feet
Sugar Maple	13"	S58°W	40.28 feet
Well Point		N81°34'35"W	10.75 feet
Steel Sign Post		S83°W	1.86 feet

Stock No. 26273

T 40 N R 12 E, SECTION 9

SURVEYOR'S AFFIDAVIT

State of Wisconsin)
County of Forest) ss

I, Robert H. Winat, Land Surveyor, Registered in the State of Wisconsin, hereby certify: That I have surveyed and subdivided Section 9, T40N, R12E, Fourth Principal Meridian, County of Forest, State of Wisconsin, in accordance with the rules of the survey of the public lands and with the statutes of the State of Wisconsin. The plat map and survey notes are an accurate representation of the corners recovered and established.

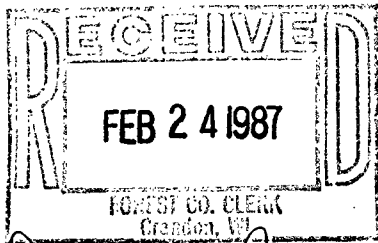


Robert H. Winat
Registered Land Surveyor,
State of Wisconsin

Certificate No. S-1040

Date of Survey: January-March 1985

Plat ready for filing: *N. Frank Hulby*
District Ranger



Dora C. James
Forest Co. Clerk