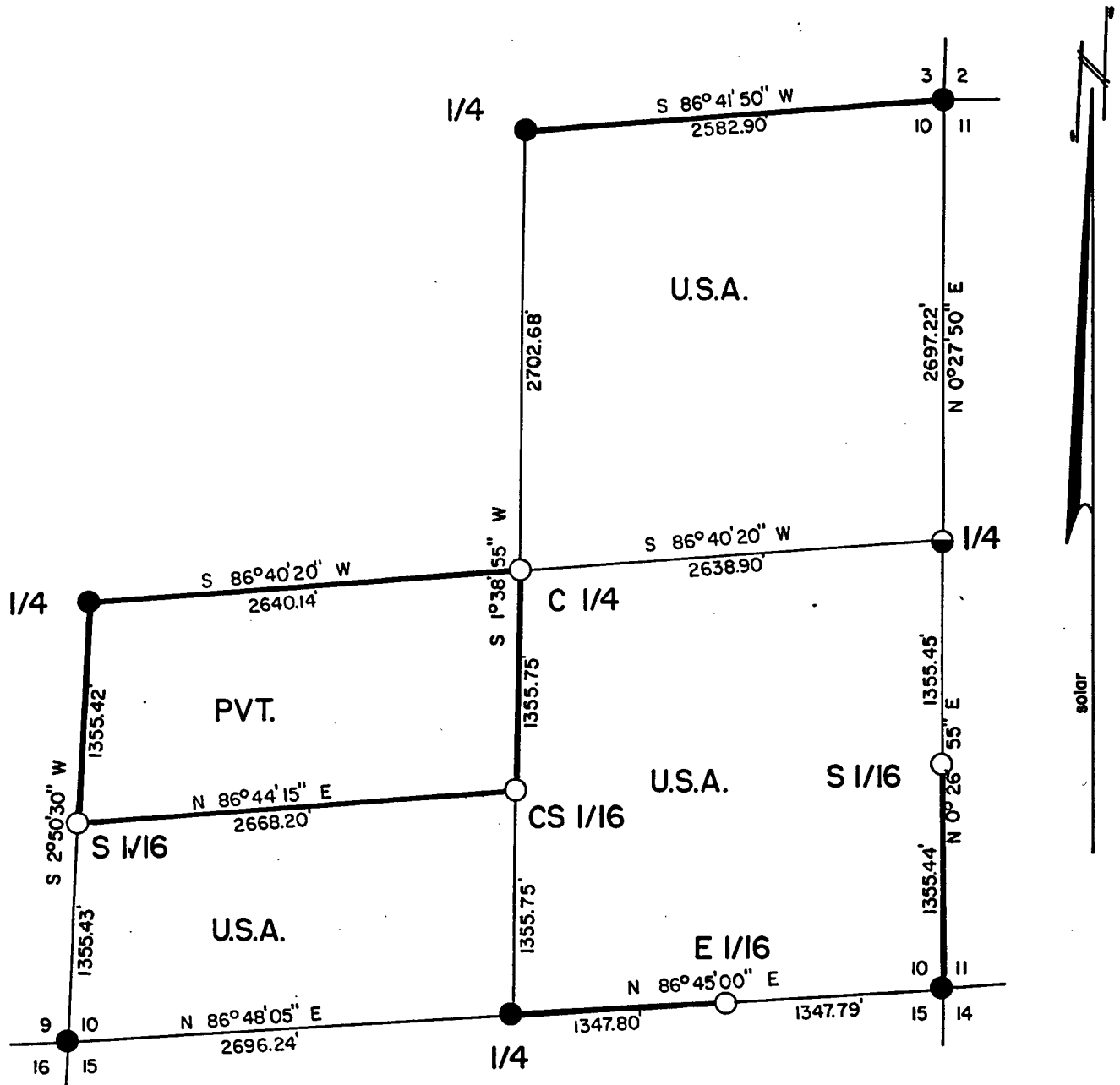
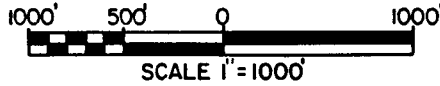


PLAT OF SURVEY U.S. GOVERNMENT LAND

BEING THE NW 1/4, THE NE 1/4, THE SE 1/4, & THE N 1/2 OF THE
SW 1/4, SECTION 10, TOWNSHIP 40 NORTH, RANGE 12 EAST, FOUR-
TH PRINCIPAL MERIDIAN, FOREST COUNTY, STATE OF WISCONSIN.



LEGEND

- : Recovered 1941 G.L.O. Monument w/Brass Cap.
- : 2'x36" Aluminum pipe w/3" aluminum tablet stamped to identify corner.
- : 2'x36" Aluminum pipe w/3" aluminum tablet stamped to identify corner (buried).
- : Boundary U.S. Government Land, marked and posted to U.S.F.S. standards.

FOREST CO SURVEYOR
 FILE # 401210-19850000
 DATE _____ BY _____

Stock No. 26273

T 40 N R 12 E, SECTION 10

SURVEY NOTES

This survey was made by North Country Surveyor's pursuant to United States Department of Agriculture, Forest Service Contract "No. 53-56A6-4-00035, Cadastral Survey" for the purpose of recovering, restoring, establishing, marking and perpetuating the corners and boundary lines of the U.S. Government land on the perimeter and within Section 10, T40N, R12E, Fourth Principal Meridian, Forest County, Wisconsin as shown on the plat herewith.

This township was resurveyed by the General Land Office in 1941.

Bearings between corner positions are true bearings by reference to a solar observation. All distances shown thereon are in feet and hundredths of feet. The control traverse was measured by use of electronic distance measuring equipment to an accuracy of one part in 20,000. Corners recovered, restored and established by this survey are marked by the monument described in the map legend. Each monumented corner position is referenced to blazed and scribed bearing trees and described reference objects.

CORNERS RECOVERED1. Corner to Sections 2-3-10-11

Corner is monumented by a G.L.O. brass cap.

Corner References:

Spruce	10"	S60°E	56.52 feet
Balsam	12"	S20°W	28.80 feet
Balsam	10"	N75°W	37.30 feet
Spruce	11"	N10°W	55.18 feet
Sign Post		N83°E	1.29 feet

2. Corner to Sections 10-11-14-15

Corner is monumented by a G.L.O. brass cap.

Corner References:

Yellow Birch	36"	S30°W	3.85 feet
Henlock	16"	S05°W	26.66 feet
Maple	4"	S70°E	10.68 feet
Maple	8"	N12°E	34.16 feet
Hemlock	20"	N47°W	10.53 feet
Sign Post		S44°E	2.10 feet

Stock No. 26273

T 40 N R 12 E, SECTION 10

3. Corner to Sections 9-10-15-16

Corner is monumented by a G.L.O. brass cap.

Corner References:

Maple	10"	S33°W	34.41 feet
Maple	19"	N60°E	15.40 feet
Maple	15"	S63°30'E	33.94 feet
Maple	10"	N46°W	22.55 feet
Sign Post		N71°E	1.40 feet

4. Quarter Corner to Sections 9-10

Corner is monumented by a G.L.O. brass cap.

Corner References:

Maple	9"	S20°W	18.60 feet
Maple (snag)	14"	S51°W	43.44 feet
Maple	8"	N84°W	6.15 feet
Maple	5"	N34°W	41.45 feet
Sign Post		S51°W	0.80 feet

5. Quarter Corner to Sections 3-10

Corner is monumented by a G.L.O. brass cap.

Corner References:

Maple	24"	S81°E	23.91 feet
Hemlock	24"	N83°30'W	39.49 feet
Hemlock	10"	S46°W	18.08 feet
Hemlock	19'	N21°E	17.21 feet
Sign Post		S80°W	1.00 feet

6. Quarter Corner to Sections 10-15

Corner is monumented by a G.L.O. brass cap.

Corner References:

Yellow Birch	11"	N54°30'E	54.13 feet
Maple	15"	N43°30'W	29.41 feet
Hemlock	16"	S84°W	40.40 feet
Hemlock	10"	S27°30'W	32.43 feet
Sign Post		N7°W	1.00 feet

Stock No. 26273

T 40 N R 12 E, SECTION 10

CORNERS ESTABLISHED1. South 1/16 Corner to Sections 9-10

Corner is monumented by a 2"x36" aluminum pipe with a 3" aluminum tablet stamped to identify corner. The corner is set at the midpoint and on line between the 1/4 Corner to Sections 9 & 10 and the Corner to Sections 9-10-16-15.

Corner References:

Sugar Maple	8"	N22°W	19.14 feet
Sugar Maple	5"	S45°E	21.62 feet
Sugar Maple	13"	S58°W	40.28 feet
Well Point		N81°34'35"W	10.75 feet
Steel Sign Post		S83°W	1.86 feet

2. South 1/16 Corner to Sections 10-11

Corner is monumented by a 2"x36" aluminum pipe with a 3" aluminum tablet stamped to identify corner. The corner is set at the midpoint and on line between the 1/4 Corner to Sections 10 & 11 and the Corner to Sections 10-11-14-15.

Corner References:

Sugar Maple	18"	S11°E	12.10 feet
Sugar Maple	15"	N63°E	33.64 feet
Sugar Maple	8"	S61°30'W	15.92 feet
Steel Sign Post		N 7° W	1.51 feet

3. East 1/16 Corner to Sections 10-15

Corner is monumented by a 2"x36" aluminum pipe with a 3" aluminum tablet stamped to identify corner. The corner is set at the midpoint and on line between the 1/4 Corner to Sections 10 & 15 and the Corner to Sections 10-11-14-15.

Corner References:

Sugar Maple	7"	S03°W	36.28 feet
Sugar Maple	8"	N51°E	20.82 feet
Sugar Maple	11"	N35°30'W	20.91 feet
Steel Sign Post		N20°W	0.65 feet

Stock No. 26273

T 40 N R 12 E, SECTION 10

4. Center-South 1/16 Corner to Section 10

Corner is monumented by a 2"x36" aluminum pipe with a 3" aluminum tablet stamped to identify corner. The corner is set at the midpoint and on line between the 1/4 Corner and the 1/4 Corner to Sections 10 & 15.

Corner References:

Sugar Maple	20"	S47°E	36.48 feet
Sugar Maple	10"	N60°W	27.87 feet
Iron Pipe		S75°19'50"E	17.80 feet

Steel Sign Post		S50°W	1.39 feet
-----------------	--	-------	-----------

5. Center Quarter Corner to Section 10

Corner is monumented by a 2"x36" aluminum pipe with a 3" aluminum tablet stamped to identify corner. The corner is set at the intersection of the North-South 1/4 line and the East-West 1/4 line.

Corner References:

White Spruce	16"	S22°W	29.09 feet
Sugar Maple	15"	N20°W	75.44 feet

Steel Sign Post		N41°E	1.21 feet
-----------------	--	-------	-----------

6. Quarter Corner to Sections 10-11

Corner is monumented by a 2"x36" aluminum pipe with a 3" aluminum tablet stamped to identify corner, buried in the East shoulder of Divide Road. The corner was set using existing BT's.

Corner References:

Hemlock	20"	N59°57'50"E	110.89 feet
Sugar Maple	22"	N64°05'00"E	47.11 feet
Hemlock	18"	S52°06'55"E	118.79 feet
Sugar Maple	16"	S62°30'00"W	91.15 feet

Steel Sign Post		S86°E	2.50 feet
-----------------	--	-------	-----------

Stock No. 26273

T 40 N R 12 E, SECTION 10

SURVEYOR'S AFFIDAVIT

State of Wisconsin) ss
County of Forest)

I, Robert H. Winat, Land Surveyor, Registered in the State of Wisconsin, hereby certify: That I have surveyed and subdivided Section 10, T40N, R12E, Fourth Principal Meridian, County of Forest, State of Wisconsin, in accordance with the rules of the survey of the public lands and with the statutes of the State of Wisconsin. The plat map and survey notes are an accurate representation of the corners recovered and established.

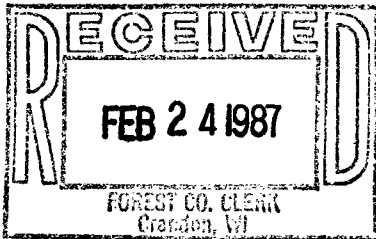


Robert H. Winat
Registered Land Surveyor,
State of Wisconsin

Certificate No. S-1040

Date of Survey: January-March 1985

Plat ready for filing: *N. Frank Haubry*
District Ranger



Dora C. James
Forest Co. Clerk