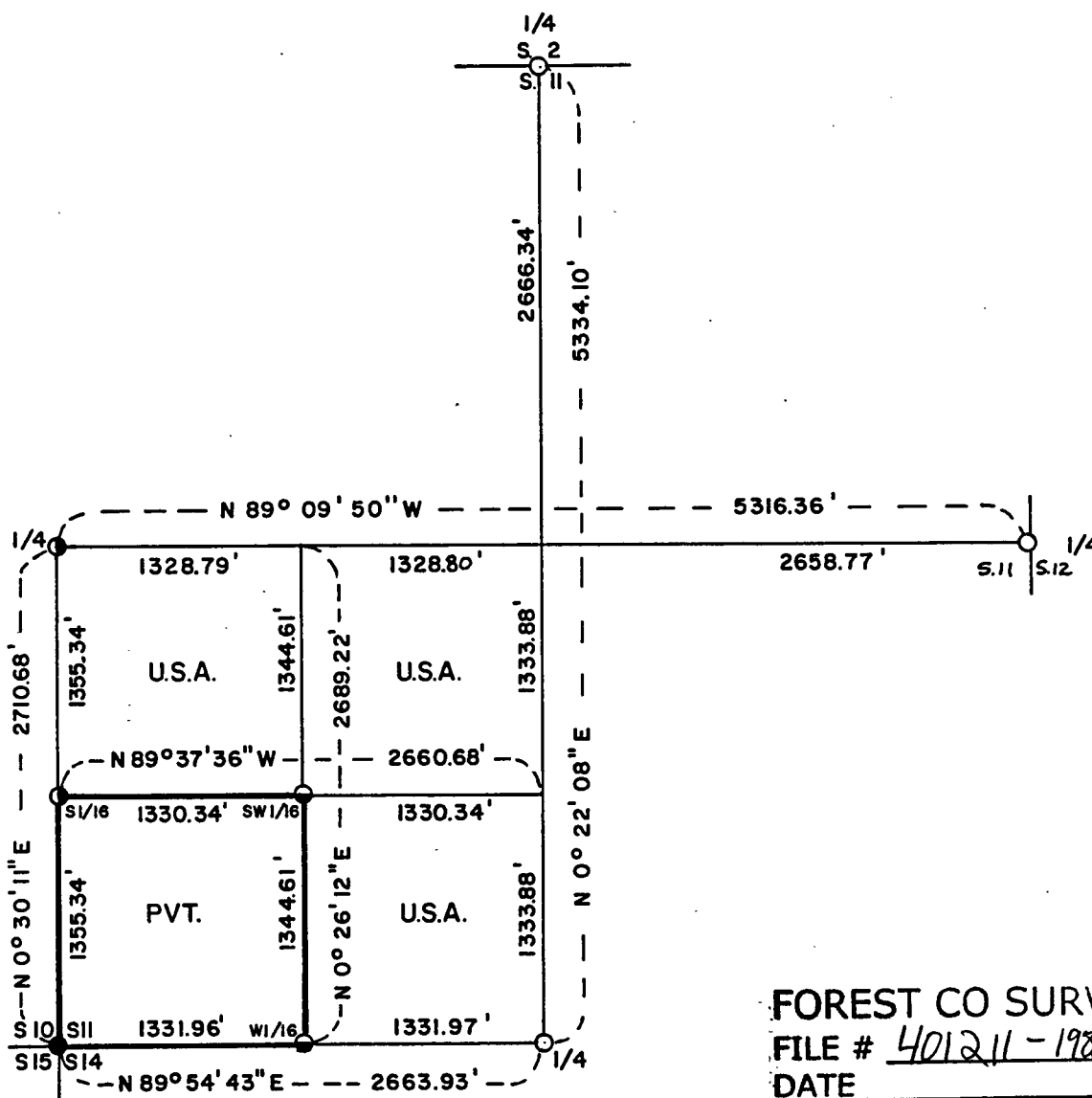


Stock No. 26273

PLAT OF SURVEY FOR CERTIFIED LAND CORNER  
RESTORATION AND ESTABLISHMENT

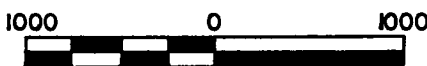
BEING THE CORNERS FOR THE N1/2-SW1/4 AND SE1/4-SW1/4 OF SECTION 11,  
T.40N. R.12E., FOURTH PRINCIPAL MERIDIAN

COUNTY OF FOREST, STATE OF WISCONSIN



FOREST CO SURVEYOR  
FILE # 401211-19860000  
DATE \_\_\_\_\_ BY \_\_\_\_\_

Scale 1" = 1000'



Scale in feet.

LEGEND

- -2 inch I.D. iron pipe monument, 36 inches long with a brass cap stamped to identify the corner found in place, set by dependent resurvey of 1941.
- -Concrete monument with a brass tablet stamped to identify the corner found in place, set by dependent resurvey of 1941.
- ⊙ -2½ inch diameter aluminum pipe monument, 36 inches long with an aluminum cap stamped to identify the corner found in place, set by Robert Winat RLS.
- ⊙ -1 inch diameter aluminum pipe monument, 36 inches long with an aluminum cap stamped to identify the corner.
- -Boundary line marked to Forest Service standards.

NOTE: Bearings are referenced to a solar observation.

Stock No. 26273

Sheet 2 of 3

SURVEY NOTES

This survey was made by Gary L. Pisoni, a Registered Land Surveyor in the State of Wisconsin, for the U.S. Department of Agriculture, Forest Service, for the purpose of recovering, restoring, establishing, marking and perpetuating the corners and boundary lines of U.S. Government land on the perimeter and within Section 11, Township 40 North, Range 12 East, Fourth Principal Meridian, Forest County, State of Wisconsin, as shown on the plat map herewith.

The original Government Subdivision of this township was made by Wm. Daugherty in 1859.

The bearings between corner positions are true bearings as determined by reference to a solar observation. The corners of a local surveyor and corners recovered by dependent resurvey of the U.S. Department of the Interior General Land Office in 1941 marking the perimeter of Section 11 were used as control for the subdivision survey of Section 11.

The accuracy of this survey exceeds the State requirements of 1 in 3000.

The field notes and a copy of the Plat of Survey are on file in the Forest Supervisor's office at Rhinelander, Wisconsin.

The U.S. Government acquired title to lands in Section 11 in 1935 and 1938.

CORNERS RECOVERED AND RESTORED1. Quarter Corner Between Sections 2 and 11.

Corner position marked by a monument from the 1941 Dependent Resurvey.

Corner references: (New)

Sugar Maple	7"	S.68°E.	9.66 feet
Balsam	3"	S.66°W.	18.68 feet
Sugar Maple	8"	N.26°W.	12.26 feet
Steel sign post		South	0.90 feet

2. Quarter Corner Between Sections 11 and 12.

Corner position marked by a monument from the 1941 Dependent Resurvey.

Corner reference:

Sugar Maple	18"	N.78°E.	52.14 feet
New corner references:			
Sugar Maple	7"	S.11°W.	9.81 feet
Sugar Maple	8"	S.86°30'W.	21.79 feet
Steel sign post		North	0.60 feet

3. Quarter Corner Between Sections 11 and 14.

Corner position marked by a monument from the 1941 Dependent Resurvey.

New corner references:

Red Maple	10"	N.09°E.	7.61 feet
Sugar Maple	3"	S.19°W.	12.41 feet
Balsam	7"	S.69°W.	10.32 feet
Steel sign post		S.74°E.	1.0 feet

4. Section Corner Common to Sections 10, 11, 14 and 15.

Corner position marked by a monument from the 1941 Dependent Resurvey.

1985 Corner references (Robert Winat):

Yellow Birch	36"	S.30°W.	3.85 feet
Hemlock	16"	S.05°W.	26.66 feet
Maple	4"	S.70°E.	10.68 feet
Maple	8"	N.12°E.	34.16 feet
Hemlock	20"	N.47°W.	10.53 feet
Wood sign post		S.44°E.	2.1 feet

Stock No. 26273

Survey requested by:

*Gregory F. Forest*  
 District Ranger

Date

*2/4/88*

Sheet 3 of 3

5. Quarter Corner Between Sections 10 and 11.

Corner position recovered as restored by Robert Winat in 1985 from his recorded survey of Section 10, T40N, R12E.

Corner references:

Hemlock	20"	N.59°57'50"E.	110.89 feet
Hemlock	18"	S.52°06'55"E.	118.79 feet
Sugar Maple	16"	S.62°30'W.	91.15 feet
Sugar Maple	22"	N.64°05'E.	47.11 feet
Steel sign post		S.86°E.	2.5 feet

CORNERS ESTABLISHED1. South Sixteenth Corner Between Sections 10 and 11.

Corner position recovered as established by Rbt. Winat in 1985 from his recorded survey of Section 10, T40N, R12E.

Corner references:

Sugar Maple	18"	S.11°E.	12.10 feet
Sugar Maple	15"	N.63°E.	33.64 feet
Sugar Maple	8"	S.61°30'W.	15.92 feet
Steel sign post		N.07°W.	1.51 feet

2. Southwest Sixteenth Corner of Section 11.

Corner position established at the intersection of the straight lines between opposing sixteenth corners positions on the perimeter of the Southwest quarter of Section 11.

Corner references:

Sugar Maple	8"	N.67°E.	10.19 feet
Sugar Maple	7"	N.73°W.	10.25 feet
Steel sign post		South	1.48 feet

3. West Sixteenth Corner Between Sections 11 and 14.

Corner position established at midpoint and on line between the Southwest section corner and the South quarter corner of Section 11.

Corner references:

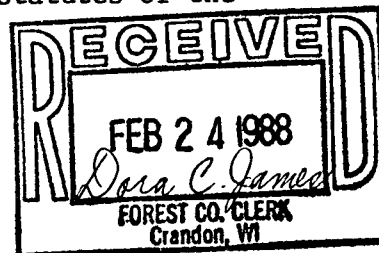
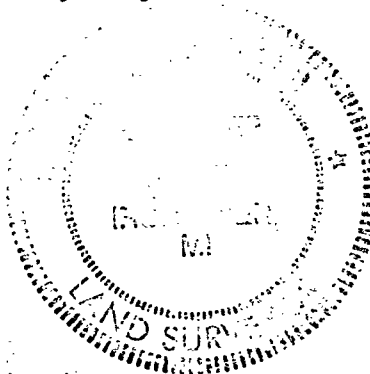
Sugar Maple	7"	N.88°E.	10.80 feet
Sugar Maple	8"	S.09°W.	15.32 feet
Steel sign post		N.45°W.	0.45 feet

SURVEYOR'S CERTIFICATE

State of Wisconsin) ss  
 County of Forest )

I, Gary L. Pisoni, a Cadastral Surveyor, and a registered land surveyor in the State of Wisconsin, hereby certify that I have surveyed and subdivided Section 11, Township 40 North, Range 12 East, Fourth Principal Meridian, State of Wisconsin.

The plat map and survey notes herewith are a correct representation of the land surveyed and divided. I have surveyed and subdivided said section in accordance with the rules for the survey of public lands and with the statutes of the State of Wisconsin.



Date of Survey: 1986

*Gary L. Pisoni*  
 Cadastral Surveyor  
 R.L.S. State of Wisconsin  
 Certificate S-1634