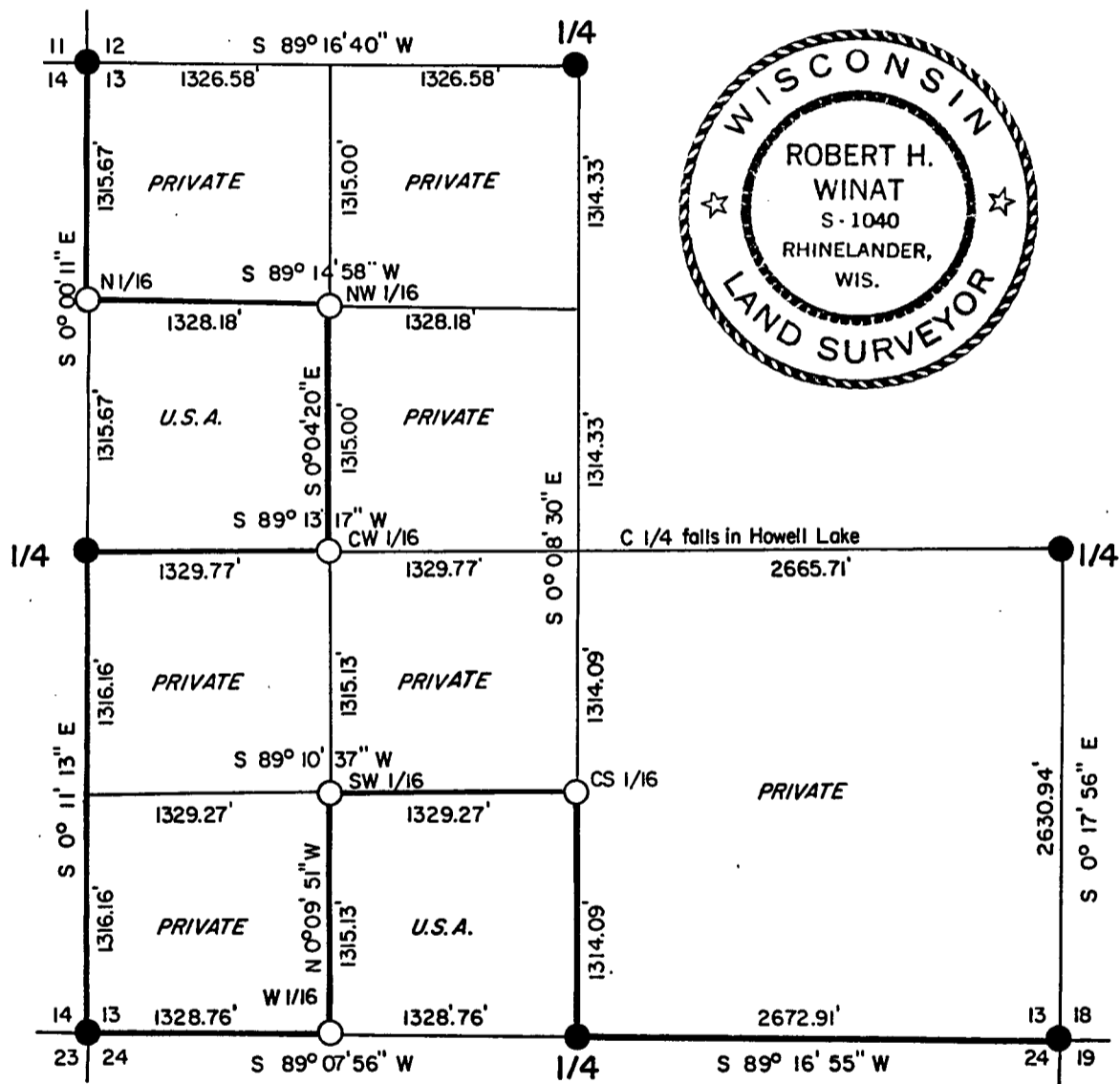
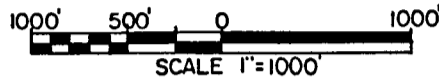


Stock No. 26273

## PLAT OF SURVEY U.S. GOVERNMENT LAND

BEING THE SW 1/4 OF THE NW 1/4 AND THE SE 1/4 OF THE SW 1/4  
OF SECTION 13, TOWNSHIP 40 NORTH, RANGE 12 EAST, FOURTH  
PRINCIPAL MERIDIAN, FOREST COUNTY, STATE OF WISCONSIN.



*Robert H. Winat*  
Robert H. Winat R.L.S. 1040

Dated; 6 NOVEMBER 1984

**LEGEND**

- Recovered 2" iron pipe w/brass cap.
- 2"x36" aluminum monument w/3" aluminum tablet stamped to identify.
- Boundary U.S. Government Land, marked and posted to U.S.F.S. standards.

FOREST CO SURVEYOR  
FILE # 401213-1984/106  
DATE \_\_\_\_\_ BY \_\_\_\_\_

Stock No. 26273

SURVEY NOTES

This survey was made by Robinson & Associates, Inc. pursuant to United States Department of Agriculture, Forest Service "Contract 53-56A6-4-00035, Cadastral Survey", for the purpose of recovering, restoring, establishing, marking and perpetuating the corners and boundary lines of U.S. Government land on the perimeter and within Section 13, T40N, R12E, Fourth Principle Meridian, Forest County, Wisconsin as shown on the plat herewith.

The original Government Survey of the East Township line was made by Gov't. Deputy Surveyor in 1855. The original Government subdivision survey of this township was made by William Dougherty, Gov't. Deputy Surveyor in 1859.

Section 13 was retraced in its entirety during a Dependent Resurvey in 1941 by the U.S. Government Land Office.

Bearings between corner positions are true bearings by reference to a solar observation. All distances shown hereon are in feet and tenths of feet. The Control Traverse was measured by use of electronic distance measuring equipment to a minimum accuracy of one part in 20,000. Corners recovered, restored and established by this survey are marked by the monument described in the map legend. Each monumented corner position is referenced to blazed and scribed bearing trees and described reference objects.

CORNERS RECOVERED AND RESTORED1. Corner to Sections 11-12-13-14

Corner monument is a 2" iron pipe with a bronze tablet recovered in place as set by the G.L.O. Dependent Resurvey of 1941. The following corner references were established:

Maple	19"	N39°E	42.24 feet
Sugar Maple	20"	N60°W	95.75 feet
Sugar Maple	6"	N27°E	9.14 feet
Sugar Maple	7"	S41°30'W	6.09 feet
Metal Sign Post		N0°E	0.50 feet

Stock No. 26273

2. Corner to Sections 13-18-19-24

Corner monument is a 2" iron pipe with a bronze tablet recovered in place as set by the G.L.O. Dependent Resurvey of 1941. The following corner references were found:

Hemlock	16"	N30 <sup>o</sup> E	29.35 feet	(rampike)
Sugar Maple	8"	S72 <sup>o</sup> E	21.32 feet	
Hemlock	14"	N63 <sup>o</sup> E	48.29 feet	
Sugar Maple	11"	S23 <sup>o</sup> 30'W	31.38 feet	
Hemlock	16"	S51 <sup>o</sup> 30'W	49.98 feet	w/visible scribing, rampike
Sugar Maple	8"	N71 <sup>o</sup> W	10.94 feet	
Hemlock	13"	N69 <sup>o</sup> W	17.58 feet	<u>NO</u> painted on tree
4"x4" wood post		S50 <sup>o</sup> E	1.1 feet	

## New Corner references:

Sugar Maple	7"	S26 <sup>o</sup> E	8.38 feet	
Sugar Maple	8"	N40 <sup>o</sup> E	4.42 feet	1941 BT tag partially consumed by tree

3. Corner to Sections 13-14-23-24

Corner monument is a 2" iron pipe with a bronze tablet recovered in place as set by the G.L.O. Dependent Resurvey of 1941. The following corner references were found:

Cedar	5"	S63 <sup>o</sup> 30'W	55.58 feet	(in poor condition)
Cedar	16"	S10 <sup>o</sup> E	56.73 feet	
Spruce	18"	S73 <sup>o</sup> W	53.18 feet	

## New Corner references:

Balsam Fir	6"	N55 <sup>o</sup> 30'W	16.51 feet	
Ash	12"	N19 <sup>o</sup> E	33.25 feet	
Steel sign post		Easterly	1.70 feet	

4. One-Quarter Corner to Sections 12-13

Corner monument is a 2" iron pipe with a bronze tablet recovered in place as set by the G.L.O. Dependent Resurvey of 1941. The following corner references were found:

Tamarack(stub)	7"	N84 <sup>o</sup> 30'E	50.28 feet	Tree is broken off windfall
White Pine	9"	N0 <sup>o</sup> E	26.85 feet	w/scribing visible
Tamarack	6"	S53 <sup>o</sup> 30'E	42.30 feet	
Tamarack	4"	N30 <sup>o</sup> W	4.28 feet	
Spruce	7"	S66 <sup>o</sup> W	31.26 feet	Windfall w/visible scribing

## New Corner reference:

Black Spruce	8"	S81 <sup>o</sup> E	21.36 feet	
Steel sign post		N50 <sup>o</sup> W	3.00 feet	

Stock No. 26273

5. One-Quarter Corner to Sections 13-14

Corner monument is a 2" iron pipe with a bronze tablet recovered in place as set by the G.L.O. Dependent Resurvey of 1941. The following corner references were found:

Black Spruce	5"	N46°30'W	191.50 feet (dead)
Tamarack	6"	S73°E	130.62 feet

## New Corner references:

Black Spruce	5"	S84°W	36.48 feet
Black Spruce	6"	N26°30'E	56.49 feet
Tamarack	4"	S86°E	26.50 feet
Tamarack	3"	S37°E	11.68 feet
Steel sign post		West	0.40 feet

6. One-Quarter Corner to Sections 13-18

Corner monument is a 2" iron pipe with a bronze tablet recovered in place as set by the G.L.O. Dependent Resurvey of 1941. The following corner references were found:

Sugar Maple	12"	S30°E	12.83 feet
Hemlock	13"	N55°30'W	38.91 feet
Decayed Remains		S30°W	11.22 feet

## New Corner references:

Sugar Maple	10"	S69°W	15.23 feet
Sugar Maple	4"	N27°E	7.92 feet
Steel sign post		S80°E	1.10 feet

7. One-Quarter Corner to Sections 13-24

Corner monument is a 2" iron pipe with a bronze tablet recovered in place as set by the G.L.O. Dependent Resurvey of 1941. The following corner references were found:

White Birch	8"	S17°W	3.80 feet
Balsam	9"	S51°E	12.28 feet

## New Corner references:

Maple	8"	N27°W	37.55 feet
White Birch	8"	N19°E	24.69 feet
Steel Sign Post		East	2.00 feet

Stock No. 26273

CORNERS ESTABLISHED1. Center-South Sixteenth Corner

Corner position established at midpoint and on line between the Center 1/4 and South 1/4 corners of Section 13.

## Corner references:

Hemlock	7"	N36°E	39.15 feet
Sugar Maple	5"	S66°E	22.26 feet
Sugar Maple	9"	S46°W	34.04 feet
Steel sign post		S50°W	1.85 feet

2. Center-West Sixteenth Corner

Corner position established at midpoint and on line between the Center 1/4 and West 1/4 corners of Section 13.

## Corner references:

Balsam	5"	N63°E	3.40 feet
Balsam	3"	S12°E	13.42 feet
Balsam	4"	S20°W	9.93 feet
Steel sign post		N4°E	3.00 feet

3. North-Sixteenth Corner to Sections 13-14

Corner position established at midpoint and on line between the North West Section and West 1/4 corners of Section 13.

## Corner references:

White Birch	5"	N10°E	13.40 feet
Sugar Maple	7"	N45°W	13.64 feet
Sugar Maple	4"	S40°W	8.85 feet
Steel sign post		S58°W	1.42 feet

4. West-Sixteenth Corner to Sections 13-24

Corner position established at midpoint and on line between the South West Section and the South 1/4 corners of Section 13.

## Corner references:

Maple	4"	S18°W	23.73 feet
Balsam Fir	5"	S47°E	14.95 feet
Spruce	4"	N57°E	11.09 feet
Steel sign post		West	1.40 feet

Stock No. 26273

5. South-West Sixteenth Corner

Corner position established at the intersection of the sixteenth lines in the SouthWest 1/4 of Section 13.

## Corner references:

Cedar	10"	N70°W	66.62 feet
Yellow Birch	8"	S0°E	37.30 feet
Spruce	11"	S70°E	57.26 feet
Steel Sign Post	East		1.20 feet

6. North-West Sixteenth Corner

Corner position established at the intersection of the sixteenth lines in the NorthWest 1/4 of Section 13.

## Corner references:

Sugar Maple	5"	N30°E	9.85 feet
Sugar Maple	3"	N82°E	8.31 feet
Balsam	5"	S45°30'W	41.22 feet
Steel Sign Post		S30°E	0.50 feet

Stock No. 26273

SURVEYOR'S AFFIDAVIT

State of Wisconsin )  
County of Forest ) ss

I, Robert H. Winat, Cadastral Surveyor, and a registered land surveyor in the State of Wisconsin, hereby certify that I have surveyed and subdivided Section 13, Township 40 North, Range 12 East, Fourth Principal Meridian, State of Wisconsin.

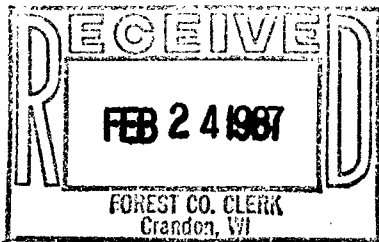
The plat map and survey notes herewith are a correct representation of the land surveyed and divided. I have surveyed and subdivided said section in accordance with the rules for survey of the public lands and with the statutes of the State of Wisconsin.



*Robert H. Winat*  
Registered Land Surveyor, State of Wisconsin  
Certificate # S-1040

Date of Survey: 1984

Plat ready for filing: *D. Frank Haubry*  
District Ranger



*Dora C. James*  
Forest Co. Clerk