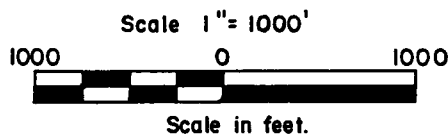
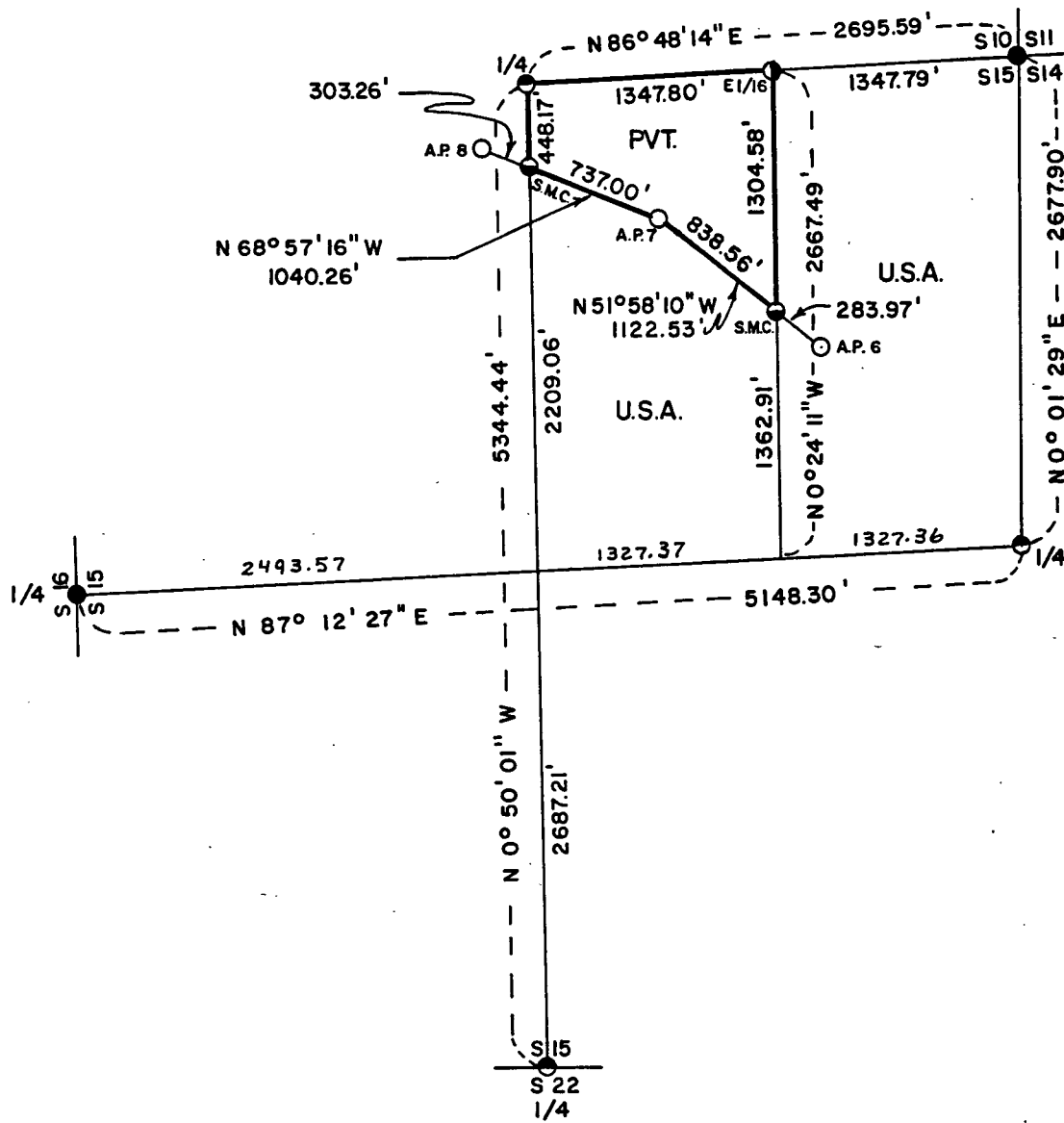


Stock No. 26273

PLAT OF SURVEY FOR CERTIFIED LAND CORNER  
RESTORATION AND ESTABLISHMENT

BEING THE CORNERS FOR THE NE 1/4 OF SECTION 15,  
T.40N. R.12E., FOURTH PRINCIPAL MERIDIAN

COUNTY OF FOREST, STATE OF WISCONSIN



LEGEND

- -1 inch diameter iron post encased in a 4 inch diameter concrete monument, 24 inches long with a brass cap stamped to identify the corner found in place, set by dependent resurvey of 1943.
- -Concrete monument with a brass tablet stamped to identify the corner found in place, set by dependent resurvey of 1941.
- -2 inch I.D. iron pipe monument, 36 inches long with a brass cap stamped to identify the corner found in place, set by dependent resurvey of 1941.
- -2½ inch diameter aluminum pipe monument, 36 inches long with an aluminum cap stamped to identify the corner found in place, set by Robert Winat RLS.
- -1 inch diameter aluminum pipe monument, 36 inches long with an aluminum cap stamped to identify the corner.
- -Boundary line marked to Forest Service standards.

Note:

Bearings are referenced to a solar observation.

FOREST CO SURVEYOR  
FILE # 401215-1986000  
DATE \_\_\_\_\_ BY \_\_\_\_\_

Stock No. 26273

Sheet 2 of 4

SURVEY NOTES

This survey was made by Gary L. Pisoni, a Registered Land Surveyor in the State of Wisconsin, for the U.S. Department of Agriculture, Forest Service, for the purpose of recovering, restoring, establishing, marking and perpetuating the corners and boundary lines of U.S. Government land on the perimeter and within Section 15, Township 40 North, Range 12 East, Fourth Principal Meridian, Forest County, State of Wisconsin, as shown on the plat map herewith.

The original Government Subdivision of this township was made by Wm. Daugherty in 1859.

The bearings between corner positions are true bearings as determined by reference to a solar observation. The corners of a local surveyor and corners recovered by dependent resurvey of the U.S. Department of the Interior General Land Office in 1941 and 1943 marking the perimeter of Section 15 were used as control for the subdivision survey of Section 15.

The accuracy of this survey exceeds the State requirements of 1 in 3000.

The field notes and a copy of the Plat of Survey are on file in the Forest Supervisor's office at Rhinelander, Wisconsin.

The U.S. Government acquired title to land in Section 15 in 1933, 1935 and 1938.

CORNERS RECOVERED AND RESTORED

1. Section Corner Common to Sections 10, 11, 14 and 15.  
Corner position marked by a monument from the 1941 Dependent Resurvey.  
1985 Corner references (Robert Winat):
 

Yellow Birch	36"	S.30°W.	3.85 feet
Hemlock	16"	S.05°W.	26.66 feet
Maple	4"	S.70°E.	10.68 feet
Maple	8"	N.12°E.	34.16 feet
Hemlock	20"	N.47°W.	10.53 feet
Wood sign post		S.44°E.	2.1 feet
  
2. Quarter Corner Between Sections 14 and 15.  
Corner position marked by a monument from the 1941 Dependent Resurvey.  
Corner reference:
 

Hemlock	16"	N.78°E.	122.44 feet
---------	-----	---------	-------------

 1973 corner references: (Resvick)
 

Maple	8"	N.70°W.	41.9 links
-------	----	---------	------------
  
3. Quarter Corner Between Sections 15 and 22.  
Corner position marked by a monument from the 1941 Dependent Resurvey.  
Corner reference (New):
 

Sugar Maple	7"	N.68°E.	49.77 feet
Sugar Maple	8"	S.35°W.	15.86 feet
Sugar Maple	6"	N.46°W.	32.30 feet
Steel sign post		S.67°E.	1.21 feet
  
4. Quarter Corner Between Sections 15 and 16.  
Corner position marked by a monument from the 1941 Dependent Resurvey.  
Corner reference:
 

Maple	7"	N.35°W.	31.02 feet
-------	----	---------	------------

 1967 corner references: (Resvick)
 

White Birch	6"	S.80°E.	53.6 feet
Power Pole	4012-16K19	N.29°E.	28.4 feet
Cedar post	4x4	East	1.0 feet

Stock No. 26273

Sheet 3 of 4

5. Quarter Corner Between Sections 10 and 15.

Corner position marked by a monument from the 1941 Dependent Resurvey.

Corner references: (1984-Robert Winat)

Yellow Birch	11"	N.54°30'E.	54.13 feet
Maple	15"	N.43°30'W.	29.41 feet
Hemlock	16"	S.84°W.	40.40 feet
Hemlock	10"	S.27°30'W.	32.43 feet
Steel sign post		N.07°W.	1.00 feet

6. Angle Point No. 6 of Section 15.

Corner position marked by a monument from the 1943 Dependent Resurvey.

Corner references:

Sugar Maple	28"	N.25°E.	125.40 feet
Hemlock	28"	S.18°30'W.	52.8 feet
Steel sign post		S.48°W.	0.85 feet

7. Angle Point No. 7 of Section 15.

Corner position marked by a monument from the 1943 Dependent Resurvey.

Corner references:

Sugar Maple	28"	S.48°E.	39.60 feet
Sugar Maple	12"	N.78°30'W.	23.57 feet

New corner reference:

Steel sign post		S.05°W.	0.80 feet
-----------------	--	---------	-----------

8. Angle Point No. 8 of Section 15.

Corner position marked by a monument from the 1943 Dependent Resurvey.

Corner references:

Sugar Maple	8"	S.17°30'E.	23.94 feet
Sugar Maple	24"	N.31°W.	16.5 feet
Steel sign post		S.27°W.	1.0 feet

CORNERS ESTABLISHED1. East Sixteenth Corner Between Sections 10 and 15.

Corner position recovered as established by Robert Winat in 1985 from his recorded survey of Section 10, T40N, R12E.

Corner references:

Sugar Maple	7"	S.03°W.	36.28 feet
Sugar Maple	8"	N.51°E.	20.82 feet
Sugar Maple	11"	N.35°30'W.	20.91 feet
Steel sign post		N.20°W.	0.65 feet

2. Special Meander Corner of Section 15.

Corner position established at the intersection of the straight lines between the East Sixteenth corner and the Center-East sixteenth corner and between Angle Point No. 6 and Angle Point No. 7.

Corner references:

Sugar Maple	8"	N.43°30'E.	17.03 feet
Sugar Maple	7"	S.24°E.	20.25 feet
Steel sign post		West	0.70 feet

3. Special Meander Corner of Section 15.

Corner position established at the intersection of the straight lines between Angle Point No. 7 and Angle Point No. 8 and along the North and South One-Quarter line.

Corner references:

Sugar Maple	6"	S.25°E.	11.26 feet
Sugar Maple	6"	N.87°W.	22.85 feet
Steel sign post		North	0.65 feet

Stock No. 26273

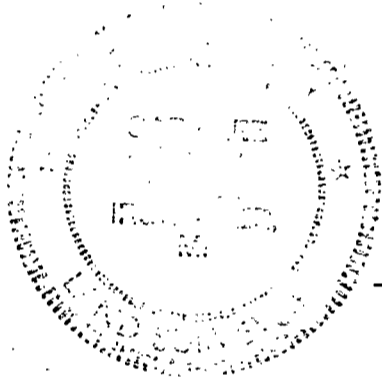
Sheet 4 of 4

SURVEYOR'S CERTIFICATE

State of Wisconsin)  
County of Forest )<sup>ss</sup>

I, Gary L. Pisoni, a Cadastral Surveyor, and a registered land surveyor in the State of Wisconsin, hereby certify that I have surveyed and subdivided Section 15, Township 40 North, Range 12 East, Fourth Principal Meridian, State of Wisconsin.

The plat map and survey notes herewith are a correct representation of the land surveyed and divided. I have surveyed and subdivided said section in accordance with the rules for the survey of public lands and with the statutes of the State of Wisconsin.



Date of Survey: 1986

*Gary L. Pisoni*  
\_\_\_\_\_  
Cadastral Surveyor  
R.L.S. State of Wisconsin  
Certificate S-1634

Survey requested by: *Gregory H. Forest* *2/2/88*  
*ACTING* District Ranger Date

