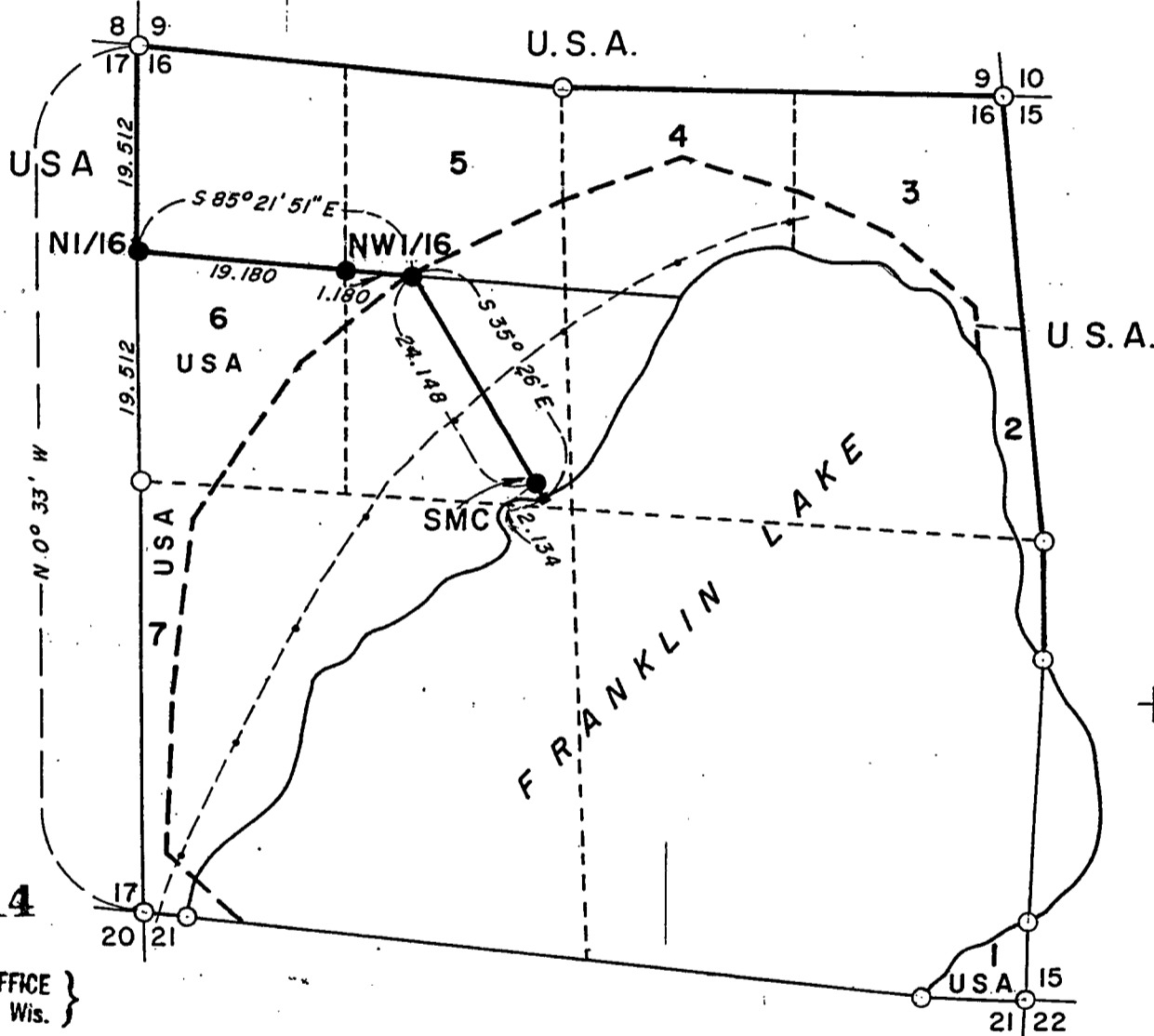


# PLAT OF SURVEY U.S. GOVERNMENT LAND

Being Government Lots 1, 6, and 7, Section 16  
Township 40 North, Range 12 East, Fourth Principal Meridian  
Forest County, Wisconsin



Doc. # 94214

REGISTER'S OFFICE }  
Forest County, Wis. }

Received for record this 27<sup>th</sup> day of FEB.

A. D., 1948 at 9:30 o'clock A. M. and

recorded in Vol. I of CELT. SURVEY

page 326.

*Eugene Stetson*  
Register of Deeds

### LEGEND

- B.L.M. monument - 1941 Dependent Resurvey
- 2 inch I.D. by 5 foot long iron pipe capped with 3 inch brass tablet stamped to identify corner.
- Unserved section subdivision line
- - - Record meander line
- ~ Shoreline (1948 aerial photography)
- Boundary U.S. Government land
- 6 Government Lot
- USA U.S. Government land
- Cedar line post
- SMC Special Meander Corner
- - - Powerline

FOREST CO SURVEYOR  
FILE # 401216-14680227  
DATE \_\_\_\_\_ BY \_\_\_\_\_

326

## PLAT OF SURVEY U.S. GOVERNMENT LAND

Being Government Lots 1, 6, and 7, Section 16  
Township 40 North, Range 12 East Fourth Principal Meridian  
Forest County, Wisconsin

### SURVEY NOTES

This survey was made by the U. S. Department of Agriculture, Forest Service, for the purpose of establishing the riparian frontage of Government lots 6 and 7 on Franklin Lake; being U. S. Government land within section 16, township 40 north, range 12 east, fourth principal meridian, Forest County, Wisconsin.

The land between the record meander line as established by the original Government survey of 1859 and the edge of Franklin Lake, being of substantial acreage, was referred to the Bureau of Land Management for a determination if this land would be unsurveyed public lands within the meaning of the law. The Bureau of Land Management authorized to make such a determination, by letter dated August 16, 1965, File No. 9180.1 (801-E) ruled this land was not omitted from the original Government survey and that the Government lot lines between the record meander line and the edge of Franklin Lake "should be determined by a mathematical proportion of the record meander line to the actual shoreline." These instructions were followed in this survey for establishing the limits of U. S. Government riparian frontage of Government lots 6 and 7.

The north line of Government lot 6 was established by reference to recovered corners from the 1941 dependent resurvey by the Bureau of Land Management and rules for the subdivision survey of this section.

The monumented corner positions are marked by the monument described in the legend.

### Corners Established and Monumented

North Sixteenth Corner to Sections 16-17. Position established at midpoint and on line between the section corner to sections 8-9-16-17 and the quarter corner to sections 16-17.

Corner references established:

W. Pine 4"	S. 52° E.	49.6 feet
W. Pine 5"	S. 41° W.	29.6 feet

Northwest Sixteenth Corner. Position established at the intersection of the straight lines between opposing sixteenth corner positions on the perimeter of the northwest quarter of section 16.

Corner references established:

Black Spruce 3"	S. 82° E.	28.8 feet
Red Pine 4"	S. 20° 30' E.	65.2 feet
Red Pine 4"	S. 76° W.	90.2 feet

Northeast Corner Government Lot 6. Position established on the east-west center-line of the northwest quarter of the section at the point of intersection with the record meander line.

Corner references established:

Black Spruce 4"	S. 46° W.	44.4 feet
Black Spruce 5"	N. 10° E.	2.5 feet

326 A.