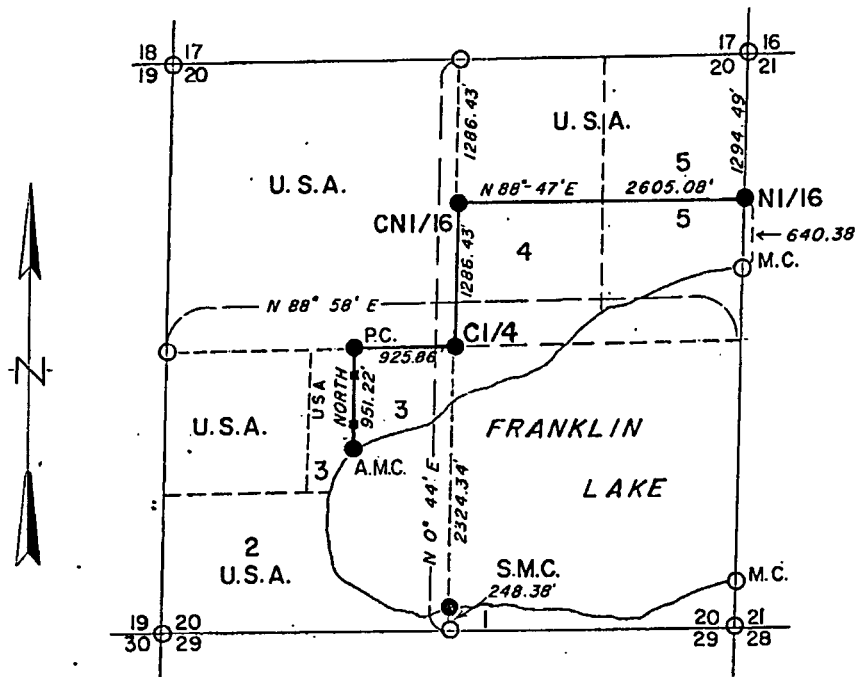
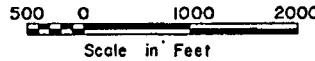


PLAT OF SURVEY U.S. GOVERNMENT LAND

Being the NW1/4, N1/2NE1/4, NW1/4 SW1/4, Government Lot 2
and part Government Lot 3, Section 20
Township 40 North, Range 12 East, Fourth Principal Meridian
Forest County, Wisconsin



LEGEND

- | | |
|--|----------------------------------|
| ○ B.L.M. monument - 1941 Dependent Resurvey | U.S.A. U.S. Government Land |
| ● 2 inch I.D. by 5 foot long iron pipe capped with 3 inch brass tablet stamped to identify corner. | 2 Government Lot |
| --- Section subdivision line | M.C. Meander Corner |
| — Boundary U.S. Government Land | A.M.C. Auxilliary Meander Corner |
| ~ Shoreline (1948 aerial photography) | S.M.C. Special Meander Corner |
| ■ Line post | P.C. Property Corner |

Note: The land acquired by the U.S. Government in Government Lot 5, described as being the North 40 acres, is surveyed as being the NE 1/4 NE 1/4 of Section 20.

Document No 95083

REGISTER'S OFFICE
Forest County, Wis.

Received for record this 31st day of JAN.
A. D., 19 69 at 9:15 o'clock A. M. and
recorded in Vol. I of CERTIFIED
page 252 SURVEY

Eugene J. Ditzel
Register of Deeds

FOREST CO SURVEYOR
FILE # 401280-1969031
DATE _____ BY _____

3528

PLAT OF SURVEY
U.S. GOVERNMENT LAND

Being the NW1/4, N1/2NE1/4, NW1/4 SW1/4, Government Lot 2
and part Government Lot 3, Section 20
Township 40 North, Range 12 East, Fourth Principal Meridian
Forest County, Wisconsin

SURVEY NOTES

This survey was made by the U. S. Department of Agriculture, Forest Service, for the purpose of establishing corners of U. S. Government land within and on the perimeter of section 20, township 40 north, range 12 east, fourth principal meridian, Forest County, Wisconsin. These corners were established in accordance with the rules for the subdivision of a section and in accordance with deed title conveyances of subdivisional parts of the section acquired and exchanged by the U. S. Government.

The original Government survey of township 40 north, range 12 east was made in 1859. In 1941 the U. S. Department of Interior, General Land Office, made a dependent resurvey of this township.

The corners recovered from the 1941 survey and used as control for the subdivision of section 20 were the northeast section corner, the north, west, and south quarter corners, and the meander corner to sections 20 and 21 on the north side of Franklin Lake. The coordinate position of the east quarter corner in Franklin Lake needed as a controlling corner position for the subdivision of section 20 was determined by single proportionate computation between controlling corners on the section line in accordance with required procedure.

The corner positions are marked by the monument described in the legend.

Corners Recovered and Monumented

Special Meander Corner. Corner position on south side Franklin Lake and on the north-south centerline of section marked by post. Replaced post with an iron pipe.

Corner references established:

Maple 9"	S. 46° E.	15.6 feet
W. Pine 5"	N. 81° W.	22.7 feet

Auxiliary Meander Corner. Corner position on the north side of Franklin Lake and 1105 feet southwesterly along the shore of Franklin Lake from the north-south centerline of section found marked by an iron stake in accordance with the description in the deed from the U. S. Government dated 2-26-58 quit claiming 11.10 acres of land in Government lot 3.

Corner references established:

W. Pine	N. 16° W.	95.9 feet
W. Birch	S. 83° W.	9.5 feet
Cedar Post	N. 38° W.	2.6 feet

Document No. 95883

3521

PLAT OF SURVEY
U.S. GOVERNMENT LAND

Being the NW1/4, N1/2NE1/4, NW1/4 SW1/4, Government Lot 2
and part Government Lot 3 Section 20
Township 40 North, Range 12 East, Fourth Principal Meridian
Forest County, Wisconsin

Corners Established and Monumented

Center Quarter Corner. Position established at the intersection of the straight lines between opposing quarter corner positions on the perimeter of section 20.
Corner references established:

Oak 8"	S. 89° 36' W.	50.8 feet
Y. Birch 11"	N. 31° 14' W.	39.3 feet
Power Pole	S. 86° 10' E.	32.4 feet
Cedar Post	NW	1 foot

An iron pipe marking the apparent center quarter corner position bears S. 41° 35' W. 105.6 feet. It is evident this pipe was not placed in accordance with required rules for section subdivision and as such could not be accepted as control for the further subdivision of section 20.

Center North Sixteenth Corner. Position established at midpoint and on line between the north quarter and the center quarter corner of the section.
Corner references established:

Spruce 5"	N. 10° E.	26.3 feet
Spruce 4"	S. 88° W.	10.9 feet
Cedar Post	NW	1.5 feet

An iron pipe marker found at N. 16° 51' W. 32.8 feet is evidence that this pipe was not placed on line and midpoint between controlling corners and as such could not be accepted as marking the center north sixteenth corner position.

North Sixteenth Corner to Sections 20-21. Position established midway and on line between northeast corner and the east quarter corner position of section 20.
Corner references established:

Maple 10"	N. 87° 44' E.	9.3 feet
W. Birch 9"	N. 53° 04' W.	32.5 feet
Power Pole	N. 7° 50' W.	27.6 feet
Cedar Post	NE	1.7 feet

Property Corner. Position established on east-west centerline of section and due north of the auxiliary meander corner in accordance with the description in the deed from the U. S. Government dated 2-26-58 quit claiming 11.10 acres of land in Government lot 3.
Corner references established:

Maple 4"	N. 11° E.	24.1 feet
W. Birch 6"	S. 50° W.	4.1 feet
Cedar Post	South	4 feet

Document No. 95883

CO
CT
29
1

PLAT OF SURVEY
U.S. GOVERNMENT LAND

Being the NW1/4, N1/2NE1/4, NW1/4 SW1/4, Government Lot 2
and part Government Lot 3, Section 20
Township 40 North, Range 12 East, Fourth Principal Meridian
Forest County, Wisconsin

The corner positions established by this survey were located to within an accuracy of 3 feet of position in relation to the controlling dependent corner positions on the perimeter of section 20.

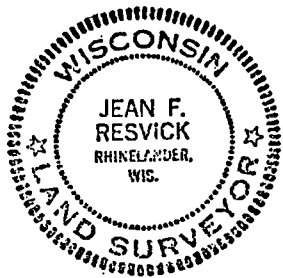
The field notes of this survey and a copy of this plat of survey are on file in the Forest Supervisor's office at Rhinelander, Wisconsin.

SURVEYOR'S AFFIDAVIT

State of Wisconsin)ss
County of Forest)

I, Jean F. Resvick, Cadastral Surveyor, U. S. Forest Service, and a registered land surveyor in the State of Wisconsin, hereby certify that I have surveyed and subdivided section 20, township 40 north, range 12 east, fourth principal meridian, State of Wisconsin.

The plat map and the notes hereon are a correct representation of the land surveyed and divided. I have surveyed and subdivided said section in accordance with the rules for the survey of the public lands and with the statutes of the State of Wisconsin.



Jean F. Resvick

Cadastral Surveyor, U. S. Forest Service
R.L. S. State of Wisconsin
Certificate S-802

September 1968

Document No. 95883

3524