

FOREST CO SURVEYOR

Stock No. 26273

Court House

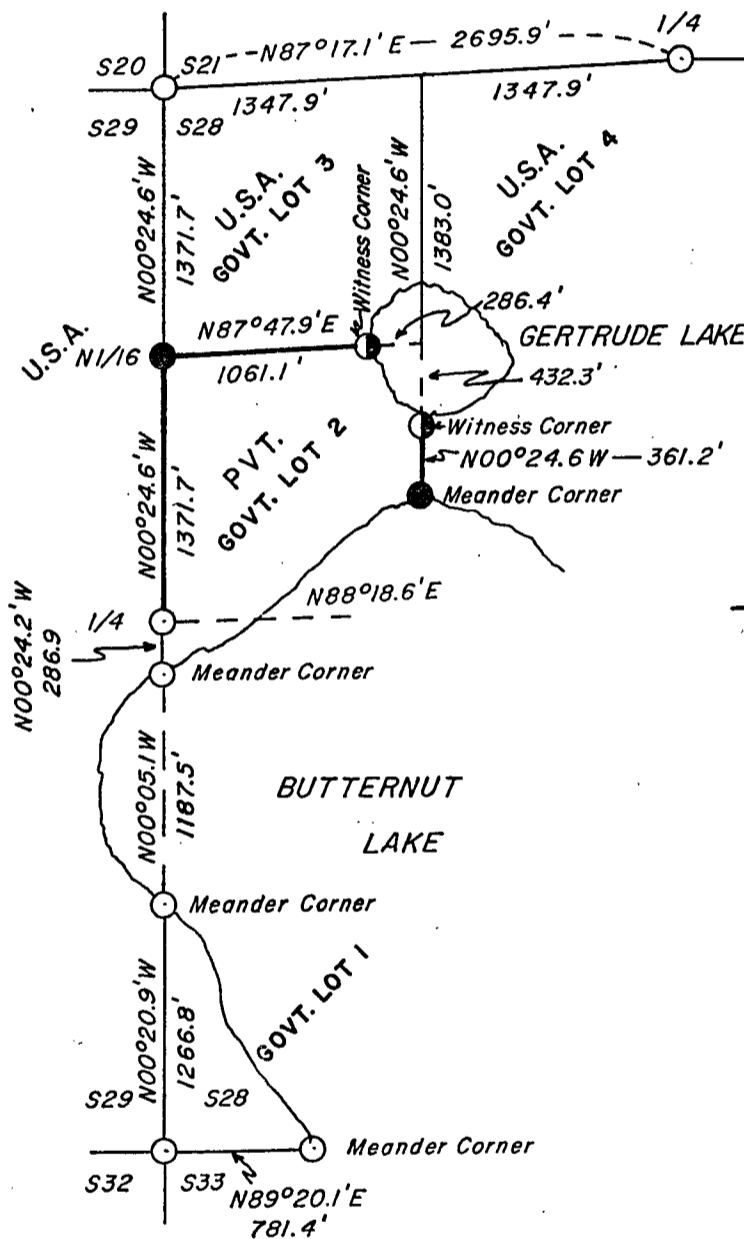
FILE # 401223-1981

DATE _____ BY _____

PLAT OF SURVEY FOR CERTIFIED LAND
CORNER RESTORATION AND ESTABLISHMENT

BEING THE CORNERS FOR GOVERNMENT LOTS 2, 3, AND 4,
SECTION 28, T40N, R12E, FOURTH PRINCIPAL MERIDIAN

COUNTY OF FOREST, STATE OF WISCONSIN



RECEIVED
FOREST CO CLERK
Genesee, WI

JAN 8 1982

Dora C. James

1000' 0 1000'
scale in feet

Scale: 1" = 1000'

CONVERSION FACTORS:
Feet to Meters-0.304801
Meters to feet -3.280833

LEGEND

- Boundary line marked to standard.
- 2½ inch diameter aluminum pipe monument 30 inches long with an aluminum cap stamped to identify the corner.
- ⊙ 2½ inch diameter aluminum pipe monument 5 feet long with an aluminum cap stamped to identify the corner.
- G.L.O. Dependent Resurvey monument.

Note: Bearings are referenced to solar observations.

Stock No. 26273

Sheet 2 of 4

SURVEY NOTES

This survey of Section 28 was surveyed as a fractional section. The bearings of the east-west interior subdivision lines are mean bearings between the north east-west section line of Section 28 and the south east-west section line of Section 28.

The north-south line between Government Lots 3 and 4 is parallel to the section line between the section corner common to Sections 20, 21, 28, 29 and the Quarter Corner to Sections 28 and 29. The north-south line between Government Lots 3 and 4 was extended south to intersect Butternut Lake. The survey of this line is referenced to the Circuit Court Decision dated May 27, 1929, Document Number 43874 filed in Vol. 8, Wisc. Page 200-201 at the Forest County Court House.

CORNERS RECOVERED AND RESTORED1. Quarter Corner between Sections 21 and 28.

Corner position is marked by a monument from the 1941 General Land Office dependent resurvey of this township. Previously recorded on Document Number 100184 August 5, 1971.

2. Section Corner common to Sections 20, 21, 28, 29.

Corner position is marked by a monument from the 1941 General Land Office dependent resurvey of this township.

Corner References Recovered:

Maple 20"	N71°E	36.21 feet
Maple 8"	S22°E	57.14 feet
Maple 17"	S86°W	53.19 feet
Stump Hole	N23°W	41.58 feet

New Corner References:

Maple 14"	S20°E	79.10 feet
Maple 10"	N14°W	36.31 feet

3. Quarter Corner between Sections 28 and 29.

Corner position is marked by a monument from the 1941 General Land Office dependent resurvey of this township. Previously recorded on Document Number 95892, February 1, 1969:

New Corner References:

Maple 9"	S84°W	17.75 feet
----------	-------	------------

4. North Meander Corner between Sections 28 and 29.

Corner position is marked by a monument from the 1941 General Land Office dependent resurvey of this township.

Corner References Recovered:

Oak 14"	N70°E	16.71 feet
---------	-------	------------

New Corner Reference:

SE Corner of Building	S82°W	20.17 feet
-----------------------	-------	------------

Stock No. 26273

Sheet 3 of 4

5. South Meander Corner between Sections 28 and 29.

Corner position is marked by a monument from the 1941 General Land Office dependent resurvey of this township.

Corner References Recovered:

Hemlock 14"	S17°W	50.26 feet
-------------	-------	------------

New Corner References:

Hemlock 16"	S89°E	8.24 feet
Steel Sign Post	NE	1.0 foot

6. Section Corner Common to Sections 28, 29, 32 and 33.

Corner position is marked by a monument from the 1941 General Land Office dependent resurvey of this township.

Corner References Recovered:

Yellow Birch 19"	N57°E	32.70 feet
Hemlock 18"	S65°E	80.36 feet

New Corner References:

Hemlock 16"	N25°W	76.35 feet
Birch 9"	S49°W	36.75 feet

7. West Meander Corner between Sections 28 and 33.

Corner position is marked by a monument from the 1941 General Land Office dependent resurvey of this township.

Corner References Recovered:

Hemlock 16"	S20°W	13.79 feet
Hemlock 19"	S85°W	12.45 feet
Yellow Birch 17"	N15°W	10.65 feet

New Corner References:

Steel Sign Post	North	.50 feet
-----------------	-------	----------

CORNERS ESTABLISHED1. North Sixteenth Corner between Sections 28 and 29.

Corner position established at mid-point and on line between the north-west Section Corner and the west Quarter Corner of Section 28.

Corner References:

Maple 11"	S58°W	31.71 feet
Maple 18"	N28°W	25.54 feet
Steel Sign Post	Northwest	.50 feet

2. Northwest Sixteenth

Corner position is at the intersection of the line between Government Lots 3 and 4 and on line between Government Lots 2 and 3. Corner position falls in Gertrude Lake.

Corner References:

1. Witness corner on west shore of Gertrude Lake between Government Lots 2 and 3.

Spruce 7"	N33°W	4.14 feet
Balsam 9"	S81°E	3.63 feet
Steel Sign Post	North	.50 feet

NW Sixteen Corner Position is in Lake bearing N87°47.9'E, 286.43 feet.

Stock No. 26273

Sheet 4 of 4

2. Witness corner on south shore of Gertrude Lake between Government Lots 3 and 4.

White Pine 20"	S33°E	21.66 feet
White Pine 9"	S89°W	12.30 feet
Steel Sign Post	Southwest	.50 feet

NW Sixteenth corner position is in lake bearing N00°24.6'W, 432.34 feet

3. Special Meander Corner

Corner set on line between Government Lots 3 and 4 at the intersection with the north shore of Butternut Lake.

Corner References:

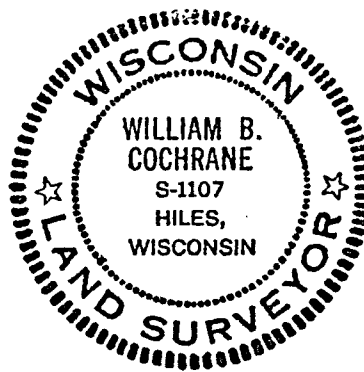
Red Pine 15"	N28°E	7.73 feet
Red Pine 16"	N60°W	26.48 feet
Steel Sign Post	Northeast	.50 feet

SURVEYOR'S AFFIDAVIT

State of Wisconsin)
County of Forest) ss

I, William B. Cochrane, Cadastral Surveyor, U.S. Forest Service, and a registered land surveyor in the State of Wisconsin, hereby certify that I have surveyed and subdivided Section 28, Township 40 North, Range 12 East, Fourth Principal Meridian, State of Wisconsin.

The plat map and survey notes herewith are a correct representation of the land surveyed and divided. I have surveyed and subdivided said section in accordance with the rules for the survey of the public lands and with the statutes of the State of Wisconsin.



William B. Cochrane

Cadastral Surveyor, U.S. Forest Service
R.L.S. State of Wisconsin
Certificate S-1107

Date of Survey: 1981