

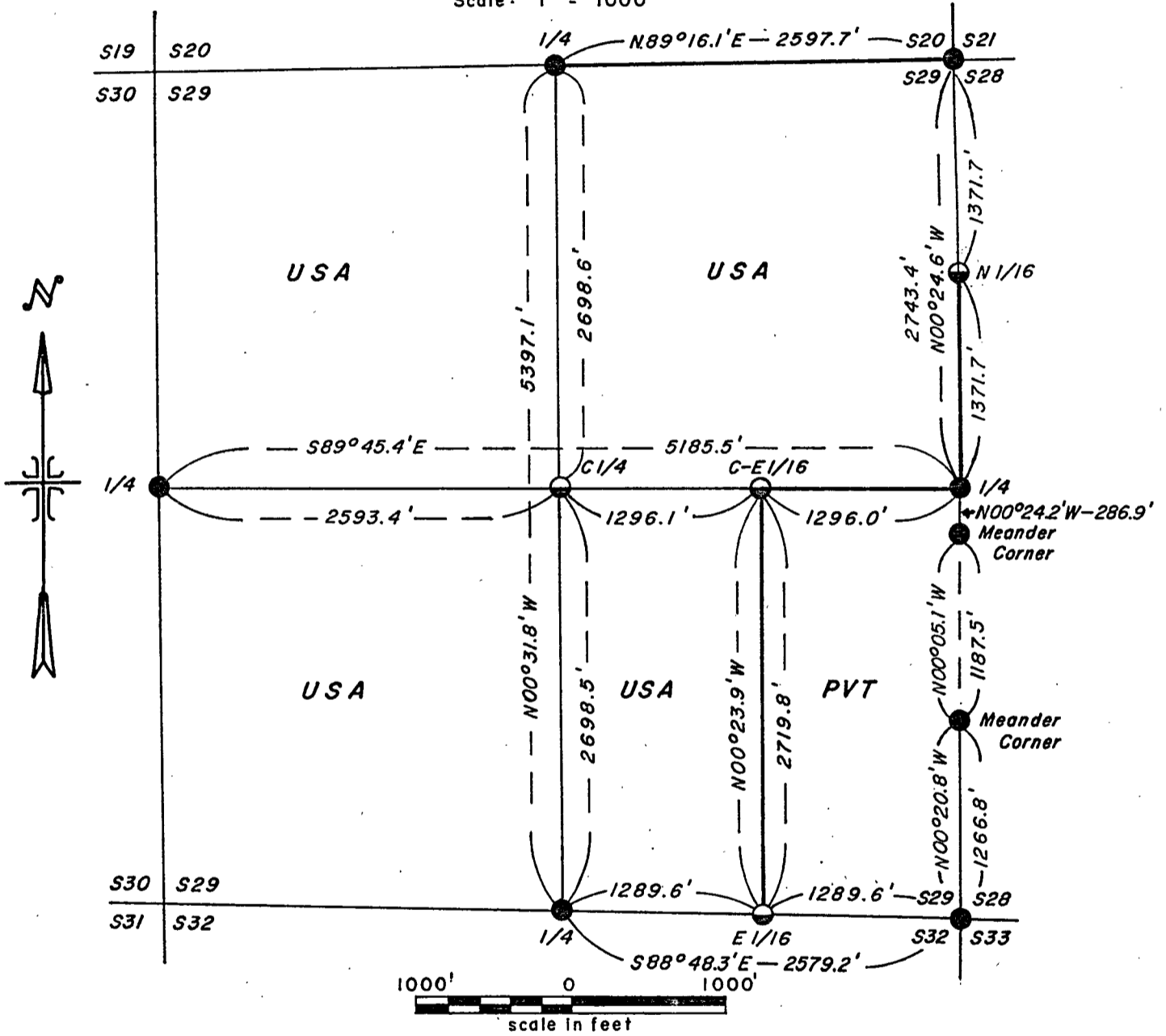
FOREST CO SURVEYOR

FILE # _____
DATE _____ BY _____

PLAT OF SURVEY FOR CERTIFIED LAND
CORNER RESTORATION AND ESTABLISHMENT

BEING THE CORNERS FOR THE W 1/2 OF THE SW 1/4
SECTION 29, T40N, R12E, FOURTH PRINCIPAL MERIDIAN
COUNTY OF FOREST, STATE OF WISCONSIN

Scale: 1" = 1000'



LEGEND

- 2 1/2 inch diameter aluminum pipe monument, 30 inches long with an aluminum cap stamped to identify the corner.
- General Land Office Dependent Resurvey Monuments.
- Boundary U.S. Government land.

RECEIVED
FOREST CO CLERK
Grand, WI

Note: Bearings are referenced to solar observations.

CONVERSION FACTORS:

Feet to Meters — 0.304801
Meters to Feet — 3.280833

JAN 8 1982

FOREST CO SURVEYOR
FILE # 401229-19810000
DATE _____ BY _____

Dora C. James

Stock No. 26273

Sheet 2 of 4

SURVEY NOTES

This survey was made by the U.S. Department of Agriculture, Forest Service, to establish and mark controlling subdivision corners of U.S. Government land.

The original Government subdivision survey of this township was made in 1859. A dependent resurvey was made by the U.S. Department of the Interior General Land Office in 1941. The corners of the dependent resurvey on the perimeter of Section 29 were recovered as control for the subdivision survey of Section 29. All U.S. Government land in Section 29 was acquired in 1938.

CORNERS RECOVERED1. Quarter Corner between 20 and 29.

Corner position is marked by a monument from the 1941 General Land Office dependent resurvey of this township.

Corner references recovered:

Oak 20"	N39°E	30.67 Feet
Hemlock Stump	S59°E	25.15 Feet

New corner reference:

White Birch 13"	S17°E	14.47 Feet
-----------------	-------	------------

2. Quarter Corner between Sections 29 and 30.

Corner position is marked by a monument from the 1941 General Land Office dependent resurvey of this township.

Corner references recovered:

Hemlock Blowdown	N17°E
Birch Snag	S37°W

New corner reference:

Maple 18"	N69°E	24.13 Feet
Maple 24"	S74°W	102.00 Feet

3. Quarter Corner between Sections 29 and 32.

Corner position is marked by a monument from the 1941 General Land Office dependent resurvey of this township.

Corner references recovered:

Hemlock 15"	S67°E	11.17 Feet
-------------	-------	------------

New corner reference:

Sugar Maple 12"	N39°E	27.80 Feet
Steel Sign Post	South	.50 Foot

4. Section Corner Common to Sections 28, 29, 32, 33.

Corner position is marked by a monument from the 1941 General Land Office dependent resurvey of this township.

Corner references recovered:

Yellow Birch 19"	N57°E	32.70 Feet
Hemlock 18"	S65°E	80.36 Feet

New corner references:

Hemlock 16"	N25°W	76.35 Feet
Birch 9"	S49°W	36.75 Feet

Stock No. 26273

Sheet 3 of 4

5. Quarter Corner between Sections 28 and 29.

Corner position is marked by a monument from the 1941 General Land Office dependent resurvey of this township. Previously recorded on Document Number 95892. February 1, 1969.

New corner references:

Maple 9"	S84°W	17.75 Feet
----------	-------	------------

6. Section Corner Common to Sections 20, 21, 28, 29.

Corner position is marked by a monument from the 1941 General Land Office dependent resurvey of this township.

Corner references recovered:

Maple 20"	N71°E	36.21 Feet
Maple 8"	S22°E	57.14 Feet
Maple 17"	S86°W	53.19 Feet
Stump Hole	N23°W	41.58 Feet

New corner references:

Maple 14"	S20°E	79.10 Feet
Maple 10"	N14°W	36.31 Feet

7. North Meander Corner between Sections 28 and 29.

Corner position is marked by a monument from the 1941 General Land Office dependent resurvey of this township.

Corner references recovered:

Black Oak, 14"	N70°E	16.71 Feet
----------------	-------	------------

New corner references:

SE Corner of House	S82°W	20.17 Feet
--------------------	-------	------------

8. South Meander Corner between Sections 28 and 29.

Corner position is marked by a monument from the 1941 General Land Office dependent resurvey of this township.

Corner references recovered:

Hemlock, 14"	S17°W	50.26 Feet
--------------	-------	------------

New corner references:

Hemlock, 16"	S89°E	8.24 Feet
Steel Sign Post	NE	1.0 Foot

CORNERS ESTABLISHED1. Center Quarter Corner of Section 29.

Corner position established on the intersection of the straight lines between opposing 1941 dependent resurvey quarter corners on the perimeter of Section 29.

Corner references:

Maple 8"	N01°E	6.40 Feet
Birch 12"	S49°E	15.31 Feet
Steel Sign Post	North	.50 Foot

Stock No. 26273

Sheet 4 of 4

2. East Center Sixteenth.

Corner position established at mid-point and on line between the east quarter corner and the center quarter corner of Section 29.

Corner references:

White Birch 12"	N52°E	33.36 Feet
White Birch 10"	N82°W	20.10 Feet
Steel Sign Post	Northwest	.50 Foot

3. East Sixteenth Corner between Sections 29 and 32.

Corner position established at mid-point and on line between the south quarter corner and the southeast section corner of Section 29.

Corner references:

Hemlock 16"	S26°W	25.97 Feet
Hemlock 10"	N48°W	50.85 Feet
Steel Sign Post	Southwest	.50 Foot

4. North Sixteenth between Sections 28 and 29.

Corner position established at mid-point and on line between the northeast section corner and the east quarter corner of Section 29.

Corner references:

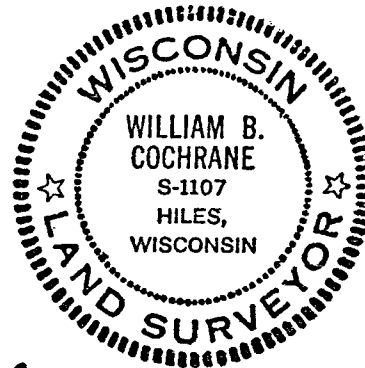
Maple 11"	S58°W	31.71 Feet
Maple 18"	N28°W	25.54 Feet
Steel Sign Post	NW	0.50 Foot

SURVEYOR'S AFFIDAVIT

State of Wisconsin)
County of Forest) SS

I, William B. Cochrane, Cadastral Surveyor, U.S. Forest Service, and a registered land surveyor in the State of Wisconsin, hereby certify that I have surveyed and subdivided Section 29, Township 40 North, Range 12 East, Fourth Principal Meridian, State of Wisconsin.

The plat map and survey notes herewith are a correct representation of the land surveyed and divided. I have surveyed and subdivided said section in accordance with the rules for the survey of the public lands and with the statutes of the State of Wisconsin.



William B. Cochrane
Cadastral Surveyor, U.S. Forest Service
R.L.S. State of Wisconsin
Certificate S-1107

Date of Survey: 1981