

Stock No. 26273

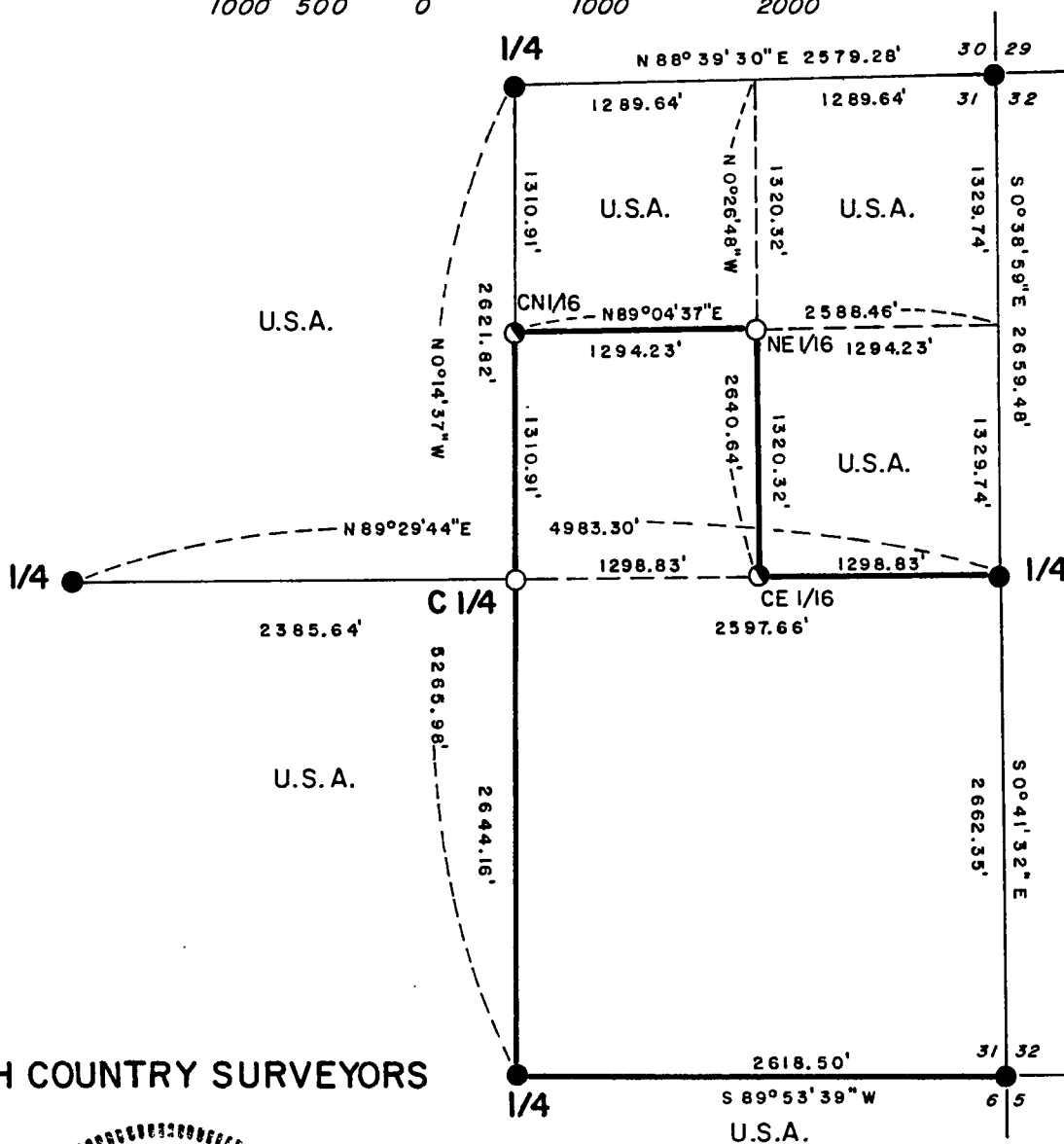
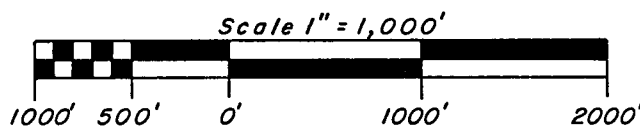
FOREST CO SURVEYOR
FILE # 401231-19840917
DATE _____ BY _____

PLAT OF SURVEY U.S. GOVERNMENT LAND

Being the NW 1/4, SW 1/4, NW 1/4 of the NE 1/4, NE 1/4 of the NE 1/4
and the SE 1/4 of the NE 1/4

Section 31

Township 40 North, Range 12 East, Fourth Principal Meridian
County of Forest, State of Wisconsin



NORTH COUNTRY SURVEYORS



John H. Fisher
John H. Fisher R.L.S. S-836

Dated *Sept. 17, 1984*

LEGEND

- = B.L.M. Monument.
- = Corner position marked by a 2 inch inside diameter 3 foot long aluminium pipe capped with a 3 inch diameter aluminium tablet stamped to identify corner.
- = Corner position marked by a 2 inch inside diameter 5 foot long aluminium pipe capped with a 3 inch diameter aluminium tablet stamped to identify corner.
- = Boundary U.S. Government Land.

Drawn by Dennis B. Roberts

Stock No. 26273

SURVEY NOTES

This survey was made by North Country Surveyors pursuant to United States Department of Agriculture, Forest Service Contract "No. 53-56A6-4-00035, Cadastral Survey" for the purpose of recovering, restoring, establishing, marking and perpetuating the corners and boundary lines of the U.S. Government land on the perimeter and within Section 31, T40N, R12E, Fourth Principal Meridian, Forest County, Wisconsin as shown on the plat herewith.

The original Government Survey of the South and West Township lines were made by Alfred Millard, Deputy Surveyor in 1857. The original Government subdivision survey of this Township was made by William E. Daugherty in 1859.

Exterior corners of Section 31 were established during three separate Dependent Resurveys. The South line was established during the Dependent Resurvey and Extension Survey, Sections 5 and 6, T39N, R12E in 1939. The West line was established during the Dependent Resurvey of E-1/2, T40N, R11E in 1939. The entire section was surveyed during the Dependent Resurvey of the Subdivisional Lines of T40N, R12E in 1941. The monuments established in these resurveys were recovered and are the basis of this survey.

Bearings between corner positions are true bearings by reference to a solar observation. All distances shown thereon are in feet and hundredths of feet. The control traverse was measured by use of electronic distance measuring equipment to an accuracy of one part in 38,600. Corners recovered, restored and established by this survey are marked by the monument described in the map legend. Each monumented corner position is referenced to blazed and scribed bearing trees and described reference objects.

Stock No. 26273

CORNERS RECOVERED

1. Quarter Corner to Sections 31 - 36

Corner is monumented by a 4" diameter concrete monument with a brass tablet as established by the Bureau of Land Management in the 1939 Dependent Resurvey.

Corner References

Nail in White Birch	10"	N28°W	17.30 feet
Nail in White Spruce	8"	S44°E	14.90 feet
Nail in Red Oak	10"	N81°W	31.39 feet
Nail in White Spruce	7"	N43°E	33.21 feet
Steel sign post		N40°W	1.1 feet

2. Quarter Corner to Sections 30 - 31

Corner monument is a 2" iron pipe with a brass tablet as established by the Bureau of Land Management in the Dependent Resurvey in 1941.

Corner References

Nail in Hemlock	18"	N27°W	21.30 feet
Nail in Hemlock	10"	N37°E	14.71 feet
Nail in Sugar Maple	9"	S71°E	13.33 feet
Nail in Hemlock	12"	S62°W	21.12 feet
Steel sign post		S80°W	0.5 feet

3. Corner to Sections 29 - 30 - 31 - 32

Corner monument is a 6" diameter concrete monument with a brass tablet as established by the Bureau of Land Management in the Dependent Resurvey in 1941.

Corner References

Nail in White Birch	9"	N44°W	29.20 feet
Nail in Sugar Maple	14"	S73°W	52.21 feet
Nail in Sugar Maple	8"	N 1°E	17.17 feet
Nail in Sugar Maple	8"	N51°E	20.97 feet
Steel sign post		West	0.8 feet

4. Quarter Corner to Sections 31 - 32

Corner monument is a 2" iron pipe with a brass tablet as established by the Bureau of Land Management in the Dependent Resurvey in 1941.

Stock No. 26273

Corner References

Nail in Sugar Maple	24"	S44°W	10.90 feet
Nail in Yellow Birch	16"	N21°E	11.61 feet
Nail in Basswood	12"	N77°W	34.89 feet
Nail in Sugar Maple	5"	S87°E	24.12 feet
Steel sign post		N50°E	1.4 feet

5. Corner to Sections 31 - 32 - 5 - 6

Corner monument is a 6" diameter concrete monument with a brass tablet as established by the Bureau of Land Management in the Dependent Resurvey in 1939.

Corner References

Nail in Sugar Maple	18"	S60°E	27.37 feet
Nail in Sugar Maple	16"	N50°E	46.83 feet
Nail in Sugar Maple	13"	N60°W	48.35 feet
Nail in Hemlock	9"	N19°E	52.63 feet
Steel sign post		S30°E	1.2 feet

6. Quarter Corner to Sections 31 - 6

Corner monument is a 6" diameter concrete monument with a brass tablet as established by the Bureau of Land Management in the Dependent Resurvey in 1939.

Corner References

Nail in Sugar Maple	7"	N62°E	19.53 feet
Nail in Red Maple	6"	N35°E	10.08 feet
Nail in Sugar Maple	11"	N28°W	26.20 feet
Nail in Red Maple	8"	S88°W	19.61 feet
Steel sign post		N14°W	1.5 feet

CORNERS ESTABLISHED1. Center Quarter Corner, Section 31

Corner position established at the intersection of the straight lines between opposing 1939 and 1941 Dependent Resurvey Quarter Corners on the perimeter of Section 31.

Corner monument is a 2" aluminum pipe 5' long with a 3" diameter aluminum tablet stamped to identify the corner.

Stock No. 26273

Corner References

Nail in Tamarack	5"	S29°W	5.11 feet
Nail in Tamarack	5"	N14°W	8.02 feet
Nail in Tamarack	5"	N75°E	4.81 feet
Steel sign post		South	0.9 feet
RIPCO 1-1/2" iron pipe		N86°E	2.4 feet

2. Center - North 1/16 Corner, Section 31

Position established at mid point and on line between the Center Quarter Corner and North Quarter Corner on the perimeter of Section 31.

Corner monument is a 2" aluminum pipe 3' long with a 3" diameter aluminum tablet stamped to identify the corner.

Corner References

Nail in Red Maple	5"	S23°W	30.00 feet
Nail in Red Maple	7"	N58°E	19.12 feet
Nail in Hemlock	12"	N33°W	10.70 feet
Steel sign post		East	0.8 feet
RIPCO 1" iron pipe		N65°E	2.0 feet

3. Center - East 1/16 Corner, Section 31

Corner established at mid point and on line between the Center Quarter and East Quarter Corner on the perimeter of Section 31.

Corner monument is a 2" aluminum pipe 3' long with a 3" diameter aluminum tablet stamped to identify the corner.

Corner References

Nail in Hemlock	18"	S 9°E	25.51 feet
Nail in Red Maple	5"	N53°W	5.78 feet
Nail in Sugar Maple	6"	N67°W	24.20 feet
Steel sign post		East	0.9 feet
RIPCO 1" iron pipe		N85°E	4.91 feet

4. North - East 1/16 Corner, Section 31

Position established on the intersection of straight lines between opposing sixteenth corners on the perimeter of the Northeast Quarter Section.

Stock No. 26273

Corner monument is a 2" aluminum pipe 5' long with a 3" diameter aluminum tablet stamped to identify the corner.

Corner References

Nail in Hemlock	10"	S 2°W	37.70 feet
Nail in Red Maple	10"	S28°E	21.25 feet
Nail in Hemlock	9"	S88°E	16.71 feet
Steel sign post		South	0.9 feet
RIPCO 1" iron pipe		S47°W	1.64 feet

SURVEYOR'S AFFIDAVIT

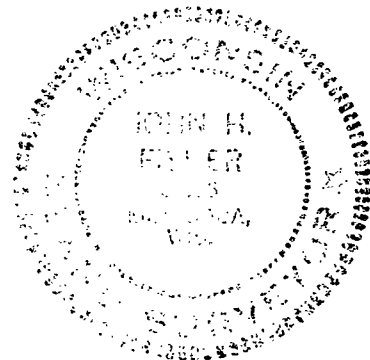
State of Wisconsin)
County of Forest)SS

I, John H. Fisher, Land Surveyor, Registered in the State of Wisconsin, hereby certify that I have surveyed and subdivided Section 31, T40N, R12E, Fourth Principal Meridian, County of Forest, State of Wisconsin, in accordance with the rules of the survey of the public lands and with the statutes of the State of Wisconsin. The plat map and survey notes are an accurate representation of the corners recovered and established.

John H. Fisher 9/17/84
Registered Land Surveyor, State of Wisconsin

Certificate No. S-836

Date of Survey: May - September 1984



Plat ready for filing: *D. Frank Haubig*
District Ranger

Page 6 of 6

FEB 24 1987

Dora C. James
Forest Co. Clerk