

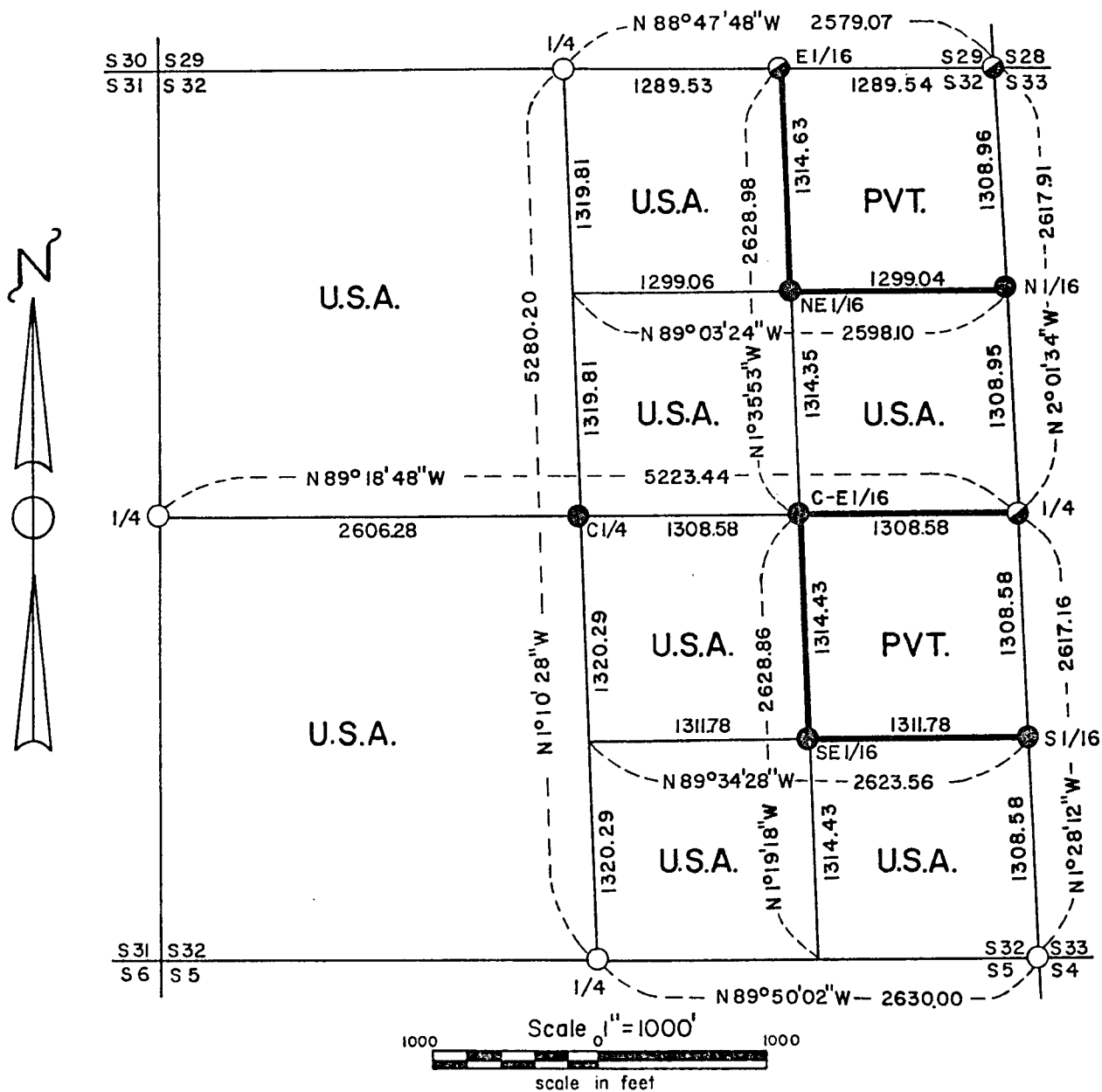
Stock No. 26273

FOREST CO SURVEYOR  
 FILE # 401232-19820000  
 DATE \_\_\_\_\_ BY \_\_\_\_\_

PLAT OF SURVEY FOR CERTIFIED LAND CORNER  
 RESTORATION AND ESTABLISHMENT

BEING THE CORNERS FOR THE W1/2 OF THE NE1/4, THE SE1/4 OF THE NE1/4,  
 THE W1/2 OF THE SE1/4 AND THE SE1/4 OF THE SE1/4 OF SECTION 32, T40N R12E,  
 FOURTH PRINCIPAL MERIDIAN

COUNTY OF FOREST, STATE OF WISCONSIN



LEGEND

- Boundary line marked to standard.
- 2½ inch diameter aluminum pipe monument, 36 inches long with an aluminum cap stamped to identify the corner.
- 2½ inch diameter aluminum pipe monument, 30 inches long with an aluminum cap stamped to identify the corner.
- General Land Office Dependent Resurvey Monuments.

NOTE: Bearings are referenced to solar observations.

CONVERSION FACTORS:  
 Feet to Meters - 0.304801  
 Meters to Feet - 3.280833

## Stock No. 26273

Sheet 2 of 5

SURVEY NOTES

This survey was made by Gary L. Pisoni, a Registered Land Surveyor in the State of Wisconsin, for the U.S. Department of Agriculture, Forest Service, to establish and mark controlling subdivision corners of U.S. Government Land in Section 32, Township 40 North, Range 12 East, Fourth Principal Meridian, Forest County, Wisconsin.

The original Government survey of this township was made in 1859.

A dependent re-survey was made by the U.S. Department of the Interior General Land Office in 1939 and 1941. The corners of the dependent re-survey of the perimeter of Section 32 were recovered as control for the subdivision survey of Section 32.

The U.S. Government acquired title to lands in Sections 32 in 1941.

The bearings between corner positions are true bearings as determined by reference to solar observations. The accuracy of this survey exceeds the State requirements of 1 in 3000.

The field notes and a copy of the Plat of Survey are on file in the Forest Supervisor's office in Rhinelander, Wisconsin.

CORNERS RECOVERED AND RESTORED1. Section Corner Common to Sections 29, 28, 32 and 33.

Corner position is marked by a 2½ inch diameter aluminum pipe monument, 30 inches long with an aluminum cap.

Corner references recovered:

Yellow Birch	19"	N.57°E.	32.34 feet
Hemlock	18"	S.64°E.	79.86 feet
Yellow Birch	9"	S.49°W.	36.75 feet
Hemlock	16"	N.25°W.	76.35 feet

2. Quarter Corner Between Sections 32 and 33.

Corner position is marked by a 2½ inch diameter aluminum pipe monument, 30 inches long with an aluminum cap.

Corner references recovered:

Maple	16"	N.36°15'E.	57.09 feet
Maple	21"	N.52°45'W.	50.52 feet

3. Section Corner Common to Sections 32, 33, 5 and 4.

Corner position is marked by a monument from the 1939 Dependent Resurvey of this township.

Corner references recovered:

Sugar Maple	23"	N.82°E.	22.44 feet
Hemlock	15"	S.17°30'E.	36.30 feet
Sugar Maple	23"	S.65°45'W.	56.10 feet
Cedar post	4"x4"	Northeast	0.50 feet

New Corner reference:

Hemlock	21"	N.41°W.	72.12 feet
---------	-----	---------	------------

## Stock No. 26273

Sheet 3 of 5

4. Quarter Corner Between Sections 32 and 5.

Corner position is marked by a monument from the 1939 Dependent Resurvey of this township.

## Corner references recovered:

Hemlock	18"	N.23 <sup>o</sup> 15'E.	14.52 feet
Hemlock(tip-out)		S.4 <sup>o</sup> E.	15.84 feet
Maple	22"	S.40 <sup>o</sup> E.	68.24 feet

## New Corner references:

Maple	17"	S.58 <sup>o</sup> E.	102.95 feet
Steel sign post		Southeast	0.75 feet

5. Quarter Corner Between Sections 31 and 32.

Corner position is marked by a monument from the 1939 Dependent Resurvey of this township.

## Corner references recovered:

Yellow Birch	15"	N.27 <sup>o</sup> E.	11.20 feet
Maple	24"	S.36 <sup>o</sup> W.	11.22 feet
Steel sign post		Northeast	1.50 feet

6. Quarter Corner Between Sections 29 and 32.

Corner position is marked by a monument from the 1939 Dependent Resurvey of this township.

## Corner references recovered:

Hemlock	15"	S.67 <sup>o</sup> E.	11.17 feet
Maple(Stump Hole)		N.54 <sup>o</sup> W.	3.30 feet

## New Corner references:

Sugar Maple	12"	N.39 <sup>o</sup> E.	27.80 feet
Steel sign post		South	0.50 feet

CORNERS ESTABLISHED1. East Sixteenth Corner Between Sections 29 and 32.

Corner position established at midpoint and on line between the North quarter corner and the Northeast section corner of Section 32.

## Corner references:

Hemlock	16"	S.26 <sup>o</sup> W.	25.97 feet
Hemlock	10"	N.48 <sup>o</sup> W.	50.85 feet
Steel sign post		Southwest	0.50 feet

2. North Sixteenth Corner Between Sections 32 and 33.

Corner position established at midpoint and on line between the East quarter corner and the Northeast section corner of Section 32.

## Corner references:

Hemlock	25"	S.42 <sup>o</sup> E.	55.45 feet
Sugar Maple	20"	S.39 <sup>o</sup> 30'W.	81.09 feet

## Stock No. 26273

Sheet 4 of 5

3. Northeast Sixteenth Corner.

Corner established at the intersection of the straight lines between opposing sixteenth corner positions on the perimeter of the Northeast quarter of Section 32.

## Corner references:

Basswood	17"	S.71 <sup>0</sup> E.	23.85 feet
Sugar Maple	22"	S.3 <sup>0</sup> 30'W.	38.53 feet
Fiberglass sign post		Northwest	0.90 feet

4. South Sixteenth Corner Between Sections 32 and 33.

Corner position established at midpoint and on line between the East quarter corner and the Southeast section corner of Section 32.

## Corner references:

Sugar Maple	17"	S.34 <sup>0</sup> 30'E.	71.03 feet
Basswood	10"	S.47 <sup>0</sup> W.	74.86 feet

5. Southeast Sixteenth Corner.

Corner established at the intersection of the straight lines between opposing sixteenth corner positions on the perimeter of the Southeast quarter of Section 32.

## Corner references:

Sugar Maple	9"	S.71 <sup>0</sup> E.	76.56 feet
Sugar Maple	9"	S.33 <sup>0</sup> W.	27.95 feet
Fiberglass sign post		Northwest	0.80 feet

6. Center East Sixteenth Corner.

Corner established at midpoint and on line between the East quarter corner and the Center quarter corner of Section 32.

## Corner references:

Sugar Maple	13"	N.42 <sup>0</sup> 30'E.	5.69 feet
Sugar Maple	17"	N.82 <sup>0</sup> 30'W.	32.66 feet
Fiberglass sign post		Northwest	1.00 feet

7. Center Quarter Corner.

Corner position established at the intersection of the straight lines between opposing quarter corners on the perimeter of Section 32.

## Corner references:

Sugar Maple	14"	S.73 <sup>0</sup> 30'E.	28.13 feet
Sugar Maple	8"	N.23 <sup>0</sup> W.	26.37 feet
Fiberglass sign post		North	1.10 feet

Stock No. 26273

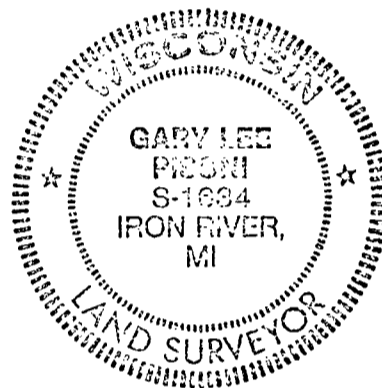
Sheet 5 of 5

SURVEYOR'S AFFIDAVIT

State of Wisconsin) )  
County of Forest ) SS

I, Gary L. Pisoni, a Cadastral Surveyor, and a registered land surveyor in the State of Wisconsin, hereby certify that I have surveyed and subdivided Section 32, Township 40 North, Range 12 East, Fourth Principal Meridian, State of Wisconsin.

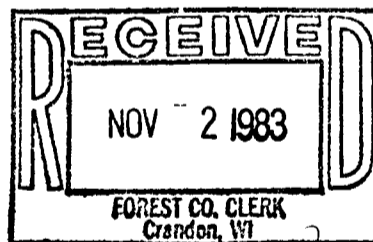
The plat map and survey notes herewith are a correct representation of the land surveyed and divided. I have surveyed and subdivided said section in accordance with the rules for the survey of the public lands and with the statutes of the State of Wisconsin.



*Gary L. Pisoni*

Cadastral Surveyor  
R.L.S. State of Wisconsin  
Certificate S-1634

Date of Survey: 1982



*Dora C. James*