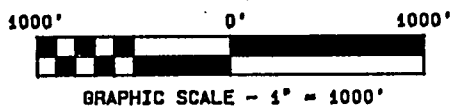
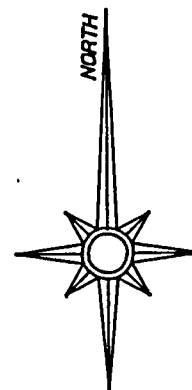
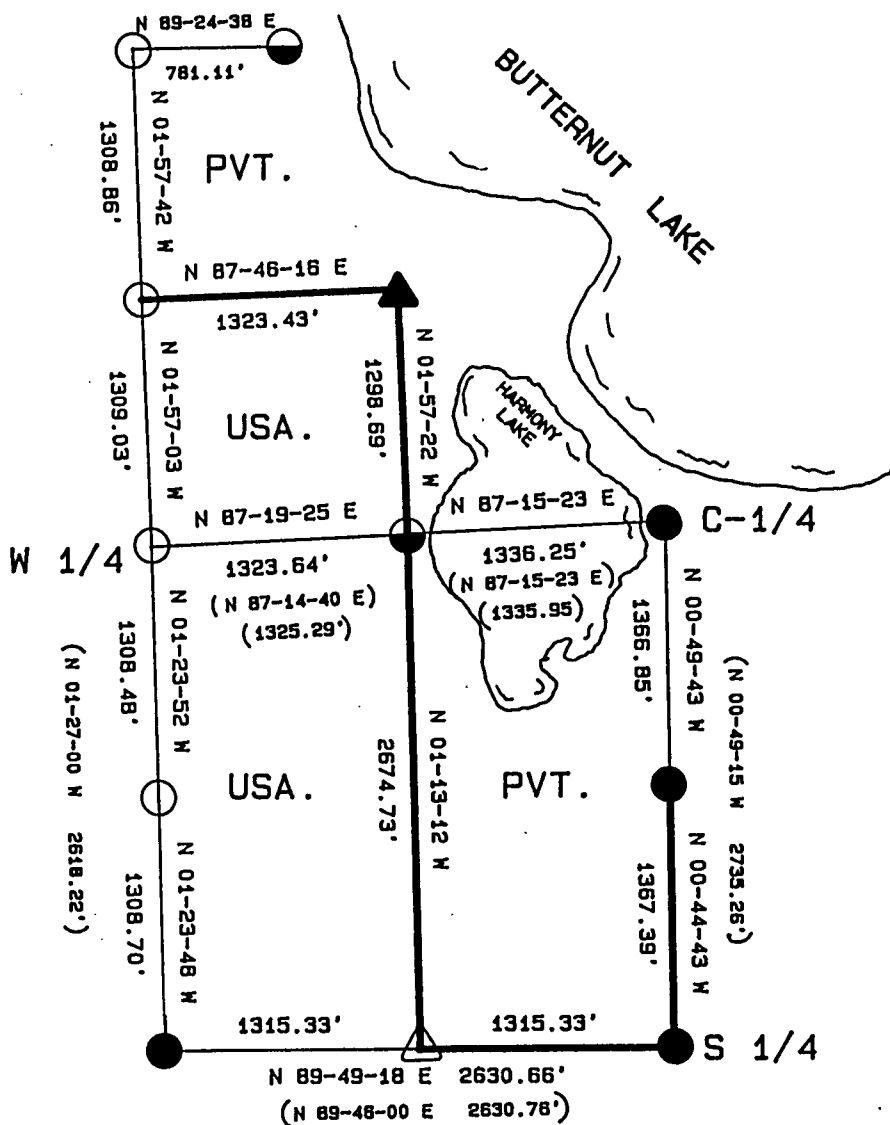


PLAT OF SURVEY FOR CERTIFIED LAND CORNER
RESTORATION AND ESTABLISHMENT

BEING THE CORNERS FOR THE SW 1/4 OF THE NW 1/4
AND THE W 1/2 OF THE SW 1/4

SECTION 33, TOWNSHIP 40 NORTH, RANGE 12 EAST

COUNTY OF FOREST, STATE OF WISCONSIN



FOREST CO SURVEYOR
FILE # 4-1233-188000
DATE 4/12/33 BY

LEGEND

- () DISTANCE AND BEARING BY JEAN RESVICK IN 1964.
- 6 INCH DIAMETER CONCRETE MONUMENT WITH BRASS CAP.
- △ 1 INCH DIAMETER ALUMINUM PIPE MONUMENT 36 INCHES LONG WITH AN ALUMINUM CAP.
- ▲ 1 INCH DIAMETER ALUMINUM PIPE MONUMENT 60 INCHES LONG WITH AN ALUMINUM CAP.
- ◐ 2 1/2 INCH DIAMETER GALVANIZED IRON PIPE MONUMENT 36 INCHES LONG WITH BRASS CAP.
- BOUNDARY LINE MARKED TO FOREST SERVICE STANDARD.
- 2 1/2 INCH DIAMETER ALUMINUM PIPE MONUMENT 36 INCHES LONG WITH AN ALUMINUM CAP.

Stock No. 26273

T40N R12E, SECTION 33

page 2 of 4

SURVEY NOTES

This survey was made by the U.S. Department of Agriculture, Forest Service for the purpose of recovering, restoring, establishing, marking, and perpetuating the corners and boundary lines of U.S. Government land on the perimeter and within Section 33, Township 40 North, Range 12 East, Fourth Principal Meridian, Forest County, State of Wisconsin as shown on the Plat map herewith.

The U.S. Government land within Section 33 was acquired in 1941, 1942, 1950 and 1963.

Jean Resvick Surveyed a portion of this section in 1963. And recorded the plat in 1964.

The original government subdivision of this township was made in 1860.

The bearings between corner positions are true bearings as determined by reference to solar observations. The accuracy of this survey exceeds the State requirement for closure of 1 in 3,000. Corners recovered or established by this survey are marked as described in the map legend. Each monumented corner is referenced to blazed, scribed, painted and tagged bearing trees. Tie bearings are magnetic, and not corrected for declination.

The field notes and a copy of the Plat of survey are on file in the Forest Service Supervisor's Office at Rhinelander, Wisconsin.

CORNERS RECOVERED AND RESTORED1. South Quarter Corner.

Corner position recovered as restored by Dependent Resurvey in 1941. and by Jean Resvick in 1963.

Corner references recovered:

Hemlock	15"	N61°E	32.70 feet
Hemlock	14"	S43°W	36.30 feet
Hemlock	13"	N06°W	19.40 feet
Wood sign post		Southeast	1.00 feet

2. Southwest Section Corner.

Corner position recovered as restored by Dependent Resurvey in 1939.

Corner references recovered:

S. Maple	23"	N82°E	22.44 feet
Hemlock	15"	S17°E	36.30 feet
S. Maple	23"	S66°W	56.10 feet
Hemlock	21"	N41°W	72.12 feet

3. East Quarter Corner.

Corner position recovered as restored by Dependent Resurvey in 1941.

Note: Resurvey monument has been replaced with an aluminum monument.

Corner references recovered:

Maple	16"	N36°E	57.09 feet
Maple	21"	N53°W	50.52 feet

4. Northwest Section Corner.

Corner position recovered as restored by Dependent Resurvey in 1941.

Note: Resurvey monument has been replaced with an aluminum monument.

Corner references recovered:

Y. Birch	19"	N57°E	32.70 feet
Hemlock	18"	S65°E	80.36 feet
Y. Birch	9"	S49°W	36.75 feet
Hemlock	16"	N25°W	76.35 feet

Stock No. 26273

T40N R12E SECTION 33

page 3 of 4

5. Meander Corner between Sections 28 and 33 on East Shore of Butternut Lake.

Corner position recovered as restored by Dependent Resurvey in 1941.

Corner references recovered:

Hemlock	16"	S20°W	13.79 feet
Hemlock	19"	S85°W	12.45 feet
Y. Birch	17"	N15°W	10.65 feet
Steel sign post		North	0.50 feet

CORNERS ESTABLISHED1. Center-Quarter Corner.

Corner position recovered as established by Jean Resvick in 1963.

Corner references recovered:

Hemlock	9"	N46°W	5.90 feet
Hemlock	6"	N70°E	8.40 feet

2. Center-South sixteenth Corner.

Corner position recovered as established by Jean Resvick in 1963.

Corner references recovered:

Maple	6"	N59°W	11.20 feet
Maple	26"	N88°E	23.00 feet

3. Center-West Sixteenth Corner.

Corner position recovered as established by Jean Resvick in 1963 from acceptance of 4x4 wood post in place for over 20 years.

Corner references recovered:

Hemlock	7"	N08°E	31.30 feet
Hemlock	7"	S61°W	29.55 feet
Hemlock	17"	N31°W	6.40 feet
wood sign post		West	2.00 feet

4. West Sixteenth Corner between Sections 4 and 33.

Corner position established at midpoint and on line between the Southwest and South Quarter Corner.

Corner references:

Maple	8"	S22°W	13.60 feet
Y. Birch	18"	N33°W	5.60 feet
Steel sign post		Northwest	1.00 feet

5. Northwest Sixteenth Corner.

Corner position established using a mean bearing between the Northwest Section Corner to the Meander corner on the West shore of Butternut Lake and from the West Quarter Corner to the Center-Quarter Corner for the East-West line. And on an equal bearing from the West Quarter Corner to the Northwest Section Corner for the North-South line.

Corner references:

W. Pine	8"	N23°E	17.35 feet
W. Pine	4"	S40°W	8.63 feet
Steel sign post		Northeast	0.50 feet

6. North Sixteenth Corner between Sections 32 and 33.

Corner position established at midpoint and on line between the West Quarter Corner and the Northwest Section Corner.

Corner references:

Hemlock	25"	S42°E	55.45 feet
S. Maple	20"	S39°W	81.09 feet

Stock No. 26273

T40N R12E SECTION 33

page 4 of 4

7. South Sixteenth Corner between Sections 32 and 33.

Corner position established at midpoint and on line between the West Quarter Corner and the Southwest Section Corner.

Corner references:

S. Maple	17"	S34°E	71.03 feet
Basswood	10"	S47°W	74.86 feet

SURVEYOR'S AFFIDAVITState of Wisconsin)
County of Forest)

I William B. Cochrane, Land Surveyor, U.S. Forest Service, and a registered Land Surveyor in the State of Wisconsin, hereby certify that I have surveyed and subdivided Section 33 Township 40 North, Range 12 East, Fourth Principal Meridian, State of Wisconsin.

The plat map and survey notes herewith are a correct representation of the land surveyed and divided. I have surveyed and subdivided said section in accordance with the rules for the survey of the public lands and with the statutes of the State of Wisconsin.



William B. Cochrane
 Land Surveyor, U.S.D.A. Forest Service
 R.L.S. State of Wisconsin
 Certificate S-1107

Date of Survey: 1988.

Survey requested by:

Cam Gordue
 District Ranger

3/1/90

Date

