

Stock No. 26273

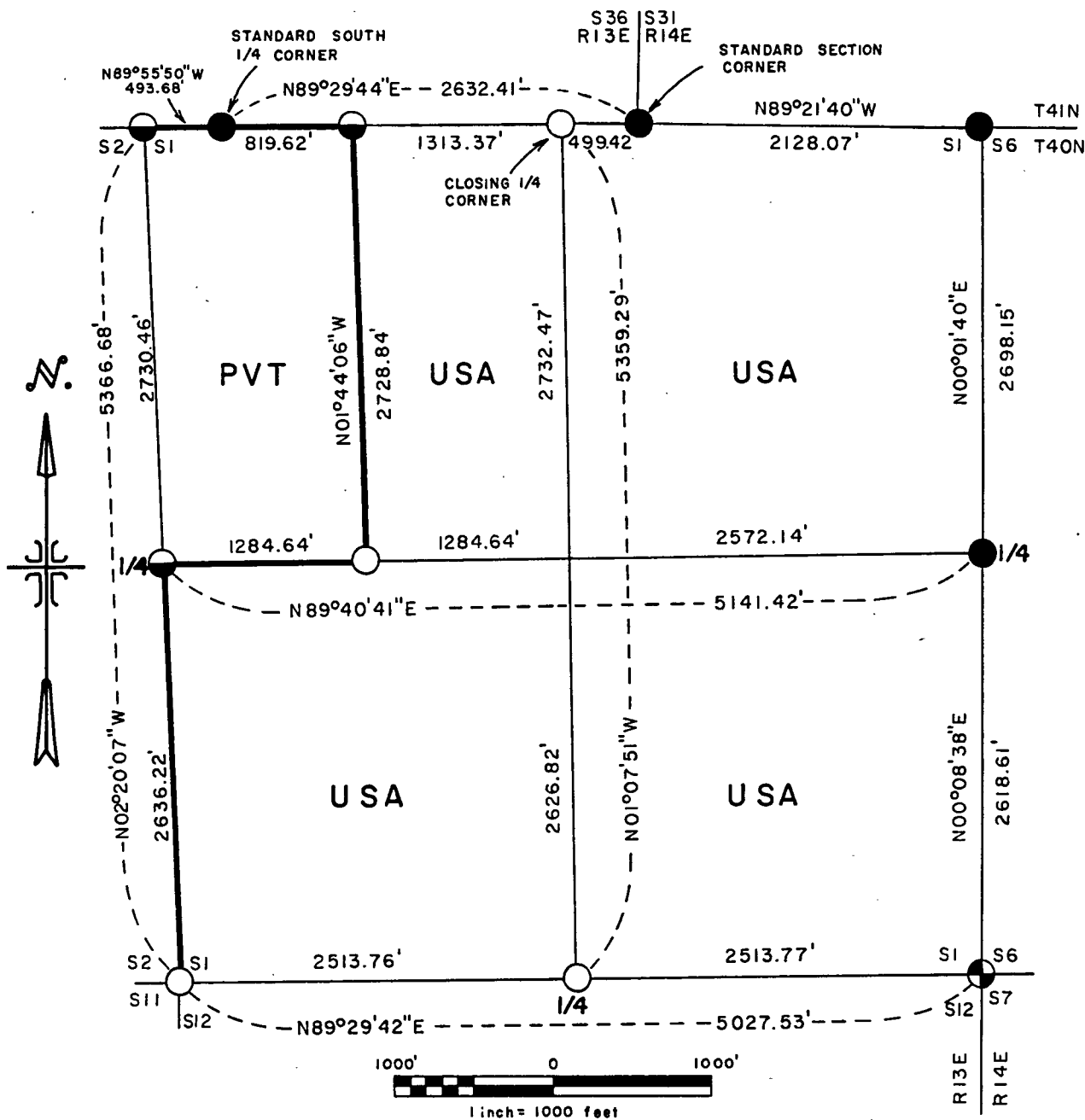
T40N - R13E, SECTION 1

PLAT OF SURVEY FOR CERTIFIED LAND CORNER
RESTORATION AND ESTABLISHMENT

sheet 1 of 4

BEING THE CORNERS FOR THE E $\frac{1}{2}$ OF THE NW $\frac{1}{4}$
AND THE CORNERS ON THE PERIMETER OF THE SECTION

SECTION 1 TOWNSHIP 40 NORTH, RANGE 13 EAST
FOURTH PRINCIPAL MERIDIAN, FOREST COUNTY, STATE OF WISCONSIN



LEGEND

- 2½ inch diameter aluminum pipe monument, 36 inches long with an aluminum cap.
- ◐ 2½ inch diameter aluminum pipe monument, 60 inches long with an aluminum cap.
- ⊕ Railroad spike in blacktop.
- G.L.O. dependent resurvey monument.
- boundary line marked to Forest Service Standards.

FOREST CO SURVEYOR
FILE # 401301-19670309
DATE _____ BY _____

Stock No. 26273

T40N - R13E SECTION 1

sheet 2 of 4

SURVEY NOTES

This survey was made by the U.S. Department of Agriculture, Forest Service, for the purpose of recovering, restoring, establishing, marking, and perpetuating the corners and boundary lines of U.S. Government land on the perimeter and within Section 1 Township 40 North, Range 13 East, Fourth Principal Meridian, Forest County, State of Wisconsin as shown on the plat map herewith.

The U.S. Government land within Section 1 was acquired in 1935.

The original government subdivision survey of this township was made in 1865.

The field notes of this survey and a copy of the plat of survey are on file in the Forest Service Supervisor's Office at Rhinelander, Wisconsin.

CORNERS RECOVERED AND RESTORED1. Northeast Closing Section Corner.

Corner position recovered as restored by 1945 Dependent resurvey.

Corner references recovered:

Aspen	stump	S55°E	48½ Lks
Elm	stump	S10°W	129½ Lks

Corner references:

Recent clear cut has removed all available bearing trees.			
Steel sign post		North	0.50 feet

2. East Quarter Corner.

Corner position recovered as restored by Dependent Resurvey of 1945.

No remains of the 1945 references were recovered.

New Corner references:

Maple	5"	S11°W	27.10 feet
Maple	5"	N42°W	36.40 feet
Steel sign post		Southwest	1.00 feet

3. Southeast Section Corner.

Corner position is restored at proportionate distance and on line between Quarter Corners to the North and South.

Corner references:

R. Pine	11"	N18°E	100.95 feet
R. Pine	10"	S20°E	77.13 feet
Maple (E. Fork)	5"	S28°W	120.62 feet
Spruce	8"	N20°W	107.38 feet

4. South Quarter Corner.

Corner position is restored at midpoint and on line between Section Corners to the East and West.

Corner references:

Maple	16"	N13°E	87.09 feet
Maple	12"	N45°W	114.90 feet
Steel sign post		North	16.00 feet

5. Southwest Section Corner.

Corner position is restored by double proportionate measurements.

Corner references:

Maple	7"	N41°E	23.20 feet
Y. Birch	14"	S27°E	8.90 feet
Maple	7"	S69°W	22.90 feet
Maple	7"	N09°W	9.09 feet
Steel sign post		Northwest	0.75 feet

Stock No. 26273

T40N - R13E SECTION 1

sheet 3 of 4

6. West Quarter Corner.

Corner position restored at midpoint and on line between the Southwest and Northwest Closing Section Corner.

Corner references:

Spruce	7"	S08°E	5.65 feet
Spruce	5"	S86°W	4.36 feet
Steel sign post		Northeast	1.50 feet

7. Closing Northwest Section Corner.

Corner position is restored at proportionate distance and on line between the Standard Section Corner common to Sections 35 and 36 T41N R13E, and the Standard South Quarter Corner of Section 36 T41N R13E.

Corner references:

Spruce	3"	S53°E	19.63 feet
Tamarack	4"	S59°W	55.83 feet
Spruce	5"	N46°W	38.80 feet
Steel sign post		North	1.00 feet

8. Closing North Quarter Corner.

Corner position is restored at proportionate distance and on line between the Standard South Quarter Corner of Section 36 T41N R13E, and the Standard Section Corner common to Sections 36 T41N R13E and 32 T41N R14E.

Corner references:

Y. Birch	6"	S20°E	31.16 feet
Maple	5"	S63°W	24.04 feet
Steel sign post		North	1.00 feet

CORNERS ESTABLISHED1. West Closing Sixteenth Corner between Section 1 T40N R13E and Section 36 T41N R13E.

Corner position is established at midpoint between the Closing Northwest Section Corner and the Closing North Quarter Corner, and on line between the Standard South Quarter Corner of Section 36 T41N R13E and the Standard Southeast Section Corner of Section 36 T41N R13E.

Corner references:

Tamarack	10"	N39°E	18.94 feet
B. Spruce	6"	N63°W	15.50 feet
Steel sign post		North	0.75 feet

2. Center-West Sixteenth Corner.

Corner position is established at midpoint and on line between the Center-Quarter and west Quarter Corners.

Corner references:

Maple	7"	N37°E	22.17 feet
Maple	8"	S42°E	9.70 feet
Steel sign post		Southeast	0.75 feet

Stock No. 26273

T40N - R13E SECTION 1

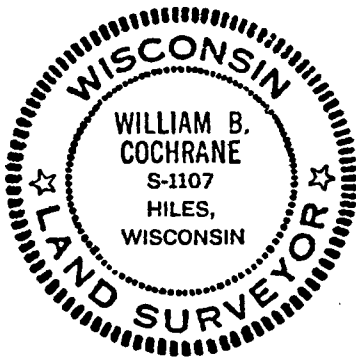
sheet 4 of 4

SURVEYOR'S AFFIDAVIT

State of Wisconsin)
County of Forest)^{ss}

I William B. Cochrane, Land Surveyor, U.S. Forest Service, and a registered land Surveyor in the State of Wisconsin, hereby certify that I have Surveyed and subdivided Section 1 Township 40 North, Range 13 East, Fourth Principal Meridian, State of Wisconsin.

The plat map and survey notes herewith are a correct representation of the land surveyed and divided. I have surveyed and subdivided said section in accordance with the rules for the survey of the public lands and with the statutes of the State of Wisconsin.

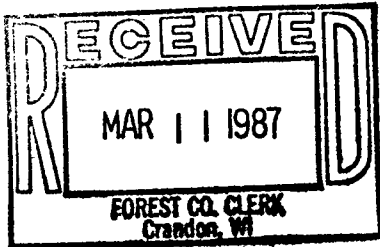


William B. Cochrane

Land Surveyor, U.S. Forest Service
R.L.S. State of Wisconsin
Certificate S-1107

Date of Survey: 1985

Survey Requested by: *Edward Decker* 3-9-87
District Ranger Date



Dora C. James
Forest Co. Clerk