

Stock No. 26273

FOREST CO SURVEYOR

FILE # 401313-19920928

DATE \_\_\_\_\_ BY \_\_\_\_\_

PLAT OF SURVEY FOR CERTIFIED LAND CORNER

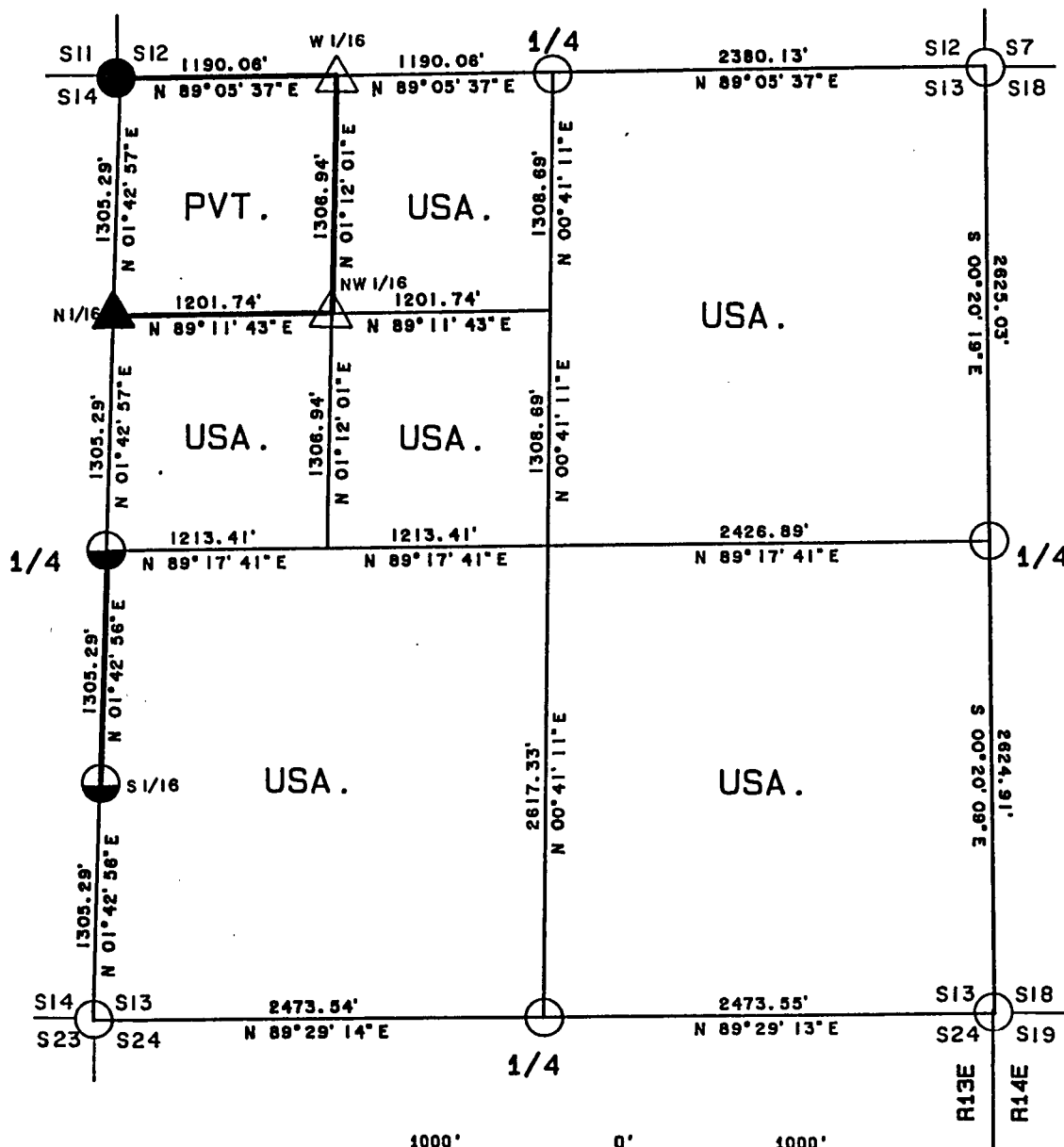
Page 1 Of 4

RESTORATION AND ESTABLISHMENT

BEING THE CORNERS FOR THE NW 1/4 OF THE NW 1/4,  
AND THE CORNERS ON THE PERIMETER OF THE SECTION.

SECTION 13, TOWNSHIP 40 NORTH, RANGE 13 EAST.







COUNTY OF FOREST, STATE OF WISCONSIN.



1000' 0' 1000'

GRAPHIC SCALE - 1" = 1000'

LEGEND

-  2 1/2 INCH DIAMETER GALVANIZED IRON PIPE MONUMENT WITH BRASS CAP.
-  1 INCH DIAMETER ALUMINUM PIPE MONUMENT 36 INCHES LONG WITH AN ALUMINUM CAP.
-  1 INCH DIAMETER ALUMINUM PIPE MONUMENT 60 INCHES LONG WITH AN ALUMINUM CAP.
-  2 1/2 INCH DIAMETER ALUMINUM PIPE MONUMENT 36 INCHES LONG WITH AN ALUMINUM CAP.
-  2 1/2 INCH DIAMETER ALUMINUM PIPE MONUMENT 60 INCHES LONG WITH AN ALUMINUM CAP.
-  BOUNDARY LINE MARKED TO FOREST SERVICE STANDARD

Stock No. 26273

T40N R13E - SECTION 13

Page 2 of 4

SURVEY NOTES

This survey was made by the U.S. Department of Agriculture, Forest Service for the purpose of recovering, restoring, establishing, marking, and perpetuating the corners and boundary line of U.S. Government land on the perimeter and within Section 13, Township 40 North, Range 13 East, Fourth Principal Meridian, Forest County, State of Wisconsin as shown on the plat map herewith.

The Original Government Sub-division of this township was done in 1865 by William E. Daugherty.

The U.S. Government land within Section 13 was acquired in 1935 and 1939.

The bearings between corner positions are referenced to the East line of Section 25 as previously surveyed. No curvature corrections have been applied to the bearings in Section 13. The accuracy of this survey exceeds the State of Wisconsin requirement for closure of 1 part in 3000. Corners recovered or established by this survey are marked as described in the map legend. Each monumented corner is referenced to blazed, scribed, painted and tagged bearing trees. Tie bearings to the bearing trees are magnetic and are not corrected for declination.

The field notes and a copy of the plat of survey are on file in the Forest Service Supervisor's Office at Rhinelander, Wisconsin and the District Ranger's Office at Florence, Wisconsin.

CORNERS RECOVERED AND RESTORED1. Northeast Section Corner

Corner position restored by proportionate measurement between the East Quarter Corner of Section 12 and the Southeast Section Corner of Section 24 by Gary Pisoni, RLS under contract with the U.S. Forest Service. Corner documentation is recorded on a U.S. Public Land Survey Monument Record filed in the Forest County Registrar of Deeds Office as Document No. 140466.

## 1989 Corner References Recovered:

Sugar Maple	11"	N 39° E	18.61 feet
Sugar Maple	10"	S 23° E	21.75 feet
Sugar Maple	11"	S 49° W	3.80 feet
Sugar Maple	7"	N 24° W	18.60 feet
Steel Sign Post		S 87° E	0.80 feet

2. East Quarter Corner

Corner position restored at midpoint on line between the Northeast and Southeast section corners by Gary Pisoni, RLS under contract with the U.S. Forest Service. Corner documentation is recorded on a U.S. Public Land Survey Monument Record filed in the Forest County Registrar of Deeds Office as Document No. 140481.

## 1989 Corner References Recovered:

Hemlock	14"	North	40.18 feet
Sugar Maple	8"	N 41° E	41.04 feet
Sugar Maple	8"	S 52° E	21.45 feet
Sugar Maple	11"	S 17° W	30.69 feet
Steel Sign Post		S 68° W	0.80 feet

3. Southeast Section Corner

Corner position restored by proportionate measurement between the East quarter corner of section 12 and the Southeast section corner of section 24 by Gary Pisoni, RLS under contract with the U.S. Forest Service. Corner documentation is recorded on a U.S. Public Land Survey Monument Record filed in the Forest County Registrar of Deeds Office as Document No. 140473.

## 1989 Corner References Recovered:

Sugar Maple	7"	S 15° E	46.83 feet
Sugar Maple	9"	S 84° W	23.41 feet
Sugar Maple	6"	N 55° W	17.69 feet
Steel sign post		North	0.83 feet

Stock No. 26273

T40N R13E - SECTION 13

Page 3 of 4

4. South Quarter Corner

Corner position restored at midpoint and on line between the Northwest and the Northeast section corners.

## Corner References:

Black Ash	7"	S 52° E	8.97 feet
Spruce	9"	S 26° W	9.12 feet
Steel sign post		Southeast	0.50 feet

5. Southwest Section Corner

Corner restored at double proportionate measurement between the Southwest section corner of section 14, the Northwest section corner of section 13, the Southeast section corner of section 13 and the West quarter corner of section 24.

## Corner References:

Maple	5"	N 67° E	18.68 feet
Maple	4"	S 78° E	36.40 feet
Maple	7"	S 9° W	13.05 feet
Maple	12"	N 61° W	25.56 feet
Steel sign post		Southeast	1.00 feet

6. West Quarter Corner

Corner position restored at midpoint and on line between the Northwest and the Southwest section corners.

## Corner References:

Tamarack	10"	N 41° E	10.99 feet
Tamarack	7"	S 44° W	13.77 feet
Steel Sign Post		West	0.75 feet

7. Northwest Section Corner

Corner position restored in 1973 by Jean Resvick, RLS with the U.S. Forest Service from original corner evidence. Corner documentation is recorded on a Certified Land Corner Restoration Certificate filed in the Forest County Registrar of Deeds Office as Document No. 102386.

## 1973 Corner References Recovered:

Sugar	6"	N 22° E	5.87 feet
Sugar	Stump	N 56° W	12.22 feet
Northeast Corner of a Cabin		S 51° W	65.10 feet

## New Corner References:

Maple	10"	N 37° W	33.55 feet
Steel Sign Post		Northwest	1.00 feet

8. North Quarter Corner

Corner position restored at midpoint and on line between the Northwest and the Northeast section corners.

## Corner References:

Cedar	11"	S 60° W	14.20 feet
Cedar	12"	N 50° W	21.41 feet
Steel sign post		Northwest	0.50 feet

CORNERS ESTABLISHED1. West Sixteenth Corner Between Sections 12 and 13

Corner position established at midpoint and on line between the Northwest section corner and the North quarter corner of Section 13.

## Corner References:

Balsam	7"	N 8° E	15.22 feet
Balsam	7"	N 48° W	9.00 feet
Steel sign post		North	1.00 feet

Stock No. 26273

T40N R13E - SECTION 13

Page 4 of 4

2. North Sixteenth Corner Between Sections 13 and 14

Corner position established at midpoint and on line between the West quarter corner and the Northwest section corner.

## Corner References:

Black Spruce	4"	N 62° E	5.36 feet
Black Spruce	2"	N 77° W	10.48 feet
Steel sign Post		South along side the monument	

3. Northwest Sixteenth Corner

Corner position established at the intersection of straight lines between opposing sixteenth corner positions on the perimeter of the Northwest quarter of the section.

## Corner References:

Aspen	11"	South	18.34 feet
Aspen	11"	S 83° W	24.59 feet
Steel sign post		Northwest	0.75 feet

4. South Sixteenth Between Sections 13 and 14

Corner position established at midpoint and on line between the Southwest section corner and the West quarter corner.

## Corner References:

No living bearing trees within 400 feet of the corner.			
Steel sign post		East	1.00 feet

SURVEYOR'S AFFIDAVIT

State of Wisconsin)

)ss

County of Forest )

I, William B. Cochrane, Land Surveyor, U.S.D.A. Forest Service and a Registered Land Surveyor in the State of Wisconsin, hereby certify that I have surveyed and sub-divided Section 13, Township 40 North Range 13 East, Fourth Principal Meridian, Forest County, State of Wisconsin.

The plat map and survey notes herewith are a correct representation of the land surveyed and sub-divided. I have surveyed and sub-divided said section in accordance with the rules for the Survey of Public Lands and the Statutes of the State of Wisconsin.

*William B. Cochrane*  
 Land Surveyor, U.S.D.A. Forest Service  
 R.L.S. State of Wisconsin  
 Certificate S-1107



Date of Survey: 1991

Survey requested by:

*Cam Burke*  
 District Ranger

9/28/92

Date

