

Stock No. 26273

FOREST CO SURVEYOR
FILE # 401325-19920928
DATE _____ BY _____

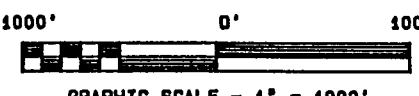
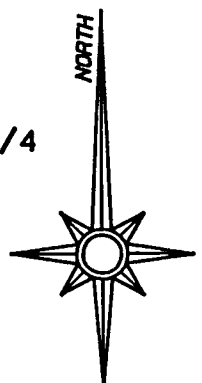
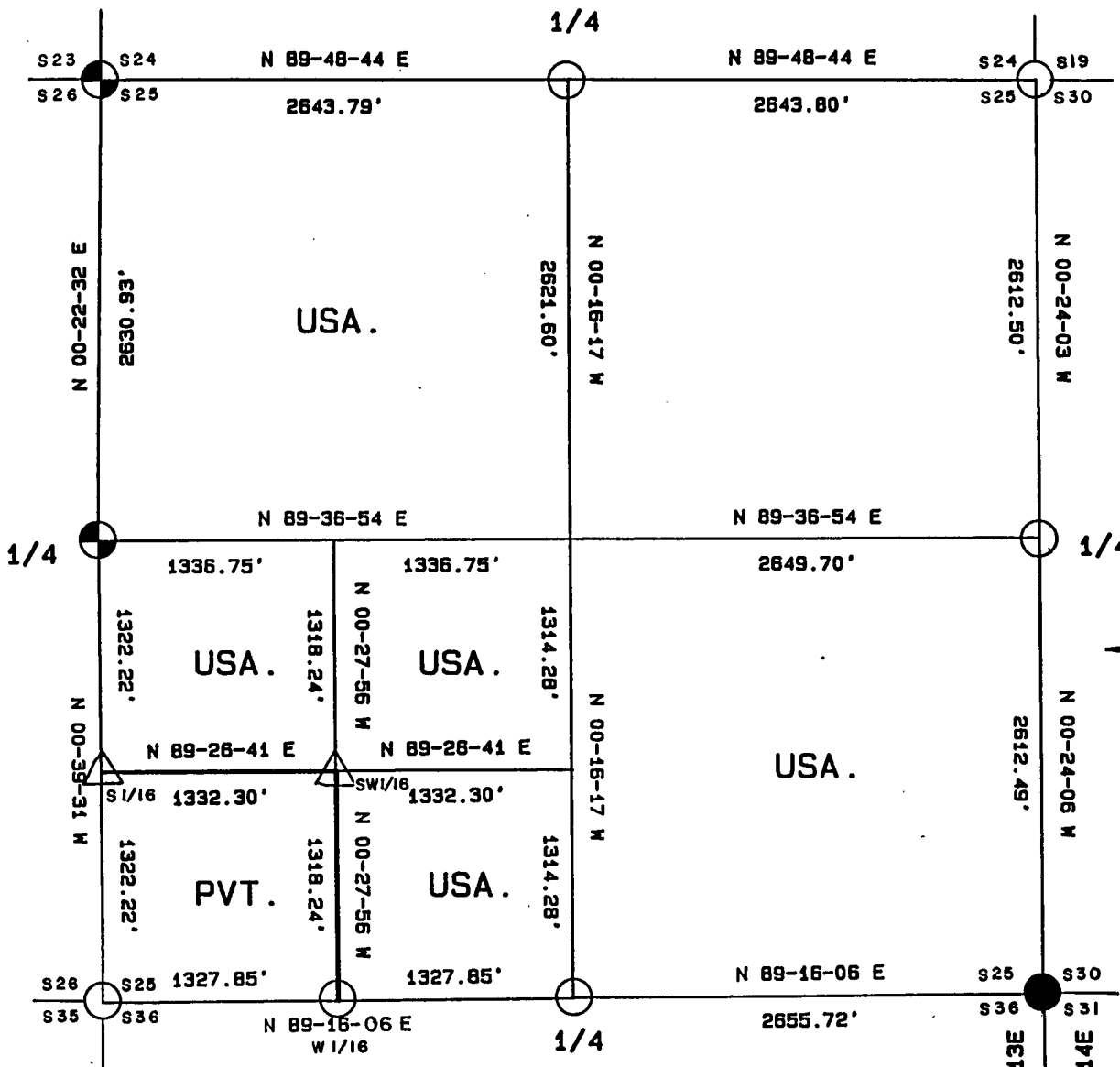
PLAT OF SURVEY FOR CERTIFIED LAND CORNER

RESTORATION AND ESTABLISHMENT






BEING THE CORNERS FOR THE SW 1/4 OF THE SW 1/4,
AND THE CORNERS ON THE PERIMETER OF THE SECTION

SECTION 25, TOWNSHIP 40 NORTH, RANGE 13 EAST

COUNTY OF FOREST, STATE OF WISCONSIN.



LEGEND

-  2 1/2 INCH DIAMETER GALVANIZED IRON PIPE MONUMENT WITH BRASS CAP.
-  1 INCH DIAMETER ALUMINUM PIPE MONUMENT 36 INCHES LONG WITH AN ALUMINUM CAP.
-  2 1/2 INCH DIAMETER ALUMINUM PIPE MONUMENT 36 INCHES LONG WITH AN ALUMINUM CAP.
-  RAIL ROAD SPIKE IN ROAD SURFACE REFERENCED BY AN ALUMINUM PIPE MONUMENT
-  BOUNDARY LINE MARKED TO FOREST SERVICE STANDARD

Stock No. 26273

T40N R13E - SECTION 25

SURVEY NOTES

This survey was made by the U.S. Department of Agriculture, Forest Service for the purpose of recovering, restoring, establishing, marking, and perpetuating the corners and boundary line of U.S. Government land on the perimeter and within Section 25, Township 40 North, Range 13 East, Fourth Principal Meridian, Forest County, State of Wisconsin as shown on the plat map herewith.

The Original Government Sub-division of this township was done in 1865 by William E. Daugherty.

The U.S. Government land within Section 25 was acquired in 1935.

The bearings between corner positions are referenced to the East line of Section 25 as previously surveyed. No curvature corrections have been applied to the bearings in Section 25. The accuracy of this survey exceeds the State of Wisconsin requirement for closure of 1 part in 3000. Corners recovered or established by this survey are marked as described in the map legend. Each monumented corner is referenced to blazed, scribed, painted and tagged bearing trees. Tie bearings to the bearing trees are magnetic and are not corrected for declination.

The field notes and a copy of the plat of survey are on file in the Forest Service Supervisor's Office at Rhinelander, Wisconsin and the District Ranger's Office at Florence, Wisconsin.

CORNERS RECOVERED AND RESTORED

1. Northeast Section Corner

Corner position recovered and restored in 1989 by Gary Pisoni, RLS under contract with the U.S. Forest Service. Corner documentation is recorded on a U.S. Public Land Survey Monument Record filed in the Forest County Registrar of Deeds Office as Document No. 140485.

1989 Corner References Recovered:

Ash	5"	N 19° E	15.58 feet
Ash	5"	S 88° E	10.48 feet
Ash	8"	S 35° E	16.18 feet
Steel Sign Post		S 65° W	0.72 feet

2. East Quarter Corner

Corner position restored by single proportionate measurement by Gary Pisoni, RLS under contract with the U.S. Forest Service. Corner documentation is recorded on a U.S. Public Land Survey Monument Record filed in the Forest County Registrar of Deeds Office as Document No. 140490.

1989 Corner References Recovered:

Sugar Maple	10"	N 53° E	16.11 feet
Elm	3"	N 55° W	10.90 feet
Ash	4"	N 1° W	29.48 feet
Iron Pipe	3/4"	S 27° 05' W	19.45 feet
Steel Sign Post		S 65° W	0.93 feet

3. Southeast Section Corner

Corner position recovered and restored in 1979 by Jean Resvick, RLS with the U.S. Forest Service. Corner documentation is recorded on a Certified Land Corner Restoration Certificate filed in the Forest County Registrar of Deeds Office as Document No. 118085.

1979 Corner References Recovered:

Sugar	8"	N 48° E	48.45 feet
Sugar	8"	S 49° E	48.84 feet
Black Ash	8"	S 43° W	37.63 feet
Red Maple	7"	N 51° W	23.65 feet
Steel sign post		Northwest	0.50 feet

Stock No. 26273

T40N R13E - SECTION 25

/ Page 3 of 4

4. South Quarter Corner

Corner position was restored at midpoint and on line between the Southwest and Southeast section corners.

Corner References:

Aspen	9"	N 66° E	9.26 feet
Aspen	5"	N 60° W	11.25 feet
Steel sign post		West	0.50 feet

5. Southwest Section Corner

Corner position restored from acceptance of an old cedar fence corner with a Forest Service location tag nailed to the post. This position agrees with local usage and the improvements near this corner.

Corner References:

Spruce	12"	N 65° E	25.82 feet
Aspen	6"	S 72° E	19.98 feet
Aspen	9"	N 4° W	12.40 feet
No available bearing tree in the Southwest quadrant.			
Local corner 2" diam. Iron Pipe		S 89° 51' E	160.95 feet
Steel sign post		Northeast	1.00 feet

6. West Quarter Corner

Corner position restored in the center of Highway 55 at the intersection of the center lines of Highway 55 and an old road that runs East. This information is documented on Forest Service Form 874 dated 1934 and a survey of section 26 dated 1940. This position is accepted as the best available evidence of the corner position.

Corner References:

Spruce	17"	N 41° E	71.77 feet
W. Pine	17"	S 66° E	78.41 feet
Reference Corner		West	33.00 feet
Steel Sign Post		West	33.50 feet

7. Northwest Section Corner

Corner position restored in the center of Highway 55 and proportionate distances from a 1940 survey. This position is also in harmony with the description for the parcel in the NW 1/4 of the SW 1/4 of section 24.

Corner References:

Maple	6"	N 42° E	61.65 feet
Spruce	9"	S 52° W	59.18 feet
Spruce	11"	N 56° W	61.77 feet
No available bearing tree in the Southeast quadrant.			
Reference Corner		West	33.00 feet
Steel Sign Post		West	33.50 feet

8. North Quarter Corner

Corner position restored at midpoint and on line between the Northwest and the Northeast section corners.

Corner References:

Aspen	3"	N 62° E	7.84 feet
Aspen	7"	N 2° W	10.31 feet
Steel sign post		Southwest	0.75 feet

CORNERS ESTABLISHED1. South Sixteenth Corner Between Sections 25 and 26

Corner position established at midpoint and on line between the Southwest section corner and the West quarter corner of Section 25.

Corner References:

Maple	8"	S 86° W	66.36 feet
Maple	7"	N 58° W	68.75 feet
Center Line of Highway 55		West	21.50 feet
Steel sign post		East	1.70 feet

Stock No. 26273

T40N R13E - SECTION 25

2. Southwest Sixteenth Corner

Corner position established at the intersection of the straight lines between opposing sixteenth corner positions on the perimeter of the Southwest Quarter of Section 25.

Corner References:

Maple	6"	N 26° E	12.47 feet
Maple	5"	S 56° E	17.79 feet
Steel sign Post		Northeast	1.75 feet

3. West Sixteenth Corner Between Section 25 and 36

Corner position established at midpoint and on line between the Southwest section corner and the South quarter corner of Section 25.

Corner References:

Aspen	11"	N 12° E	24.05 feet
Aspen	12"	S 47° E	12.85 feet
Steel sign post		East	0.50 feet

SURVEYOR'S AFFIDAVIT

State of Wisconsin)
)ss
 County of Forest)

I, William B. Cochrane, Land Surveyor, U.S.D.A. Forest Service and a Registered Land Surveyor in the State of Wisconsin, hereby certify that I have surveyed and sub-divided Section 25, Township 40 North Range 13 East, Fourth Principal Meridian, Forest County, State of Wisconsin.

The plat map and survey notes herewith are a correct representation of the land surveyed and sub-divided. I have surveyed and sub-divided said section in accordance with the rules for the Survey of Public Lands and the Statutes of the State of Wisconsin.

William B. Cochrane

Land Surveyor, U.S.D.A. Forest Service
 R.L.S. State of Wisconsin
 Certificate S-1107



Date of Survey: 1991

Survey requested by: *Sam Bark*
 District Ranger

9/28/92
 Date

