

Stock No. 26273

FOREST CO SURVEYOR

FILE # 401406-19870311

DATE _____ BY _____

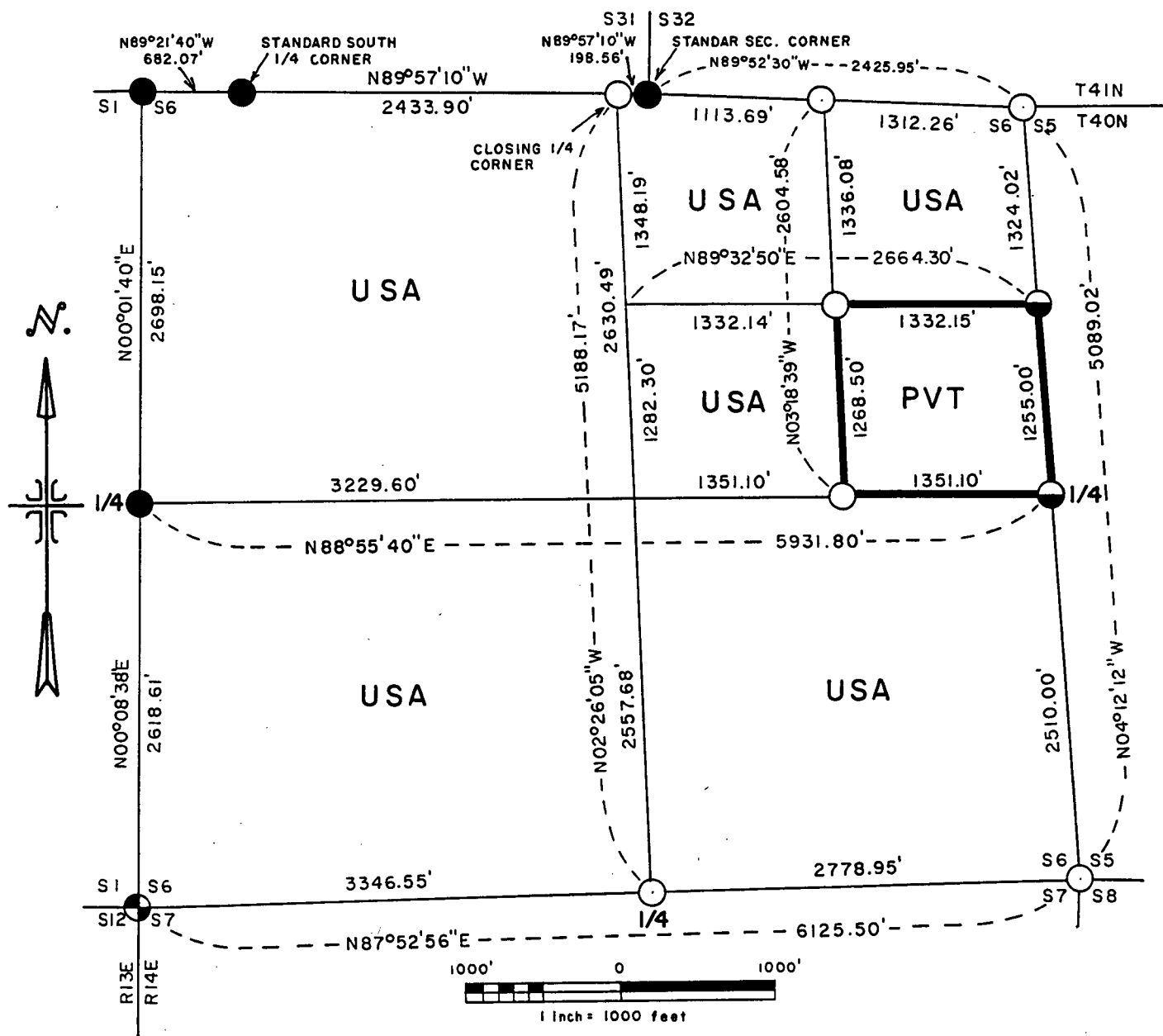
T40N - R14E, SECTION 6

sheet 1 of 4

PLAT OF SURVEY FOR CERTIFIED LAND CORNER RESTORATION AND ESTABLISHMENT

BEING THE CORNERS FOR THE $W\frac{1}{2}$ OF THE $NE\frac{1}{4}$, THE $NE\frac{1}{4}$ OF THE $NE\frac{1}{4}$
 AND THE CORNERS ON THE PERIMETER OF THE SECTION

SECTION 6 TOWNSHIP 40 NORTH, RANGE 14 EAST
 FOURTH PRINCIPAL MERIDIAN, FOREST COUNTY, STATE OF WISCONSIN



LEGEND

- 2½ inch diameter aluminum pipe monument, 36 inches long with an aluminum cap.
- ◐ 2½ inch diameter aluminum pipe monument, 60 inches long with an aluminum cap.
- ⊕ Railroad spike in blacktop.
- G.L.O. dependent resurvey monument.
- boundary line marked to Forest Service Standards.

Stock No. 26273

T40N - R14E SECTION 6

SURVEY NOTES

sheet 2 of 4

This survey was made by the U.S. Department of Agriculture, Forest Service, for the purpose of recovering, restoring, establishing, marking, and perpetuating the corners and boundary lines of U.S. Government land on the perimeter and within Section 6 Township 40 North, Range 14 East, Fourth Principal Meridian, Forest County, State of Wisconsin as shown on the plat map herewith.

The U.S. Government land within Section 6 was acquired in 1935 and 1936.

The original government subdivision survey of this township was made in 1865.

The field notes of this survey and a copy of the plat of survey are on file in the Forest Service Supervisor's Office at Rhinelander, Wisconsin.

CORNERS RECOVERED AND RESTORED1. Closing Northeast Section Corner.

Corner position is restored at proportionate distance and on line between the Standard Section Corner common to Sections 31 and 32 and the Standard South Quarter Corner of Section 32.

Corner references:

Spruce	6"	N63°E	22.21 feet
Spruce	7"	N62°W	12.45 feet
Steel sign post		Northeast	1.00 feet

2. East Quarter Corner.

Corner position is restored at proportionate distance and on line between the Northeast and Southeast Section corners.

Corner references:

Cedar	7"	N60°E	12.26 feet
Cedar	10"	S44°E	30.03 feet
Steel sign post		Southwest	1.00 feet

3. Southeast Section Corner.

Corner position is recovered as restored by Jean Resvick in 1972 from ties to the 1924 Dependent Resurvey record measurements to center line of graded road.

Corner references:

Reference Monument 2 inch by 5 foot with brass cap S22°04'W 85.00' from which.

R. Pine	9"	N80°W	16.80 feet
R. Pine	8"	S12°W	26.90 feet
Steel sign post		West	1.00 feet

Reference Monument 2 inch by 5 foot with brass cap S22°04'W 135.00 feet from which.

R. Pine	7"	N07°W	4.40 feet
R. Pine	7"	S69°W	11.80 feet
Steel sign post		West	1.00 feet

4. South Quarter Corner.

Corner position is restored at midpoint and on line between the Southeast and Southwest Section Corners.

Corner references:

Maple	5"	N68°E	10.94 feet
Maple	6"	N16°W	37.80 feet
Steel sign post		Northwest	1.00 feet
Stones placed around monument.			

5. Southwest Section corner.

Corner position is restored at proportionate distance and on line between the Quarter Corners to the North and South on Range line.

Corner references:

R. Pine	11"	N18°E	100.95 feet
R. Pine	10"	S20°E	75.13 feet
Maple (North fork)	5"	S28°W	120.62 feet
Spruce	8"	N20°W	107.38 feet

Stock No. 26273

T40N - R14E SECTION 6

sheet 3 of 4

6. West Quarter Corner.

Corner position recovered as restored by Dependent Resurvey of 1945.

No remains of the 1945 references were recovered.

New Corner references:

Maple	5"	S11°W	27.10 feet
Maple	5"	N42°W	36.40 feet
Steel sign post		Southwest	1.00 feet

7. Closing Northwest Section Corner.

Corner position recovered as restored by Dependent Resurvey in 1945.

Corner references recovered:

Aspen (stump)	4"	S55°E	48½ lks
Elm (stump)	12"	S10°W	129½ lks

Corner references:

Recent clear cut has removed all available bearing trees.

Steel sign post	North	1.00 feet
-----------------	-------	-----------

8. Closing North Quarter.

Corner position is computed at midpoint between the Northwest and Northeast Section Corners. The actual monumented corner position was located by extending the North-South Quarter line to intersect the Fourth Standard Parallel.

Corner references:

Cedar	12"	N48°E	33.39 feet
Y. Birch	14"	S82°E	33.95 feet
Steel sign post		North	0.50 feet

CORNERS ESTABLISHED1. Northeast Sixteenth Corner.

Corner position established at the intersection of the straight lines between opposing Sixteenth Corner positions on the perimeter of the Northeast Quarter of the Section.

Corner references:

W. Birch	6"	N42°E	4.52 feet
Spruce	8"	N53°W	28.05 feet
Steel sign post		North	1.00 feet

2. North Sixteenth Corner between Sections 5 and 6.

Corner position established at proportionate distance and on line between the East Quarter Corner and the Closing Northeast Section Corner.

Corner references:

Aspen	10"	S89°W	177.18 feet
W. Birch	10"	N86°W	158.77 feet
Steel sign post		North	1.00 feet

3. Center-east Sixteenth Corner.

Corner position established at midpoint and on line between the Center-Quarter and the East Quarter Corner.

Corner references:

R. Pine	12"	N09°E	14.65 feet
R. Pine	14"	N44°W	27.24 feet
Steel sign post		Southeast	1.00 feet

Stock No. 26273

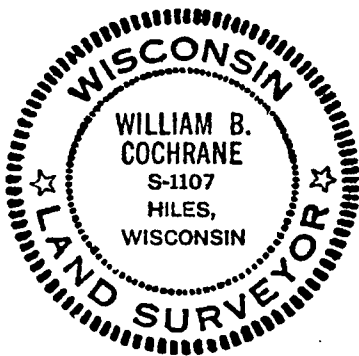
T40N - R14E SECTION 6

sheet 4 of 4

SURVEYOR'S AFFIDAVITState of Wisconsin)
County of Forest)^{ss}

I William B. Cochrane, Land Surveyor, U.S. Forest Service, and a registered land Surveyor in the State of Wisconsin, hereby certify that I have Surveyed and subdivided Section 6 Township 40 North, Range 14 East, Fourth Principal Meridian, State of Wisconsin.

The plat map and survey notes herewith are a correct representation of the land surveyed and divided. I have surveyed and subdivided said section in accordance with the rules for the survey of the public lands and with the statutes of the State of Wisconsin.



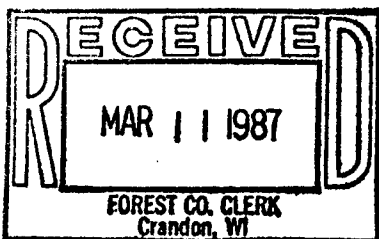
William B. Cochrane
Land Surveyor, U.S. Forest Service
R.L.S. State of Wisconsin
Certificate S-1107

Date of Survey: 1985

Survey Requested by:

Edward R. Raper
District Ranger

3-9-87
Date



Dora C. James
Forest Co. Clerk