

Stock No. 26273

FOREST CO SURVEYOR
FILE # 40412-19870311
DATE _____ BY _____

T40N - R14E, SECTION 12

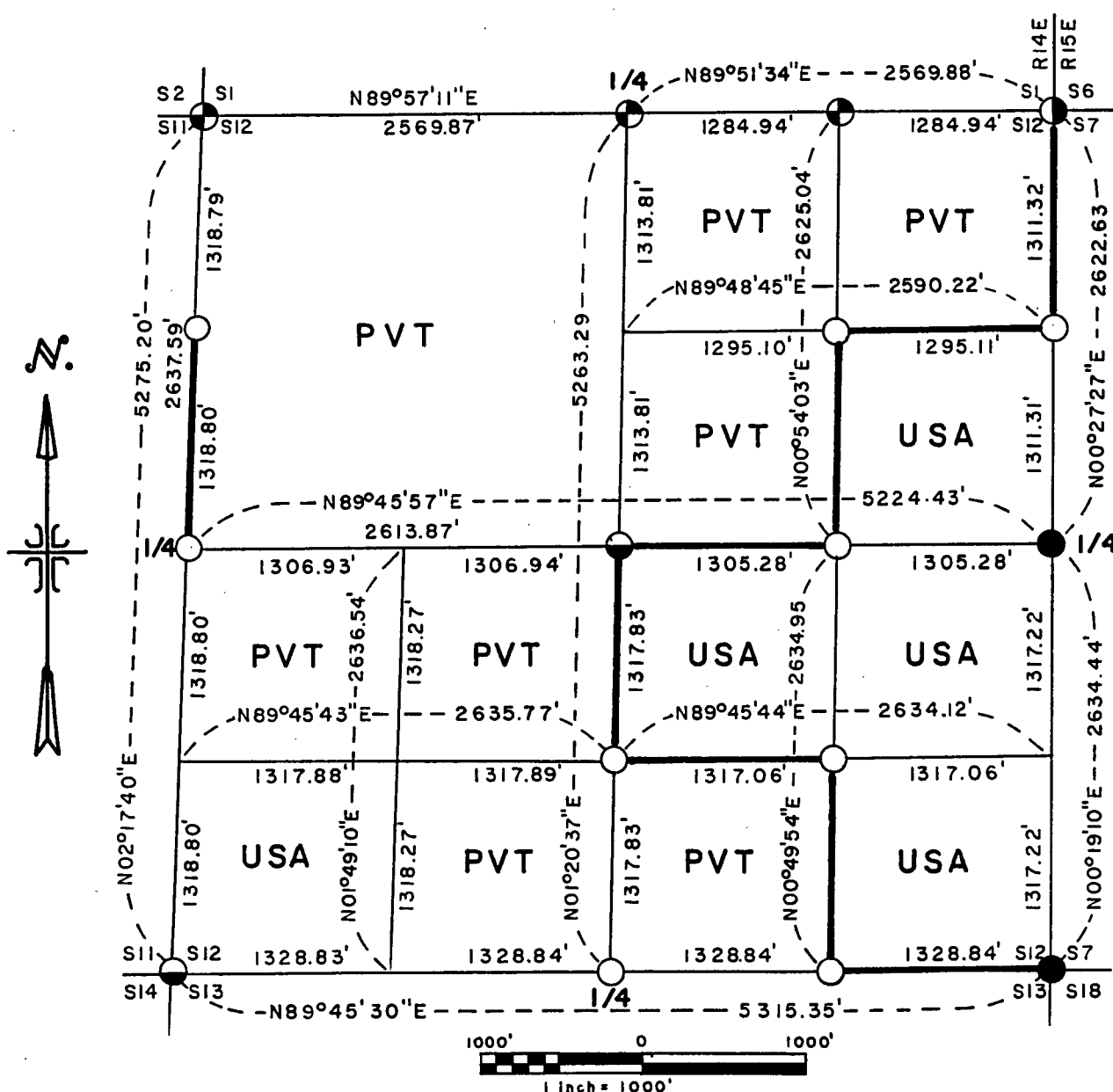
PLAT OF SURVEY FOR CERTIFIED LAND CORNER
RESTORATION AND ESTABLISHMENT

sheet 1 of 4

BEING THE CORNERS FOR THE SE $\frac{1}{4}$ OF THE NE $\frac{1}{4}$, THE N $\frac{1}{2}$ OF THE SE $\frac{1}{4}$,
THE SE $\frac{1}{4}$ OF THE SE $\frac{1}{4}$, AND THE CORNERS ON THE PERIMETER OF THE SECTION

SECTION 12 TOWNSHIP 40 NORTH, RANGE 14 EAST

FOURTH PRINCIPAL MERIDIAN, FOREST COUNTY, STATE OF WISCONSIN



LEGEND

- 2½ inch diameter aluminum pipe monument, 36 inches long with an aluminum cap.
- ◐ 2½ inch diameter aluminum pipe monument, 60 inches long with and aluminum cap.
- Aluminum pipe monument set by Genisot and Associates in 1979.
- ⊕ Railroad spike in blacktop and witnessed by an aluminum pipe monument.
- 2½ inch diameter galvanized pipe monument, from 1945 Dependent Resurvey.
- Boundary line marked to Forest Service Standards.

Stock No. 26273

T40N - R14E, SECTION 12

SURVEY NOTES

sheet 2 of 4

This survey was made by the U.S. Department of Agriculture, Forest Service, for the purpose of recovering, restoring, establishing, marking, and perpetuating the corners and boundary lines of U.S. Government land on the perimeter and within Section 12 Township 40 North, Range 14 East, Fourth Principal Meridian, Forest County, State of Wisconsin as shown on the plat map herewith.

The U.S. Government land within Section 12 was acquired in 1935 and 1946.

The original government subdivision survey of this township was made in 1865.

The field notes of this survey and a copy of the plat of survey are on file in the Forest Service Supervisor's Office at Rhinelander, Wisconsin.

CORNERS RECOVERED AND RESTORED1. Northeast Section Corner.

Corner position recovered as restored by Genisot and Associates in 1980.

Corner references recovered:

Tamarack	13"	N40°E	82.80 feet
Cedar	8"	S56°E	72.00 feet
Cedar	8"	S28°W	55.70 feet
W. Birch	6"	N10°W	68.00 feet

2. East Quarter Corner.

Corner position recovered as restored by Jean Resvick in 1977 as being a 1945 Dependent Resurvey monument.

Corner references recovered:

Balsam	7"	N43°E	32.01 feet
Red Pine	8"	S89°W	66.49 feet
Steel sign post		North	1.00 feet

3. Southeast Section Corner.

Corner position recovered as restored by Jean Resvick in 1976 as being a 1945 Dependent Resurvey monument.

Corner references recovered:

Maple	7"	N40°E	15.95 feet
Maple	7"	S62°E	62.09 feet
Maple	8"	S76°W	52.31 feet
Maple	7"	N30°W	26.94 feet
Steel sign post		North	1.00 feet

4. South Quarter Corner.

Corner position restored at midpoint and on line between the Southeast and Southwest Section Corners

Corner references:

Maple	6"	N01°E	115.60 feet
Twin Maple	6"	N09°W	124.75 feet
Steel sign post		North	1.00 feet

5. Southwest Section Corner.

Corner position recovered as restored by William Cochrane in 1981 from remains of original bearing tree stumps and recovered 4"x4" wood post.

Corner references recovered:

Spruce	6"	S 5°E	54.11 feet
Spruce	6"	S47°W	36.40 feet
Spruce	5"	N30°W	58.46 feet
Steel sign post		North	0.50 feet

Stock No. 26273

T40N - R14E, SECTION 12

sheet 3 of 4

6. West Quarter Corner.

Corner position restored at midpoint and on line between the Southwest Section Corner and the Northwest Section corner.

Corner references:

Aspen	8"	N22°E	3.03 feet
Aspen	15"	S56°E	20.20 feet
Steel sign post		West	1.00 feet

7. Northwest Section Corner.

Corner position restored at the intersection of Highway 70 and Forest road 2454.

Corner references:

Red Pine	18"	N45°E	160.00 feet
W. Corner (aluminum monument)		S33°E	131.30 feet
W. Corner (aluminum monument)		S45°W	139.35 feet
Basswood	9"	N33°W	129.00 feet

8. North Quarter Corner.

Corner position is restored at midpoint and in the center line of Highway 70

Corner references:

Red Pine	13"	N32°E	101.49 feet
W. Corner (aluminum monument)		S32°W	120.79 feet
Red Pine	10"	N22°W	119.61 feet

CORNERS ESTABLISHED1. East Sixteenth Corner between Sections 1 and 12.

Corner position is established at midpoint and on line between the North Quarter Corner and the Northeast Section Corner.

Corner references:

Cabin (SE corner)		N25°E	112.35 feet
Cabin (NE Corner)		S 4°E	77.00 feet
Red Pine	12"	N31°W	118.42 feet

2. Northeast Sixteenth Corner.

Corner position is established at the intersection of the straight lines between opposing Sixteenth Corner positions on the perimeter of the Northeast Quarter of the section.

Corner references:

W. Birch	14"	N 9°E	9.69 feet
Spruce	19"	N66°W	30.99 feet
Steel sign post		Southeast	1.50 feet

3. North Sixteenth Corner between Sections 12 and 7.

Corner position is established at midpoint and on line between the Northeast Section Corner and the East Quarter Corner.

Corner references:

Maple	7"	S 8°W	23.95 feet
Maple	8"	N48°W	21.21 feet
Steel sign post		Northeast	1.00 feet

4 Center Quarter Corner.

Corner position is established at the intersection of the straight lines between opposing Quarter Corners on the perimeter of the section.

Corner references:

Cedar	10"	S30°E	11.10 feet
Tamarack	7"	S18°W	35.19 feet
Steel sign post		Northwest	0.50 feet

Stock No. 26273

T40N - R14E, SECTION 12

sheet 4 of 4

5. Center-East Sixteenth Corner.

Corner position is established at midpoint and on line between the Center Quarter Corner and the East Quarter Corner.

Corner references:

Maple	8"	S85°E	12.32 feet
Maple	10"	S34°W	23.23 feet
Steel sign post		Southeast	0.50 feet

6. Center-South Sixteenth Corner.

Corner position is established at midpoint and on line between the Center Quarter Corner and the South Quarter Corner.

Corner references:

Maple	5"	N40°E	6.83 feet
Maple	10"	S10°E	35.35 feet
Steel sign post		Northeast	0.50 feet

7. Southeast Sixteenth Corner.

Corner position is established at the intersection of the straight lines between opposing Sixteenth Corners on the perimeter of the Southeast Quarter of the Section.

Corner references:

Red Pine	10"	N29°E	28.85 feet
Red Pine	12"	N38°W	19.85 feet
Steel sign post		Northeast	0.50 feet

8. East Sixteenth Corner between Sections 12 and 13.

Corner position is established at midpoint and on line between the South Quarter Corner and the Southeast Section Corner.

Corner references:

Aspen	12"	N22°E	54.71 feet
B. Cherry	8"	N13°W	52.15 feet
Steel sign post		Northeast	1.00 feet
East-West fence		North	27.00 feet

SURVEYOR'S AFFIDAVIT

State of Wisconsin)
County of Forest)^{ss}

I William B. Cochrane, Land Surveyor, U.S. Forest Service, and a registered land Surveyor in the State of Wisconsin, hereby certify that I have Surveyed and subdivided Section 12 Township 40 North, Range 14 East, Fourth Principal Meridian, State of Wisconsin.

The plat map and survey notes herewith are a correct representation of the land surveyed and divided. I have surveyed and subdivided said section in accordance with the rules for the survey of the public lands and with the statutes of the State of Wisconsin.

Survey Requested by: Edward [Signature]

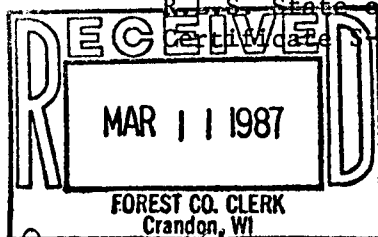
District Ranger

3-9-87

Date



William B. Cochrane
Land Surveyor, U.S. Forest Service
R.L.S., State of Wisconsin
Certificate S-1107



Dora C. James, Forest Co. Clerk