

Stock No. 26273

FOREST CO SURVEYOR

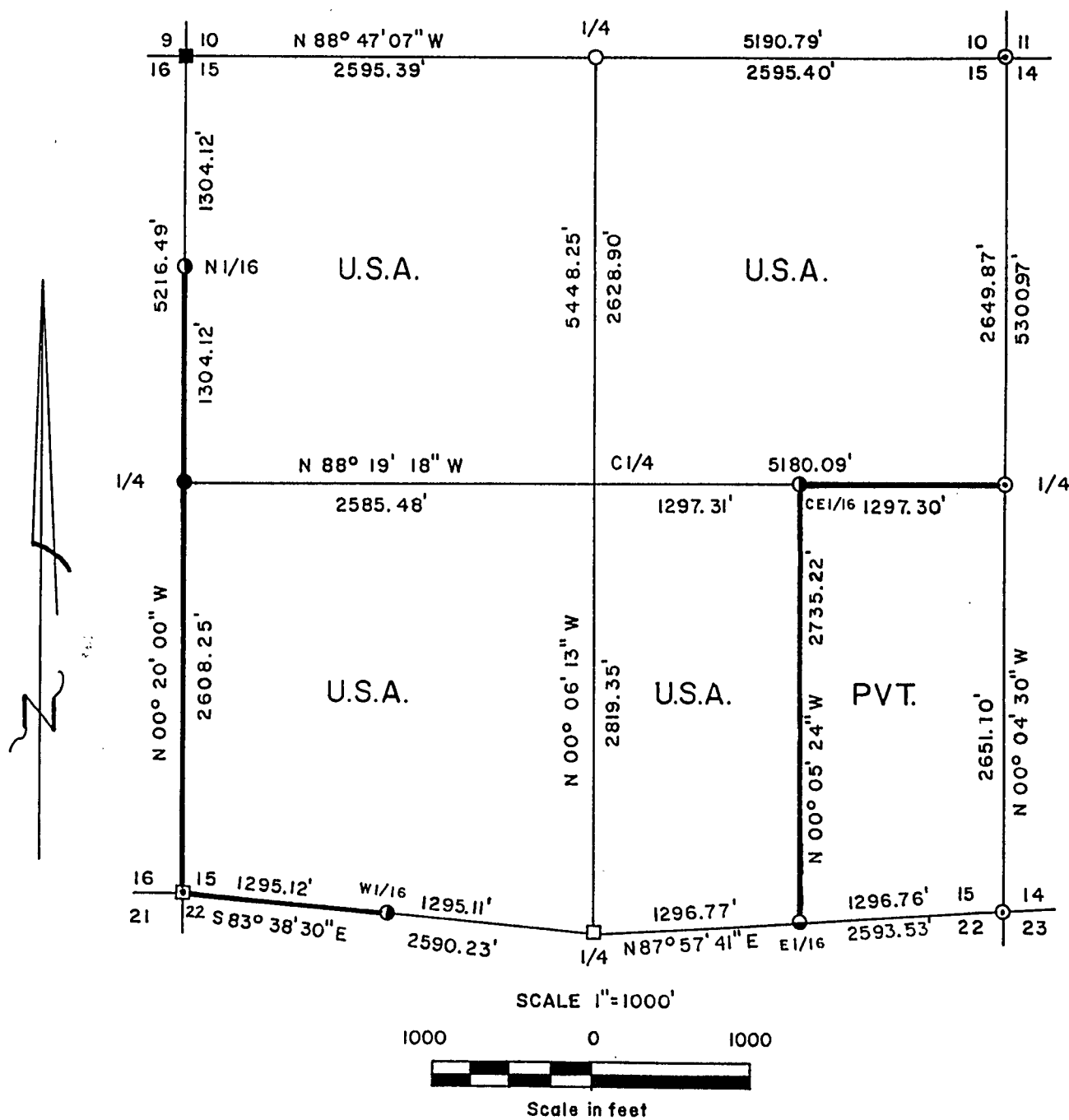
FILE # 401415-19901026

DATE _____ BY _____

PLAT OF SURVEY FOR CERTIFIED LAND CORNER RESTORATION AND ESTABLISHMENT

BEING THE CORNERS FOR THE NE 1/4, W 1/2- SE 1/4, SW 1/4 AND NW 1/4
OF SECTION 15, T.40N. R.14E., FOURTH PRINCIPAL MERIDIAN

COUNTY OF FOREST, STATE OF WISCONSIN



LEGEND

- 2 inch I.D. iron pipe monument with a brass cap set by U.S.F.S.
 - 2½ inch diameter aluminum pipe monument, 36 inches long set by William Cochrane U.S.F.S. in 1984.
 - ⊙ 2½ inch diameter aluminum pipe monument, 36 inches long buried in road with an aluminum cap stamped to identify the corner.
 - 2½ inch diameter aluminum pipe monument, 36 inches long with an aluminum cap
 - ◐ 1 inch diameter aluminum pipe monument, 36 inches long with an aluminum cap
 - ◑ 1 inch diameter aluminum pipe monument, 60 inches long with an aluminum cap
 - ◒ 2½ inch I.D. iron pipe monument with a brass cap set by General Land Office Dependent 1950 resurvey.
 - ◓ 5 inch diameter concrete monument with brass cap and iron post in center set by General Land Office Dependent 1945 resurvey.
 - Boundary line marked to Forest Service standards.
- NOTE: Bearings are true bearings as referenced to the East Sec line of Sec. 16 as determined by solar observation from previous survey of Sec. 16 in 1986 by Gary L. Pisoni R.L.S.

Stock No. 26273

Sheet 2 of 4

SURVEY NOTES

This survey was made by Gary L. Pisoni, a Registered Land Surveyor in the State of Wisconsin, for the U.S.D.A., Forest Service, for the purpose of recovering, restoring, establishing, marking, and perpetuating the corners and boundary lines of U.S. Government Land on the perimeter and within Section 15, Township 40 North, Range 14 East, Fourth Principal Meridian, Forest County, State of Wisconsin, as shown on the plat map herewith.

The Original Government Sub-division of this township was done in 1865 by William E. Daugherty. The corners previously restored by the U.S. Forest Service, the sub-division survey of Section 16 by Gary L. Pisoni RLS in 1986 and 1989, and the 1945 and 1950 GLO Dependent Resurvey marking the perimeter of Section 15 were used as control for the sub-division survey of Section 15.

The bearings between corner positions are true bearings as referenced to the East Section line of Section 16 as determined by solar observation from previous survey of Section 16 in 1986 by Gary L. Pisoni RLS.

The accuracy of this survey exceeds the State requirements of 1 in 3000.

The field notes and a copy of the Plat of Survey are on file in the Forest Supervisor's Office at Rhineland, Wisconsin.

The U.S. Government acquired title to the lands in Section 15 in 1935.

CORNERS RECOVERED AND RESTORED1. Northeast Section Corner

Corner position restored in 1944 by GLO and in 1969 by Jean Resvick R.L.S. with the U.S. Forest Service, and in 1989 by Gary L. Pisoni R.L.S.

1969 Corner References Recovered;

Spruce	10"	N31 E	118.84 feet
Spruce	9"	N39 W	48.35 feet

1989 Corner References:

White Spruce	13"	S52 W	41.35 feet
Sugar Maple	12"	N78 E	26.28 feet

2. East Quarter Corner

Corner position restored in 1944 by GLO and in 1967 by Jean Resvick R.L.S. with the U.S. Forest Service, and in 1989 by Gary L. Pisoni R.L.S.

1944 Corner Reference Recovered;

Witness Corner Monument	East	26.40 feet
-------------------------	------	------------

1989 Corner References:

Red Pine	12"	N20 W	66.41 feet
Spruce	7"	N83 E	31.67 feet
Spruce	7"	S80 E	36.19 feet

Stock No. 26273

Sheet 3 of 4

3. Southeast Section Corner

Corner position restored in 1944 by GLO and in 1967 by Jean Resvick a R.L.S. with the U.S. Forest Service, and in 1989 by Gary L. Pisoni R.L.S.

1944 Corner References Recovered;

Witness Corner Monument	S00 05'15"W	26.40 feet
-------------------------	-------------	------------

1989 Corner References:

Red Pine	9"	N62 W	84.98 feet
Black Cherry	12"	S16 E	79.51 feet
Black Cherry	12"	S04 W	102.24 feet

4. South Quarter Corner

Corner position restored in 1945 by GLO Dependent Resurvey.

No 1945 Corner References Recovered.

New Corner References;

Spruce	9"	N53 E	23.26 feet
Spruce	8"	S64 E	10.42 feet
Spruce	7"	S11 W	8.34 feet
Spruce	7"	N40 W	23.71 feet
Steel sign post		West	0.76 feet

5. Southwest Section Corner

Corner position restored in 1950 by GLO Dependent Resurvey, in 1969 by Jean Resvick R.L.S. with the U.S. Forest Service and in 1986 by Gary Pisoni R.L.S.

1950 Corner References Recovered;

Cedar	13"	S43 30'W	73.30 feet
Poplar	14"	N55 30'W	17.80 feet

1969 Corner References Recovered;

White Spruce	6"	N71 E	13.42 feet
White Birch	8"	S65 E	17.20 feet
Black Spruce	4"	N67 W	19.10 feet

1986 Corner Reference;

Steel Sign Post	North	1.30 feet
-----------------	-------	-----------

6. West Quarter Corner

Corner position restored from Gary Pisoni's 1986 survey of Section 16.

1986 Corner References;

Balsam	10"	S89 E	22.88 feet
Black Cherry	8"	S10 W	63.19 feet
Balsam	9"	N16 W	24.03 feet
Steel sign post		S73 W	1.19 feet

7. Northwest Section Corner

Corner position restored in 1968 by Jean Resvick R.L.S. with the U.S. Forest Service, and in 1986 by Gary Pisoni R.L.S.

1968 Corner References Recovered;

White Birch	9"	S21 00'E	26.37 feet
White Birch	6"	N81 00'W	24.25 feet
Maple	7"	N82 45'E	11.20 feet

1986 Corner References;

Sugar Maple	7"	N26 30'E	29.28 feet
Steel Sign Post		S60 00'W	1.50 feet

8. North Quarter Corner

Corner position restored in 1985 by William Cochran R.L.S. with the U.S. Forest Service.

1985 Corner References;

Balsam	4"	S61 E	13.43 feet
Basswood	16"	S68 W	7.03 feet
Steel Sign Post		NW	1.00 feet

Stock No. 26273

Sheet 4 of 4

CORNERS ESTABLISHED1. East Sixteenth Corner between Sections 15 and 22

Corner position is established at mid-point and on line between the Southeast Section Corner and the South Quarter Corner.

Corner References;

Sugar Maple	10"	S38 W	44.04 feet
Sugar Maple	9"	N47 W	28.19 feet
Steel sign post		South	1.35 feet

2. West Sixteenth Corner between Sections 15 and 22

Corner position is established at mid-point and on line between the Southwest Section Corner and the South Quarter Corner.

Corner References:

Spruce	6"	N68 E	26.86 feet
Spruce	6"	S09 W	97.04 feet
Steel rail		West	0.84 feet
Steel sign post		S05 E	1.07 feet

3. North Sixteenth Corner between Sections 15 and 16

Corner position is established at mid-point and on line between the Northwest Section Corner and the West Quarter Corner.

Corner References;

Black Spruce	2"	S24 E	102.74 feet
Black Spruce	2"	S51 W	77.53 feet
Steel Sign Post		West	0.73 feet

4. Center-East Sixteenth Corner

Corner position is established at mid-point and on line between the East Quarter Corner and the Center Quarter Corner.

Corner References;

Black Spruce	2"	S66 W	29.44 feet
Black Spruce	2"	N18 W	30.79 feet
Steel sign post		North	0.6 feet
Steel sign post		West	0.65 feet

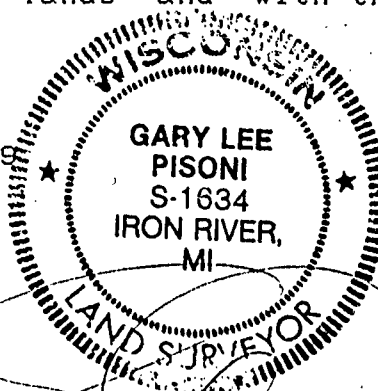
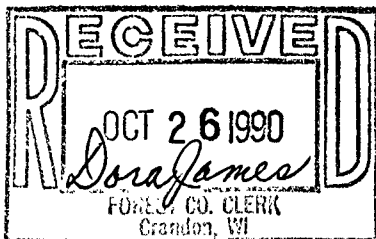
SURVEYOR'S CERTIFICATE

State of Wisconsin) ss
County of Forest)

I, Gary L. Pisoni, a Cadastral Surveyor, and a Registered Land Surveyor in the State of Wisconsin, hereby certify that I have surveyed and sub-divided Section 15, Township 40 North, Range 14 East, Fourth Principal Meridian, State of Wisconsin.

The plat map and survey notes herewith are a correct representation of the land surveyed and divided. I have surveyed and sub-divided said section in accordance with the rules for the survey of public lands and with the statutes of the State of Wisconsin.

Date of Survey; 1989



Gary L. Pisoni
Cadastral Surveyor
R.L.S. State of Wisconsin
Certificate S-1634

Survey requested by;

District Ranger

Date

9-18-90