

Stock No. 26273

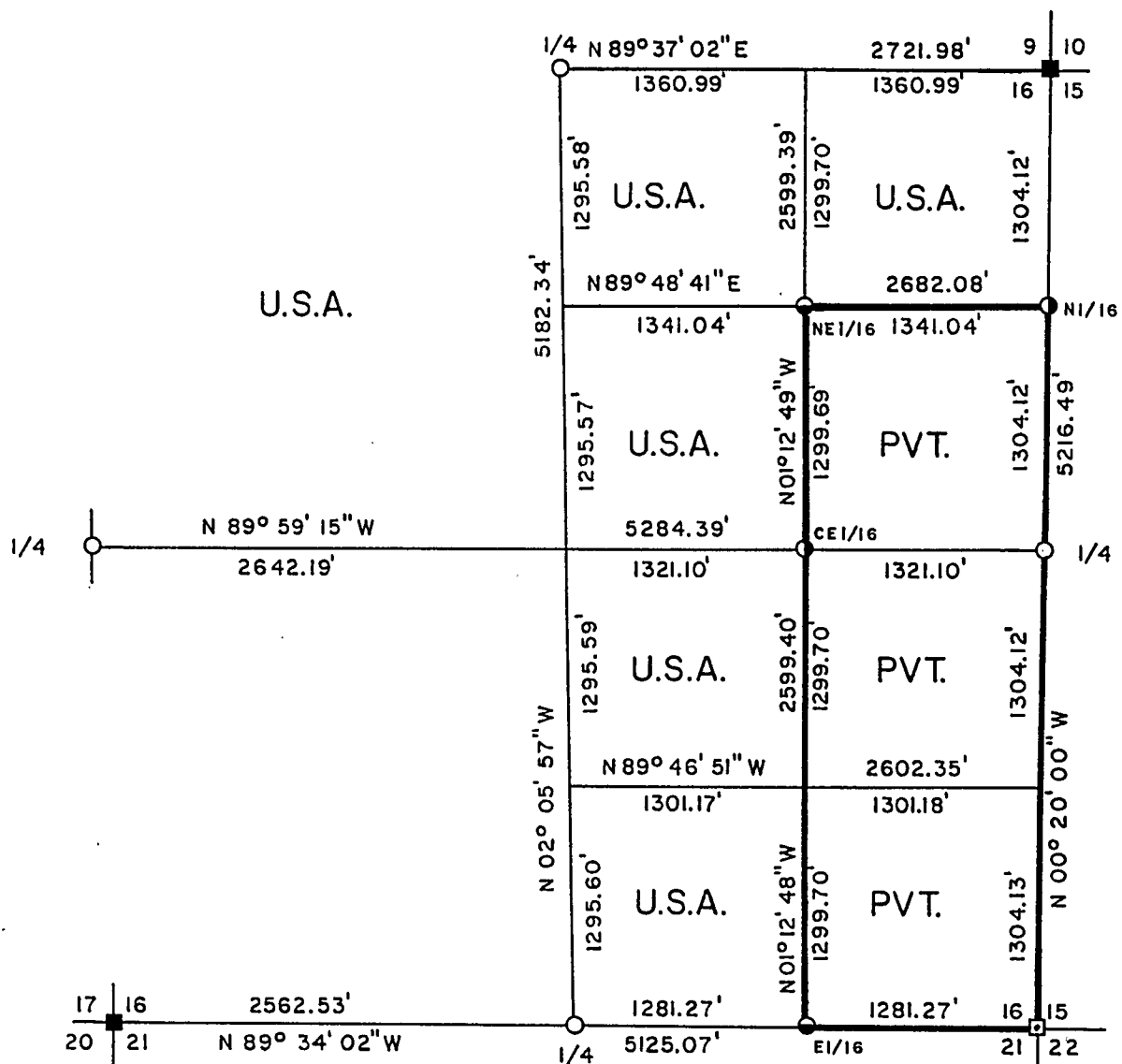
FOREST CO SURVEYOR

FILE # 401416-19901026

DATE _____ BY _____

PLAT OF SURVEY FOR CERTIFIED LAND CORNER
RESTORATION AND ESTABLISHMENTBEING THE CORNERS FOR THE N 1/2-NE 1/4, SW 1/4-NE 1/4, W 1/2-SE 1/4
AND NW 1/4 OF SECTION 16, T.40N. R.14 E., FOURTH PRINCIPAL MERIDIAN

COUNTY OF FOREST, STATE OF WISCONSIN



SCALE 1"=1000'

1000 0 1000

Scale in feet

LEGEND

- 2 inch I.D. iron pipe monument with a brass cap set by U.S.F.S.
- 2½ inch diameter aluminum pipe monument, 36 inches long set by Gary L. Pisoni in 1986.
- 2½ inch I.D. iron pipe monument with a brass cap set by General Land Office 1950 Dependent resurvey.
- 1 inch diameter aluminum pipe monument, 36 inches long with an aluminum cap stamped to identify the corner.
- 1 inch diameter aluminum pipe monument, 60 inches long with an aluminum cap stamped to identify the corner.
- Boundary line marked to Forest Service standards.

Note: Bearings are true bearings as referenced to the East section line of Section 16 as determined by solar observation from previous survey of Section 16 in 1986 by Gary L. Pisoni R.L.S.

Stock No. 26273

Sheet 2 of 4

SURVEY NOTES

This survey was made by Gary L. Pisoni, a Registered Land Surveyor in the State of Wisconsin, for the U.S.D.A., Forest Service, for the purpose of recovering, restoring, establishing, marking, and perpetuating the corners and boundary lines of U.S. Government Land on the perimeter and within Section 16, Township 40 North, Range 14 East, Fourth Principal Meridian, Forest County, State of Wisconsin.

The Original Government Sub-division of this township was done in 1865 by William E. Daugherty. The corners recovered by Jean Resvick, Cadastral Surveyor for the U.S. Forest Service and corners recovered by Dependent Resurvey of the U.S. Department of the Interior General Land Office in 1924 and 1950 marking the perimeter of Section 16 were used as control for the sub-division survey of Section 16. I originally sub-divided Section 16 for the U.S.F.S. in 1986 and in 1989, I completed additional interior survey work in Section 16 for the U.S.F.S.

The bearings between corner positions are true bearings referenced to a solar observation as determined by the original 1986 plat of survey of Section 16 by Gary L. Pisoni.

The accuracy of this survey exceeds the State requirements of 1 in 3000.

The field notes and a copy of the Plat of Survey are on file in the Forest Supervisor's Office at Rhinelander, Wisconsin.

The U.S. Government acquired title to the lands in Section 16 in 1935 and 1936.

CORNERS RECOVERED AND RESTORED1. Northeast Section Corner

Corner position restored by Jean Resvick in 1968 and Gary Pisoni in 1986.

1968 Corner References Recovered;

White Birch	9"	S21 00'E	26.37 feet
White Birch	6"	N81 00'W	24.25 feet
Maple	7"	N82 45'E	11.20 feet

1986 Corner References;

Sugar Maple	7"	N26 30'E	29.28 feet
Steel Sign Post		S60 00'W	1.50 feet

2. East Quarter Corner

Corner position restored from Gary Pisoni's 1986 survey of this Section.

1986 Corner References;

Balsam	10"	S89 E	22.88 feet
Black Cherry	8"	S10 W	63.19 feet
Balsam	9"	N16 W	24.03 feet
Steel Sign Post		S73 W	1.19 feet

Stock No. 26273

Sheet 3 of 4

3. Southeast Section Corner

Corner position restored by Dependent Resurvey in 1950, Jean Resvick in 1969, and Gary Pisoni in 1986.

1950 Corner References Recovered;

Cedar	13"	S43 30'W	73.30 feet
Poplar	14"	N55 30'W	17.80 feet

1969 Corner References Recovered;

White Spruce	6"	N71 E	13.42 feet
White Birch	8"	S65 E	17.20 feet
Black Spruce	4"	N67 W	19.10 feet

1986 Corner Reference;

Steel Sign Post		North	1.30 feet
-----------------	--	-------	-----------

4. South Quarter Corner

Corner position restored from Gary Pisoni's 1986 survey of this section.

1986 Corner References;

Black Spruce	9"	S51 00'W	13.76 feet
Cedar	8"	N80 00'W	14.49 feet
Cedar	7"	N03 30'W	10.26 feet
Steel Sign Post		S50 00'E	0.73 feet

5. Southwest Section Corner

Corner position restored by Jean Resvick in 1970 and Gary Pisoni in 1986.

1970 Corner References;

Maple	15"	S41 54'W	42.77 feet
Balsam	8"	N32 16'W	16.05 feet
NW Corner of Cabin		S81 17'E	52.55 feet
Steel Sign Post		N27 00'W	1.50 feet

1986 Corner Reference;

Balsam	8"	S34 00'E	9.46 feet
--------	----	----------	-----------

6. West Quarter Corner

Corner position restored from Gary Pisoni's 1986 survey of this section.

1986 Corner References;

Red Pine	6"	N27 E	24.61 feet
White Spruce	6"	S41 E	10.78 feet
White Spruce	10"	S60 W	15.26 feet
Steel Sign Post		N40 W	0.90 feet

7. North Quarter Corner

Corner position restored from Gary Pisoni's 1986 survey of this section.

1986 Corner References;

Sugar Maple	7"	N72 E	54.19 feet
Sugar Maple	8"	S55 W	25.22 feet
Sugar Maple	6"	N11 W	40.59 feet
Steel Sign Post		S45 E	1.15 feet

CORNER'S ESTABLISHED1. Northeast Sixteenth Corner

Corner position is established at the intersection of straight lines between opposing Sixteenth Corner positions on the perimeter of the Northeast Quarter of the section.

Corner References;

Tamarack	7"	S39 W	24.00 feet
Tamarack	4"	N17 W	18.37 feet
Steel Sign Post		East	0.67 feet

Stock No. 26273

Sheet 4 of 4

2. North Sixteenth Corner between Sections 15 and 16

Corner position is established at mid-point and on line between the Northeast Section Corner and the East Quarter Corner.

Corner References;

Black Spruce	2"	S24 E	102.74 feet
Black Spruce	2"	S51 W	77.53 feet
Steel Sign Post		West	0.73 feet

3. Center-East Sixteenth Corner

Corner position is established at mid-point and on line between the East Quarter Corner and the Center Quarter Corner.

Corner References;

Black Spruce	5"	S61 E	13.84 feet
Black Spruce	6"	S18 W	19.43 feet
Steel Sign Post		North	0.65 feet

4. East Sixteenth Corner between Sections 16 and 21

Corner position is established at mid-point and on line between the Southeast Section Corner and the South Quarter Corner.

Corner References;

Cedar	10"	S77 E	37.50 feet
Cedar	10"	S11 W	30.51 feet
Steel Sign Post		N45 W	0.94 feet

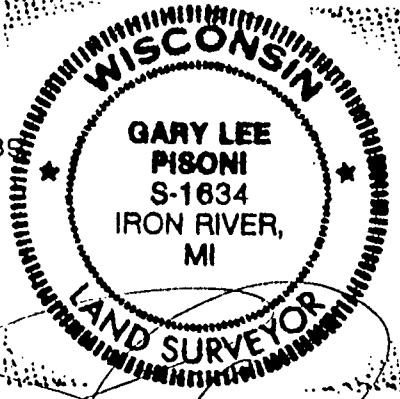
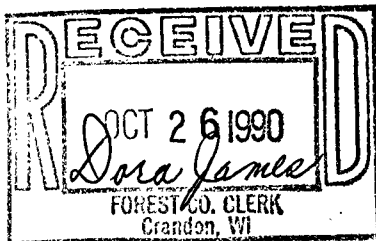
SURVEYOR'S CERTIFICATE

State of Wisconsin) ss
County of Forest)

I, Gary L. Pisoni, a Cadastral Surveyor, and a Registered Land Surveyor in the State of Wisconsin, hereby certify that I have surveyed and sub-divided Section 16, Township 40 North, Range 14 East, Fourth Principal Meridian, State of Wisconsin.

The plat map and survey notes herewith are a correct representation of the land surveyed and divided. I have surveyed and sub-divided said section in accordance with the rules for the survey of public lands and with the statutes of the State of Wisconsin.

Date of Survey; 1989



Gary L. Pisoni
Cadastral Surveyor
R.L.S. State of Wisconsin
Certificate S-1634

Survey requested by;

District Ranger

Date

5-18-90