

Stock No. 26273

FOREST CO SURVEYOR

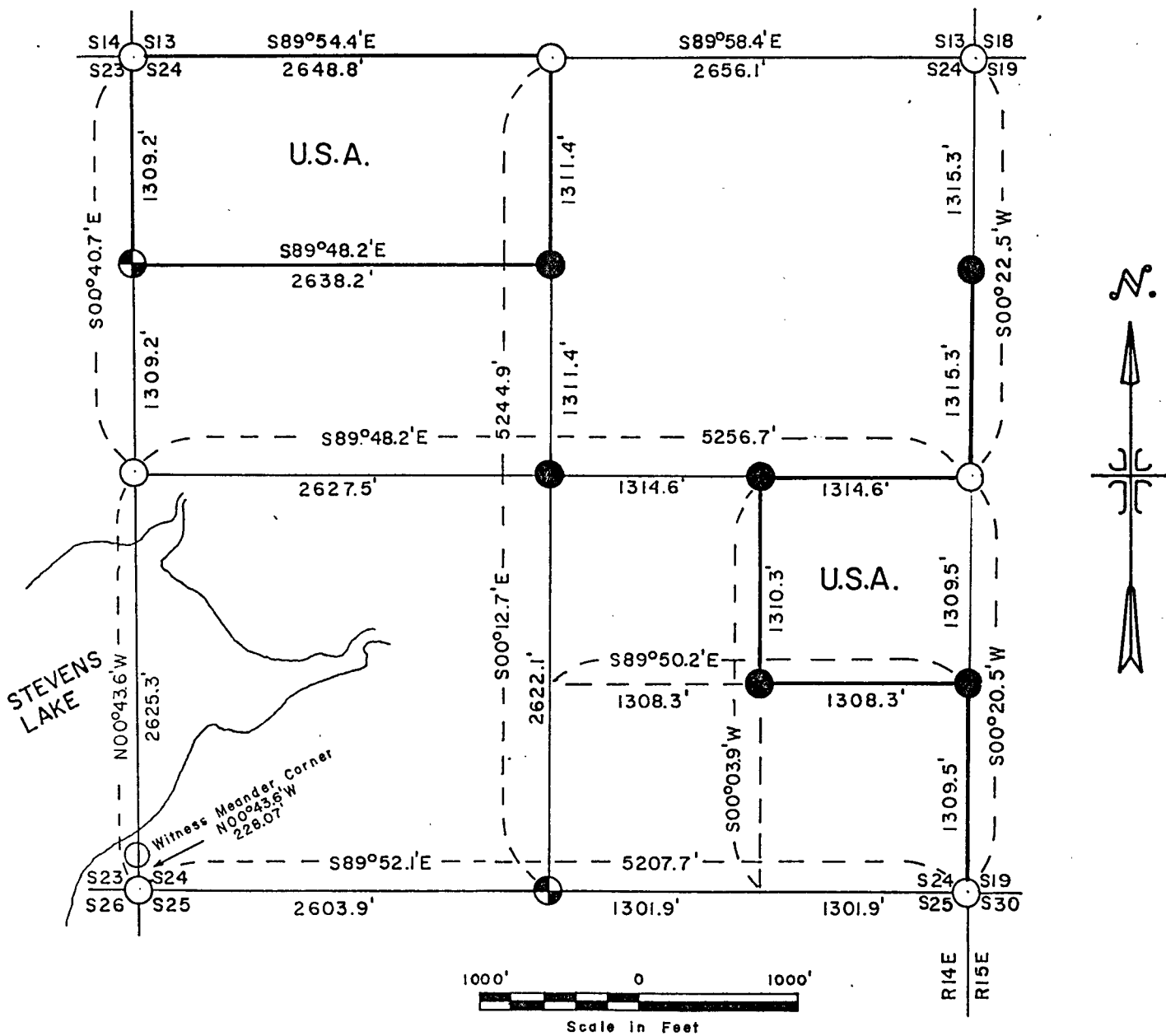
FILE # 401424-1983102

DATE \_\_\_\_\_ BY \_\_\_\_\_

Sheet 1 of 5

PLAT OF SURVEY FOR CERTIFIED LAND  
CORNER RESTORATION AND ESTABLISHMENTBEING THE CORNERS FOR THE N1/2 OF THE NW 1/4,  
AND THE NE 1/4 OF THE SE 1/4, OF SECTION 24, T40N,  
R14E, FOURTH PRINCIPAL MERIDIAN

COUNTY OF FOREST, STATE OF WISCONSIN



## LEGEND

- Dependent Resurvey Monument
- 2½ inch diameter aluminum monument, 30 inches long with an aluminum cap stamped to identify the corner.
- ⊙ 2½ inch diameter aluminum monument 5 feet long with an aluminum cap stamped to identify the corner.
- Boundary line marked to standard.

CONVERSION FACTORS  
 Feet to Meters 0.304801  
 Meters to Feet 3.280833

NOTE: All bearings referenced to solar observations.

Stock No. 26273

Sheet 2 of 5

SURVEY NOTES

This survey was made by the U.S. Department of Agriculture, Forest Service, to establish and mark controlling subdivision corners of U.S. Government land in Section 24, Township 40 North, Range 14 East, Fourth Principal Meridian, Forest County, Wisconsin.

The original Government survey of this township was made in 1865.

A Dependent Resurvey of a portion of this township including Section 24, was made by the U.S. Department of the Interior, Bureau of Land Management commencing in 1944 and completed in 1950.

The U.S. Government acquired title to lands in Section 24 in 1935 and 1938.

The bearings between corner positions are true bearings as determined by reference to solar observations. The accuracy of this survey exceeds the State requirement of 1 in 3000.

The field notes and a copy of the plat of survey are on file in the Forest Supervisor's Office at Rhinelander, Wisconsin.

CORNERS RECOVERED AND RESTORED1. Section Corner Common to Sections 13, 14, 23, 24

Corner position is marked by a monument from the 1945 Dependent Resurvey.

Corner references recovered:

Birch	10"	N49°30'E	23.76 Feet
Birch	11"	S47°30'E	32.34 Feet
Spruce	9"	S74°15'W	12.54 Feet
Spruce	6"	N28°W	45.61 Feet
4x4 Wood Sign Post		Northwest	2.0 Feet

2. Quarter Corner Between Sections 13 and 24

Corner position is marked by a monument from the 1945 Dependent Resurvey.

Corner references recovered:

Spruce	8"	N 7°45'E	41.58 Feet
Popple	7"	S88°45'E	14.54 Feet

New corner references:

Spruce	4"	S73°W	8.99 Feet
Spruce	5"	N47°W	6.81 Feet
Steel sign post		Southwest	0.60 Foot

3. Section Corner Common to Sections 13, 18, 19 and 24, Ranges 14 and 15 East

Corner position is marked by a 12 inch long, 6 inch diameter concrete monument 30 inches in the ground.

Corner references recovered:

Witness corner from the 1945 Dependent Resurvey

Witness corner references:

Aspen	8"	N06°E	76.85 Feet
Maple	10"	S79°W	44.30 Feet
Aspen	10"	N55°W	65.76 Feet

## Stock No. 26273

Sheet 3 of 5

4. Quarter Corner Between Sections 19 and 24, Ranges 14 and 15 East

Corner position is marked by a monument from the 1945 Dependent Resurvey.  
Previously recorded Document No. 110928, January 31, 1977.

New corner reference:

Steel sign post	Northeast	0.50 Foot
-----------------	-----------	-----------

5. Section Corner Common to Sections 19, 24, 25 and 30, Ranges 14 and 15 East

Corner position is marked by a monument from the 1945 Dependent Resurvey.  
Previously recorded Document No. 210738, March 16, 1971.

6. Section Corner Common to Sections 23, 24, 25 and 26

Corner position is marked by a monument from the 1945 Dependent Resurvey.  
Previously recorded Document No. 106882, March 31, 1975.

7. Witness Meander Corner Between Sections 23 and 24

Corner position is marked by a monument from the 1945 Dependent Resurvey.

Corner references recovered:

Hemlock	15"	S60°E	2.64 Feet
Hemlock Tipout		S03°W	13.23 Feet

New corner references:

Elm	8"	S22°W	17.36 Feet
Steel Sign Post		West	0.50 Foot

8. Quarter Corner Between Sections 23 and 24

Corner position is marked by a monument from the 1945 Dependent Resurvey.

Corner references recovered:

Cedar	9"	N47°E	19.95 Feet
Cedar	12"	N33°E	34.70 Feet

New corner reference:

Steel sign post	North	0.50 Foot
-----------------	-------	-----------

CORNERS ESTABLISHED1. Quarter Corner Between Sections 24 and 25

Corner position is at midpoint and on line between the southeast and the southwest section corners of Section 24.

Corner references:

Spruce	7"	S02°E	23.69 Feet
Spruce	5"	N75°W	14.60 Feet
Steel Sign Post		Southeast	0.50 Foot

2. North Sixteenth Corner Between Sections 23 and 24

Corner position established at midpoint and on line between the northwest section corner and the west quarter corner of Section 24.

Corner references:

Tamarack	9"	N 5°E	28.36 Feet
Spruce	5"	S74°E	16.33 Feet
Steel Sign Post		Northeast	0.60 Foot

Stock No. 26273

Sheet 4 of 5

3. North Sixteenth Between Sections 19 and 24, Ranges 14 and 15 East

Corner position is at midpoint and on line between the northeast section corner and the east quarter corner of Section 24.

## Corner references:

Red Pine	11"	S29°E	26.02 Feet
Red Pine	10"	S12°W	28.96 Feet
Steel Sign Post		Southeast	0.50 Foot

4. South Sixteenth Corner Between Sections 19 and 24, Ranges 14 and 15 East

Corner position is at midpoint and on line between the southeast section corner and the east quarter corner of Section 24.

## Corner references:

Aspen	8"	S09°E	17.12 Feet
Aspen	9"	S79°W	5.37 Feet
Steel sign post		Northeast	0.50 Foot

5. Center Quarter Corner of Section 24

Corner position is at the intersection of the straight lines between opposing quarter corners on the perimeter of Section 24.

## Corner references:

Maple	12"	S12°W	22.82 Feet
Maple	11"	N75°W	23.66 Feet
Steel sign post		South	0.50 Foot

6. Center North Sixteenth Corner of Section 24

Corner position established at midpoint and on line between the north quarter corner and the center quarter corner of Section 24.

## Corner references:

Maple	6"	S61°W	20.52 Feet
Maple	10"	N25°W	25.01 Feet
Steel sign post		Northwest	0.50 Foot

7. Center East Sixteenth Corner of Section 24

Corner position is at midpoint and on line between the center quarter corner and the east quarter corner of Section 24.

## Corner references:

Spruce	6"	S18°W	20.88 Feet
Spruce	8"	N85°W	24.96 Feet
Steel sign post		Southeast	0.50 Foot

8. Southeast Sixteenth Corner of Section 24

Corner position is at the intersection of the straight lines between opposing sixteenth corners on the perimeter of the southeast quarter of Section 24.

## Corner references:

Aspen	7"	N65°E	35.46 Feet
White Birch	10"	S42°E	30.80 Feet
Steel sign post		Northeast	0.50 Foot

Stock No. 26273

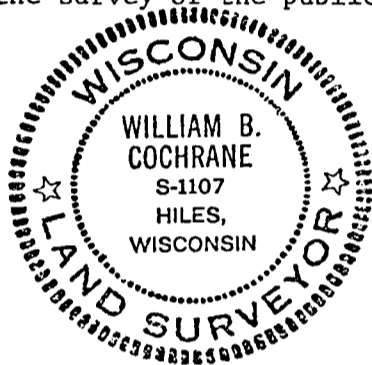
Sheet 5 of 5

SURVEYOR'S AFFIDAVIT

State of Wisconsin)  
County of Forest ) ss

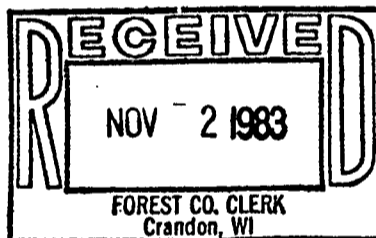
I, William B. Cochrane, Land Surveyor, U.S. Forest Service and a registered Land Surveyor in the State of Wisconsin, hereby certify that I have surveyed the parcel of land as shown on this plat in Section 24, Township 40 North, Range 14 East, Fourth Principal Meridian, State of Wisconsin.

The plat map and survey notes herewith are a correct representation of the land surveyed and divided. I have surveyed and subdivided said section in accordance with rules for the survey of the public lands and with the statutes of the State of Wisconsin.



Date of Survey: 1981

*William B. Cochrane*  
Land Surveyor, U.S. Forest Service  
R.L.S. State of Wisconsin  
Certificate S-1107



*Dora C. James*