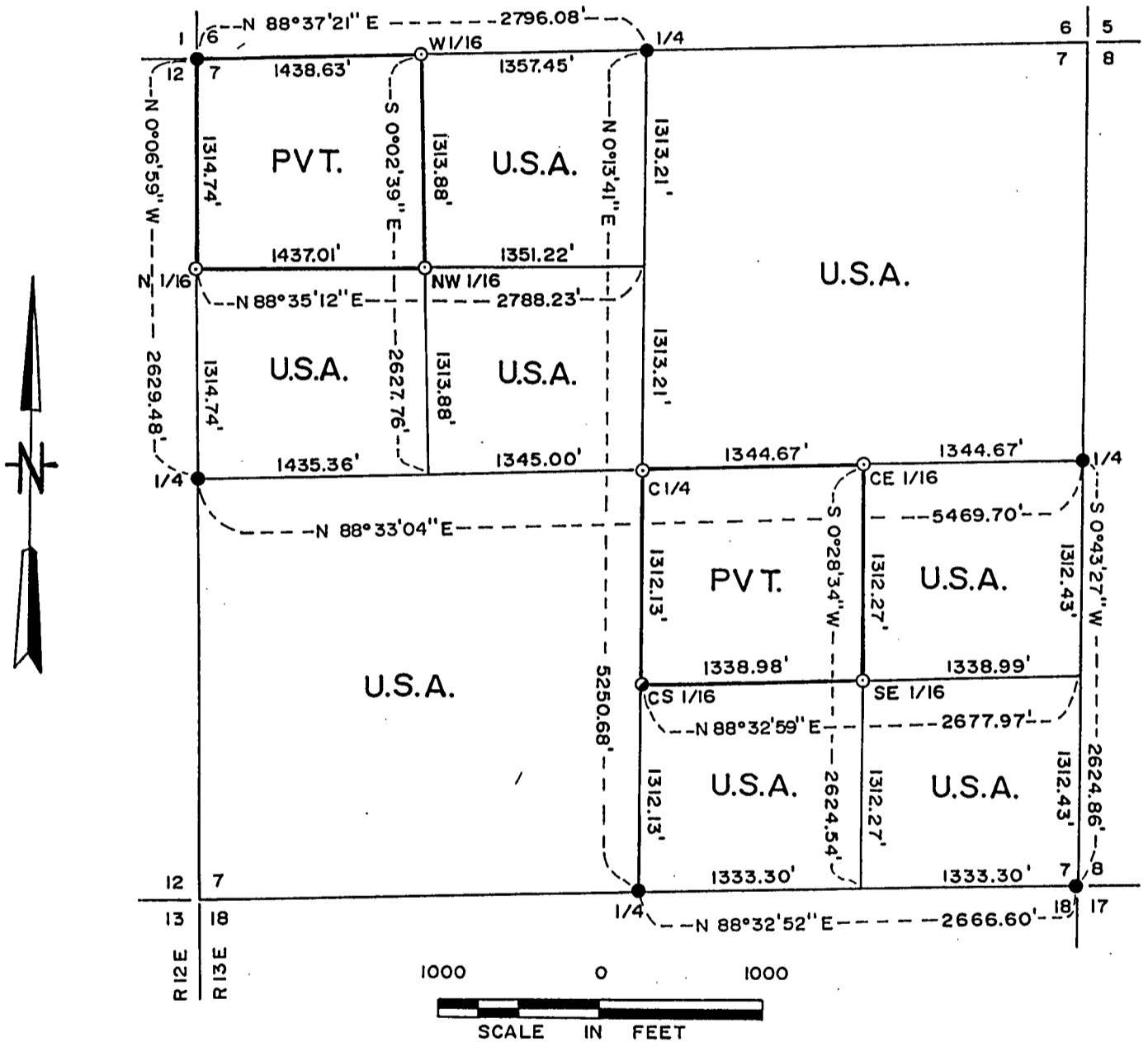


PLAT OF SURVEY FOR CERTIFIED LAND CORNER  
 RESTORATION AND ESTABLISHMENT  
 BEING THE CORNERS FOR ALL OF THE NW 1/4 EXCEPT THE NW 1/4  
 OF THE NW 1/4, AND ALL OF THE SE 1/4 EXCEPT THE NW 1/4 OF  
 THE SE 1/4, SECTION 7, TOWNSHIP 41 NORTH, RANGE 13 EAST.  
 FOURTH PRINCIPAL MERIDIAN  
 COUNTY OF FOREST, STATE OF WISCONSIN



**LEGEND**

- Boundary line marked to standard.
- 1 inch diam. aluminum monument, 36 inches long, with aluminum cap, stamped to identify the corner.
- 1 inch diam. aluminum monument, 60 inches long, with aluminum cap, stamped to identify the corner.
- General Land Office Dependent Resurvey Monument.

Conversion Factors: Feet to meters - 0.304801  
 Meters to feet - 3.280833

SURVEY NOTES

This survey was made by Stephen J. Favorite, a Registered Land Surveyor in the State of Wisconsin, for the U.S. Department of Agriculture, Forest Service, to establish and mark controlling subdivision corners of the U.S. Government Land in Section 7, Township 41 North, Range 13 East, Fourth Principal Meridian, Forest County, Wisconsin.

The original Government survey of this Township was made in 1865.

A dependent re-survey was made by the U.S. Department of the Interior General Land Office in 1942. The corners of the dependent re-survey on the perimeter of Section 7 were recovered as control for the subdivision survey of Section 7.

The U.S. Government acquired title to the lands in Section 7 in 1935, 1936, and 1943.

The bearings between corner positions are true bearings as determined by reference to solar observations. The accuracy of this survey exceeds the State requirements of 1 in 3000.

The field notes and a copy of the Plat of Survey are on file in the Forest Supervisor's office at Rhinelander, Wisconsin.

CORNERS RECOVERED AND RESTORED1. Section Corner common to Sections 7, 8, 17, and 18.

Corner is marked by a 4" brass capped concrete monument, 1942 Dependent Resurvey.

Corner references recovered:

W. Pine	26"	N 58 3/4° W	190.40 feet
Spruce	14"	N 50 ° E	88.77 feet
W. Pine (poor)	22"	S 78 3/4° E	172.92 feet
Twin Poplar (poor)	16"	S 8 1/4° W	2.64 feet

Corner references made:

W. Birch	7"	S 84° W	35.39 feet
Balsam	7"	S 35° E	8.95 feet
Steel post and sign		S 60° W	1.0 foot

2. Quarter corner between Sections 7 and 18.

Corner is marked by a 2" brass capped iron pipe, 1942 Dependent Resurvey.

Corner reference recovered:

S. Maple	14"	N 3° E	29.72 feet
----------	-----	--------	------------

Corner references made:

S. Maple	16"	N 70° E	67.00 feet
Maple	10"	S 36° W	33.50 feet
R. Oak	12"	N 87° W	35.54 feet
Steel post and sign		S 50° W	0.9 foot

3. Quarter corner between Sections 7 (R 13 E) and 12 (R 12 E).

Corner is marked by a 6" round brass capped concrete monument, 1941 Dependent Resurvey.

Corner reference recovered:

Tamarack	12"	N 89° E	69.80 feet
----------	-----	---------	------------

Corner references made:

Spruce	5"	S 74° W	19.01 feet
Spruce	8"	N 27° W	52.20 feet
Spruce	18"	N 20° E	78.55 feet

Steel post and sign		South	1.0 foot
---------------------	--	-------	----------

4. Section corner common to Sections 6, 7, (R 13 E) and 1, 12(R 12 E).

Corner is marked by a 6" round brass capped concrete monument, 1941 Dependent Resurvey.

Corner references recovered:

W. Pine	16"	N 50° W	54.08 feet
W. Spruce	16"	N 65° E	38.37 feet

Corner references made:

Balsam	7"	S 12° W	13.41 feet
Balsam	7"	S 75° W	52.90 feet

Steel post and sign		East	0.7 foot
---------------------	--	------	----------

5. Quarter corner common to Sections 6 and 7.

Corner is marked by a 2" brass capped iron pipe, 1942 Dependent Resurvey.

Corner references recovered:

Maple	14"	N 26 1/2° W	18.48 feet
Maple	14"	S 83° E	22.44 feet

Corner references made:

Maple	6"	S 12° E	44.22 feet
Maple	10"	S 37° W	24.08 feet

Steel post and sign		N 50° E	1.0 foot
---------------------	--	---------	----------

6. Quarter corner between Sections 7 and 8.

Corner is marked by a 2" brass capped iron pipe, 1942 Dependent Resurvey.

Corner reference recovered:

Maple	16"	N 31° W	26.76 feet
-------	-----	---------	------------

CORNERS ESTABLISHED1. North Sixteenth corner between Section 7 (R13E) and Section 12, (R12E).

Corner position established at the midpoint between the Northwest corner and the West Quarter corner of Section 7.

Corner references:

W. Spruce	12"	S 66° W	34.75 feet
W. Pine	14"	N 54° W	17.43 feet
Steel post and sign		S 80° W	0.8 foot

2. West Sixteenth corner between Sections 6 and 7.

Corner position established at the midpoint between the Northwest corner and the West Quarter corner of Section 7.

Corner references:

W. Spruce	12"	N 19° E	16.79 feet
W. Pine	16"	S 68° E	50.74 feet
Steel post and sign		N 45° E	1.0 foot

3. Northwest Sixteenth corner.

Corner position established at the intersection of straight lines between opposing sixteenth corner positions of the northwest quarter of Section 7.

Corner references:

R. Oak	10"	N 79° E	38.75 feet
R. Maple	20"	S 17° E	39.22 feet
Steel post and sign		S 45° E	1.0 foot

4. Center Quarter corner.

Corner position established at the intersection of straight lines between opposing quarter corners of Section 7.

Corner references:

R. Oak	16"	S 75° W	33.68 feet
R. Oak	15"	North	40.48 feet
Steel post and sign		Northwest	1.0 foot

5. Centereast Sixteenth corner.

Corner position established at the midpoint between the Center Quarter corner and the East Quarter corner of Section 7.

Corner references:

Hemlock	16"	N 73° E	9.26 feet
S. Maple	12"	N 37° W	18.74 feet
Steel post and sign		N 35° E	0.9 feet

CORNERS ESTABLISHED6. Southeast Sixteenth corner.

Corner position established at the intersection of straight lines between opposing sixteenth corner positions of the Southeast quarter of Section 7.

## Corner references:

R. Maple	9"	S 4° E	16.61 feet
Spruce	14"	N 52° E	32.22 feet
Steel post and sign		Southeast	1.0 foot

7. Centersouth Sixteenth corner.

Corner position established at the midpoint between the Center Quarter corner and the South Quarter corner of Section 7.

## Corner references:

Balsam	6"	N 15° W	23.15 feet
B.Spruce	15"	S 40° W	36.03 feet
Steel post and sign		Southwest	1.0 foot

SURVEYOR'S AFFIDAVIT

State of Wisconsin )  
County of Forest ) ss

I, Stephen J. Favorite, Cadastral Surveyor and a registered land surveyor in the State of Wisconsin, hereby certify that I have surveyed and subdivided Section 7, Township 41 North, Range 13 East, Fourth Principal Meridian, State of Wisconsin.

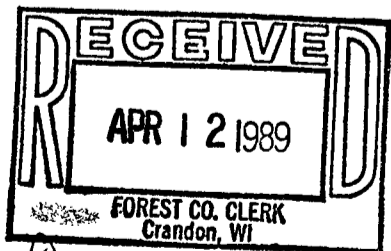
The plat map and survey notes herewith are a correct representation of the land surveyed and divided. I have surveyed and subdivided said Section in accordance with the rules for the survey of public lands and with the statutes of the State of Wisconsin.



*Stephen J. Favorite*  
Stephen J. Favorite  
Cadastral Surveyor  
R.L.S. State of Wisconsin  
Certificate S-1616

Date of Survey: 1987

Survey requested by; *Annika Egan* *11/27/88*  
District Ranger Date



*Dora C. James*