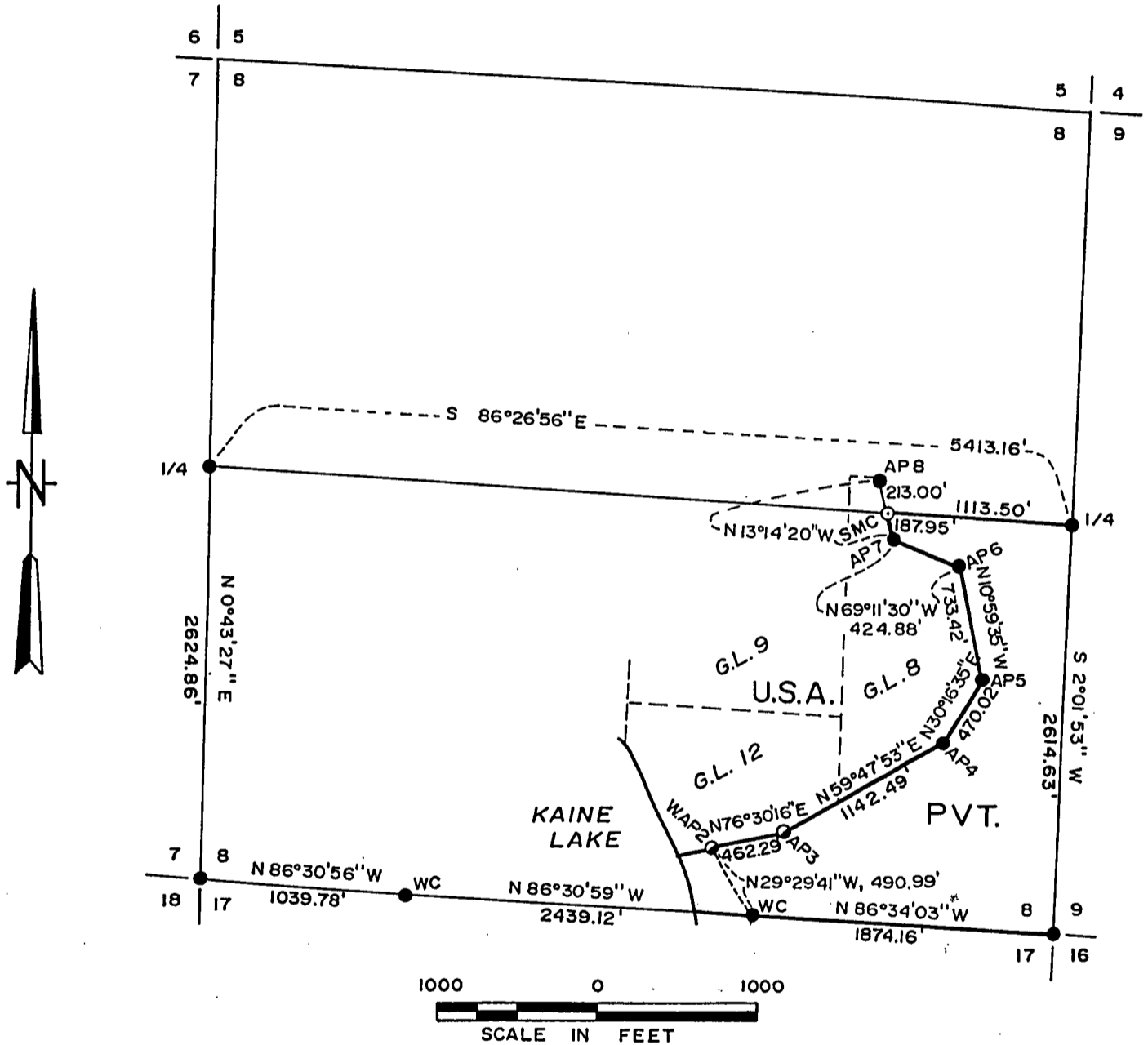


PLAT OF SURVEY FOR CERTIFIED LAND CORNER
RESTORATION AND ESTABLISHMENT

BEING THE CORNERS FOR PART OF THE SOUTHERLY AND EASTERLY
LINES OF GOV'T LOT 8 AND GOV'T LOT 12, SECTION 8, T 41N, R 13E
FOURTH PRINCIPAL MERIDIAN
COUNTY OF FOREST, STATE OF WISCONSIN



LEGEND

- Boundary line marked to standard.
- ⊙ 1 inch diam. aluminum monument, 36 inches long, with aluminum cap, stamped to identify the corner.
- General Land Office Dependent Resurvey Monument.
- ⊙ 2 1/2 inch diam. brass capped iron pipe.

Conversion Factors: Feet to meters - 0.304801
Meters to feet - 3.280833

SURVEY NOTES

This survey was made by Stephen J. Favorite, a Registered Land Surveyor in the State of Wisconsin, for the U.S. Department of Agriculture, Forest Service, to establish and mark controlling subdivision corners of the U.S. Government Land in Section 8, Township 41 North, Range 13 East, Fourth Principal Meridian, Forest County, Wisconsin.

The original Government survey of this Township was made in 1865.

A dependent re-survey of Township 41 North, Range 13 East was made by the U.S. Department of the Interior General Land Office in 1942. A dependent re-survey and extension survey of lands omitted from the original survey was made by the U.S. Department of the Interior General Land Office in 1943. The corners of the dependent resurvey of the omitted lands and on the perimeter of Section 8 were recovered as control for the subdivision survey of Section 8.

The U.S. Government acquired title to omitted lands in Section 8 in 1969.

The bearings between corner positions are true bearings as determined by reference to solar observations. The accuracy of this survey exceeds the State requirements of 1 in 3000.

The field notes and a copy of the Plat of Survey are on file in the Forest Supervisors office at Rhinelander, Wisconsin.

CORNERS RECOVERED AND RESTORED1. Section corner common to Sections 7, 8, 17 and 18.

Corner is marked by a 4" round brass capped concrete monument, 1942 Dependent Resurvey.

Corner references recovered:

W. Pine (dying)	22"	S 78 3/4° E	172.92 feet
Twin Poplar (dying)	16"	S 8 1/4° W	2.64 feet
W. Pine	26"	N 58 3/4° W	190.40 feet
Spruce	14"	N 50° E	88.77 feet

New corner references:

W. Birch	7"	S 84° W	35.39 feet
Balsam	7"	S 35° E	8.95 feet
Steel post and sign		S 60° W	1.0 foot

2. Quarter corner between Sections 7 and 8.

Corner is marked by a 2" brass capped iron pipe, 1942 Dependent Resurvey.

Corner reference recovered:

Maple	16"	N 31° W	26.76 feet
-------	-----	---------	------------

3. Quarter corner between Sections 8 and 9.

Corner is marked by a 2" brass capped iron pipe, 1942 Dependent Resurvey.

4. Section Corner common to Sections 8, 9, 16, and 17.

Corner is marked by a 2" brass capped iron pipe, 1942 Dependent Resurvey.

5. Witness corner between Sections 8 and 17 east side of Kaine Lake.

Corner is marked by a 4" round brass capped concrete monuments, 1942 Dependent Resurvey.

Corner references recovered:

W. Pine	24"	N 72 1/4° E	61.57 feet
Tamarack	22"	S 24° W	5.63 feet

Steel post and sign		West	1.0 foot
---------------------	--	------	----------

6. Witness corner between Sections 8 and 17 on west side of Kaine Lake.

Corner is marked by a 4" round brass capped concrete monument, 1942 Dependent Resurvey.

7. Witness Angle Point 2, Section 8.

Corner is marked by a 2" brass capped iron pipe, 1975 replacement of the 1943 Dependent Resurvey monument.

Corner references recovered:

Tamarack(dead)	4"	S 52° E	7.90 feet
Tamarack	7"	N 02° E	54.22 feet
Tamarack	5"	N 60° E	30.09 feet

Steel post and sign		N 02° E	1.0 foot
---------------------	--	---------	----------

8. Angle Point 3, Section 8.

Corner is marked by a 2" brass capped iron pipe, 1975 replacement of the 1943 Dependent Resurvey monument.

Corner references recovered:

Tamarack	7"	N 47° W	50.44 feet
Tamarack	4"	N 01° W	30.04 feet

Steel post and sign		North	1.0 foot
---------------------	--	-------	----------

9. Angle point 4, Section 8.

Corner is marked by a 4" round brass capped concrete monument, 1943 Dependent Resurvey.

Corner references recovered:

W. Pine	18"	N 49° E	13.86 feet
W. Spruce	11"	N 36 1/2° W	8.91 feet

Steel post and sign		N 10° W	0.7 foot
---------------------	--	---------	----------

10. Angle Point 5, Section 8.

Corner is marked by a 4" round brass capped concrete monument, 1943 Dependent Resurvey.

Corner references recovered:

Poplar	10"	N 39° W	14.69 feet
B. Spruce	14"	S 07° W	2.25 feet
B. Spruce	10"	N 26° W	32.00 feet
Steel post and sign		N 50° W	0.7 feet

11. Angle Point 6, Section 8.

Corner is marked by a 4" round brass capped concrete monument, 1943 Dependent Resurvey.

Corner references recovered:

Tamarack	9"	S 60 1/4° E	23.10 feet
Tamarack	14"	N 74 1/2° W	22.15 feet
B. Spruce	6"	N 02° W	12.78 feet
Steel post and sign		N 20° E	0.7 foot

12. Angle Point 7, Section 8.

Corner is marked by a 4" round brass capped concrete monument, 1943 Dependent Resurvey.

Corner references recovered:

Cedar	14"	N 27 3/4° W	15.18 feet
Cedar	13"	S 2 3/4° E	16.50 feet
Balsam	6"	N 70° W	2.75 feet
Steel post and sign		N 60° W	1.0 foot

13. Angle Point 8, Section 8.

Corner is marked by a 4" round brass capped concrete monument, 1943 Dependent Resurvey.

Corner references recovered:

Aspen	14"	N 68° W	13.58 feet
B. Spruce	6"	N 07° E	6.01 feet
Steel post and sign		North	0.5 foot

CORNER ESTABLISHED

1.) Special Meander Corner between AP 7 and AP 8, Section 8.

Corner position established at the intersection of straight lines between opposing East and West Quarter corners and between Angle Points 7 and 8, Section 8.

New corner references:

Cedar	12"	S 51° W	10.00 feet
Cedar	12"	N 64° W	18.37 feet
Steel post and sign		N 30° W	1.0 foot

SURVEYOR'S AFFIDAVIT

State of Wisconsin)
County of Forest) ss

I, Stephen J. Favorite, Cadastral Surveyor and a registered land surveyor in the State of Wisconsin, hereby certify that I have surveyed and subdivided Section 8, Township 41 North, Range 13 East, Fourth Principal Meridian, State of Wisconsin.

The plat map and survey notes herewith are a correct representation of the land surveyed and divided. I have surveyed and subdivided said section in accordance with the rules for the survey of public lands and with the statutes of the State of Wisconsin.



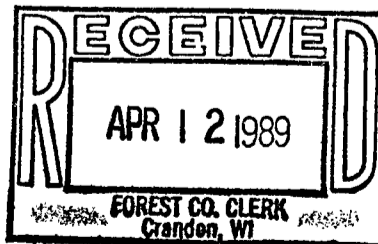
Stephen J. Favorite
Stephen J. Favorite
Cadastral Surveyor
R.L.S. State of Wisconsin
Certificate S-1616

Date of Survey: 1987

Survey requested by;

Abnelo Garcia
District Ranger

11/17/88
Date



Dora C. James