

Stock No. 26273

FOREST CO SURVEYOR

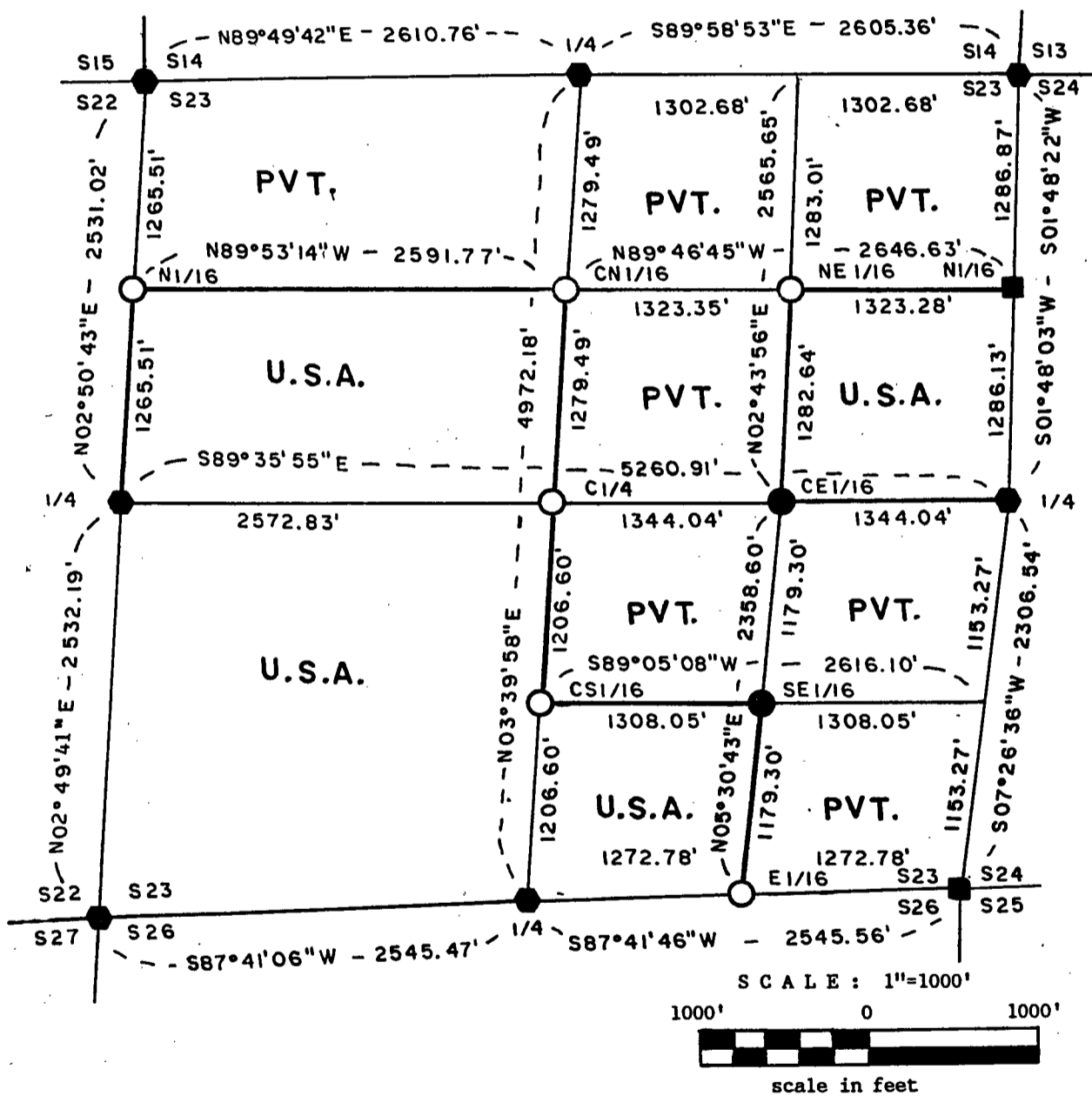
FILE # 41323-19870224

DATE \_\_\_\_\_ BY \_\_\_\_\_

**PLAT OF SURVEY FOR CERTIFIED LAND CORNER RESTORATION AND ESTABLISHMENT.**

BEING THE CORNERS FOR THE S 1/2 OF THE NW 1/4, THE SW 1/4, THE SE 1/4 OF THE NE 1/4, AND THE SW 1/4 OF THE SE 1/4.

SECTION 23, T41N, R13E, FOURTH PRINCIPAL MERIDIAN  
FOREST COUNTY, STATE OF WISCONSIN



**LEGEND**

- Boundary line marked to standard.
- 2 1/2 inch diameter aluminum pipe monument, 36 inches long with an aluminum cap stamped to identify the corner.
- 2 1/2 inch diameter aluminum pipe monument, 60 inches long with an aluminum cap stamped to identify the corner.
- ◆ General Land Office Dependent Resurvey Monuments.
- 2 inch diameter galvanized iron pipe 3 feet long with brass cap stamped to identify the corner.

**NOTE** Bearings are referenced to polaris observations.

Stock No. 26273

Sheet 2 of 5

## SURVEY NOTES

This survey was made by John C. Schulke, a Registered Land Surveyor in the State of Wisconsin, for the U.S. Department of Agriculture, Forest Service. The purpose of the survey was for recovery, establishing, marking and perpetuating the corners and boundary lines of the U.S. Government Land on the perimeter and within Section 23, Township 41 North, Range 13 East, Fourth Principal Meridian, Forest County, Wisconsin.

The original Government subdivision survey of this township was made by Daugherty and McDill in 1865. A dependent resurvey done under the supervision of Mr. Veal was made and approved by the General Land Office in 1942. The control for this survey is based on the 1942 dependent resurvey.

The bearings between corner positions are true bearings as determined by reference to polaris observations. The accuracy of this survey exceeds the State requirement for closure of 1 in 3,000. Corners recovered or established by this survey are marked as described in the map legend. Each monumented corner is referenced to blazed, scribed, painted and tagged bearing trees. Tie bearings are magnetic, and not corrected for declination.

CORNERS RECOVERED AND RESTORED

1. Section Corner Common to Section 14, 15, 22 and 23.  
Corner monument recovered in place and as described on Certified Land Corner Restoration form in the Forest County Records in 1974. D#105824.
2. Quarter Corner Between Sections 22 and 23.  
Corner monument recovered in place.  
  
Corner references recovered:
 

Maple	8"	S78°E	16.04 feet
Dead Birch	5"	S85°W	13.15 feet

  
 New corner references:
 

Sug. Maple	4"	N23°E	22.85 feet
Red Maple	9"	S18°W	47.4 feet
W. Birch	6"	N54°W	29.47 feet
Steel sign post		NE	2.3 feet
3. Section Corner Common to Sections 22, 23, 26 and 27.  
Corner monument recovered in place.  
  
Corner references recovered:
 

Cedar stump	14"	S20°W	28.05 feet
Cedar snag	12"	N20°W	37.95 feet

  
 New corner references:
 

Balsam	8"	N84°W	36.86 feet
Poplar	9"	S56°W	33.6 feet
Balsam	14"	S10°E	53.75 feet
Poplar	10"	N33°W	30.64 feet
Steel sign post		West	1.9 feet
4. Quarter Corner Between Sections 23 and 26.  
Corner monument recovered in place.  
  
Corner references recovered:
 

Cedar stump	8"	N07°E	18.48 feet
Cedar stump	12"	S46°E	21.45 feet

Stock No. 26273

Sheet 3 of 5

## New corner references:

Balsam	5"	N71°W	15.52 feet
Balsam	5"	N53°E	9.03 feet
Poplar	5"	S74°E	13.87 feet
"X" chiseled on Boulder	4'ht. 6'long	S24°E	12.58 feet
Steel sign post		NW	1.0 feet

5. Section Corner Common to Sections 23, 24, 25 and 26.  
Corner monument recovered in place and as described in survey of Section 24 by Jean F. Resvick (S-802) in 1977.

## Corner references recovered:

Maple	9"	N34°E	61.8 feet
Maple	15"	S61°E	126.0 feet
Elm	10"	S85.°W	34.9 feet
Steel sign post		West	0.5 feet

6. Quarter Corner Between Sections 23 and 24.  
Corner monument recovered in place and as described in survey of Section 24 by Jean F. Resvick (S-802) in 1977.

## Corner references recovered by Resvick:

Cedar stump	9"	S39°E	5.3 feet
Cedar	12"	S76°W	149.2 feet

## New corner references by Resvick:

White Birch	4"	S52°E	11.8 feet
Steel sign post		North	0.5 feet

7. Section Corner Common to Sections 13, 14, 23 and 24.  
Corner monument recovered in place and as described on Certified Land Corner Restoration form in the Forest County Records in 1974. D#105825.

8. Quarter Corner Between Sections 14 and 23.  
Corner monument recovered in place and as described on Certified Land Corner Restoration form in the Forest County Records in 1974. D#104382.

9. North Sixteenth Between Sections 23 and 24.  
Corner monument recovered in place and as described in survey of Section 24 by Jean F. Resvick (S-802) in 1977.

## Corner references recovered:

W. Birch stub	4"	S38°W	18.3 feet
W. Birch stub	3"	S58°W	11.0 feet
High point on Rock Outcrop-chiseled Square		S74°E	84.5 feet
Steel sign post		SW	0.6 feet

## New Corner references:

W. Birch	5"	S82°W	33.64 feet
Aspen	8"	N39°W	14.06 feet
Balsam	8"	N89°E	50.10 feet

CORNERS ESTABLISHED

1. North Sixteenth Corner Between Sections 22 and 23.  
Corner position established at the midpoint and on line between the West quarter corner and the Northwest Section corner of Section 23.

## Corner references:

Spruce	14"	S51°E	89.78 feet
Spruce	22"	S03°W	72.75 feet
Cedar	6"	S22°W	82.89 feet
Steel sign post		SE	1.05 feet

Stock No. 26273

Sheet 4 of 5

2. Center North Sixteenth Corner of Section 23.

Corner position established at the midpoint and on line between the North quarter corner and the Center quarter corner of Section 23.

## Corner references:

Balsam	6"	S81°W	41.01 feet
Balsam	7"	N43°W	29.91 feet
W. Birch	5"	N76°E	15.88 feet
Iron pipe	2"	N06°52'W	21.97 feet
Steel sign post		NE	1.0 foot

3. Center Quarter Corner of Section 23.

Corner position established at the intersection of the straight lines between opposing quarter corners on the perimeter of Section 23.

## Corner references:

Spruce	8"	N78°W	21.49 feet
Spruce	8"	N35°E	12.58 feet
Spruce	6"	S20°W	25.23 feet
Iron pipe	2"	S01°14'44"W	51.07 feet
Steel sign post		NW	1.0 foot

4. Center South Sixteenth Corner of Section 23.

Corner position established at the midpoint and on line between the South quarter corner and the Center quarter corner of Section 23.

## Corner references:

Aspen	6"	S23°W	14.96 feet
W. Birch	6"	N32°W	28.09 feet
W. Birch	6"	N80°E	52.79 feet
Steel sign post		SW	1.35 feet

5. East Sixteenth Corner Between Sections 23 and 26.

Corner position established at the midpoint and on line between the South quarter corner and the Southeast Section corner of Section 23.

## Corner references:

Poplar	13"	N86°W	32.69 feet
Balsam	9"	S22°E	39.21 feet
Spruce	7"	N68°E	45.44 feet
Steel sign post		SE	1.0 foot

6. Southeast Sixteenth Corner of Section 23.

Corner position is at the intersection of the straight lines between opposing sixteenth corners on the perimeter of the Southeast quarter of Section 23.

## Corner references:

Aspen	8"	S86°W	29.98 feet
Black Ash	4"	S33°E	6.62 feet
Aspen	8"	N10°W	15.74 feet
Steel sign post		SW	1.35 feet

7. Center East Sixteenth Corner of Section 23.

Corner position established at the midpoint and on line between the East quarter corner and the Center quarter corner of Section 23.

## Corner references:

Aspen	6"	S56°E	7.63 feet
Balsam	9"	N63°E	24.51 feet
Balsam	10"	N44°W	28.91 feet
Iron pipe	2"	S03°50'W	24.94 feet
Steel sign post		SE	1.7 feet

Stock No. 26273

Sheet 5 of 5

8. Northeast Sixteenth Corner of Section 23.

Corner position is at the intersection of the straight lines between opposing sixteenth corners on the perimeter of the Northeast quarter of Section 23.

## Corner references:

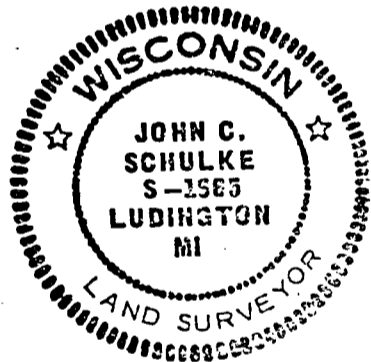
Aspen	5"	S36°E	119.57 feet
Iron pipe	2"	N02°12'W	36.2 feet
Steel sign post		SE	1.0 foot

## SURVEYOR'S AFFIDAVIT

State of Wisconsin)  
County of Forest )<sup>ss</sup>

I, John C. Schulke, a Cadastral Surveyor, and a Registered Land Surveyor in the State of Wisconsin, hereby certify that I have surveyed and subdivided Section 23, Township 41 North, Range 13 East, Fourth Principal Meridian, State of Wisconsin.

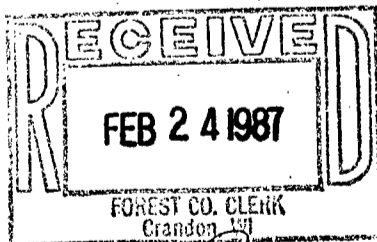
The plat map and survey notes herewith are a correct representation of the land surveyed and subdivided. I have surveyed and subdivided said section in accordance with the rules for the survey of the public lands and with the statutes of the State of Wisconsin.



John C. Schulke  
4604 South U.S.-31  
Ludington, MI 49431  
R.L.S. State of Wisconsin  
Date of Survey 1985  
Certificate S-1665

*John C. Schulke*

Plat ready for filing: *W. Frank Hulsey* District Ranger



*Dora C. James*  
Forest Co. Clerk