

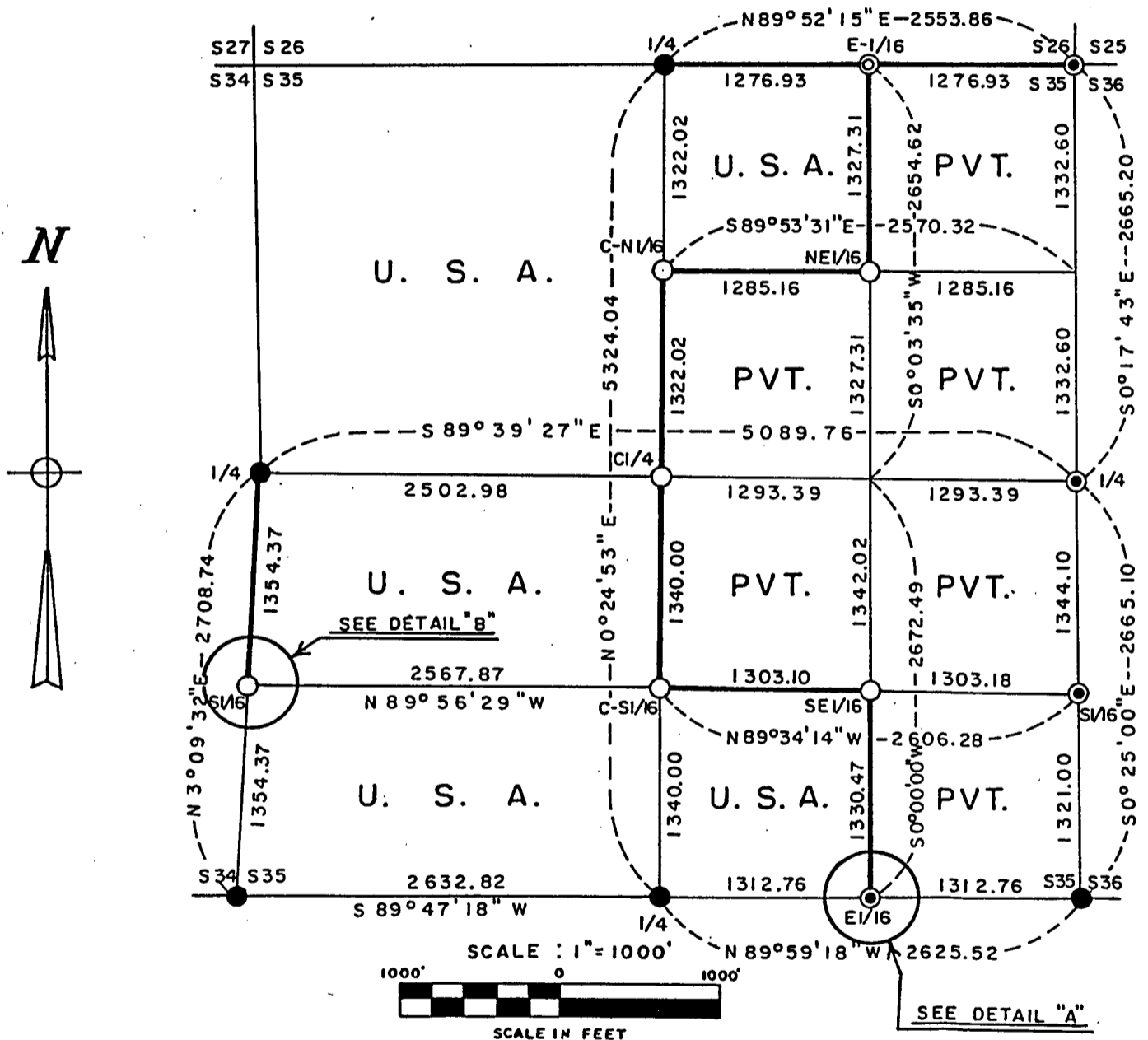
Stock No. 26273

FOREST CO SURVEYOR
 FILE # 41335-19831102
 DATE _____ BY _____

Sheet 1 of 8

PLAT OF SURVEY FOR CERTIFIED LAND CORNER RESTORATION AND ESTABLISHMENT

BEING THE CORNERS FOR THE NW 1/4 OF THE NE 1/4,
 THE NW 1/4, THE SW 1/4 AND THE SW 1/4 OF THE SE 1/4
 SECTION 35, T 41 N, R 13 E
 FOURTH PRINCIPAL MERIDIAN
 COUNTY OF FOREST, STATE OF WISCONSIN

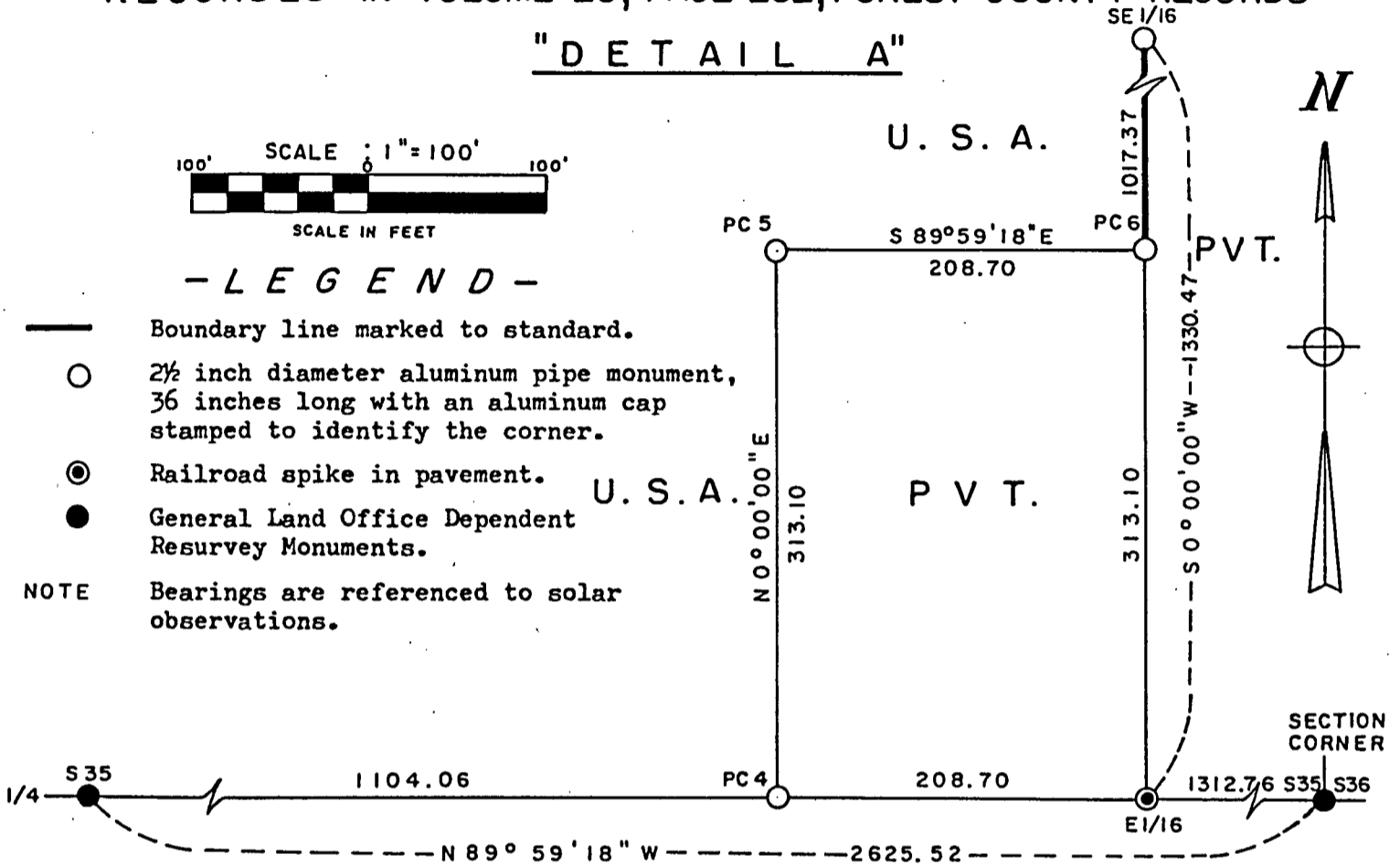


- L E G E N D -

- Boundary line marked to standard.
 - 2 1/2 inch diameter aluminum pipe monument, 36 inches long with an aluminum cap stamped to identify the corner.
 - ⊙ 2 1/2 inch diameter aluminum pipe monument, 60 inches long with an aluminum cap stamped to identify the corner.
 - General Land Office Dependent Resurvey Monuments.
 - ⊗ Railroad spike in pavement.
- NOTE Bearings are referenced to solar observations.

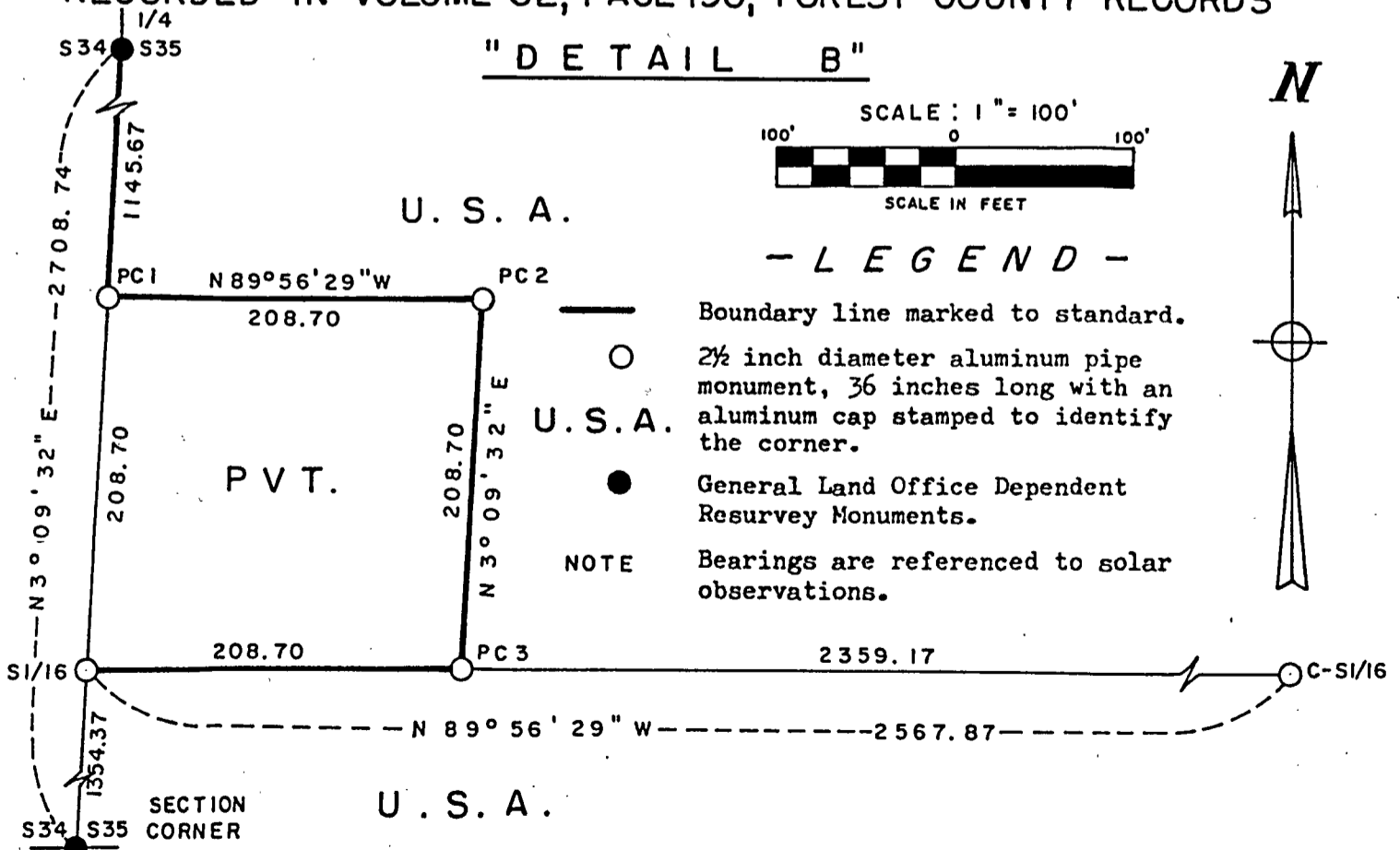
DEEDED EXCEPTION IN THE SW 1/4 OF THE SE 1/4 AS RECORDED IN VOLUME 20, PAGE 232, FOREST COUNTY RECORDS

"DETAIL A"



DEEDED EXCEPTION IN THE NW 1/4 OF THE SW 1/4 AS RECORDED IN VOLUME 62, PAGE 190, FOREST COUNTY RECORDS

"DETAIL B"



Stock No. 26273

Sheet 3 of 8

SURVEY NOTES

This survey was made by James L. Will, a registered Land Surveyor in the State of Wisconsin, for the U.S. Department of Agriculture, Forest Service, to establish and mark controlling subdivision corners of U.S. Government Land in Section 35, Township 41 North, Range 13 East, Fourth Principal Meridian, Forest County, Wisconsin.

The original Government survey of this township was made in 1865.

A dependent re-survey was made by the U.S. Department of the Interior General Land Office in 1942. The corners of the dependent re-survey of the perimeter of Section 35 were recovered as control for the subdivision survey of Section 35.

The U.S. Government acquired title to the lands in Section 35 in 1935.

The bearings between corner positions are true bearings as determined by reference to solar observations. The accuracy of this survey exceeds the State requirements of 1 in 3000.

The field notes and a copy of the Plat of Survey are on file in the Forest Supervisor's office in Rhineland, Wisconsin.

CORNERS RECOVERED AND RESTORED1. Section Corner Common to Sections 26, 25, 35 and 36.

Corner position is marked by a railroad spike in the pavement of State Trunk Highway "55".

Corner references recovered:

Witness Corner; 2½ inch diameter aluminum pipe monument with an aluminum cap stamped to identify the corner.

		Westerly		29.70 Feet
White Pine	27"	N 60°	E	89.76 Feet
Maple	20"	S 37°	E	101.70 Feet
Cedar	13"	S 40°	W	24.09 Feet
Maple	16"	N 61°	W	27.39 Feet

2. Quarter Corner Between Section 35 and 36.

Corner position is marked by a railroad spike in the pavement of State Trunk Highway "55".

Corner references recovered:

Witness Corner; 6 inch by 6 inch concrete monument with a brass cap stamped to identify the corner from the 1942 Dependent Resurvey.

		Westerly		26.40 Feet
Hemlock	19"	S 60°	E	86.46 Feet
Yellow Birch	13"	S 56°	W	21.12 Feet

3. Standard Section Corner Common to Sections 35 and 36.

Corner position is marked by a monument from the 1942 Dependent Resurvey.

Corner references recovered:

Maple	7"	N 60°	W	50.16 Feet
Yellow Birch	5"	N 73°	E	11.73 Feet
Yellow Birch	6"	S 4°	E	11.77 Feet
Ash	8"	S 52°	W	20.58 Feet
Steel sign post		East		2.0 Feet

Stock No. 26273

Sheet 4 of 8

4. Standard Quarter Corner to Section 35.

Corner position is marked by a monument from the 1942 Dependent Resurvey.

Corner references recovered:

Witness Corner (See #5 Below)	N 0°10'42" E	26.65 Feet
Maple	10" N 20° E	30.65 Feet
Hemlock	17" N 23° W	42.22 Feet

New corner references:

Maple	6" N 43°40' W	46.83 Feet
Maple	5" S 29°30' E	19.92 Feet

5. Witness Standard Quarter Corner to Section 35.

Corner position is marked by a monument from the 1942 Dependent Resurvey.

Corner references recovered:

Maple	14" S 76°45' W	4.95 Feet
Hemlock	17" N 54°45' W	21.45 Feet
Steel sign post	North	1.0 Feet

New corner references:

Maple	6" N 12° E	25.02 Feet
-------	------------	------------

6. Standard Section Corner Common to Sections 34 and 35.

Corner position is marked by a monument from the 1942 Dependent Resurvey.

Corner references recovered:

Witness Corner (See #7 Below)	N 0°13'40" E	26.24 Feet
White Pine	15" N 25° W	58.20 Feet
Black Spruce	7" (dead) N 39° E	51.17 Feet

New corner references:

Oak	9" S 46° E	28.43 Feet
Oak	16" N 64°30' E	58.10 Feet
Oak	7" S 63° W	79.17 Feet

7. Witness Standard Section Corner Common to Sections 34 and 35.

Corner position is marked by a monument from the 1942 Dependent Resurvey.

Corner references recovered:

White Pine	15" N 46° W	36.96 Feet
Black Spruce	7" (dead) N 67° E	34.22 Feet
Steel sign post	Northwest	1.0 Feet

New corner references:

Oak	9" S 22° E	50.26 Feet
Oak	16" S 89° E	52.48 Feet

8. Quarter Corner Between Sections 34 and 35.

Corner position is marked by a monument from the 1942 Dependent Resurvey.

Corner references recovered:

Yellow Birch	17" S 49° E	29.04 Feet
Yellow Birch	18" N 69° E	45.66 Feet
Oak	13" N 8° W	22.41 Feet
Steel sign post	S 80° W	0.75 Feet

Stock No. 26273

Sheet 5 of 8

9. Quarter Corner Between Sections 26 and 35.

Corner position is marked by a monument from the 1942 Dependent Resurvey.

Corner references recovered:

Cedar	16"	N 41°30' E	27.06 Feet
Tamarack	13"	S 53°45' W	50.49 Feet

New corner references:

Cedar	12"	S 16°00' W	7.40 Feet
Steel sign post		Southwest	1.0 Feet

10. South Sixteenth Corner Between Sections 35 and 36.

Corner position is marked by a railroad spike in the pavement of State Trunk Highway "55".

Corner references as described on the Plat of Survey For Certified Land Corner Restoration and Establishment of Section 36 as surveyed in 1981 by William B. Cochrane.

11. East Standard Sixteenth Corner to Section 35.

Corner position is marked by a railroad spike in the pavement of Forest Road #2206, 2.0 Feet South of the centerline.

New corner references:

Norway Pine	10"	N 53°30' W	64.70 Feet
Spruce	7"	N 51°15' E	110.59 Feet
Iron rod	3/4" diameter	N 9°03' W	23.48 Feet

CORNERS ESTABLISHED1. South Sixteenth Corner Between Sections 34 and 35.

Corner position established at the midpoint and on line between the West quarter corner and the Southwest Standard Section corner of Section 35.

Corner references:

Maple	12"	N 45°50' E	22.50 Feet
Maple	11"	S 58°15' E	4.32 Feet
Maple	9"	S 52°40' W	30.46 Feet
Steel sign post		Southeast	1.0 Feet
Fence corner		S 89°15' W	42.0 Feet
Old East-West Fenceline		South	6.5 Feet

2. East Sixteenth Corner Between Sections 26 and 35.

Corner position established at the midpoint and on line between the North quarter corner and the Northeast Section corner of Section 35.

Corner references:

Cedar	13"	N 33°30' W	16.54 Feet
Cedar	11"	S 1°30' E	20.99 Feet
Cedar	12"	N 45°30' E	41.97 Feet
Steel sign post		Southwest	1.0 Feet

Stock No. 26273

Sheet 6 of 8

3. Northeast Sixteenth Corner of Section 35.

Corner position is at the intersection of the straight lines between opposing sixteenth corners on the perimeter of the Northeast quarter of Section 35.

Corner references:

Maple	11"	S 67°00' W	24.43 Feet
Maple	7"	N 42°00' W	14.65 Feet
Yellow Birch	8"	N 81°00' E	22.93 Feet
Steel sign post		Northwest	0.95 Feet

4. Center North Sixteenth Corner of Section 35.

Corner position established at the midpoint and on line between the North quarter corner and the Center quarter corner of Section 35.

Corner references:

Maple	5"	N 32°00' E	48.10 Feet
Maple	4"	N 76°00' E	17.28 Feet
White Birch	8"	N 34°00' W	43.64 Feet
Steel sign post		Northwest	1.0 Feet

5. Center Quarter Corner of Section 35.

Corner position established at the intersection of the straight lines between opposing quarter corners on the perimeter of Section 35.

Corner references:

Maple	7"	N 22°35' E	39.04 Feet
Maple	10"	S 57°20' E	29.35 Feet
Hemlock	10"	N 86°30' W	9.42 Feet
Steel sign post		West	1.0 Feet

6. Center South Sixteenth Corner of Section 35.

Corner position established at the midpoint and on line between the South quarter corner and the Center quarter corner of Section 35.

Corner references:

Maple	9"	S 38°00' W	27.13 Feet
Maple	11"	S 20°30' E	9.39 Feet
Maple	10"	N 23°15' E	25.20 Feet
Steel sign post		Southwest	1.3 Feet

7. Southeast Sixteenth Corner of Section 35.

Corner position is at the intersection of the straight lines between opposing sixteenth corners on the perimeter of the Southeast quarter of Section 35.

Corner references:

Maple	7"	S 84°30' E	22.90 Feet
Maple	6"	N 61°15' W	36.56 Feet
Maple	5"	S 13°00' W	51.44 Feet
Yellow Birch 26" (dead)		S 44° W	37.00 Feet
North-South Fenceline		West	4.0 Feet
Old Wood post		S 21°20' W	12.10 Feet
Steel sign post		Southwest	1.0 Feet

Stock No. 26273

Sheet 7 of 8

8. Property Corner 1 in Section 35.

Corner position is at the Northwest corner of the deeded exception in the Northwest quarter of the Southwest quarter as recorded in Volume 62, Page 190, Forest County Records.

Corner references:

Oak	8"	N 9°00' E	14.52 Feet
Maple	12"	N 82°30' W	30.76 Feet
Steel sign post		Northeast	1.0 Feet
East-West Fenceline		South	17.0 Feet

9. Property Corner 2 in Section 35.

Corner position is at the Northeast corner of the deeded exception in the Northwest quarter of the Southwest quarter as recorded in Volume 62, Page 190, Forest County Records.

Corner references:

Maple	9"	N 17°30' W	15.17 Feet
Maple	7"	S 84°00' E	13.70 Feet
Steel sign post		Northeast	1.0 Feet
East-West Fenceline		West 64 Feet and South 28 Feet	

10. Property Corner 3 in Section 35.

Corner position is at the Southeast corner of the deeded exception in the Northwest quarter of the Southwest quarter as recorded in Volume 62, Page 190, Forest County Records.

Corner references:

Maple	8"	S 80°00' W	16.70 Feet
Yellow Birch	12"	S 11°15' E	2.27 Feet
Steel sign post		Southeast	1.90 Feet

11. Property Corner 4 in Section 35.

Corner position is at the Southwest corner of the deeded exception in the Southwest quarter of the Southeast quarter as recorded in Volume 20, Page 232, Forest County Records.

Corner references:

Double Maple	8"	S 64°30' E	45.79 Feet
Maple	6"	S 65°30' W	39.65 Feet
Centerline of East-West Forest Road #2206		North	2.0 Feet

12. Property Corner 5 in Section 35.

Corner position is at the Northwest corner of the deeded exception in the Southwest quarter of the Southeast quarter as recorded in Volume 20, Page 232, Forest County Records.

Corner references:

Hemlock	8"	N 28°00' W	23.15 Feet
Yellow Birch	8"	S 59°00' W	24.80 Feet
Steel sign post		Northwest	1.0 Feet

Stock No. 26273

Sheet 8 of 8

13. Property Corner 6 in Section 35.

Corner position is at the Northeast corner of the deeded exception in the Southwest quarter of the Southeast quarter as recorded in Volume 20, Page 232, Forest County Records.

Corner References:

Maple	7"	N 4° W	44.51 Feet
Maple	11"	N 75° W	39.57 Feet
Steel sign post		Northwest	0.5 Feet

SURVEYOR'S AFFIDAVIT

State of Wisconsin))
County of Forest) ss

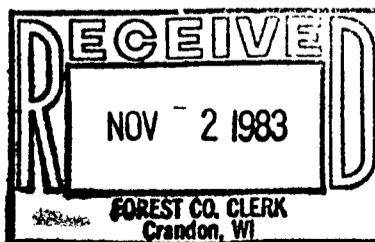
I, James L. Will, a Cadastral Surveyor, and a registered land surveyor in the State of Wisconsin, hereby certify that I have surveyed and subdivided Section 35, Township 41 North, Range 13 East, Fourth Principal Meridian, State of Wisconsin.

The plat map and survey notes herewith are a correct representation of the land surveyed and divided. I have surveyed and subdivided said section in accordance with the rules for the survey of the public lands and with the statutes of the State of Wisconsin.



James L. Will
James L. Will
Genisot & Associates, Inc.
R.L.S. State of Wisconsin
Certificate S-1410

Date of Survey: 1983



Dora C. James