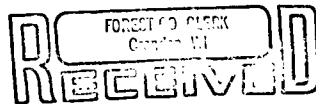


FOREST CO SURVEYOR

FILE # 41336-1981

DATE _____ BY _____

PLAT OF SURVEY FOR CERTIFIED LAND
CORNER RESTORATION AND ESTABLISHMENT

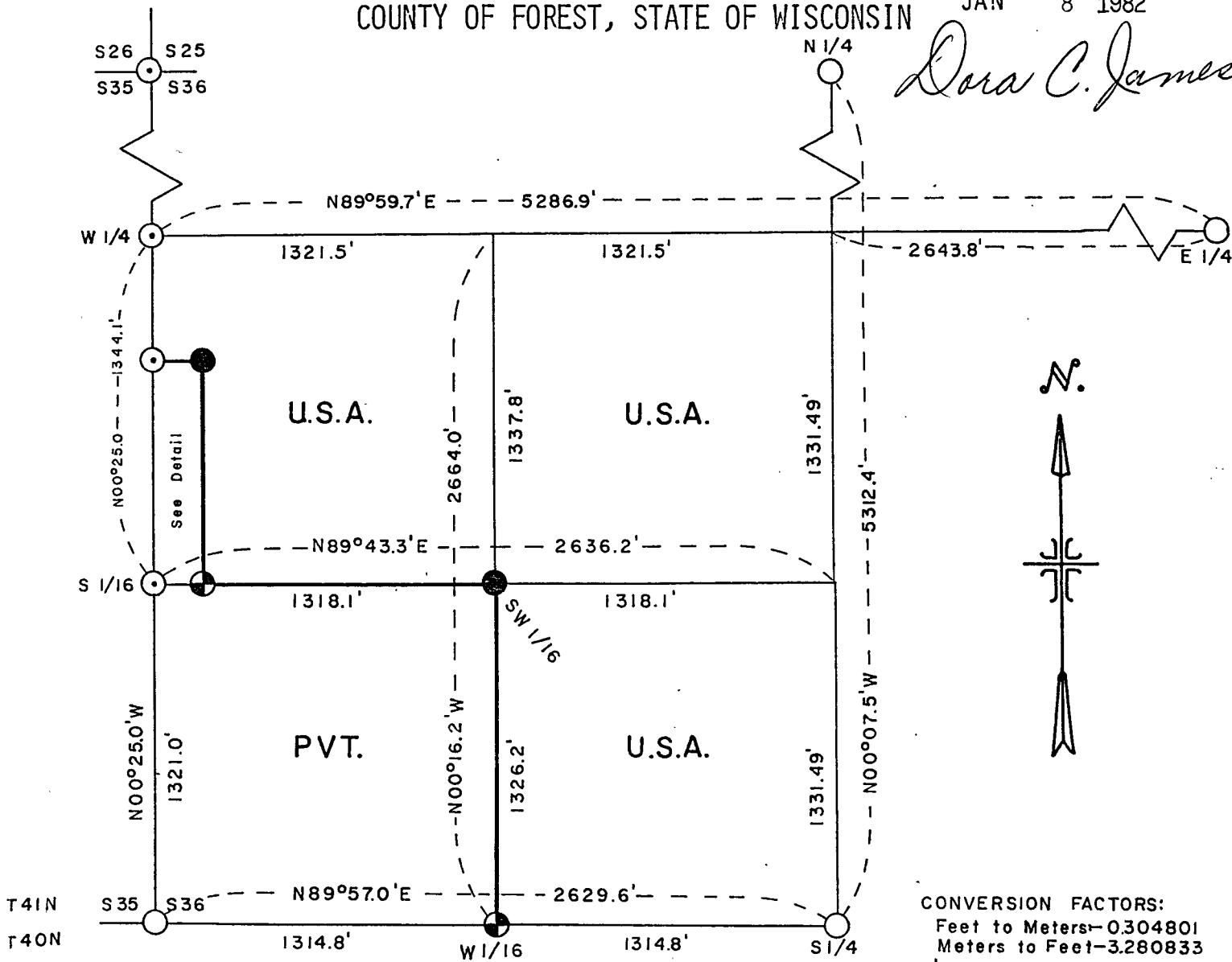


BEING THE CORNERS FOR THE SW¹/₄ OF THE SW¹/₄
AND THE EXCEPTION IN THE NW¹/₄ OF THE SW¹/₄
SECTION 36, T41N, R13E, FOURTH PRINCIPAL MERIDIAN

COUNTY OF FOREST, STATE OF WISCONSIN

JAN 8 1982

Dora C. James



CONVERSION FACTORS:
Feet to Meters-0.304801
Meters to Feet-3.280833
600' 0 600'

LEGEND

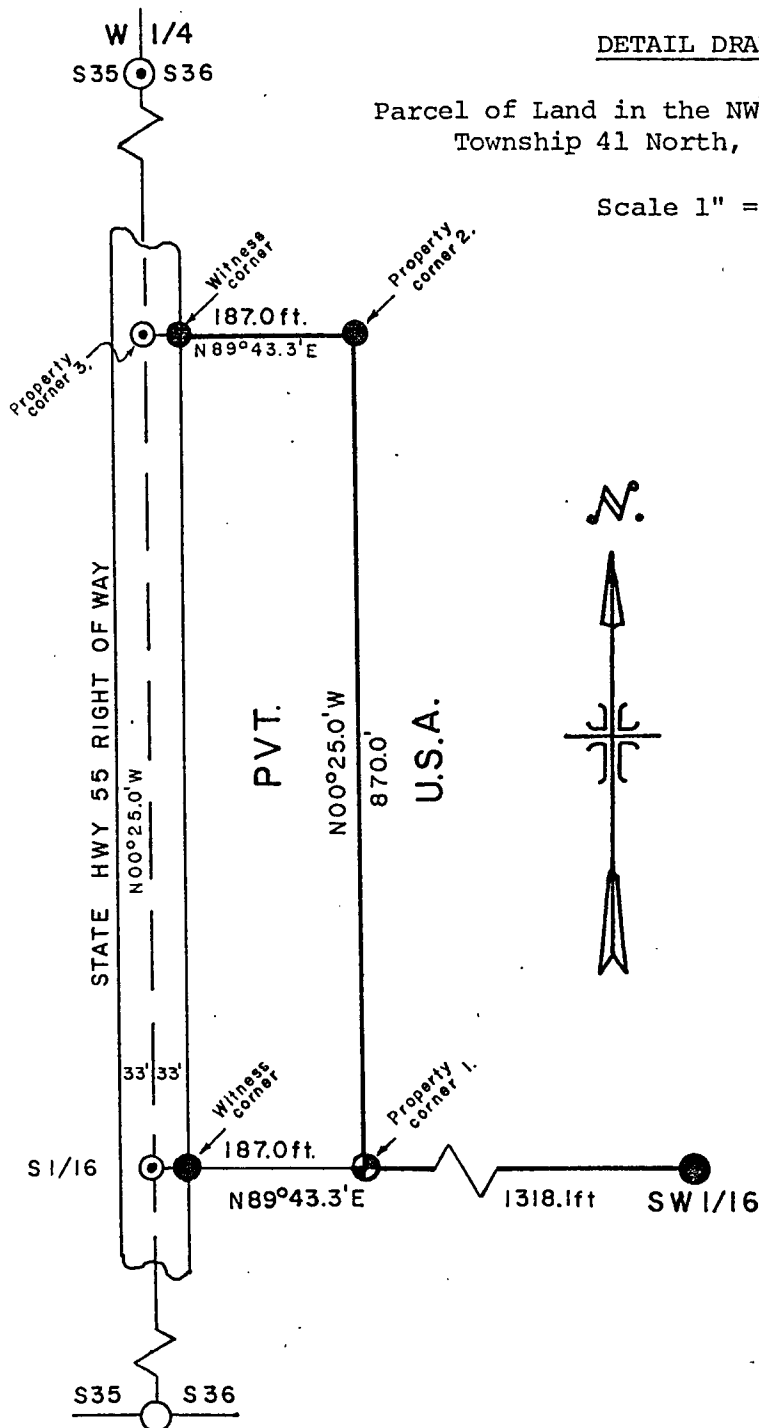
- Boundary line marked to standard.
- ⊙ Corner position marked with a railroad spike in road.
- 2 1/2 inch diameter aluminum pipe monument 30 inches long with an aluminum cap stamped to identify the corner.
- ⊕ 2 1/2 inch diameter aluminum pipe monument 5 feet long with an aluminum cap stamped to identify the corner.
- G.L.O. Dependent Resurvey Monument.

Note: Bearings are referenced to the dependent resurvey bearing between the SW section corner and the S¹/₄ corner.

DETAIL DRAWING

Parcel of Land in the NW $\frac{1}{4}$ SW $\frac{1}{4}$, Section 36,
Township 41 North, Range 13 East

Scale 1" = 200'



SURVEY NOTES

This survey was made by the U.S. Department of Agriculture Forest Service to establish and mark controlling subdivision corners of U.S. Government land.

The original Government subdivision of this township was made in 1865. A dependent resurvey was made by the U.S. Department of the Interior General Land Office in 1942. The corners of the dependent resurvey on the perimeter of Section 36 were recovered as control for the subdivision survey of Section 36. All U.S. Government land in Section 36 was acquired in 1938.

The exception parcel was surveyed from the recorded deed description, Document No. 77311, Vol. 84, Pg. 484 Deeds, March 28, 1975.

The south sixteenth between Sections 35 and 36 was set on line between the southwest section corner and the west quarter corner of Section 36 using the distance as recorded on the original plat of Alvin which was surveyed May 21, 1917 by I.R. Ritter and recorded July 19, 1917 by E.O. Woodbury.

The center quarter position was not monumented by this survey because of the difficult terrain and brush that would have to be removed and the additional expenses that would be incurred by the U.S. Forest Service to locate the position.

The U.S. Government acquired title to the lands in Section 36 in 1935, 1938 and exchanged part of the NWSW into private ownership in 1954.

Stock No. 26273

Sheet 3 of 5

CORNERS RECOVERED1. Section Corner common to 25, 26, 35, 36.

Corner position was reset using dependent resurvey record distance and bearings from bearing trees and marked by a railroad spike in the road.

Corner references:

Witness corner west of section corner		29.70 Feet
White Pine 27"	N60°E	89.76 Feet
Maple 20"	S37°E	101.70 Feet
Cedar 13"	S40°W	24.09 Feet
Maple 16"	N61°W	27.39 Feet
Section Corner	East	29.70 Feet

2. Quarter Corner between Sections 25 and 36.

Corner position is marked by a monument from the 1942 dependent resurvey.

Corner references recovered:

Yellow Birch 17"	N12°W	62.04 Feet
Maple 22"	S49°E	63.03 Feet

New corner references:

Steel Sign Post	South	1.0 Foot
-----------------	-------	----------

3. Section Corner common to Sections 25, 30, 31, 36.

Corner position is marked by a monument from the 1942 dependent resurvey.

New corner references:

White Birch 11"	N48°W	103.35 Feet
Red Pine 9"	N20°E	14.38 Feet
Red Pine 10"	S32°E	62.55 Feet
Spruce 9"	S78°W	51.98 Feet

4. Quarter Corner between Sections 31 and 36.

Corner position is marked by a monument from the 1942 dependent resurvey.

Corner references recovered:

Poplar Stump	N74°E	16 Links
Poplar Stump	S81°W	33 Links

New corner references:

Maple 7"	N31°E	31.39 Feet
Maple 8"	N69°W	9.35 Feet

5. Standard Quarter Corner to Section 36.

Previously recorded Document No. 102391.

6. Standard Section Corner common to Sections 35, 36.

Previously recorded Document No. 113318.

New corner references:

Ash 8"	S52°W	20.58 Feet
Steel Sign Post	East	2.0 Feet

Stock No. 26273

Sheet 4 of 5

7. Quarter Corner between Sections 35 and 36.

Corner position is in Highway 55.

Corner references:

Witness Corner West of Quarter Corner		26.40 Feet
Hemlock 19"	S60°E	86.46 Feet
Yellow Birch 13"	S56°W	21.12 Feet

CORNERS ESTABLISHED1. West Sixteenth Standard Corner of Section 36.

Corner position is established at mid-point and on line between the southwest section corner and the south quarter corner of Section 36.

Corner references:

Tamarack 21"	N55°E	28.72 Feet
Balsam 5"	N05°W	12.27 Feet
Steel Sign Post	Southeast	.50 Foot

2. Southwest Sixteenth Corner of Section 36.

Corner position established on the intersection of the straight line between opposing sixteenth corner positions on the perimeter of the southwest quarter of the section.

Corner references:

Aspen 8"	N86°E	62.90 Feet
Aspen 5"	S64°E	57.42 Feet
Steel Sign Post	Northeast	.50 Foot

3. South Sixteenth between Sections 35 and 36.

Corner position established on a line between the southwest section corner and the west quarter corner of Section 36 and at the recorded distance as set by I.R. Ritter in 1917. Corner position is marked by a railroad spike in Highway 32.

Corner references:

Witness Corner 33.0 feet N89°43.3'E of Sixteenth Corner		
House Corner	S76°E	16.0 Feet

4. Property Corner 1 of Section 36.

Corner position is on line between southwest sixteenth corner and the south sixteenth between Sections 35 and 36, 220 feet N89°43.3'E of the south sixteenth and 1098.10 feet S89°43.3'W of the southwest sixteenth.

Corner references:

Hemlock 6"	N06°E	25.68 Feet
Hemlock 9"	N43°E	22.79 Feet
Steel Sign Post	Northeast	.50 Foot

5. Property Corner 2 of Section 36.

Corner position is 870 feet N00°25'W of Property Corner 1.

Corner references:

Maple 8"	N53°E	9.88 Feet
Maple 9"	S14°E	22.48 Feet
Steel Sign Post	East	1 Foot

Stock No. 26273

Sheet 5 of 5

6. Property Corner 3 Section 36.

Corner position is on line between the south sixteenth and west quarter corner between Sections 35 and 36 and 220 feet S89°43.3'W of property corner 2. Corner is marked by a railroad spike in Highway 55.

Corner references:

Witness Corner 33.0 feet N89°43.3'E

Maple 6"

S28°E

3.77 Feet

Maple 12"

N17°W

13.46 Feet

Steel Sign Post

Northeast

0.30 Feet

SURVEYOR'S AFFIDAVIT

State of Wisconsin)
County of Forest) ss

I, William B. Cochrane, Cadastral Surveyor, U.S. Forest Service, and a registered land surveyor in the State of Wisconsin, hereby certify that I have surveyed and subdivided Section 36, Township 41 North, Range 13 East, Fourth Principal Meridian, State of Wisconsin.

The plat map and survey notes herewith are a correct representation of the land surveyed and divided. I have surveyed and subdivided said section in accordance with the rules for the survey of the public lands and with the statutes of the State of Wisconsin.



William B. Cochrane
Cadastral Surveyor, U.S. Forest Service
R.L.S. State of Wisconsin
Certificate S-1107

Date of Survey: 1981