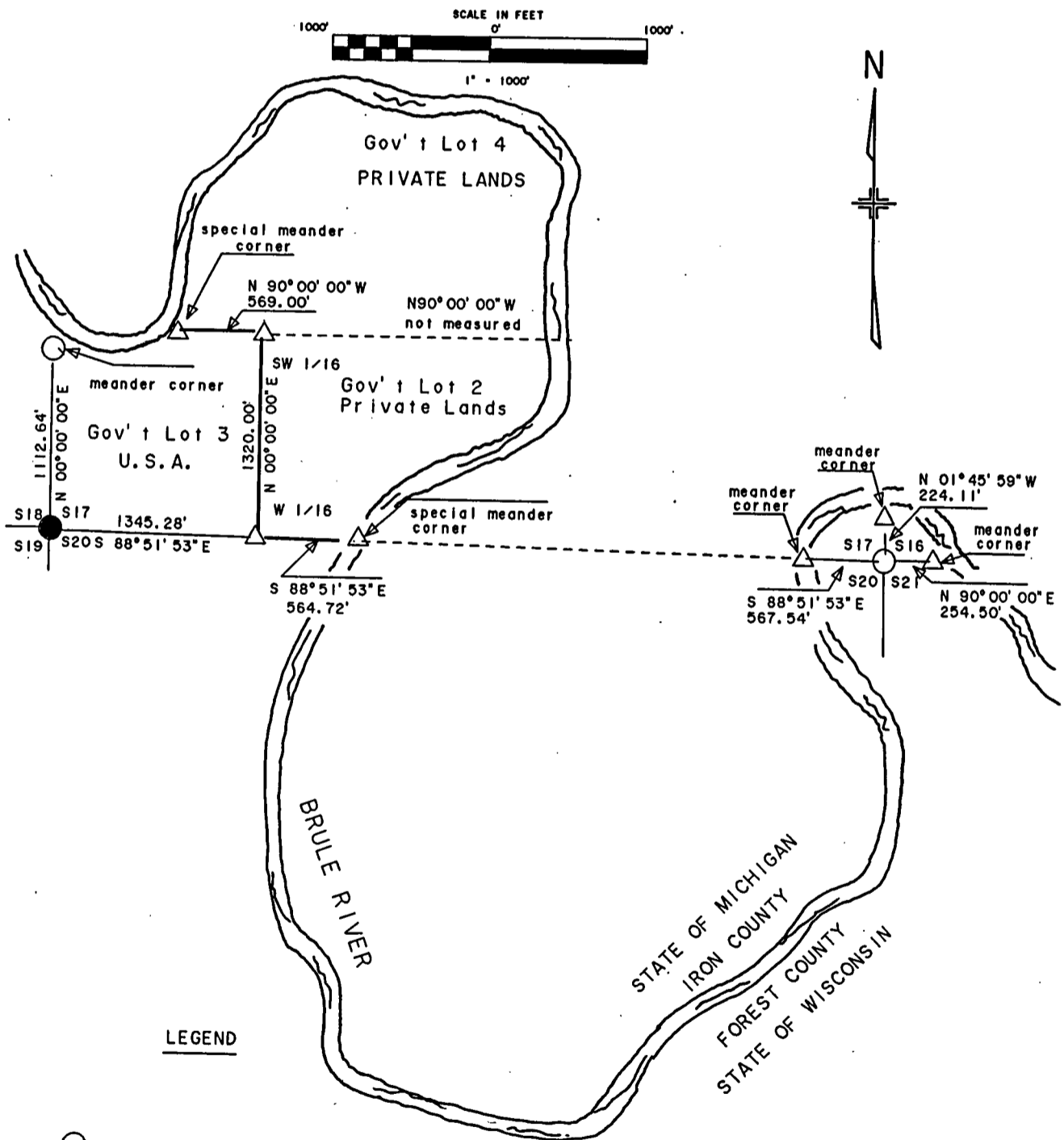


PLAT OF SURVEY FOR CERTIFIED LAND
 CORNER RESTORATION AND ESTABLISHMENT
 BEING THE CORNERS FOR GOVERNMENT LOT 3
 AND THE CORNERS ON THE PERIMETER OF THE SECTION
 SECTION 17, TOWNSHIP 41 NORTH RANGE 14 EAST
 FOURTH PRINCIPAL MERIDIAN, FOREST COUNTY,
 STATE OF WISCONSIN



LEGEND

- 2 1/2 Inch Diameter Aluminum Pipe Monument 36 Inches Long
- △ 1 Inch Diameter Aluminum Pipe Monument 36 Inches Long
- 2 1/2 Inch Diameter Galvanized Iron Pipe Monument 60 Inches Long with a Brass Cap
- Boundary Line Marked To Standard



Stock No. 26273

page 2 of 4

SECTION 17 TOWNSHIP 41 NORTH RANGE 14 EAST

This survey was made by the U.S. Department of Agriculture Forest Service for the purpose of recovering, restoring, establishing, marking and perpetuating the corners and boundary lines of U.S. Government land on the perimeter and within Section 17 Township 41 North Range 14 East, Fourth Principal Meridian, Forest County State of Wisconsin as shown on the Plat Map herewith.

The U.S. Government land within Section 17 was acquired in 1935.

The bearings between corner positions are true bearings determined by Global Positioning Satellite observations. The accuracy of this survey exceeds the State of Wisconsin requirement for closure of 1 part in 3,000. Corners recovered or established by this survey are marked as described in the map legend. Each monumented corner is referenced to blazed, scribed, painted and tagged bearing trees or reference objects. Tie bearings to the trees are magnetic and corrected for declination.

A request was made to the Bureau of Land Management to review this survey to assure that proper procedures were followed.

The field notes and a copy of the Plat of Survey are on file at the Forest Service Supervisor's office in Rhinelander, WI. And the District Rangers office in Florence, Wisconsin.

CORNERS RECOVERED AND RESTORED

1. Southwest Section Corner.

Corner position recovered and restored from original survey evidence in 1964 by Jean Resvick, U.S. Forest Service Land Surveyor. Recorded in Book 2 of Plats, Page 24 as Document No. 90018.

Corner references recovered:

Jack Pine	16"	S58°E	17.85 ft
Spruce	(dead)	S25°W	19.75 ft
Jack Pine	10"	N50°W	37.45 ft
W. Pine	(dead)	N10°W	42.70 ft
Wood sign post		Northwest	1.00 ft

New Corner references:

Jack Pine	11"	N35°E	25.23 ft
Spruce	7"	S24°W	21.28 ft

2. Southeast Section Corner.

Corner position restored by using proportionate methods and three way ties to the Brule River.

Corner references :

Maple	6"	S44°W	30.34 ft
Maple	7"	N39°W	13.38 ft
Steel sign post		Southwest and alongside.	



Stock No. 26273

3. Meander corner between sections 17 and 20.

Corner position restored at high water mark on the east bank of the Brule River and on the Section Line between the Southwest and Southeast Section Corners.

Corner references:

R. Maple	5"	N70°E	62.44 ft
Cedar	16"	N88°E	44.22 ft
Steel sign post		West	1.10 ft

4. Meander Corner between Sections 17 and 18.

Corner position restored at high water mark and on the Section Line between the Southwest Section corner and on a true north bearing. to the right bank of the Brule River.

Corner references:

B. Ash	5"	S10°E	5.78 ft
Maple	3"	N77°W	6.26 ft
Steel sign post		North	1.00 ft

CORNERS ESTABLISHED

1. West Sixteenth Corner between sections 17 and 20.

Corner position established at proportionate distance and on line between the Southwest Section Corner and the Meander Corner between sections 17 and 20.

Corner references:

Spruce	7"	N86°E	25.65 ft
Maple	6"	N15°W	9.64 ft
Steel sign post		South	1.01 ft

2. Southwest Sixteenth Corner.

Corner position established on a true North bearing and at 1320 feet north of the West Sixteenth Corner between Sections 17 and 20.

Corner references:

Maple	8"	S37°E	22.88 ft
R. Pine	20"	S88°W	34.54 ft
Steel sign post		Northeast	0.83 ft

3. Special Meander Corner

Corner position established at high water mark and on the west end of the line between Government lots 2 and 4.

Corner references:

B. Cherry	9"	S29°E	7.55 ft
R. Pine	27"	S43°W	28.75 ft
Steel sign post		West	0.64 ft



Stock No. 26273

SURVEYOR'S AFFIDAVIT

State of Wisconsin)

County of Forest)

I William B. Cochrane, Land Surveyor, U.S. Forest Service and a registered Land Surveyor in the State of Wisconsin, hereby certify that I have surveyed and subdivided Section 17, Township 41 North, Range 14 East, Fourth Principal Meridian, State of Wisconsin. I have surveyed and subdivided said section in accordance with the rules for the survey of the public lands and statutes of the State of Wisconsin.

The plat map and survey notes herewith are a correct representation of the land surveyed and divided

William B. Cochrane
Land Surveyor, U.S.D.A. Forest Service
R.L.S. State of Wisconsin
Certificate #S-1107

Date of Survey: 1996

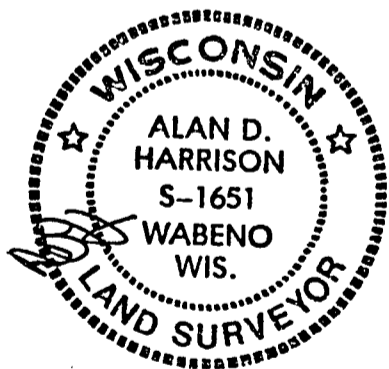
Survey requested by:

C. D. [Signature]
District Ranger

12/15/97
Date

NOTICE

William B. Cochrane passed away prior to filing of this plat. I Alan Harrison a registered Land Surveyor, U.S. Forest Service and a registered Land Surveyor in the State of Wisconsin, have reviewed the field work, office computations, and correspondence pertaining to this survey and am signing in his behalf.



Alan D. Harrison
Alan Harrison
Land Surveyor, U.S. Forest Service
R.L.S. State of Wisconsin
Certificate # S-1651

