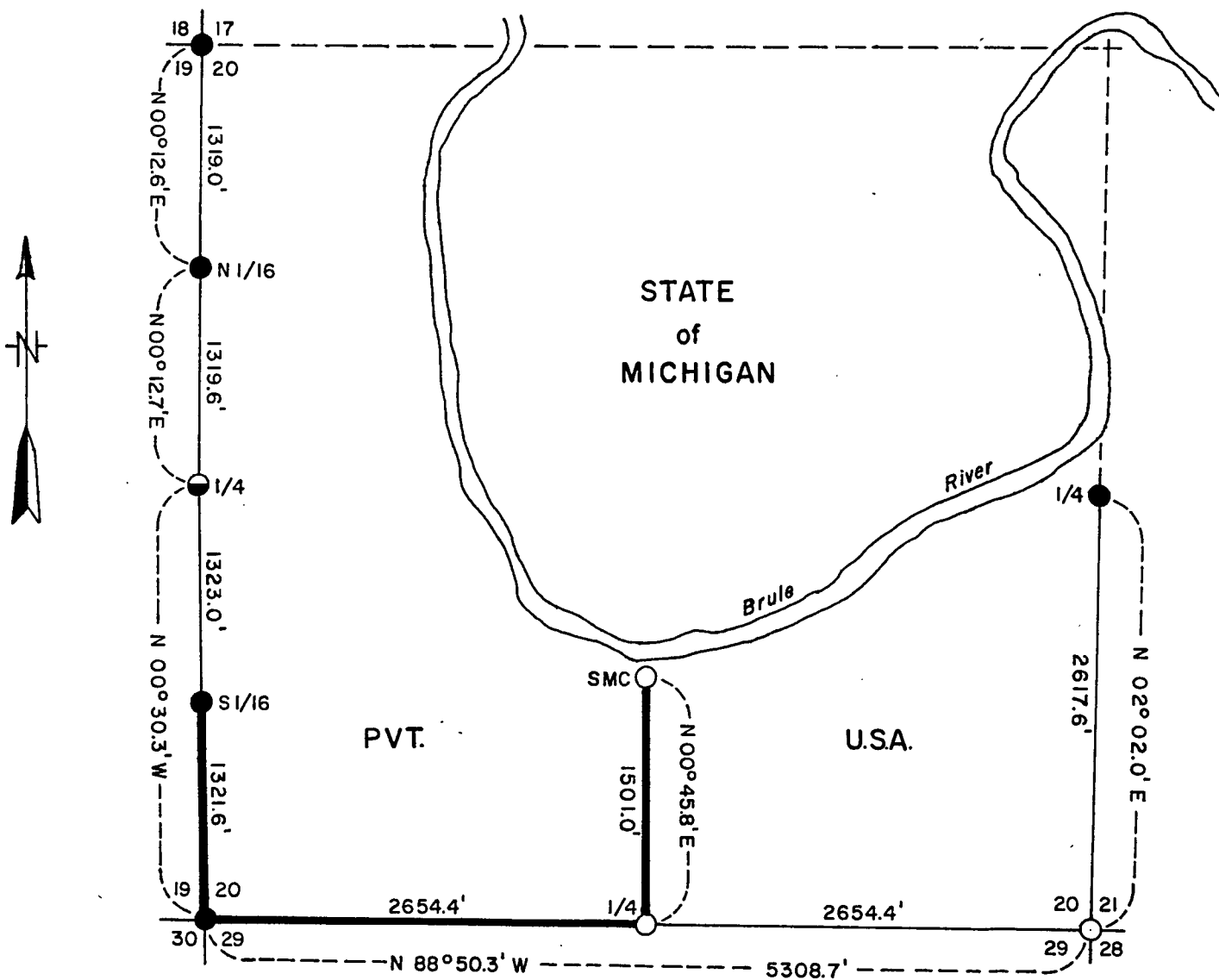
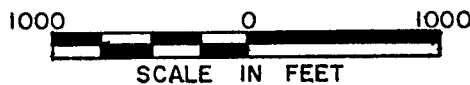


PLAT OF SURVEY FOR CERTIFIED LAND CORNER RESTORATION & ESTABLISHMENT

Being the Corners for the Fractional Section, Section 20
Township 41 North, Range 14 East, Fourth Principal Meridian
FOREST COUNTY, WISCONSIN



LEGEND

- 2 1/2" Diameter Galvanized Pipe Monument 5' Long Filled with Concrete, with Brass Cap.
- 6" Diameter Concrete Monument 4' Long with Brass Cap.
- 2 1/2" Diameter Aluminum Pipe Monument 3' Long with an Aluminum Cap.
- Boundary Line Marked to Standard.



Stock No. 26273

Sheet 2 of 4

SURVEY NOTES

This survey of Section 20 was made by the U.S. Department of Agriculture, Forest Service, to establish and mark controlling subdivision corners of U.S. Government land.

The original Government subdivision of this township was made in 1865. Subsequent corner restoration was done in 1962 and 1963.

The U.S. Government acquired title to the lands in Section 20 in 1911 and 1923.

CORNERS RECOVERED AND RESTORED1. Section corner common to Sections 17, 18, 19 and 20

See recorded plat of Section 19, T41N, R14E, recorded 1963.

Corner references recovered:

Jack Pine 16"	S58°30'E	17.85 Ft.
Spruce (Dead)	S25°W	19.75 Ft.
Jack Pine 10"	N50°30'W	37.45 Ft.
White Pine (Dead)	N01°30'W	42.70 Ft.

New corner references:

Jack Pine 11"	N35°E	25.23 Ft.
Spruce 7"	S25°W	21.28 Ft.

2. North Sixteenth corner between Sections 19 and 20

See recorded plat of Section 19, T41N, R14E, recorded 1963.

Corner references recovered:

Red Pine 16"	N77°W	53.00 Ft.
Red Pine 13"	N52°E	16.30 Ft.

3. Quarter corner between Sections 19 and 20

See recorded plat of Section 19, T41N, R14E, recorded 1963.

Corner references recovered:

Power Pole #L-35-47-1920	S15°51'W	75.57 Ft.
Power Pole #NT-40-N63-1844	N34°49'W	36.91 Ft.

4. South Sixteenth corner between Sections 19 and 20

See recorded plat of Section 19, T41N, R14E, recorded 1963.

Corner references recovered:

Aspen 9"	S67°30'E	5.90 Ft.
White Pine 8"	S37°W	29.63 Ft.
Spruce 8"	N79°30'W	17.78 Ft.

5. Section corner common to Sections 19, 20, 29, and 30

See recorded plat of Section 19, T41N, R14E, recorded 1963.

Corner references recovered:

Spruce 6"	N34°E	22.45 Ft.
W. Birch 6"	S74°E	19.90 Ft.
W. Pine 7"	S24°W	14.50 Ft.
W. Pine 6"	N75°30'W	17.70 Ft.

Stock No. 26273

Sheet 3 of 4

6. Quarter corner between Sections 20 and 29

Corner position is restored at mid-point and on line between the southwest and southeast section corners of Section 20.

Corner references:

Sugar Maple 6"	S83°30'E	7.34 Ft.
Sugar Maple 8"	S54°W	10.94 Ft.
Steel Sign Post	Southeast	1.0 Ft.

7. Section corner common to Sections 20, 21, 28 and 29

See recorded survey plat of Section 28, T41N, R14E.

Corner references recovered:

Sugar Maple 6"	N36°E	32.00 Ft.
Balsam 11"	S03°E	30.54 Ft.
Aspen 13"	S62°W	55.04 Ft.
Aspen 11"	N67°W	5.53 Ft.
Steel Sign Post	Northeast	1.0 Ft.

8. Quarter corner between Sections 20 and 21

See Certified Land Corner Restoration Certificate October 23, 1970.

Corner references recovered:

Sugar Maple 7"	N48°E	16.65 Ft.
Yellow Birch 19"	S87°E	15.65 Ft.
Cedar 20"	N42°W	17.68 Ft.
Steel Sign Post	Southeast	1.0 Ft.

CORNERS ESTABLISHED1. Special Meander Corner on North-South Center Line of Section 20

Corner position is established on a mean bearing between the bearing of the south half of the West Section Line and the bearing of the south half of the East Section Line. N00°45.8'E, 1501.0 feet from the South Quarter corner of Section 20.

Corner references:

Sugar Maple 7"	S82°E	22.25 Ft.
White Birch 8"	S09°E	16.05 Ft.
Steel Sign Post	Southeast	0.50 Ft.

Stock No. 26273

SURVEYOR'S AFFIDAVIT

State of Wisconsin)
County of Forest) ss

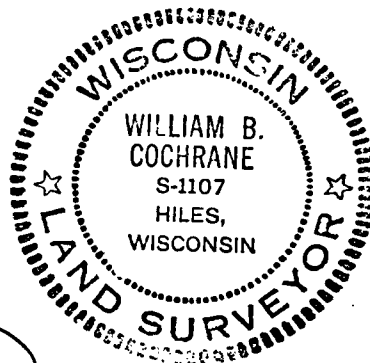
I, William B. Cochrane, Land Surveyor, USDA Forest Service, and a registered land surveyor in the State of Wisconsin, hereby certify that I have surveyed the parcel of land as shown on this plat in Section 20, Township 41 North, Range 14 East, Fourth Principal Meridian, State of Wisconsin.

The plat map and survey notes herewith are a correct representation of the land surveyed and divided. I have surveyed and subdivided said section in accordance with rules for the survey of public lands and with the statutes of the State of Wisconsin.

William B. Cochrane

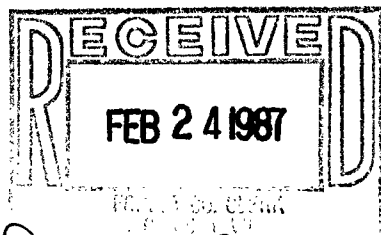
Land Surveyor, U.S.D.A. Forest Service
R.L.S. State of Wisconsin
Certificate S-1107

Date of Survey: 1982



Plat ready for filing: _____

[Signature]
District Ranger



Dora C. James
Forest Co. Clerk