



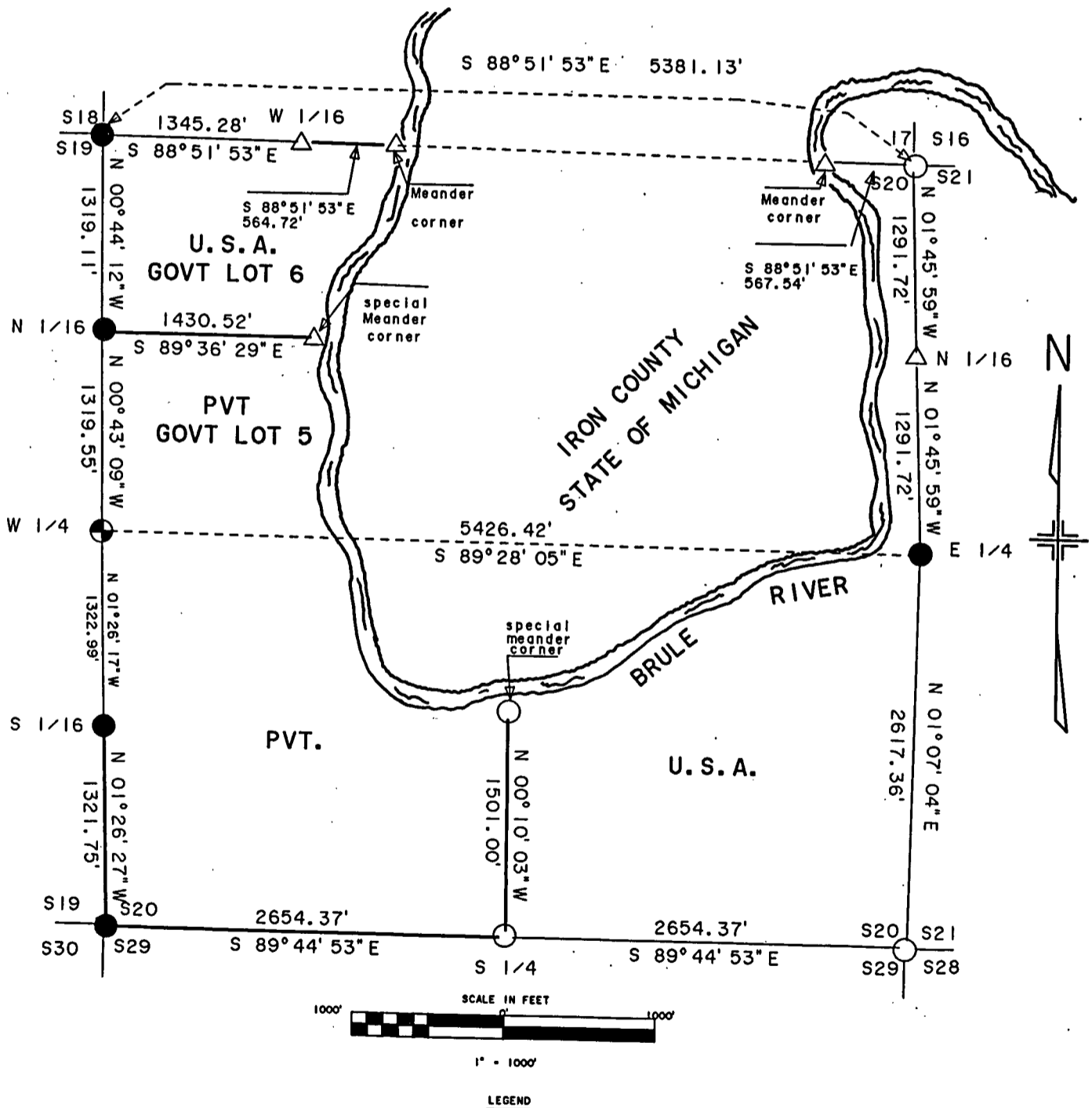
Stock No. 26273

FOREST CO SURVEYOR

FILE # 411420-19971215

DATE _____ BY _____

PLAT OF SURVEY FOR CERTIFIED LAND
 CORNER RESTORATION AND ESTABLISHMENT
 BEING THE CORNERS FOR GOVERNMENT LOT 6
 AND THE CORNERS ON THE PERIMETER OF THE SECTION
 SECTION 20, TOWNSHIP 41 NORTH, RANGE 14 EAST
 FOURTH PRINCIPAL MERIDIAN, FOREST COUNTY
 STATE OF WISCONSIN



- ⊕ 6" diameter concrete monument with brass cap buried in road
- 2 1/2 Inch Diameter Aluminum Pipe Monument 36 Inches Long
- △ 1 Inch Diameter Aluminum Pipe Monument 36 Inches Long
- 2 1/2 Inch Diameter Galvanized Iron Pipe Monument 60 Inches Long with a Brass Cap
- Boundary Line Marked To Standard



Stock No. 26273

page 2 of 5

SECTION 20 TOWNSHIP 41 NORTH RANGE 14 EAST

This survey was made by the U.S. Department of Agriculture Forest Service for the purpose of recovering, restoring, establishing, marking and perpetuating the corners and boundary lines of U.S. Government land on the perimeter and within Section 20 Township 41 North Range 14 East, Fourth Principal Meridian, Forest County State of Wisconsin as shown on the plat map herewith.

The U.S.. Government land within Section 17 was acquired in 1935.

The bearings between corner positions are true bearings determined by Global Positioning Satellite observations. The accuracy of this survey exceeds the State of Wisconsin requirement for closure of 1 part in 3,000. Corners recovered or established by this survey are marked as described in the map legend. Each monumented corner is referenced to blazed, scribed, painted and tagged bearing trees or reference objects. Tie bearings to the trees are magnetic and corrected for declination.

A request was made to the Bureau of Land Management to review this survey to assure that proper procedures were followed.

The field notes and a copy of the Plat of Survey are on file at the Forest Service Supervisor's office in Rhinelander, WI. And the District Rangers office in Florence, Wisconsin.

CORNERS RECOVERED AND RESTORED

1. Northwest Section Corner.

Corner position recovered and restored from original survey evidence in 1964 by Jean Resvick, U.S. Forest Service Land Surveyor. Recorded in Book 2 of Plats, Page 24 as Document No. 90018.

Corner references recovered:

Jack Pine	16"	S58°E	17.85 ft
Spruce	(dead)	S25°W	19.75 ft
Jack Pine	10"	N50°W	37.45 ft
W. Pine	(dead)	N10°W	42.70 ft
Wood sign post		Northwest	1.00 ft

New Corner references:

Jack Pine	11"	N35°E	25.23 ft
Spruce	7"	S24°W	21.28 ft

2. Northeast Section Corner.

Corner position restored by using proportionate methods and three way ties to the Brule River.

Corner references :

Maple	6"	S44°W	30.34 ft
Maple	7"	N39°W	13.38 ft
Steel sign post		Southwest and alongside.	

3. East Quarter Corner.

corner position recovered and restored by Jean Resvick in 1970 from acceptance of a old wood post that had been in place for over 40 years.

Corner references recovered:

Maple	7"	N48°E	16.65 ft
Y. Birch	18"	N87°E	29.41 ft
Cedar (down)	8"	S39°W	15.65 ft
Steel sign post		South	1.00 ft



Stock No. 26273

page 3 of 5

4. Southeast Section Corner.

Corner position recovered as restored in 1982 by double proportionate methods.

Corner references recovered:

Maple	8"	N36°E	32.00 ft
Balsam (down)	13"	S03°E	30.54 ft
Aspen (stub)	14"	S65°W	55.04 ft
Steel sign post		Northeast	1.00 ft

New Corner references:

Balsam	8"	S69°E	30.04 ft
--------	----	-------	----------

No references available Southwesterly.

5. South Quarter Corner.

Corner position recovered as restored in 1982 midpoint and on line between section corners

Corner references recovered:

Maple	7"	S84°E	7.34 ft
Maple	9"	S54°W	10.94 ft
Steel sign post		East	1.00 ft

6. Southwest Section Corner.

Corner position recovered as restored by Jean Resvick in 1963. from acceptance of scribed wood post and fence corner ties.

Corner references recovered:

Spruce	6"	N34°E	(down)	22.45 ft
W. Birch	7"	S74°E		19.90 ft
W. Pine	11"	S24°W		14.50 ft
J. Pine	6"	N75°W	(dead)	17.90 ft
Wood sign post		Southwest		1.00 ft

New Corner references:

W. Pine	7"	N43°W		30.75 ft
Spruce	2"	N03°E		23.78 ft

7. South Sixteenth Corner between Sections 19 and 20.

Corner position recovered as established by Jean Resvick in 1963.

Corner reference recovered:

Spruce	7"	N79°W		17.78 ft
W. Pine	12"	S37°W		29.63 ft
Woos sign post		Southwest		1.00 ft

8. West Quarter Corner.

Corner position recovered as restored by Jean Resvick in 1963

Corner references recovered:

Power Pole #NT-40-N63-1844		N35°W		36.91 ft
----------------------------	--	-------	--	----------

New Corner references:

Steel road sign post	2 1/2"	S58°E		34.01 ft
----------------------	--------	-------	--	----------

(Puckett & McIntosh)

9. North Sixteenth Corner between Sections 19 and 20.

Corner position recovered as established by Jean Resvick in 1963

Corner references recovered:

Red Pine	15"	N52°E		16.30 ft
Red Pine	18"	N77°W		53.00 ft
wood sign post		West		1.00 ft

10. Special Meander Corner on North South Center Line in South half of section.

Corner position recovered as established in 1982.

Corner reference recovered:

Maple	9"	S82°E		22/25 ft
W. Birch	12"	S09°E		16.05 ft
Steel sign post		Southeast		0.50 ft



Stock No. 26273

page 4 of 5

11. Meander Corner between sections 17 and 20 in the Northeast side of section 20

Corner position restored at the high water mark and on line between the Northeast and Northwest Section Corners in the northeast of the section.

Corner references:

R. Maple	5"	N70°E	62.44 ft
Cedar	16"	N88°E	44.22 ft
Steel sign post		West	1.10 ft

12. Meander Corner between Sections 17 and 20 in the Northwest side of Section 20.

Corner position restored at the high water mark and on line between the Northeast and Northwest Section corners in the northwest of the section.

Corner references:

Balsam	10"	N31°E	8.70 ft
Maple	5"	N11°W	18.55 ft
Steel sign post		East	0.72 ft
Brule River		East	31.00 ft

CORNERS ESTABLISHED

1. North Sixteenth Corner between Sections 20 and 21.

Corner position established at midpoint and on line between the Northeast and East Quarter Corner positions.

Corner references:

Balsam	9"	N20°E	35.62 ft
Spruce	9"	N79°E	18.50 ft
Steel sign post		West	1.00 ft

2. West sixteenth Corner between Sections 17 and 20.

Corner position established at proportionate distance and on line between the Northeast and Northwest Section Corners.

Corner references:

Spruce	7"	N86°E	25.65 ft
Maple	6"	N15°W	9.64 ft
Steel sign post		South	1.00 ft

3. Special Meander Corner in the Northwest Quarter of the Section.

Corner position established per instructions from BLM.

Corner references:

Spruce	10"	North	14.80 ft
Cedar	7"	N29°E	44.44 ft
Steel sign post		East	1.39 ft
Brule River		East	23.00 ft



Stock No. 26273

SURVEYOR'S AFFIDAVIT

State of Wisconsin)

County of Forest)

I William B. Cochrane, Land Surveyor, U.S. Forest Service and a registered Land Surveyor in the State of Wisconsin, hereby certify that I have surveyed and subdivided Section 20, Township 41 North, Range 14 East, Fourth Principal Meridian, State of Wisconsin. I have surveyed and subdivided said section in accordance with the rules for the survey of the public lands and statutes of the State of Wisconsin.

The plat map and survey notes herewith are a correct representation of the land surveyed and divided

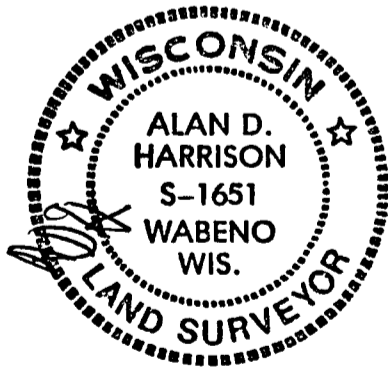
William B. Cochrane
Land Surveyor, U.S.D.A. Forest Service
R.L.S. State of Wisconsin
Certificate S-1107

Date of Survey: 1996

Survey requested by *[Signature]* District Ranger 12/15/97 Date

NOTICE

William B. Cochrane passed away prior to filing of this survey plat. I Alan Harrison a registered Land Surveyor, U. S. Forest Service and a registered Land Surveyor in the State of Wisconsin have reviewed the field work, office computations and correspondence pertaining to this survey and am signing in his behalf.



[Signature]
Alan Harrison
Land Surveyor, U.S. Forest Service
R.L.S. State of Wisconsin
Certificate # S-1651

