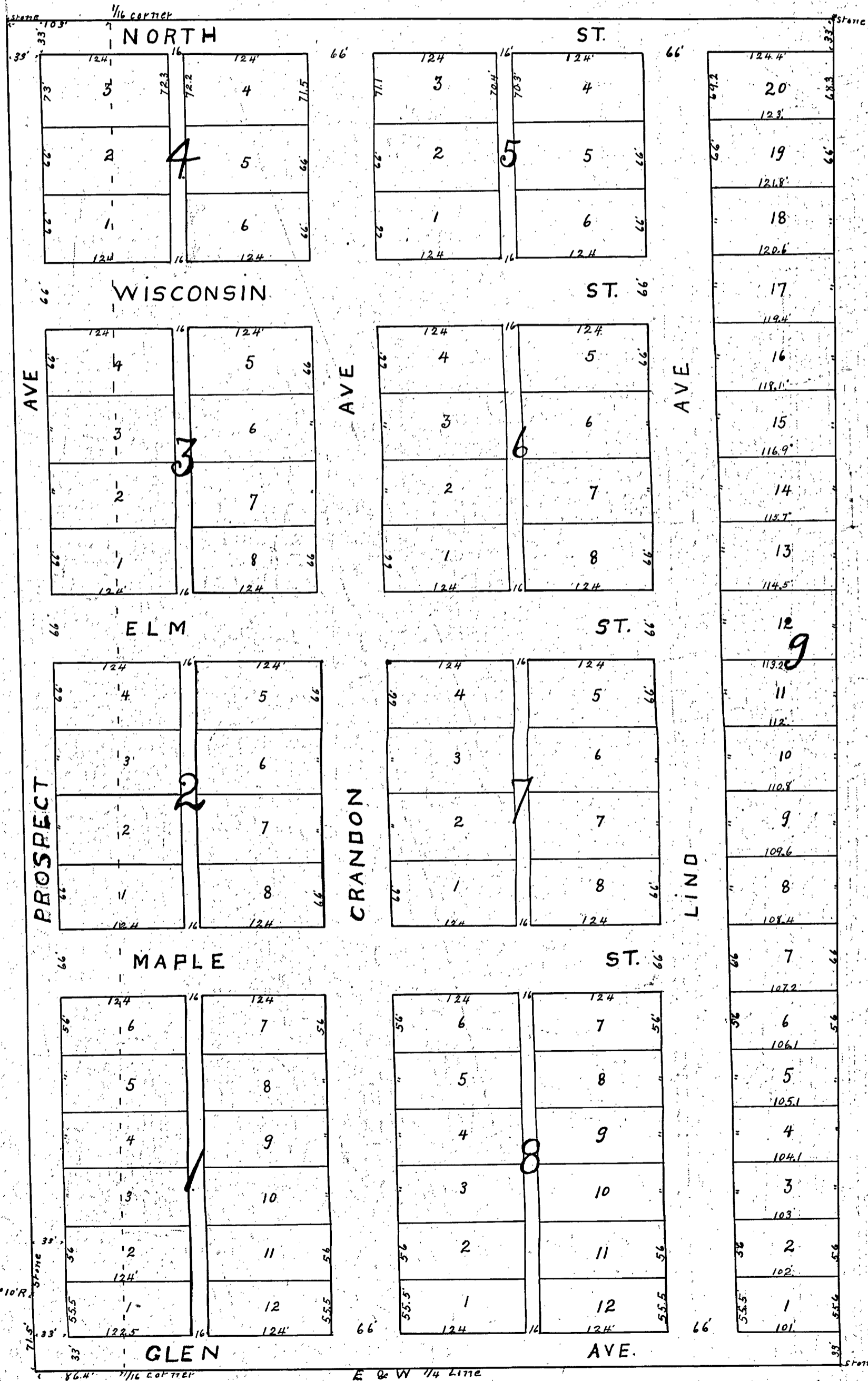


FAIRVIEW ADDITION TO CRANDON

Scale
100 Ft = 1" = 1/2"



STATE OF WISCONSIN }
FOREST COUNTY } ss.

I, Barney M. Ginley, do hereby certify that I have surveyed and plotted a part of the south one-half of the North West quarter of section twenty nine (29) town Thirty six (36) North of Range Thirteen (13) East of the Fourth (4th) Principal Meridian and situated in Forest County, State of Wisconsin, as shown on the within Map and to be known as Fairview Addition to Crandon that said survey was made by order and directions of Egbert Wyman, Trustee of the Land, so surveyed and plotted, That the Map hereon drawn is a correct representation of the exterior boundaries of the Land so surveyed and of the divisions thereof made and in surveying, subdividing and plotting the same I have fully complied with the requirements of Chapter one hundred one (101) of the Revised Statutes of the state of Wisconsin for 1898

Dated July 20th AD 1903

Barney M. Ginley
Surveyor

STATE OF WISCONSIN }
FOREST COUNTY } ss.

I, Egbert Wyman do hereby certify that I caused the Lands described in the foregoing certificate of Barney M. Ginley Surveyor, to be surveyed and mapped as represented on the within map.

Dated July 31st AD 1903

In presence of

M. Dickinson }
J. A. Walsh }

Egbert Wyman

STATE OF WISCONSIN }
FOREST COUNTY } ss.

On the 12th day of Aug. 1903 before me a Notary Public in and for said County and State personally appeared Egbert Wyman to me known to be the person, who as such trustee, executed the foregoing instrument, and acknowledged the same witness my hand and Notary Seal the day and year of aforesaid

J. A. Walsh
Notary Public

#9390

August 12 1903
17
M. Dickinson

My commission
expires Jan 21, 1906.

no. 23670

Registers Office }
Forest County, Wis. } ss. Re-recorded this
16th day of February, A. D. 1911, at 3:15
o'clock P. M. and recorded in Vol 1 of
Plats, on page 27

Andrew Oettinger
Register of Deeds

I hereby certify that the within map is a correct plat made from actual survey of the lands comprising all that part of the South West quarter of the South West quarter of Section Number Thirty (30), Township Number Thirty six (36) North, of Range Number Fifteen (15) East of the 4th Principal meridian, in the County of Forest and State of Wisconsin, described as follows:—commencing at a point in the Section line between Sections thirty & thirty one (30 + 31) of the said town 560 feet east of the South West of the said Section 30, thence running East on the section line 808 feet to the eighth corner, thence North on the 8th line between the South West quarter of the South West quarter and the South East quarter of the South West quarter of said Sec. 30, 890 $\frac{5}{10}$ feet, thence West parallel with the said Section line 155 feet, thence South parallel with the said 8th line 186 feet, thence West parallel with the section line 288 feet, thence North parallel with the said 8th line 93 feet, thence West parallel with the said section line 216 feet, thence North parallel with the said 8th line 511 $\frac{5}{10}$ feet, thence West parallel with the said section line 182 feet, thence South parallel with the right of Way of the Chicago and North Western Railway company 321 feet to the place of Beginning. The land so platted and mapped out is divided into 7 Blocks numbered A, B, C, D, E, F, and G. Block "A" has 9 lots, Lots 1-2 and 3 have each a frontage of 44 feet and a length of 150 feet; lot 4-5 and 6 have each a frontage of 48 feet; Lots 7-8 and 9 have each a frontage of 50 feet, lot 4 is long on the South line 132 $\frac{7}{10}$ feet and on the North line 134 $\frac{4}{10}$ feet, lot 5 is long on the South line 134 $\frac{7}{10}$ feet and on the North line 135 $\frac{7}{10}$ feet, lot 6 is long on the South line 135 $\frac{7}{10}$ feet and on the North line 136 $\frac{7}{10}$ feet, lot 7 is long on the South side 137 $\frac{2}{10}$ feet and on the North line 139 $\frac{5}{10}$ feet, lot 8 is long on the South line 139 $\frac{5}{10}$ feet and on the North line 140 $\frac{8}{10}$ feet, lot 9 is long on the South line 140 $\frac{8}{10}$ feet and on the North line 142 $\frac{1}{10}$ feet. Block "B" has 20 lots, Lots 1-2-3-4-5-6-7 and 8 have each a frontage of 44 feet, and are long each 150 feet, lots 9, 10, 11, 18-19 and 20 have each a frontage of 48 feet and are long each 166 feet, lots 12-13-14-15-16 and 17 have each a frontage of 50 feet, and are long each 166 feet. Block "C" has 10 lots, lots 1-2-3 and 4 have each a frontage of 45 $\frac{5}{10}$ feet, and are long 150 feet, lots 5-6 and 7 have each a frontage of 48 feet and are long each 182 feet, lots 8-9 and 10 have each a frontage of 50 feet and are long each 182 feet. Block "D" has 7 lots, lots 1-6 and 3 have each a frontage of 46 $\frac{5}{10}$ feet, and are long each 182 feet, Lots 4-5-6 and 7 have each a frontage of 46 $\frac{5}{10}$ feet and are long each 190 feet. Block "E" has 8 lots, numbered 1-2-3-10-11-12-13 and 14, each of which have a frontage 46 $\frac{5}{10}$ feet and are long each 166 feet. Block "F" has 7 lots each of them have a frontage of 46 $\frac{5}{10}$ feet, lot 1 is long on the South line 143 feet, and on the North line 144 $\frac{7}{10}$ feet, lot 2 is long on the South line 143 $\frac{7}{10}$ feet and on the North line 146 $\frac{7}{10}$ feet, lot 3 is long on the South line 146 $\frac{7}{10}$ feet, and on the North line 148 $\frac{9}{10}$ feet, lot 4 is long on the South line 148 $\frac{9}{10}$ feet and on the North line 150 $\frac{7}{10}$ feet, lot 5 is long on the South line 150 $\frac{7}{10}$ feet and on North line 151 $\frac{7}{10}$ feet, lot 6 is long on the South line 151 $\frac{7}{10}$ feet and on the North line 152 $\frac{7}{10}$ feet, lot 7 is long on the South line 152 $\frac{7}{10}$ feet and on the North line 153 $\frac{5}{10}$ feet. Block "G" has 7 lots, each of which has a frontage of 47 $\frac{2}{10}$ feet, lot 1 is long on the South line 154 $\frac{7}{10}$ feet, and on the North line 156 $\frac{7}{10}$ feet, lot 2 is long on the South line 156 $\frac{7}{10}$ feet and on the North line 157 $\frac{5}{10}$ feet, lot 3 is long on the South line 157 $\frac{5}{10}$ feet, and on the North line 158 $\frac{7}{10}$ feet, lot 4 is long on the South line 158 $\frac{7}{10}$ feet and on the North line 160 $\frac{7}{10}$ feet, lot 5 is long on the South line 160 $\frac{7}{10}$ feet, and on the North line 161 $\frac{7}{10}$ feet, lot 6 is long on the South line 161 $\frac{7}{10}$ feet, and on the North line 162 $\frac{7}{10}$ feet, lot 7 is long on the South line 162 $\frac{7}{10}$ feet and on the North line 164 feet.

Maple Street and Elm Street are each 50 feet wide; First Street and second streets are each 60 feet wide, Will Street and Third Street are each 33 feet wide, Birch Street is 25 feet wide, The Alley West of Block A, F and G is 18 feet wide, all the other alleys are each 30 feet wide. The monuments erected are as follows:— at the South West corner of of said Section 30 a monument is erected consisting of an iron gas pipe 2 inches in diameter, set 2 feet in the ground.— 560 feet East of said South West corner of said Section 30 on the section line, a monument is erected consisting of a cedar post 2 inches square driven into the ground.— at the 8th corner 1368 feet East of the South West corner of said section 30 a monument is erected consisting of a cedar post 2 inches square driven into the ground. At the North East corner of of the South West quarter of the South West quarter a monument is erected consisting of a cedar post 4 inches in diameter driven 6 feet into the ground.— At a point 940 feet west of the 8th corner last aforesaid a monument is erected consisting of a cedar post 2 inches in diameter driven into the ground.— At the North West corner of the South west quarter of the South West quarter of said Section (30) thirty a monument is erected, consisting of a cedar post 4 inches in diameter driven into the ground.

I further certify that I have made the survey and map by the order of the Connor Lumber and Land Company, a duly organized corporation, organized under the laws of the State of Wisconsin and that the map, which is entitled a subdivision of South West quarter of the South West quarter of section 30, Town 36 North, of Range 15 East of the 4th principal meridian is a correct representation of all the boundaries of the land surveyed and that I have fully complied with all the provisions of chapter 101 of the Revised Statutes of Wisconsin and all the acts amendatory thereof in surveying, subdividing and mapping same.

Dated April 24th A.D. 1902.

William G. Harris

Surveyor