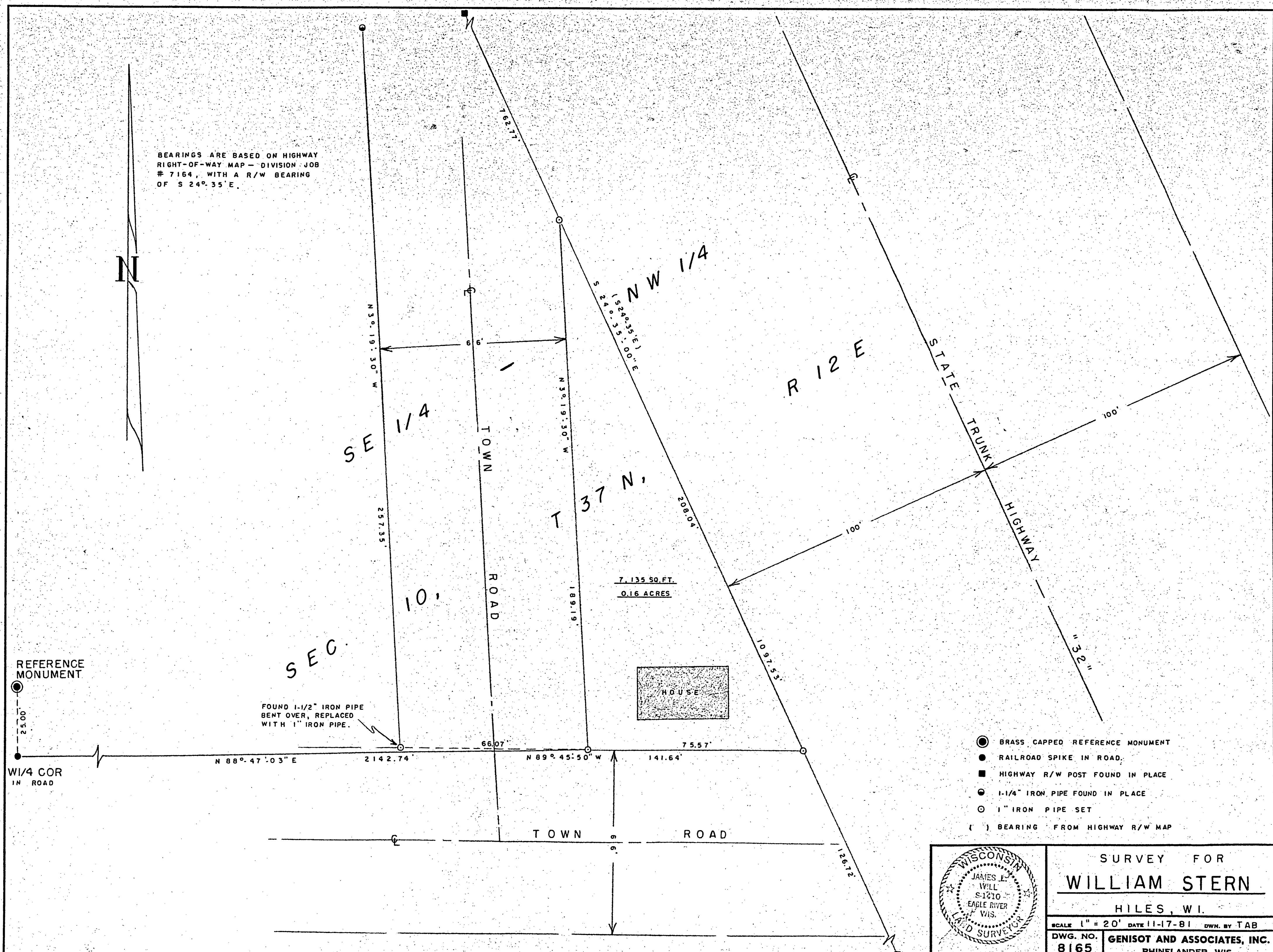


BEARINGS ARE BASED ON HIGHWAY
RIGHT-OF-WAY MAP - DIVISION JOB
7164, WITH A R/W BEARING
OF S 24° 35' E.

N



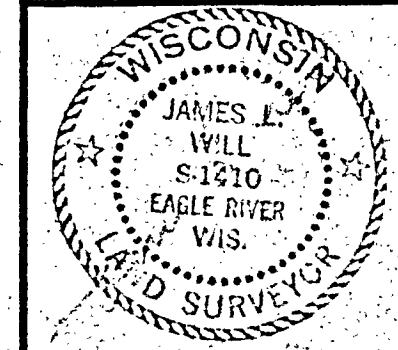
REFERENCE
MONUMENT

W1/4 COR
IN ROAD

N 88° 47' 03" E

N 89° 45' 50" W

- BRASS CAPPED REFERENCE MONUMENT
- RAILROAD SPIKE IN ROAD
- HIGHWAY R/W POST FOUND IN PLACE
- 1-1/4" IRON PIPE FOUND IN PLACE
- 1" IRON PIPE SET
- () BEARING FROM HIGHWAY R/W MAP



SURVEY FOR
WILLIAM STERN
HILES, WI.

SCALE 1" = 20' DATE 11-17-81 DWN. BY TAB

DWG. NO. 8165 GENISOT AND ASSOCIATES, INC.
RHINELANDER, WIS.