

INDEX OF SHEETS

SHEET NO. 1	TITLE
SHEET NO. 2	TYPICAL CROSS SECTIONS
SHEET NO. 2	ESTIMATE OF QUANTITIES
SHEET NO. 2A	MISCELLANEOUS QUANTITIES
SHEET NO. -	RIGHT OF WAY PLAT
SHEET NO. 3-6	PLAN AND PROFILE STA. 97+00 TO STA. 197+74.2
SHEET NO. 7-11	STANDARD DETAILS
SHEET NO. -	DRAINAGE STRUCTURES
SHEET NO. 12-25	CROSS SECTIONS

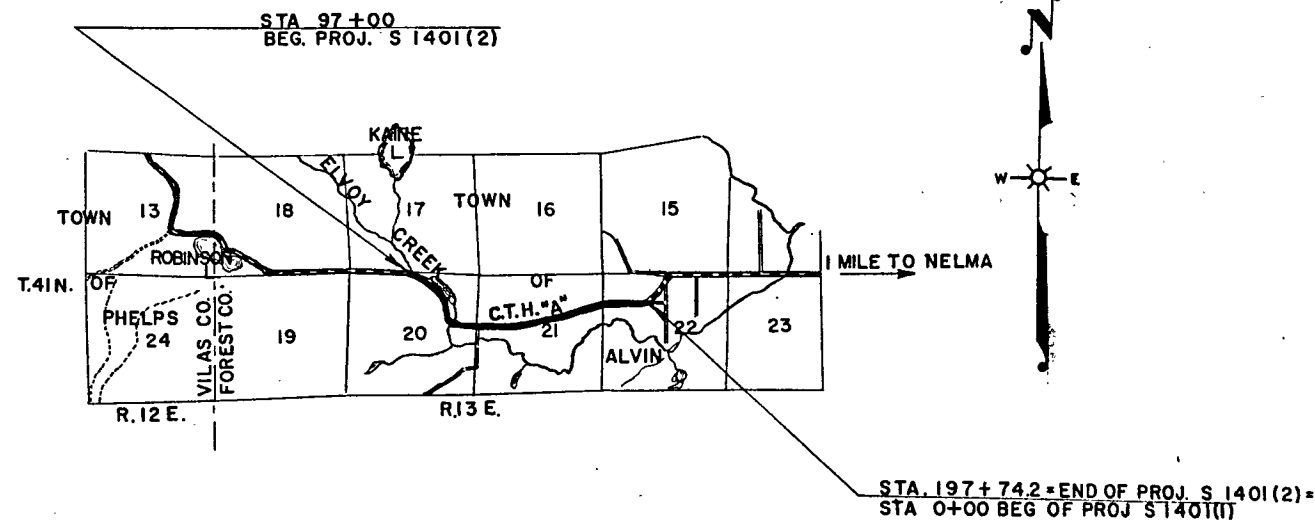
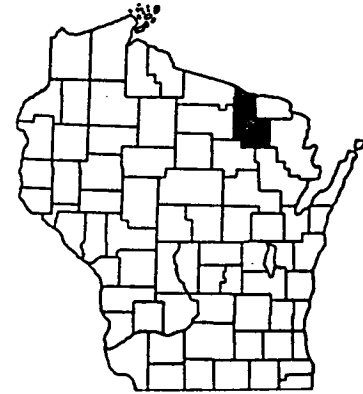
COUNTY AND HIGHWAY	ROUTE AND SECTION	CLASS AND AGREEMENT		FEDERAL DIVISION OFFICE	SHEET NUMBER	TOTAL SHEETS
		STATE	FEDERAL			
21.6	1401.0		11.2	WIS. 4	1	25

STATE OF WISCONSIN
STATE HIGHWAY COMMISSION OF WISCONSIN

PLAN AND PROFILE OF PROPOSED
PHELPS - NELMA ROAD
C.T.H. "A"
FOREST COUNTY
PROJECT S 1401(2)

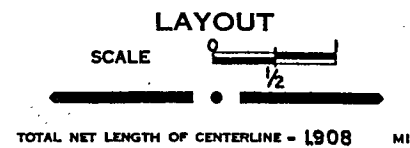
BEGINNING AT A POINT APPROXIMATELY 2480 FT. EAST AND 70 FT. SOUTH OF THE S.W. CORNER OF SEC 17, T41N, R13E, CONTINUING IN AN EASTERLY DIRECTION TO A POINT APPROXIMATELY 1290 FT. SOUTH AND 1610 FT. EAST OF THE S.W. CORNER OF SEC 15, T.41N., R13E.

SCALES { PLAN 1 IN. = 100 FT.
PROFILE HOR. 1 IN. = 100 FT. VERT. 1 IN. = 10 FT.
CROSS SECTIONS HOR. 1 IN. = 5 FT. VERT. 1 IN. = 5 FT.



CONVENTIONAL SIGNS

STATE LINE.....	CULVERTS IN PLACE.....
COUNTY LINE.....	CULVERTS REQUIRED.....
TOWNSHIP OR RANGE LINE.....	DROP INLET.....
SECTION LINE.....	POWER POLE.....
NEW RIGHT OF WAY LINE.....	TELEPHONE OR TELEGRAPH POLE.....
PRESENT RIGHT OF WAY LINE.....	RIGHT OF WAY MARKERS.....
WIRE FENCE { WOVEN.....	REFERENCE STAKE FOR HUBS ONLY.....
{ BARBED.....	MARSH.....
LOT LINE.....	HEDGE.....
CORPORATE OR CITY LIMITS.....	TREES.....
PROPERTY LINE.....	GROUND ELEVATION..... DATUM LINE 72.9
TRAVELED WAY OR P. E.....	GRADE ELEVATION..... DATUM LINE 75.8
RAILROADS.....	
BASE OR SURVEY LINE.....	



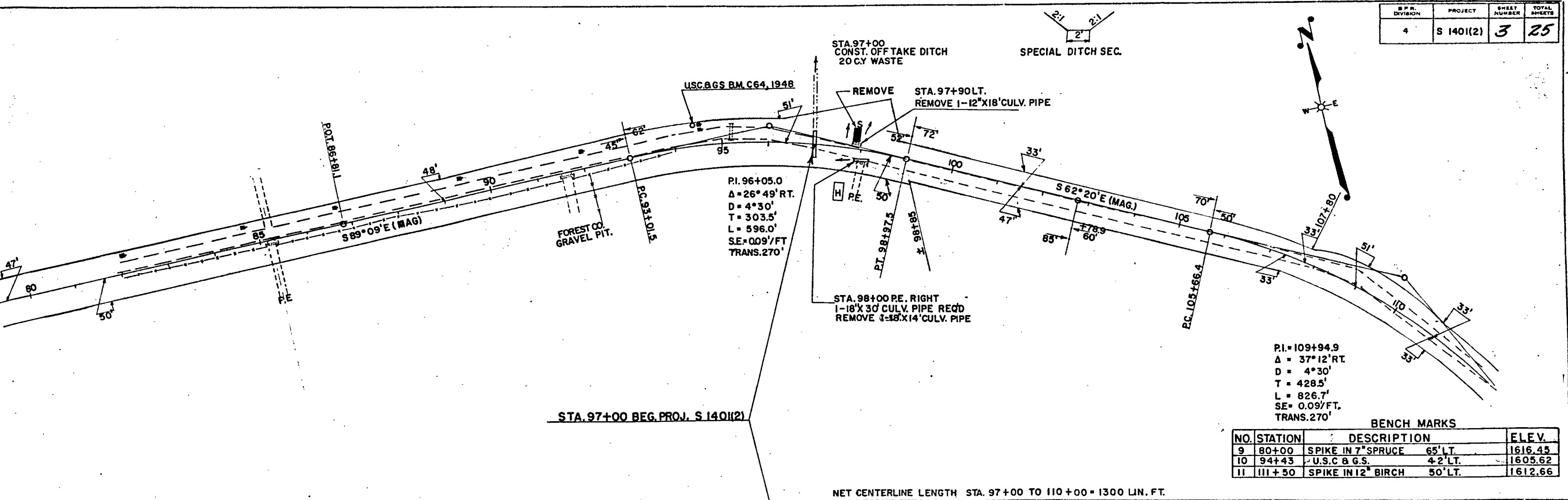
STATE HIGHWAY COMMISSION OF WISCONSIN
MADISON, WISCONSIN

SURVEYOR J.K. NOTE BOOK 8553-8565
DISTRICT COMPUTER SEY M. O. CHECKER
DISTRICT CHECKER M.B. CORRECT

CORRECT:
DATE Jan 16 1957 Henry Winat DISTRICT ENGINEER
RECOMMENDED FOR APPROVAL:
DATE 1/31/57 J.P.B. ENGINEER OF DESIGN
APPROVED:
DATE 1/31/57 E.C. Rostman STATE HIGHWAY ENGINEER
DEPARTMENT OF COMMERCE
BUREAU OF PUBLIC ROADS
APPROVED: _____ DATE _____
DISTRICT ENGINEER

S1401(2)

D.P. DIVISION	PROJECT	SHEET NUMBER	TOTAL SHEETS
4	S 140(2)	3	25

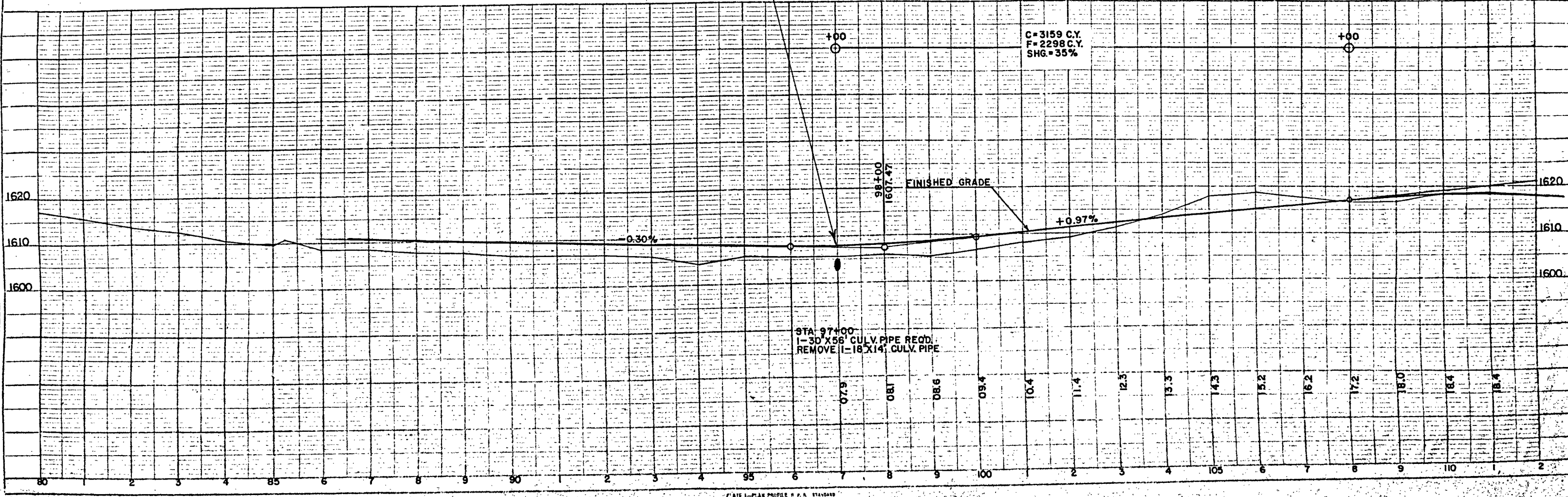


STA. 97+00 BEG. PROJ. S 140(2)

BENCH MARKS

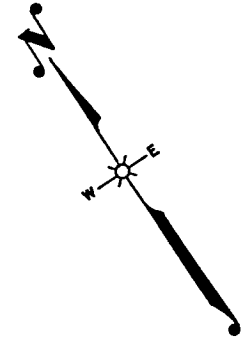
NO.	STATION	DESCRIPTION	ELEV.
9	80+00	SPIKE IN 7" SPRUCE 65' LT.	1616.45
10	94+43	U.S.C & G.S. 4' LT.	1605.62
11	111+50	SPIKE IN 12" BIRCH 50' LT.	1612.66

NET CENTERLINE LENGTH STA. 97+00 TO 110+00 = 1300 LIN. FT.

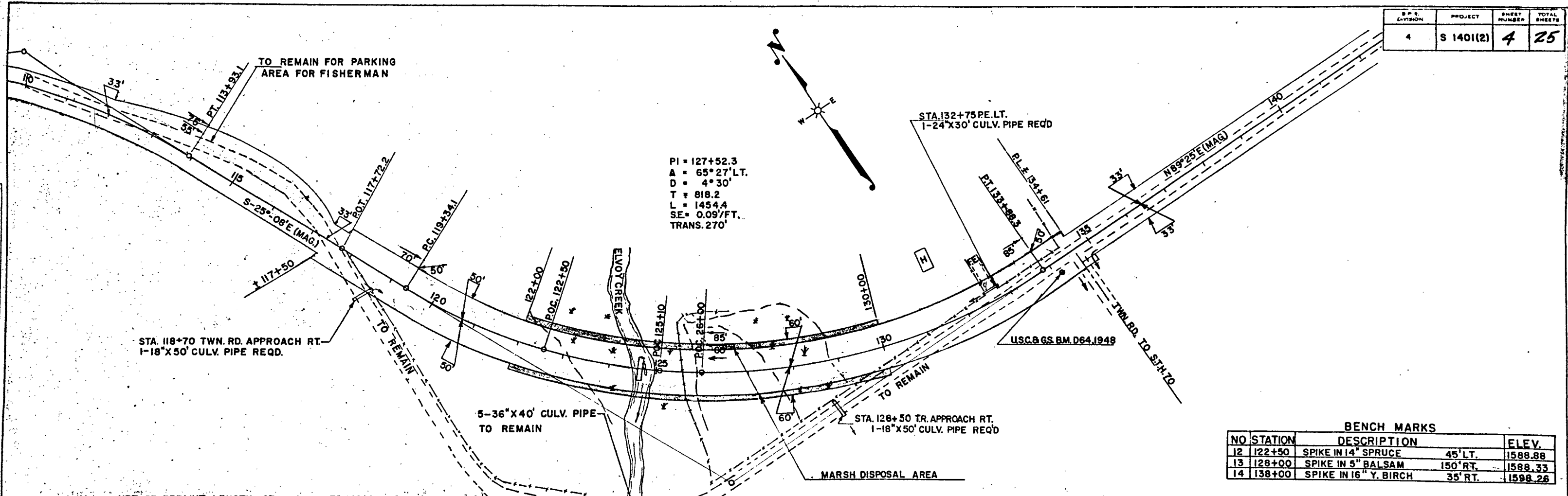


PLAN
 SURVEYED BY: J. J. Berry
 ALIGNED BY: J. J. Berry
 CHECKED BY: J. J. Berry
 DATE: 7/26/53
 SHEET NO. 3553

PROFILE
 SURVEYED BY: J. J. Berry
 GRADES CHECKED BY: J. J. Berry
 DATE: 7/26/53
 SHEET NO. 3556



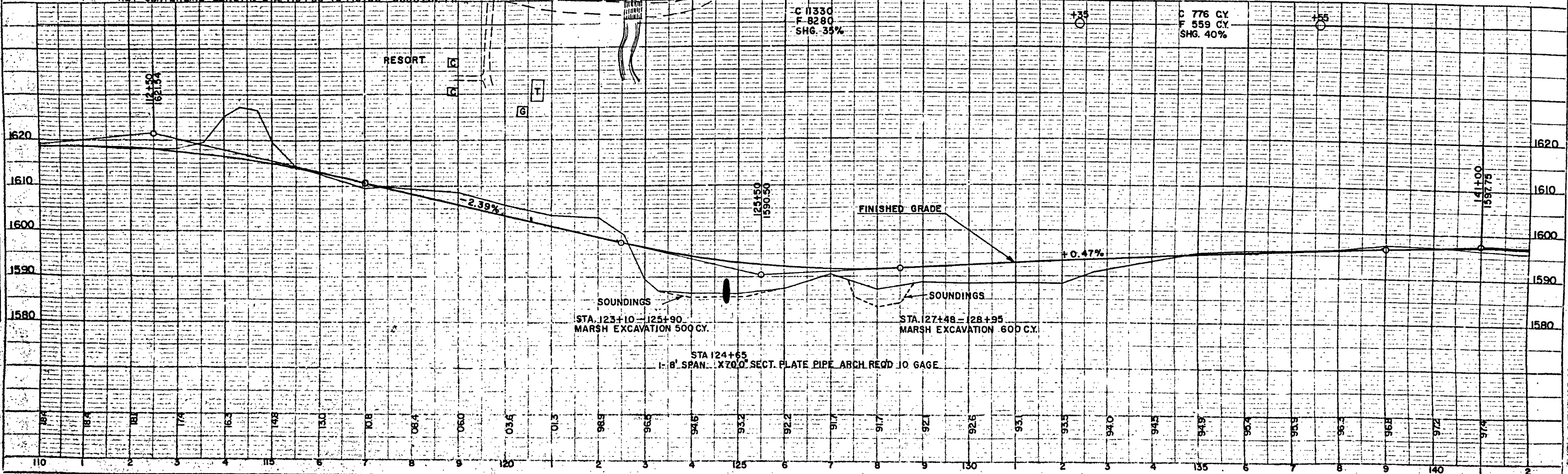
PI = 127+52.3
 A = 65°27'LT.
 D = 4°30'
 T = 818.2
 L = 1454.4
 SE = 0.09'/FT.
 TRANS. 270'



BENCH MARKS

NO	STATION	DESCRIPTION	ELEV.
12	122+50	SPIKE IN 14" SPRUCE 45' LT.	1588.88
13	128+00	SPIKE IN 5" BALSAM 150' RT.	1588.33
14	138+00	SPIKE IN 16" Y. BIRCH 35' RT.	1598.26

NET CENTERLINE LENGTH STA 110+00 TO 140+00 = 3000 LIN. FT.



PLAN

DATE	7-58
BY	EM
CHECKED	EM
SCALE	AS SHOWN
PROJECT	S 1401(2)
SHEET	4
TOTAL SHEETS	25

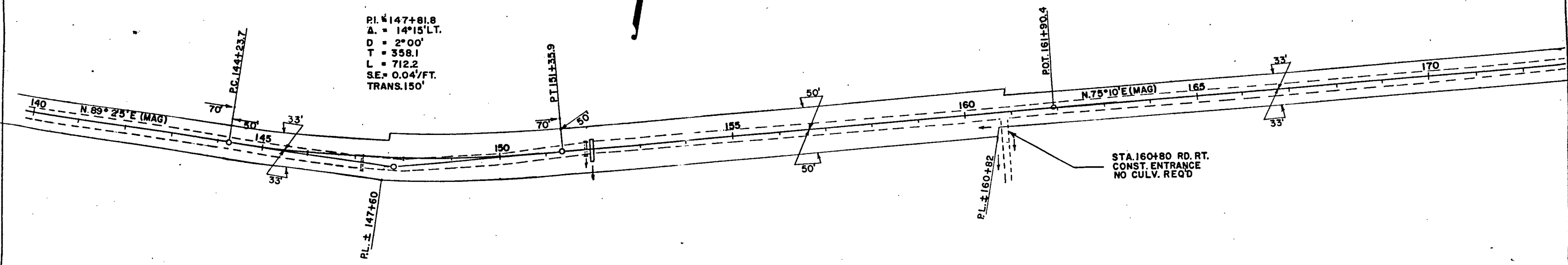
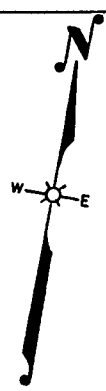
PROFILE

DATE	7-58
BY	EM
CHECKED	EM
SCALE	AS SHOWN
PROJECT	S 1401(2)
SHEET	4
TOTAL SHEETS	25

DATE: 7-16-57
 BY: J. J. Berg
 CHECKED: J. J. Berg
 NO. 2557

DATE: 7-16-57
 BY: J. J. Berg
 CHECKED: J. J. Berg
 NO. 2556

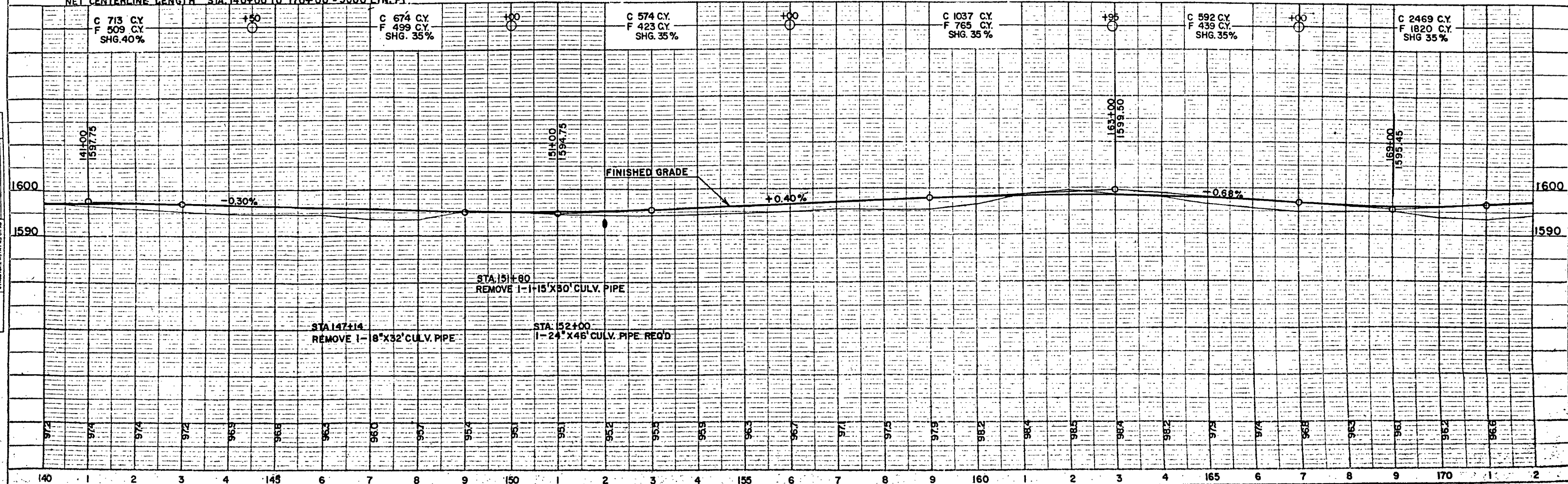
PI. 147+81.8
 Δ = 14°15' LT.
 D = 2°00'
 T = 358.1
 L = 712.2
 SE = 0.04'/FT.
 TRANS. 150'



BENCH MARKS

NO.	STATION	DESCRIPTION	ELEV.
15	150+12	SPIKE IN 6" POPLAR 33' RT.	1593.66
16	161+76	SPIKE IN 18" W. PINE 32' LT.	1602.93
17	170+75	SPIKE IN 9" POPLAR 47' LT.	1597.90

NET CENTERLINE LENGTH STA. 140+00 TO 170+00 = 3000 LIN. FT.



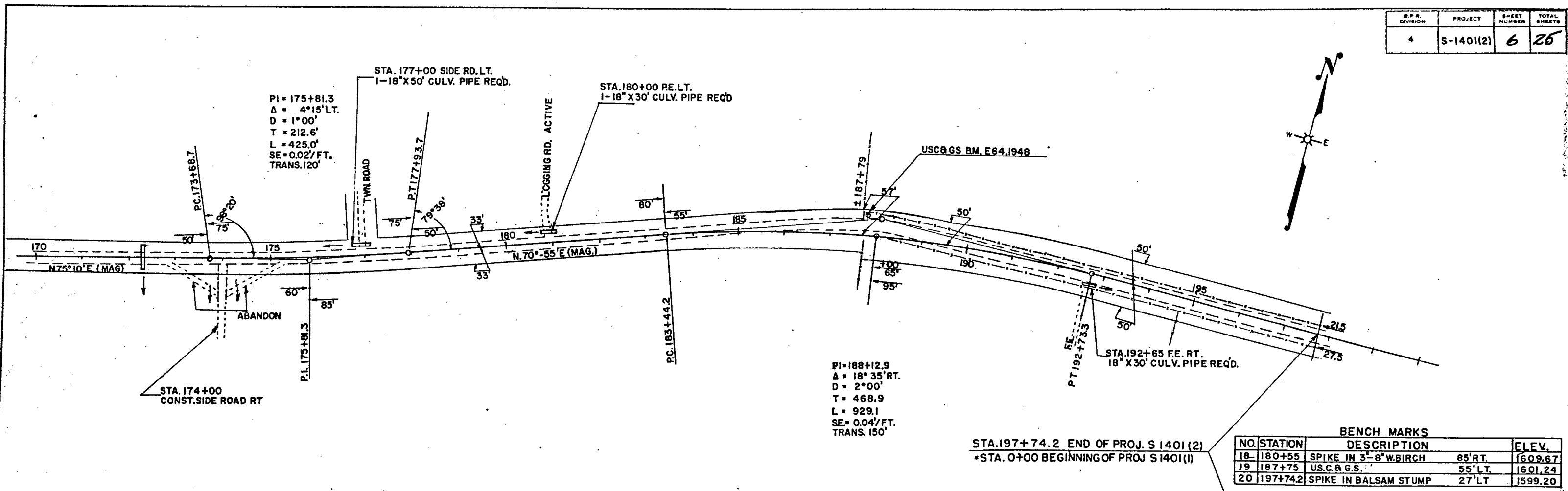
STA 151+60
 REMOVE 1-15' X 30' CULV. PIPE

STA 147+14
 REMOVE 1-8' X 32' CULV. PIPE

STA 152+00
 1-24' X 46' CULV. PIPE REQ'D

DATE	2/24/54
BY	J. L. G.
CHECKED	J. L. G.
SCALE	AS SHOWN
PROJECT	ST. 1401
NO.	6

DATE	2/24/54
BY	J. L. G.
CHECKED	J. L. G.
SCALE	AS SHOWN
PROJECT	ST. 1401
NO.	6



BENCH MARKS			
NO.	STATION	DESCRIPTION	ELEV.
18	180+55	SPIKE IN 3"-8" W. BIRCH	85' RT. 1609.67
19	187+75	U.S.C. & G.S.	55' LT. 1601.24
20	197+74.2	SPIKE IN BALSAM STUMP	27' LT. 1599.20

NET CENTERLINE LENGTH STA. 170+00 TO 197+74.2 = 2774.2 LIN. FT.

