

INDEX OF SHEETS

SHEET NO. 1	TITLE PAGE
2	TYPICAL CROSS-SECTION OF IMPROVEMENT & ESTIMATE
3	PLAN AND PROFILE STA. 1 TO STA. 62
4	60 122
5	120 182
6	180 212
7	210 237+50
8 TO 10	CONCRETE CULVERTS & GUARD FENCE
11 TO 24	CROSS SECTIONS.
	1- GRADE SHEET. (1)

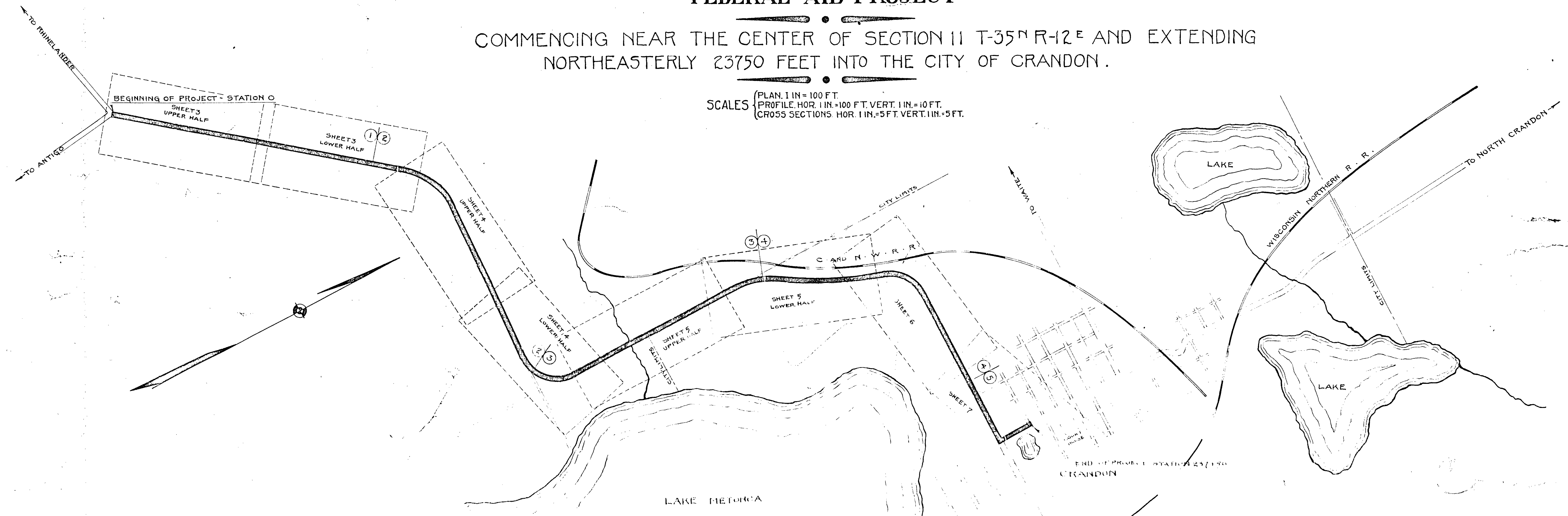
FED. ROAD DIST. NO.	STATE	FED. AID PROJ. NO.	FISCAL YEAR	SHEET NO.	TOTAL SHEETS
4	WISC.	73	1919	1	24

WISCONSIN PROJECT NO. 73
DIV. JOB NO. 7374

STATE OF WISCONSIN
WISCONSIN HIGHWAY COMMISSION
**PLAN AND PROFILE OF PROPOSED
PELICAN-CRANDON ROAD**
FOREST — COUNTY
FEDERAL AID PROJECT

COMMENCING NEAR THE CENTER OF SECTION 11 T-35^NR-12^E AND EXTENDING
NORTHEASTERLY 23750 FEET INTO THE CITY OF CRANDON.

SCALES (PLAN, 1 IN. = 100 FT.
PROFILE, HOR. 1 IN. = 100 FT. VERT. 1 IN. = 10 FT.
CROSS SECTIONS, HOR. 1 IN. = 5 FT. VERT. 1 IN. = 5 FT.)



CONVENTIONAL SIGNS

STATE AND NATIONAL LINE	CULVERTS	1
COUNTY LINE	DROP INLET	1/4
CITY, VILLAGE, OR TOWN	TROLLEY POLE	●
TOWNSHIP LINE	POWER POLE	●
SECTION LINE	TELEPHONE OR TELEGRAPH POLES	●
FENCE LINE	MAIL BOX	■
GUARD RAIL	REFERENCE STAKES	30
UNFENCED PROPERTY	MARSH	~
RIGHT OF WAY LINE	HEDGE	~
TRAVELED WAY	TREES	~
RAILROADS	GROUND ELEVATION	—
RETAINING WALL	GRADE ELEVATION	—
LEVEE		
SURVEY LINE		

LAYOUT
SCALE 1 IN. = 1 MI.
TOTAL FULL LENGTH OF CENTERLINE = 4.77 MI.

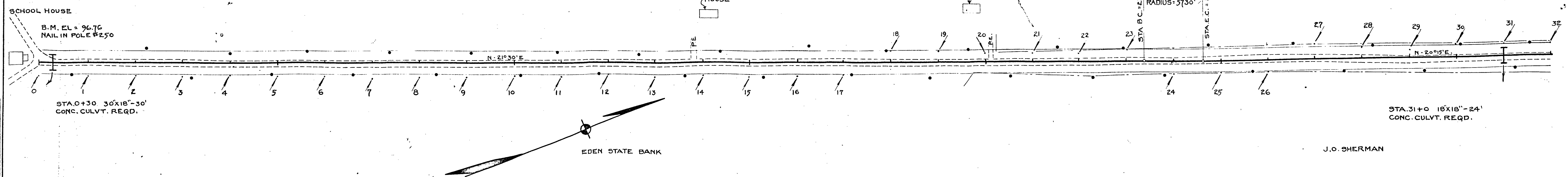
<p>WISCONSIN HIGHWAY COMMISSION MADISON, WIS.</p> <p>Surveyor: HUBBARD Note Book: 1963 Div. Engineer: Halsey P.L. Check: 1919 By: Charles HUBBARD, District Engineer</p> <p>RECOMMENDED FOR APPROVAL: [Signature] DIVISION ENGINEER</p> <p>APPROVED: DATE: 3.5.1919 [Signature] STATE HIGHWAY ENGINEER</p>	<p>U.S. DEPARTMENT OF AGRICULTURE BUREAU OF PUBLIC ROADS</p> <p>RECOMMENDED FOR APPROVAL: [Signature] CHIEF ENGINEER</p> <p>APPROVED: [Signature] DISTRICT ENGINEER</p> <p>DATE: []</p>
--	--

FED. ROAD DIST. NO.	STATE	FED. AID PROJ. NO.	FISCAL YEAR	SHEET NO.	TOTAL SHEETS
4	WIS.	73	1919	3	24

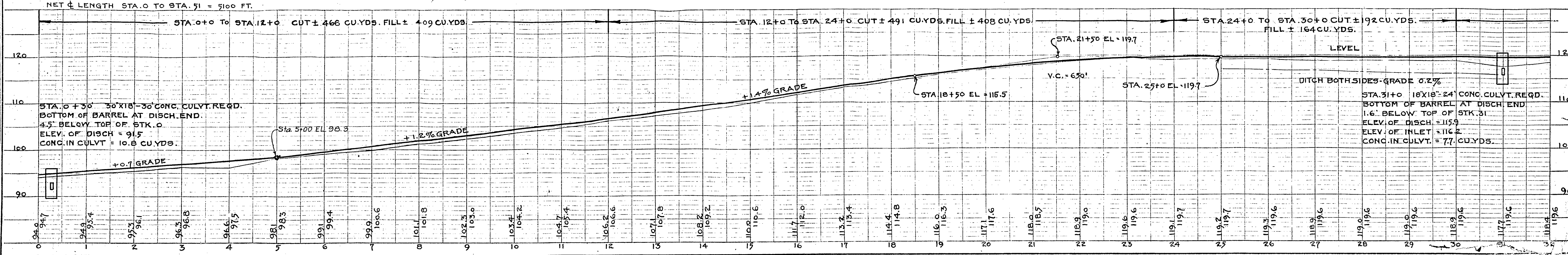
WISCONSIN PROJECT NO. 73
DIV. JOB. NO. 7374.

EDEN STATE BANK

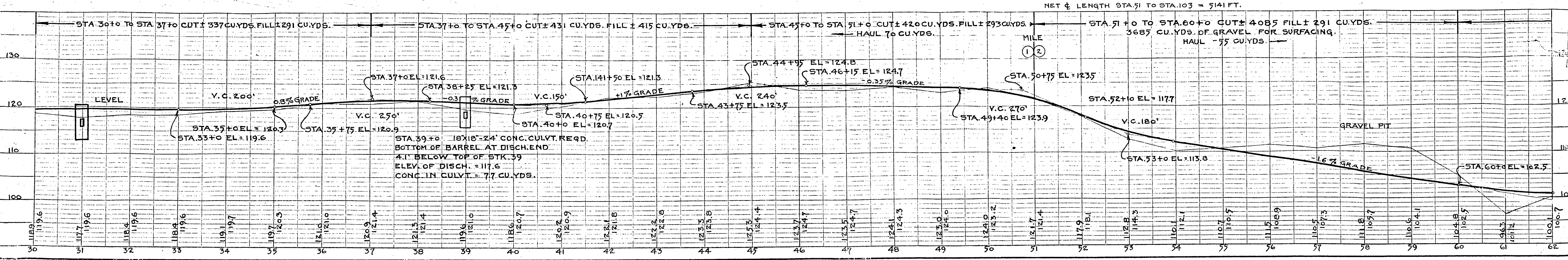
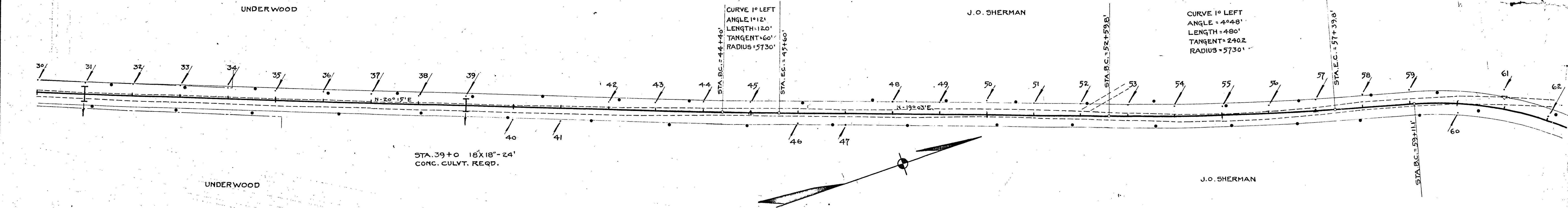
J.O. SHERMAN



DATE: 9/24/18
BY: H.H. HAY, H. JOHNSON, H. HAY
SURVEYED: 9/24/18
NOTE BOOK: ALIGNED CHECKED
NO. 1568

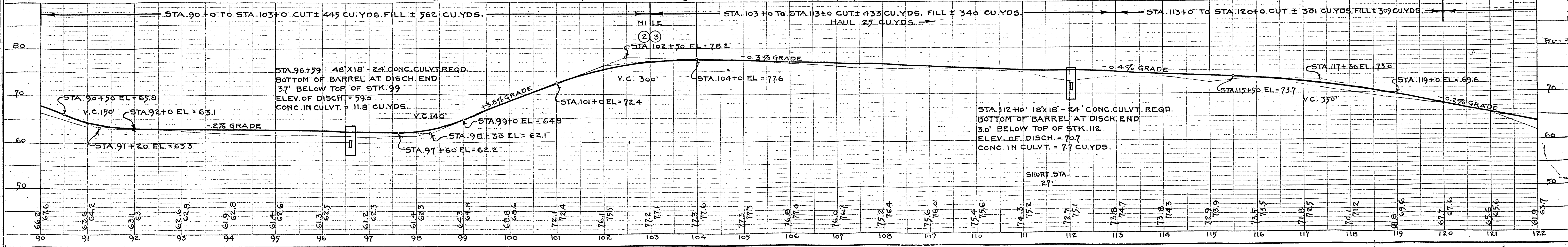
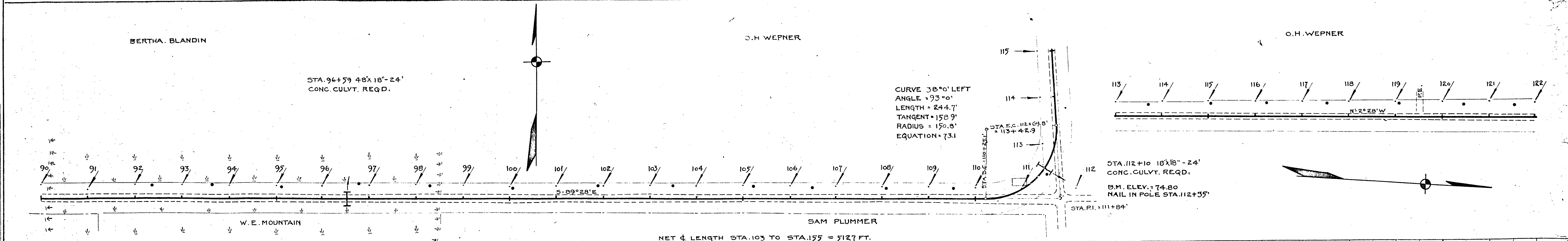
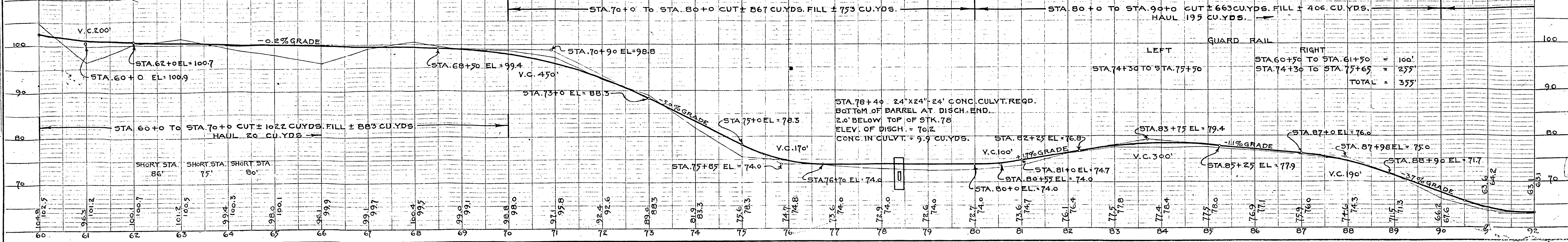
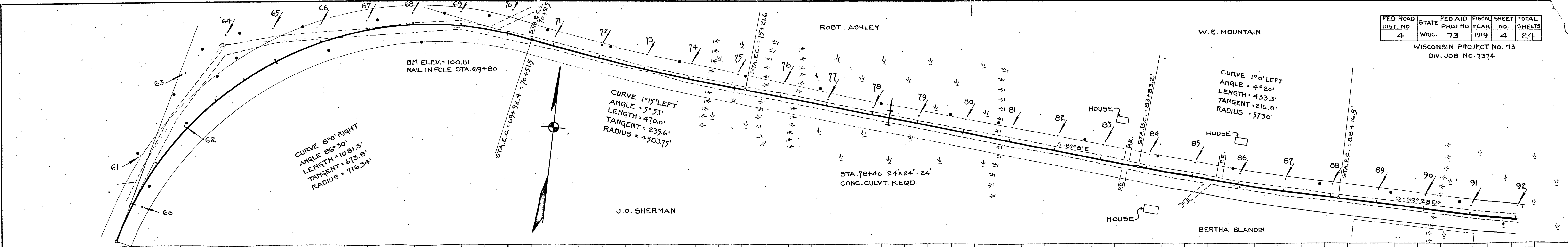


DATE: 9/24/18
BY: H.H. HAY, H. JOHNSON, H. HAY
SURVEYED: 9/24/18
NOTE BOOK: GRADES CHECKED
NO. 1568



FED. ROAD DIST. NO.	STATE	FED. AID PROJ. NO.	FISCAL YEAR	SHEET NO.	TOTAL SHEETS
4	WIS.	73	1919	4	24

WISCONSIN PROJECT No. 73
DIV. JOB No. 7374



PLAN SURVEYED, PLOTTED, CHECKED, DATE: BY: DATE: NO. OF WAYS CHECKED: RT. OF WAY CHECKED: NO. NOTE BOOK: NO. STRUCTURE NOTATION CH. NO.

PROFILE SURVEYED, PLOTTED, CHECKED, DATE: BY: DATE: NO. OF WAYS CHECKED: RT. OF WAY CHECKED: NO. NOTE BOOK: NO. STRUCTURE NOTATION CH. NO.

FED. ROAD DIST. NO.	STATE	FED. AID PROJ. NO.	FISCAL YEAR	SHEET NO.	TOTAL SHEETS
4	Wisc.	73	1919	5	24

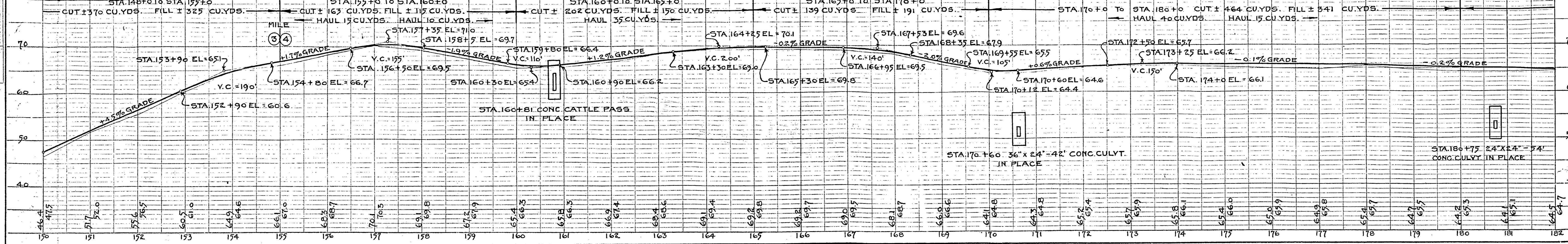
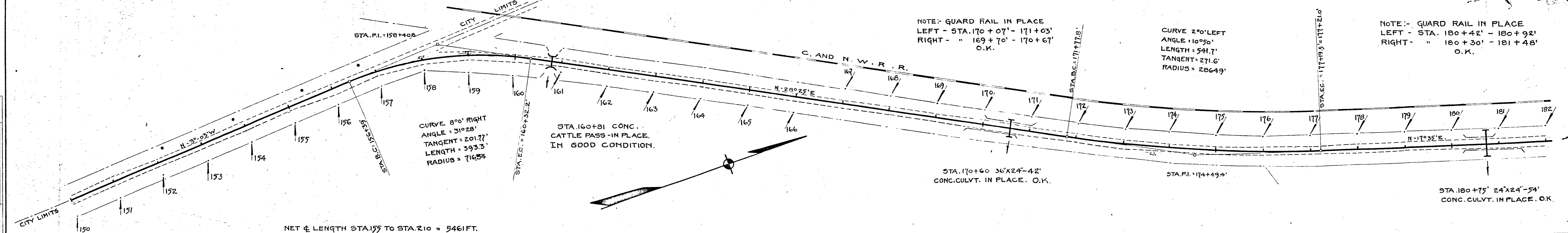
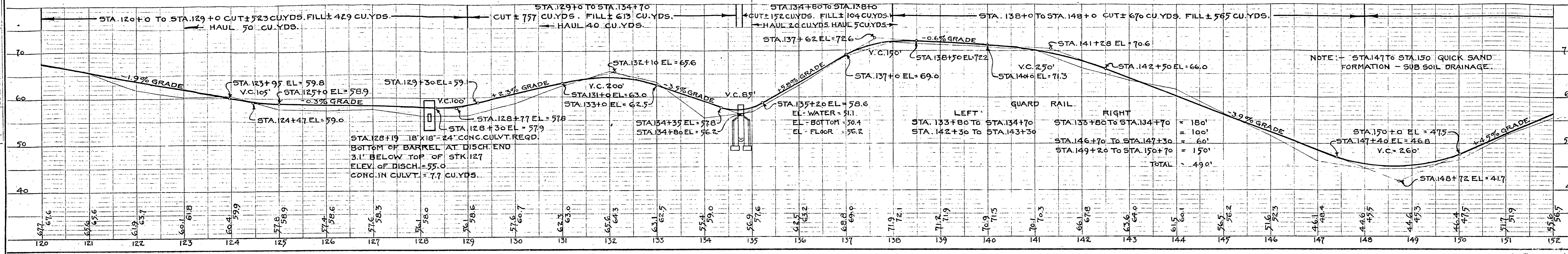
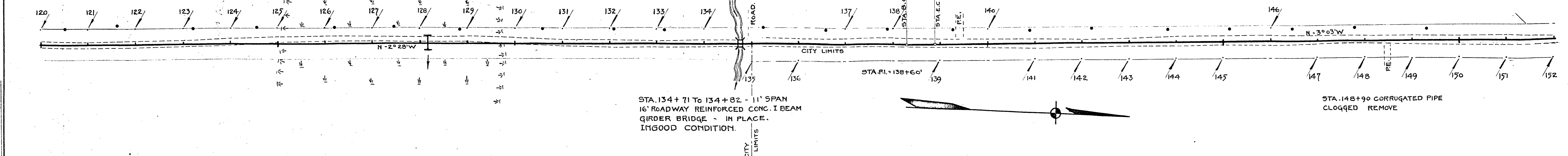
WISCONSIN PROJECT NO. 73
DIV. JOB NO. 7374.

O. H. WEPNER

STA. 128+19 18'x18'-24'
CONC. CULVT. REQD.

CURVE 1°0' LEFT
ANGLE = 0°35'
LENGTH = 58.3'
TANGENT = 29.2'
RADIUS = 5730'

B.M. ELEV. = 67.11
NAIL IN POLE STA. 132+10'



PLAN
SURVEYED
PLOTTED
NOTE BOOK
NO.

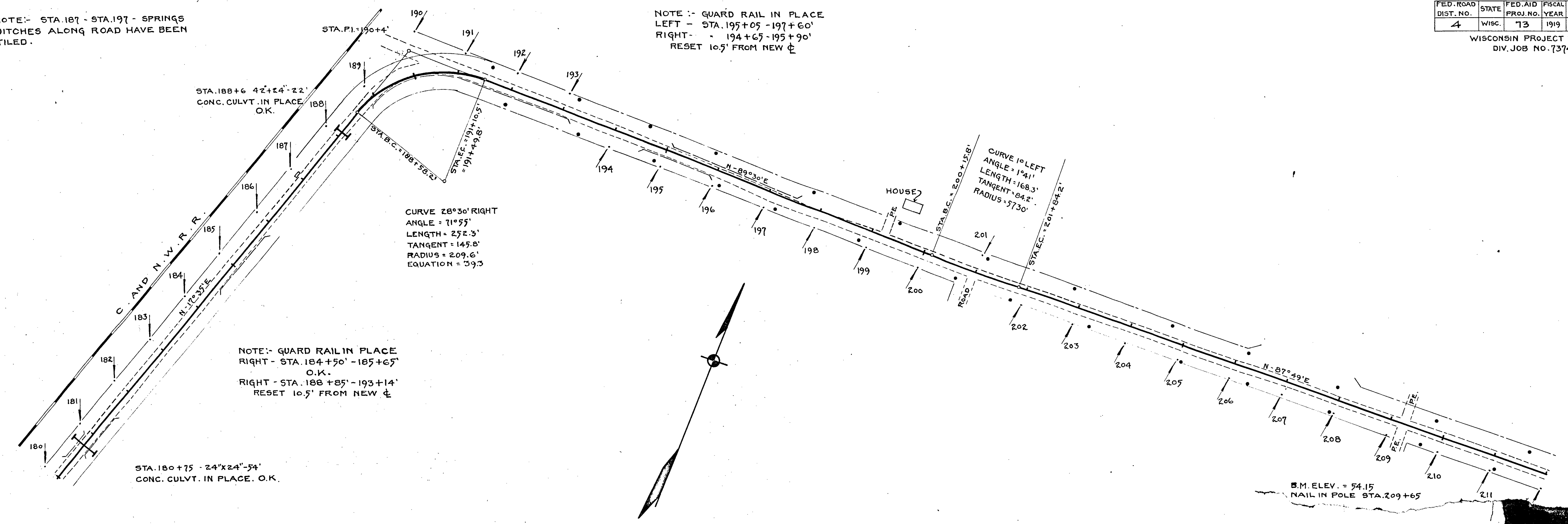
PROFILE
SURVEYED
PLOTTED
NOTE BOOK
NO.

FED. ROAD DIST. NO.	STATE	FED. AID PROJ. NO.	FISCAL YEAR	SHEET NO.	TOTAL SHEETS
4	WISC.	73	1919	6	24

WISCONSIN PROJECT NO. 73
DIV. JOB NO. 7374.

NOTE: STA. 187 - STA. 197 - SPRINGS
DITCHES ALONG ROAD HAVE BEEN
TILED.

NOTE: GUARD RAIL IN PLACE
LEFT - STA. 195+05 - 197+60'
RIGHT - 194+65 - 195+90'
RESET 10.5' FROM NEW ϕ



STA. 180+75 - 24'x24'-54'
CONC. CULVT. IN PLACE. O.K.

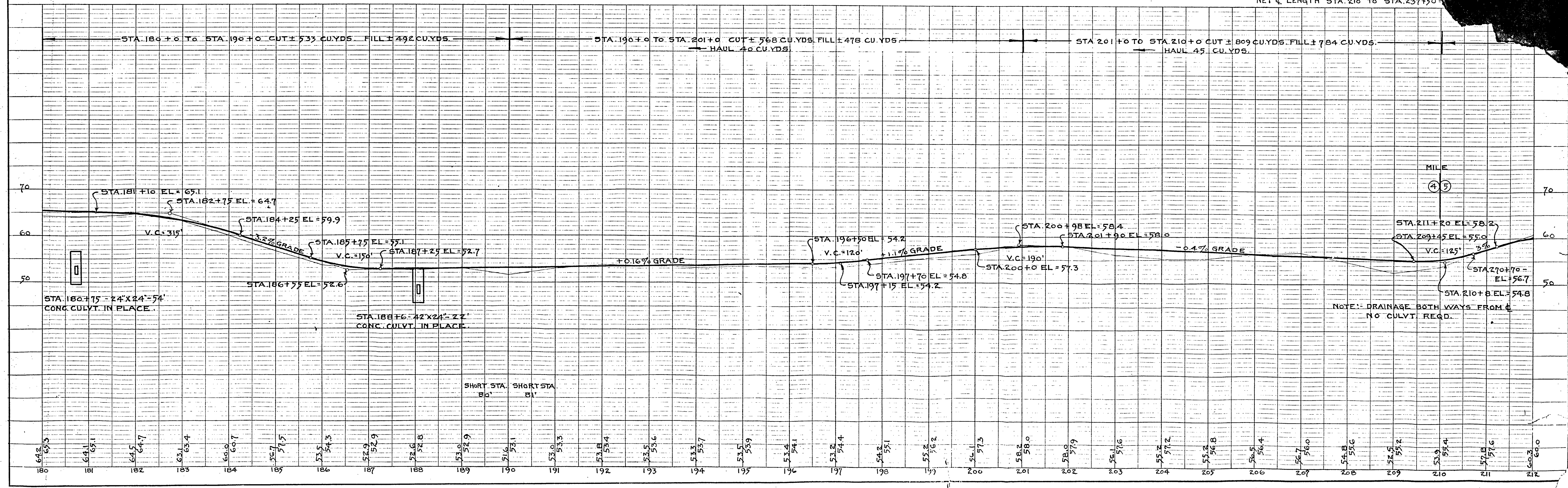
NOTE: GUARD RAIL IN PLACE
RIGHT - STA. 184+50' - 185+65'
O.K.
RIGHT - STA. 188+85' - 193+14'
RESET 10.5' FROM NEW ϕ

CURVE 28°30' RIGHT
ANGLE = 71°55'
LENGTH = 252.3'
TANGENT = 145.8'
RADIUS = 209.6'
EQUATION = 39.3

CURVE 10° LEFT
ANGLE = 1°41'
LENGTH = 168.3'
TANGENT = 64.2'
RADIUS = 7730'

B.M. ELEV. = 54.15
NAIL IN POLE STA. 209+65

NET ϕ LENGTH STA. 210 TO STA. 237+50

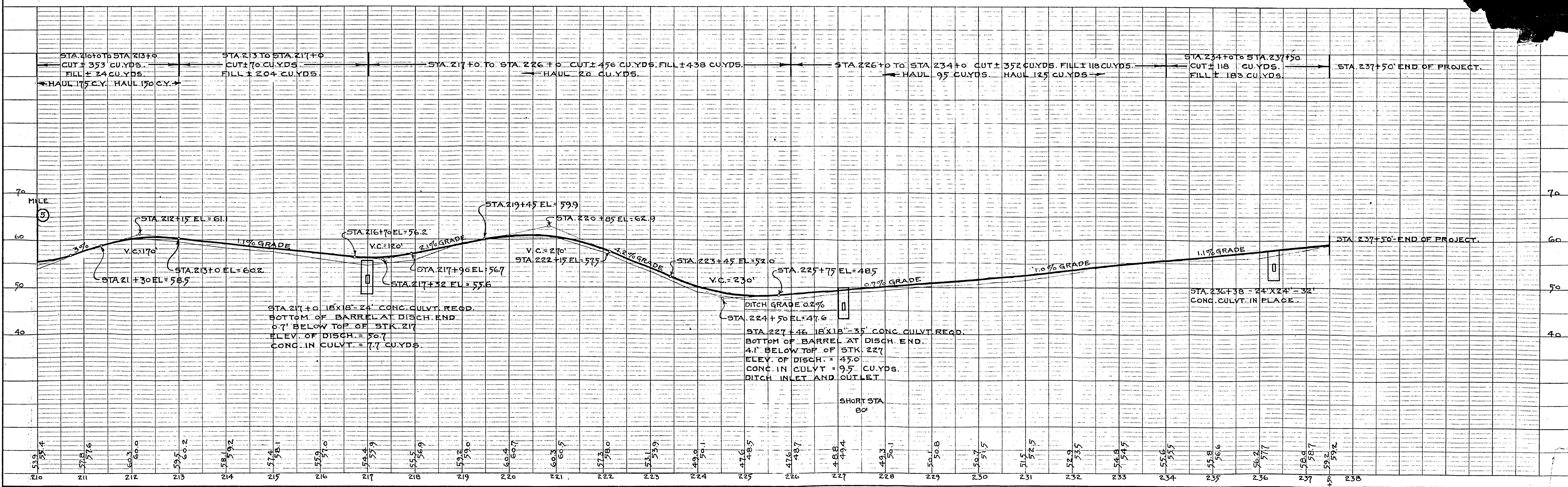
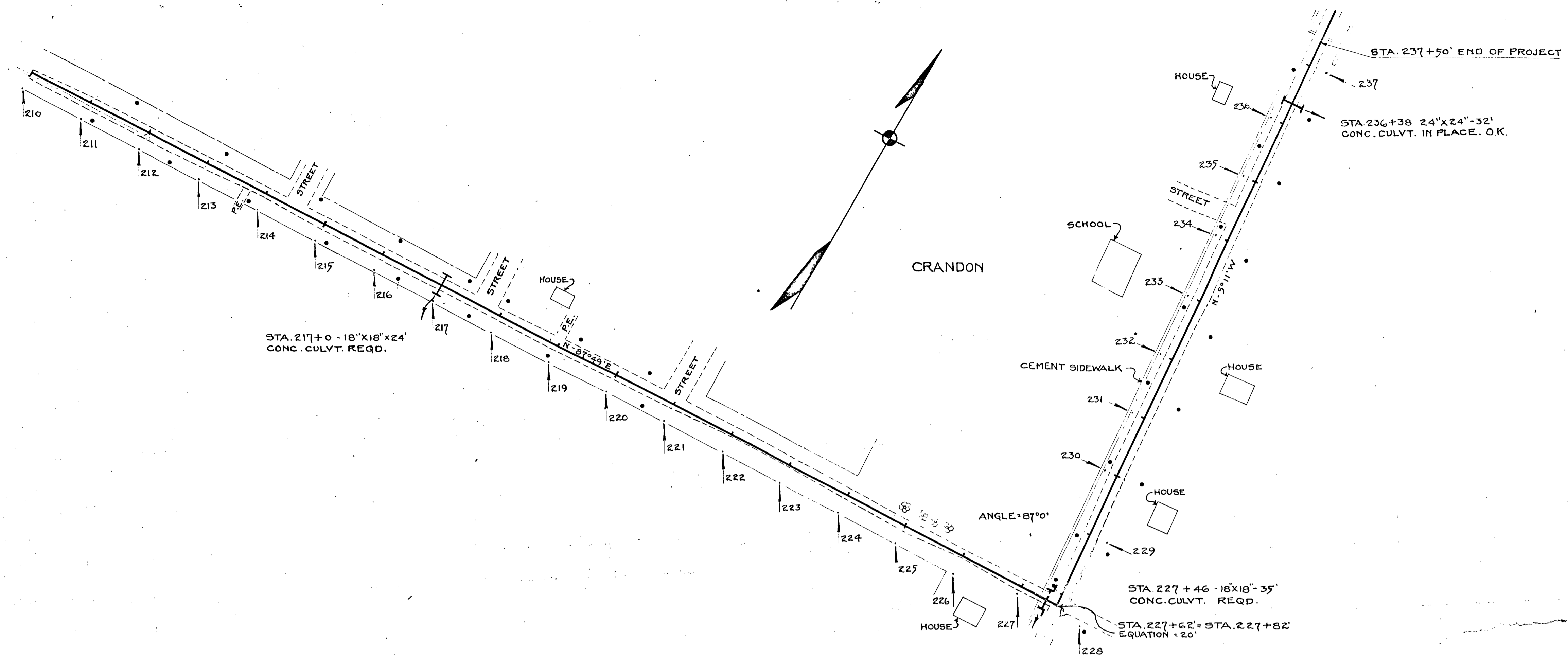


NOTE: DRAINAGE BOTH WAYS FROM ϕ
NO CULVT. REQD.

SHORT STA. SHORT STA.
80' 81'

FED. ROAD DIST. NO.	STATE	FED. AID PROJ. NO.	FISCAL YEAR	SHEET NO.	TOTAL SHEETS
4	Wisc.	73	1919	7	31

WISCONSIN PROJECT NO. 73
DIV. JOB NO. 7374.



STA. 210+16 TO STA. 213+0 CUT ± 353 CU. YDS. FILL ± 24 CU. YDS. HAUL 175 C.Y. HAUL 170 C.Y.

STA. 213 TO STA. 217+0 CUT ± 70 CU. YDS. FILL ± 204 CU. YDS.

STA. 217+0 TO STA. 226+0 CUT ± 456 CU. YDS. FILL ± 438 CU. YDS. HAUL 20 CU. YDS.

STA. 226+0 TO STA. 234+0 CUT ± 352 CU. YDS. FILL ± 118 CU. YDS. HAUL 95 CU. YDS. HAUL 125 CU. YDS.

STA. 234+0 TO STA. 237+50 CUT ± 118 CU. YDS. FILL ± 183 CU. YDS.

STA. 217+0 18'X18'-24' CONC. CULVT. REQD.
BOTTOM OF BARREL AT DISCH. END
0.7' BELOW TOP OF STK. 217
ELEV. OF DISCH. = 50.7
CONC. IN CULVT. = 7.7 CU. YDS.

STA. 227+46 18'X18'-35' CONC. CULVT. REQD.
BOTTOM OF BARREL AT DISCH. END
4.1' BELOW TOP OF STK. 227
ELEV. OF DISCH. = 45.0
CONC. IN CULVT. = 9.5 CU. YDS.
DITCH INLET AND OUTLET

STA. 236+38 - 24'X24'-32' CONC. CULVT. IN PLACE.