

Stock No. 26273

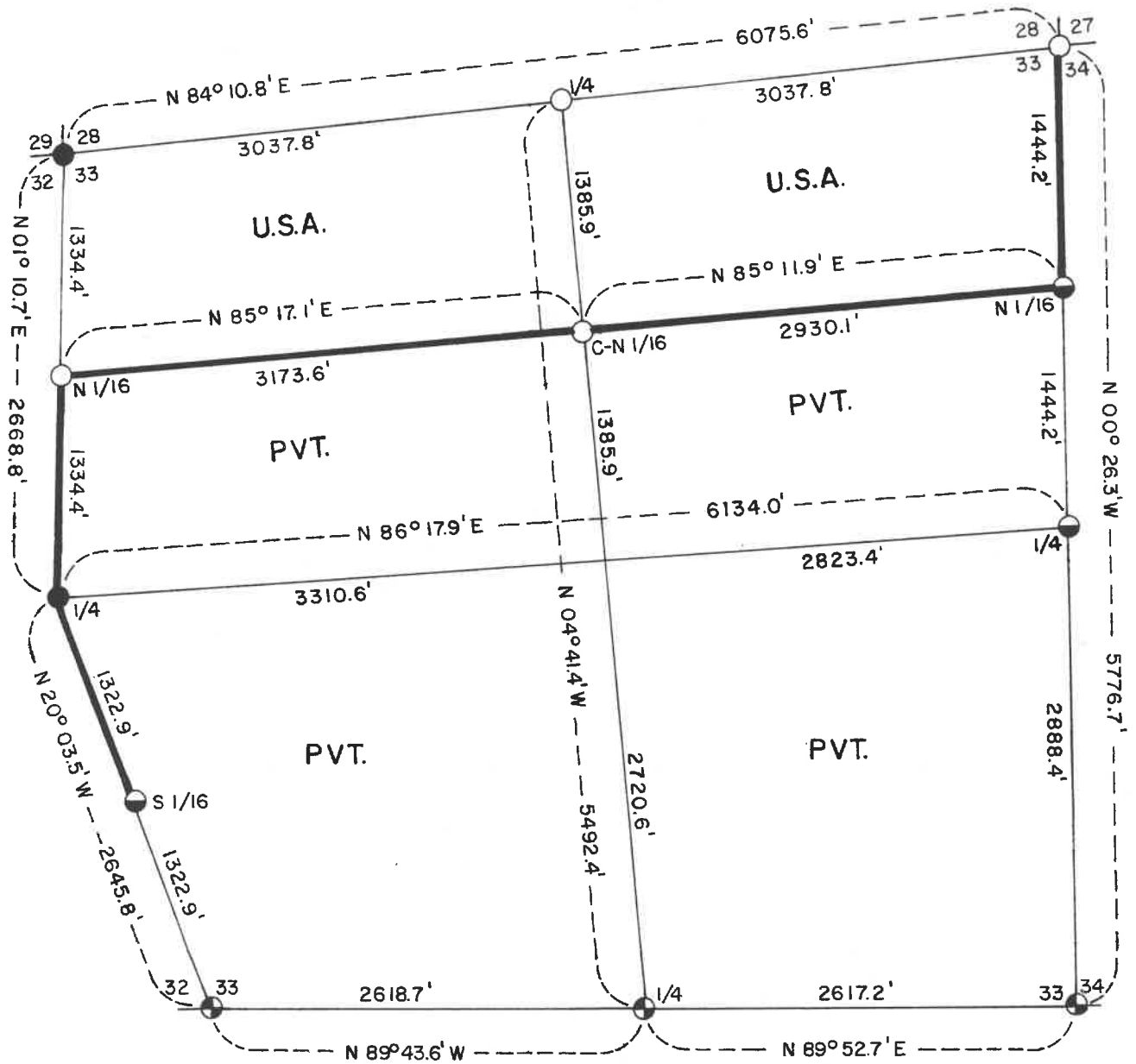
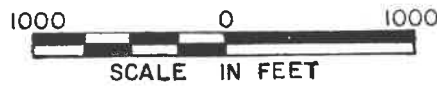
FOREST CO SURVEYOR

FILE # 41433-1982

DATE _____ BY _____

PLAT OF SURVEY FOR CERTIFIED LAND CORNER RESTORATION & ESTABLISHMENT

Being the Corners for the N1/2 of the NW1/4 and the N1/2 of the NE1/4 of Section 33, Township 41 North, Range 14 East, Fourth Principal Meridian FOREST COUNTY, WISCONSIN



LEGEND

- 2 1/2" Galvanized Pipe Monument 5' Long Filled with Concrete with Brass Cap.
- 2 1/2" Aluminum Pipe Monument 3' Long with an Aluminum Cap.
- ◐ 2 1/2" Aluminum Pipe Monument 5' Long with an Aluminum Cap.
- ⊕ General Land Office Resurvey Monument 1945.
- Boundary Line Marked to Standard

Stock No. 26273

Sheet 2 of 5

SURVEY NOTES

This survey of Section 33 was made by U.S. Department of Agriculture, Forest Service, to establish and mark controlling subdivision corners of U.S. Government land.

The original Government subdivision of this township was made in 1865. Subsequent resurvey of the South township line was done in 1945 and restoration of the Northwest section corner in 1965.

The U.S. Government acquired title to the lands in Section 33 in 1925.

The section corner common to Sections 27, 28, 33, and 34 was set on line between the section corner common to Sections 21, 22, 27, and 28 and the section corner common to Sections 33 and 34 on the Fourth Correction Line using the adjusted record distance from the section corner common to Sections 21, 22, 27, and 28. All the linear error in this meridian line was proportioned in the East section line of Section 33. From the known and found original corners in this fractional township that were tied in with this survey, I was able to determine that the East line of Section 33 was originally run from North to South closing on the South township line. By setting the east quarter corner of Section 33 at mid-point and on line between the section corner common to Sections 27, 28, 33 and 34 and the section corner common to Sections 33 and 34, the position of the quarter corner then agreed with the natural stream call in the original field notes.

To use double proportionate measurement in locating the position of the section corner common to Sections 27, 28, 33, and 34 would have greatly distorted the adjoining sections because of the excessive distance across the North section line of Section 33.

The center quarter position was not monumented by this survey because of the difficult terrain and brush that would have to be removed and the additional expenses that would be incurred by the U.S.D.A. Forest Service to locate the position.

CORNERS RECOVERED AND RESTORED1. Section corner common to Sections 28, 29, 32, and 33

See Certified Land Corner Restoration 5/25/65.

Corner references recovered:

Elm 5"	N36°E	60.50 Ft.
Elm 5"	S46°E	32.06 Ft.
Sugar Maple 12"	N89°W	29.51 Ft.
4x4 Wood Post	Southeast	2.0 Ft.

New corner references:

Aspen 8"	S52°W	21.53 Ft.
----------	-------	-----------

2. Quarter corner between Sections 28 and 33

Corner position is restored at mid-point and on line between the Northwest and the Northeast section corners of Section 33.

Corner references:

Sugar Maple 20"	N57°E	20.93 Ft.
Sugar Maple 17"	N15°W	39.69 Ft.
Steel Sign Post	Southwest	0.50 Ft.

Stock No. 26273

Sheet 3 of 5

3. Section corner common to Sections 27, 28, 33, and 34

Corner position is restored on line between the Northeast section corner of Section 28 and the Southeast section corner of Section 33 and on adjusted record distance from the Northeast section corner of Section 28.

Corner references:

Sugar Maple 6"	N70°E	4.44 Ft.
Sugar Maple 16"	S44°E	35.49 Ft.
Sugar Maple 16"	S13°W	43.36 Ft.
Hemlock 16"	N 8°W	31.24 Ft.
Steel Sign Post	Southeast	0.50 Ft.

4. Quarter corner between Sections 33 and 34

Corner position is restored at mid-point and on line between the Northeast and the Southeast section corners of Section 33.

Corner references:

Tamarack 9"	N84°E	53.68 Ft.
Cedar 10"	S53°W	30.15 Ft.
Cedar 8"	N74°W	31.93 Ft.
Steel Sign Post	Northwest	0.50 Ft.

5. Standard section corner common to Sections 33 and 34

Corner position is marked with a monument from the 1945 G.L.O. Dependent Resurvey.

Corner references recovered:

Sugar Maple 8"	N10°E	21.41 Ft.
Elm 5"	N34°E	49.49 Ft.
Elm 7"	N58°W	16.19 Ft.
Maple 6"	N23°W	24.05 Ft.
Elm 10"	N12°15'W	39.27 Ft.
Steel Sign Post	Southwest	0.75 Ft.

6. Standard quarter corner common to Section 33

Corner position was marked with a monument from the 1945 G.L.O. Dependent Resurvey.

Corner references recovered:

G.L.O. monument in deteriorated state (brass cap attached to 1 inch metal rod, concrete rotted)

Tamarack 8"	N40°30'W	17.82 Ft.
White Pine 21"	N63°30'E	48.18 Ft.

New corner references:

Replaced G.L.O. monument with a 2 1/2 inch aluminum monument 5 feet long with an aluminum cap.

Tamarack 10"	N22°E	24.95 Ft.
Fiberglass Sign Post	Southeast	1.0 Ft.

7. Standard section corner common to Sections 32 and 33

Corner position is marked with a monument from the 1945 G.L.O. Dependent Resurvey.

Corner references recovered:

Yellow Birch 25"	N29°E	70.62 Ft.
Sugar Maple 16"	N43°45'W	52.14 Ft.
Wood 4x4 Sign Post	Southeast	2.5 Ft.

Stock No. 26273

8. Quarter corner between Sections 32 and 33

See Certified Land Corner Restoration Certificate dated 6/11/68.

Corner references recovered:

Cedar 16"	N86°E	64.80 Ft.
Hemlock (snag) 11"	S69°E	11.84 Ft.
Maple (dead) 19"	N11°W	11.94 Ft.
Maple 12"	N63°W	35.69 Ft.
4x4 Wood Sign Post	West	2.0 Ft.

New corner references:

Hemlock 14"	S75°E	62.72 Ft.
-------------	-------	-----------

CORNERS ESTABLISHED1. North Sixteenth corner between Sections 32 and 33

Corner position is established at mid-point and on line between the Northwest section corner and the West Quarter corner of Section 33.

Corner references:

White Birch 10"	N72°E	25.15 Ft.
Spruce 6"	S03°E	25.11 Ft.
Steel Sign Post	Southwest	4.0 Ft.

2. Center North Sixteenth corner of Section 33

Corner position is established at mid-point and on line between the North Quarter corner and the Center Quarter corner position of Section 33.

Corner references:

Cedar 12"	N80°E	25.78 Ft.
Yellow Birch 10"	N55°30'W	10.86 Ft.
Steel Sign Post	Northwest	1.0 Ft.

3. North Sixteenth corner between Sections 33 and 34

Corner position is established at mid-point and on line between the Northeast section corner and the East Quarter corner of Section 33.

Corner references:

Tamarack 19"	N62°E	145.50 Ft.
Creek Flows S70°E	North	2.0 Ft.
Steel Sign Post	Southeast	1.0 Ft.

4. South Sixteenth corner between Sections 32 and 33

Corner position is established at mid-point and on line between the Southwest section corner and the West Quarter corner of Section 33.

Corner references:

Cedar 11"	S84°W	32.65 Ft.
Tamarack 10"	N42°W	18.17 Ft.
Steel Sign Post	Southeast	.50 Ft.

Stock No. 26273

SURVEYOR'S AFFIDAVIT

State of Wisconsin)
County of Forest) ss

I, William B. Cochrane, Land Surveyor, U.S.D.A. Forest Service, and a registered land surveyor in the State of Wisconsin, hereby certify that I have surveyed and subdivided Section 33, Township 41 North, Range 14 East, Fourth Principal Meridian, State of Wisconsin.

The plat map and the notes herewith are a correct representation of the land surveyed and divided. I have surveyed and subdivided said section in accordance with the rules for the survey of the public lands and with the statutes of the State of Wisconsin.

William B. Cochrane

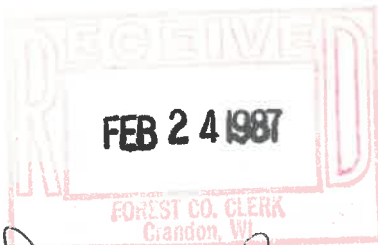
Land Surveyor, U.S.D.A. Forest Service
R.L.S. State of Wisconsin
Certificate S-1107

Date of Survey: 1982



Plat ready for filing:

[Signature]
District Ranger



*Dora C James
Forest Co. Clerk*