

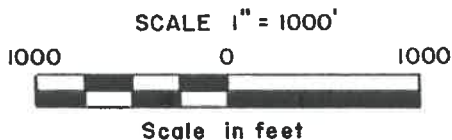
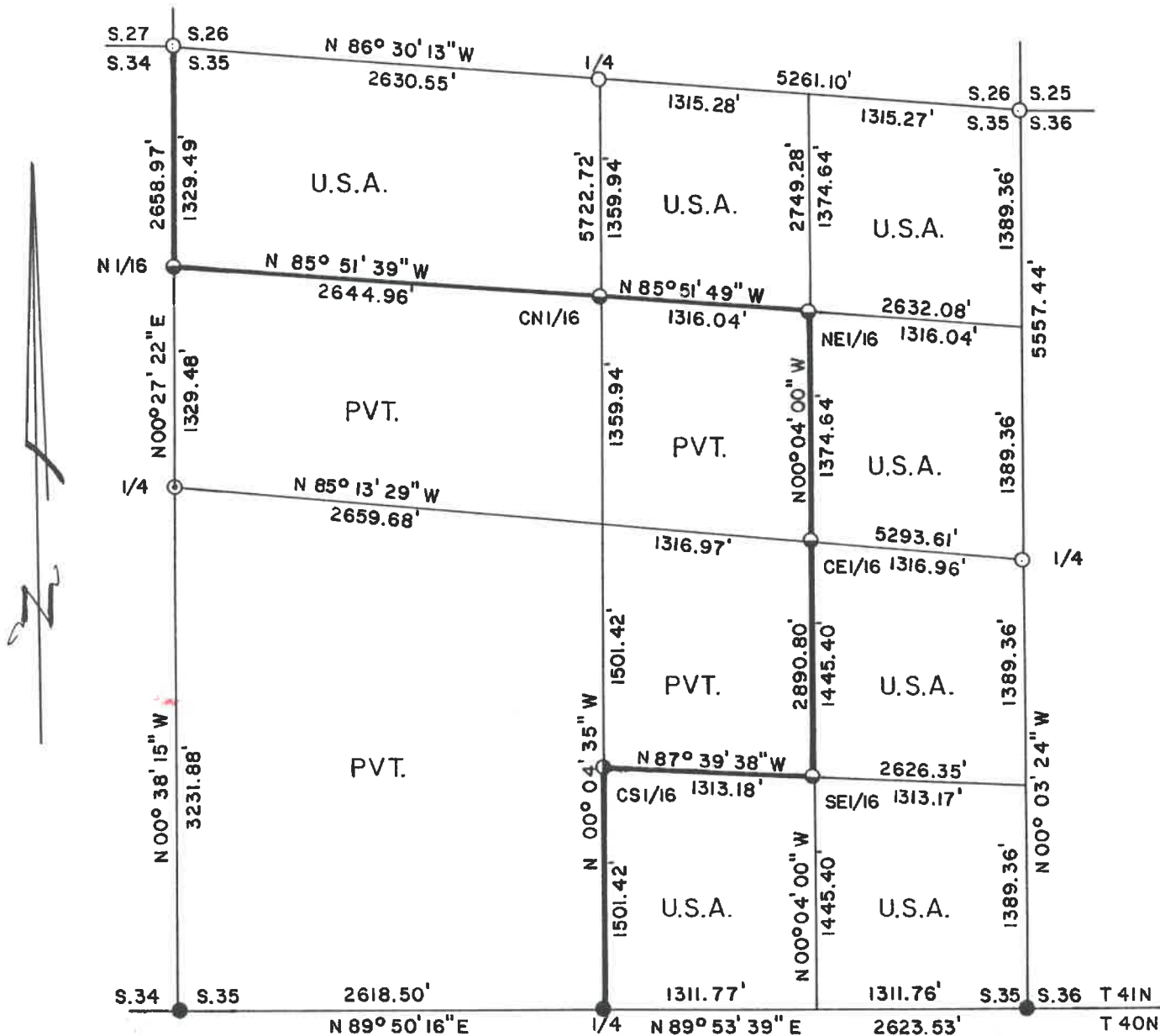
Stock No. 26273

FOREST CO SURVEYOR

FILE # 44435-1991

DATE \_\_\_\_\_ BY \_\_\_\_\_

PLAT OF SURVEY FOR CERTIFIED LAND CORNER RESTORATION AND ESTABLISHMENT  
 BEING THE CORNERS FOR THE N1/2-NE1/4, SE1/4-NE1/4, E1/2-SE1/4, SW1/4-SE1/4 AND N1/2-NW1/4 OF SECTION 35, T.41N. R.14E., FOURTH PRINCIPAL MERIDIAN  
 COUNTY OF FOREST, STATE OF WISCONSIN



LEGEND

- 2½ inch diameter aluminum pipe monument, 36" long with an aluminum cap stamped to identify the corner
- ⊙ 2½ inch diameter aluminum pipe monument, 60" long with an aluminum cap stamped to identify the corner
- 1 inch diameter aluminum pipe monument, 36" long with an aluminum cap stamped to identify the corner
- 1 inch diameter aluminum pipe monument, 60" long with an aluminum cap stamped to identify the corner
- 1945 Dependent Resurvey brass capped monument
- Boundary line marked to Forest Service standards

NOTE: Bearings are true bearings as referenced to a solar observation which was taken near the Northwest corner of Section 26.

Stock No. 26273

Sheet 2 of 5

SURVEY NOTES

This survey was made by Gary L. Pisoni, a Registered Land Surveyor in the State of Wisconsin, for the U.S.D.A., Forest Service, for the purpose of recovering, restoring, establishing, marking, and perpetuating the corners and boundary lines of U.S. Government Land on the perimeter and within Section 35, Township 41 North, Range 14 East, Fourth Principal Meridian, Forest County, State of Wisconsin, as shown on the plat map herewith.

The Original Government Sub-division of this township was done in 1865 by William E. Daugherty. The township lines were done in 1858 by Artemas Curtis. Dependent resurvey of the South boundary line of Section 35 done in 1945 by H. B. Crawford.

The bearings between corner positions are true bearings referenced to a solar observation which was taken near the Northwest corner of Section 26. All distances shown thereon are in feet and hundredths of feet. The control traverse was measured by use of electronic distance measuring equipment.

The accuracy of this survey exceeds the State requirements of 1 in 3000.

The field notes and a copy of the Plat of Survey are on file in the Forest Supervisor's Office at Rhinelander, Wisconsin.

CORNERS RECOVERED AND RESTORED1. Northwest Section Corner

Corner position restored by using double proportionate methods between Gaspardo Creek and the meander corner between Sections 22 and 23 and between the Southwest Section corner of Section 27 and the Southeast Section corner of Section 26.

Corner References:

White Spruce	9"	N 39°E	43.36 feet
Tamarack	10"	S 10°E	18.49 feet
Tamarack	12"	S 33°W	27.71 feet
White Spruce	14"	N 54°W	9.63 feet
Steel sign post		East	0.53 feet

2. North Quarter Corner

Corner position restored at midpoint and on line between the Northwest and Northeast Section corners of Section 35.

Corner References:

Balsam	8"	N 44°W	17.65 feet
Balsam	9"	N 11°E	19.12 feet
Black Cherry	7"	N 79°E	14.97 feet
White Spruce	13"	S 84°E	61.24 feet
Steel sign post		West	0.64 feet

3. Northeast Section Corner

Corner position restored from acceptance of a found yellow birch stump and a metal location tag located on an 18" maple as recorded and described on a U.S.F.S. 874 form, dated 8/9/34.

Corner References:

Sugar Maple	9"	N 49°E	11.18 feet
Sugar Maple	9"	S 02°W	25.46 feet
Sugar Maple	8"	N 86°W	3.38 feet
Sugar Maple	8"	N 32°W	20.50 feet
Steel sign post		North	0.69 feet

Stock No. 26273

Sheet 3 of 5

4. East Quarter Corner

Corner position restored at midpoint and on line between the Northeast and Southeast Section corners of Section 35.

Corner References:

Sugar Maple	8"	N 18°E	45.78 feet
Sugar Maple	7"	S 21°E	21.33 feet
Sugar Maple	11"	S 68°W	11.19 feet
Sugar Maple	7"	N 20°W	34.87 feet
Steel sign post		West	0.69 feet

5. Southeast Section Corner

Corner position is marked by a monument from the Dependent Resurvey in 1945 by Hugh Crawford.

1986 Corner References by William Cochrane U.S.F.S.:

Spruce	9"	N 25°E	7.63 feet
Spruce	13"	S 78°W	11.44 feet
Steel sign post		East	0.50 feet

6. South Quarter Corner

Corner position is marked by a monument from the Dependent Resurvey in 1945 by Hugh Crawford.

1977 Corner References by William Cochrane U.S.F.S.:

Tamarack	5"	N 37°E	36.14 feet
Steel sign post		N 20°E	0.4 feet

New Corner References:

Tamarack	5"	S 63°E	25.59 feet
Black Spruce	3"	S 01°E	36.76 feet
Tamarack	3"	S 84°W	28.92 feet

7. Southwest Section Corner

Corner position is marked by a monument from the Dependent Resurvey in 1945 by Hugh Crawford.

1945 Corner References found by William Cochrane RLS U.S.F.S.:

Cedar	14"	N 42°15'E	56.76 feet
Tamarack	12"	N 42°15'W	41.58 feet

1986 Corner Reference by William Cochrane RLS U.S.F.S.:

Steel sign post		North	1.00 feet
-----------------	--	-------	-----------

8. West Quarter Corner

Corner position restored by single proportionate measurement and on line from the extension of the bearing from the North of Gaspardo creek projecting it South. I proportioned from Gaspardo Creek Southward to the West quarter corner of Section 35 since this corner was so close to the creek. Refer to land corner certificate.

Corner References:

Tamarack	7"	N 59°W	10.60 feet
Black Spruce	4"	N 87°E	35.27 feet
Tamarack	8"	S 33°E	24.04 feet
Tamarack	7"	S 52°W	23.38 feet
Steel sign post		South	0.85 feet

Stock No. 26273

Sheet 4 of 5

CORNERS ESTABLISHED1. North Sixteenth Corners Between Sections 34 and 35

Corner position established at midpoint and on line between the Northwest Section corner and the West quarter corner.

Corner References:

Cedar	11"	N 51°W	38.96 feet
Cedar	11"	N 23°W	33.14 feet
Steel sign post		East	0.90 feet

2. Center North Sixteenth Corner

Corner position established at midpoint and on line between the North quarter corner and the Center quarter corner.

Corner References:

Tamarack	8"	S 51°E	18.02 feet
Spruce	11"	S 54°W	5.04 feet
Steel sign post		North	0.42 feet

3. Northeast Sixteenth Corner

Corner position established at the intersection of the straight lines between opposing sixteenth corner positions on the perimeter of the Northeast quarter of Section 35.

Corner References:

Spruce	13"	N 78°E	28.27 feet
Spruce	11"	N 73°W	7.58 feet
Steel sign post		North	0.44 feet

4. Center East Sixteenth Corner

Corner position established at midpoint and on line between the East quarter corner and the Center quarter corner.

Corner References:

Sugar Maple	12"	S 49°W	16.87 feet
Sugar Maple	12"	N 30°W	38.46 feet
Steel sign post		S 70°E	0.61 feet

5. Southeast Sixteenth Corner

Corner position established at the intersection of the straight lines between opposing sixteenth corner positions on the perimeter of the Southeast quarter of Section 35.

Corner References:

Sugar Maple	9"	S 52°E	22.66 feet
Sugar Maple	3"	N 35°E	18.59 feet
Steel sign post		North	0.54 feet

6. Center South Sixteenth Corner

Corner position established at midpoint and on line between the South quarter corner and the Center quarter corner.

Corner References:

Tamarack	5"	N 05°W	18.29 feet
Black Spruce	3"	S 51°E	23.31 feet
Steel sign post		West	0.44 feet

Stock No. 26273

Sheet 5 of 5

SURVEYOR'S CERTIFICATE

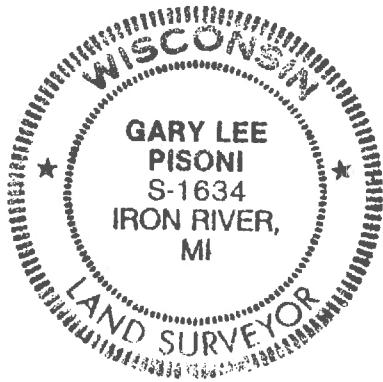
State of Wisconsin)ss  
County of Forest)

I, Gary L. Pisoni, a Cadastral Surveyor, and a Registered Land Surveyor in the State of Wisconsin, hereby certify that I have surveyed and sub-divided Section 35, Township 41 North, Range 14 East, Fourth Principal Meridian, State of Wisconsin.

The plat map and survey notes herewith are a correct representation of the land surveyed and divided. I have surveyed and sub-divided said section in accordance with the rules for the survey of public lands and with the statutes of the State of Wisconsin.

Date of Survey: 1991

Gary L. Pisoni  
Cadastral Surveyor  
R.L.S. State of Wisconsin  
Certificate S-1634



Survey requested by: W. Carr District Ranger Date 10/2/92

