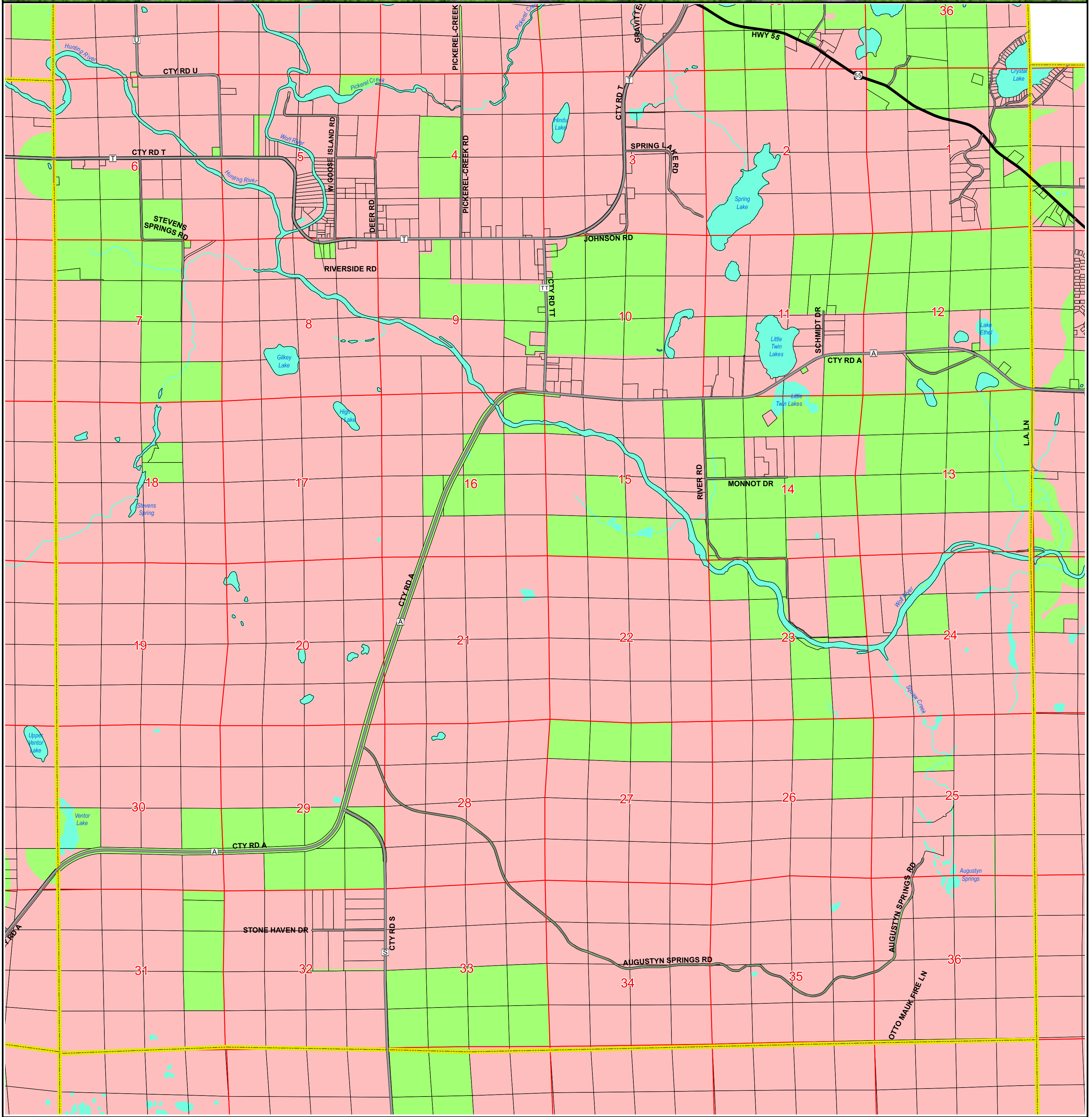
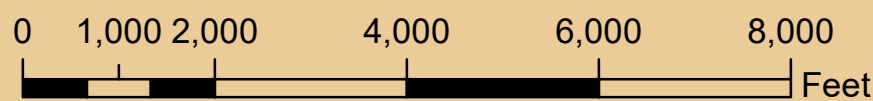
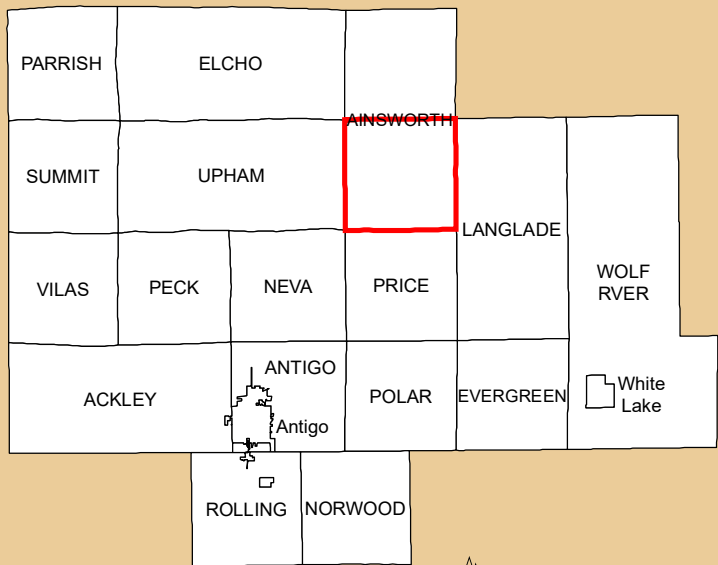


# Farmland Preservation Plan Map For Langlade County WI - T33N R12E - AINSWORTH



**Legend**

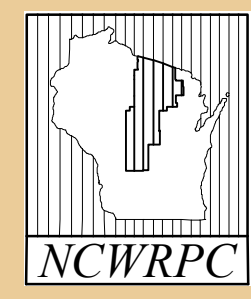
- US Highway
- State Highway
- County Highways
- Local Roads
- Section Lines
- Minor Civil Divisions
- Parcels
- Farmland Preservation Areas
- Planned Out
- Ag Enterprise Area\*
- Water



Source: WI DNR, Langlade County, NCWRPC  
 This map is neither a legally recorded map nor a survey and is not intended to be used as one. This drawing is a compilation of records, information and data used for reference purposes only. NCWRPC is not responsible for any inaccuracies herein contained.

**"If there is a conflict with other plan maps, the Farmland Preservation Plan map will supersede those other maps."**

Prepared By:  
**North Central Wisconsin Regional Planning Commission**



210 McClellan St., Suite 210, Wausau, WI 54403  
 715-849-5510 - [staff@ncwrpc.org](mailto:staff@ncwrpc.org) - [www.ncwrpc.org](http://www.ncwrpc.org)

**Date: 9/25/2024**