

Office of Forest County Clerk

received a duplicate copy of this survey 6-20-78

D. J. ...
Forest County Clerk

Sheet 1 of 6

LAND CORNER RESTORATION

Being Corners on the Township Line to Townships 33-34 North
and Corners on the Range Line to Townships 14-15 East
FOREST COUNTY, WISCONSIN

RECORD # 10900
LANGLADE COUNTY SURVEYORS OFFICE
DATE FILED: 8/31/16 BY: D. TRUSTY

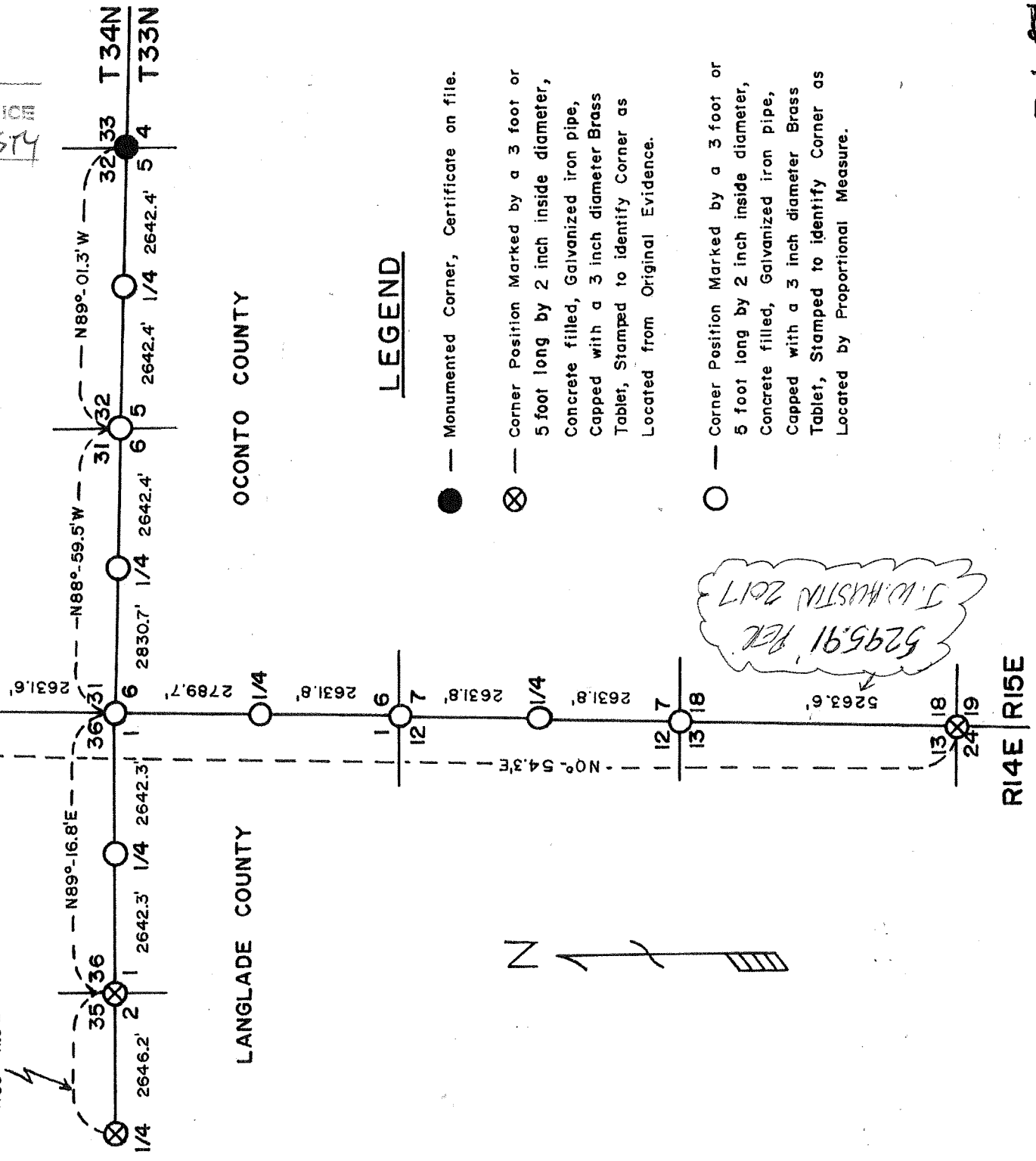


Scale in Feet

APRIL 2017 D. TRUSTY
MAP SUBJECT TO
CORRECTIONS BY
USFS

FOREST COUNTY

N89°-41.9'E

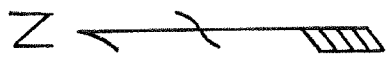


LANGLADE COUNTY

OCONTO COUNTY

LEGEND

- — Monumented Corner, Certificate on file.
- ⊗ — Corner Position Marked by a 3 foot or 5 foot long by 2 inch inside diameter, Concrete filled, Galvanized iron pipe, Capped with a 3 inch diameter Brass Tablet, Stamped to identify Corner as Located from Original Evidence.
- — Corner Position Marked by a 3 foot or 5 foot long by 2 inch inside diameter, Concrete filled, Galvanized iron pipe, Capped with a 3 inch diameter Brass Tablet, Stamped to identify Corner as Located by Proportional Measure.



5295.91' PER
J.D. TRUSTY 2017

R14E R15E

LAND CORNER RESTORATION

Being Corners on the Township Line to Townships 33-34 North
and Corners on the Range Line to Townships 14-15 East
FOREST COUNTY, WISCONSIN

SURVEY NOTES

This survey was made by the U.S. Department of Agriculture, Forest Service, for the purpose of corner restoration so as to provide the control for the subdivision of section 32, township 34 north, range 15 east, fourth principal meridian, Forest County, Wisconsin.

Polaris observations were taken near the north, south and west end and a solar observation near the northeast corner of section 32 for control on this traverse. The control traverse of this survey was adjusted for earth curvature.

The corner positions are marked by the monuments described in the legend.

CORNERS RECOVERED

1. Section Corner to Sections 4-5-32-33, T. 33-34 N., R. 15 E.
Corner position recovered and monumented by the Forest Service in 1973. Restoration certificate filed.
2. Section Corner to Sections 25-30-31-36, T. 34 N., R. 14-15 E.
Corner position recovered and monumented by the Forest Service in 1964. Restoration certificate filed.

CORNERS RESTORED

1. Section Corner to Sections 13-18-19-24, T. 33 N., R. 14-15 E.
Corner position restored from remains of original bearing trees and post point.
Corner references:

Sugar Maple 8"	N.77°E.	29.3 feet
Sugar Maple 8"	S.44°E.	37.8 feet
Sugar Maple 7"	S.61°W.	13.4 feet
Sugar Maple 10"	N.57°W.	38.9 feet
3" Square Chiseled in Boulder	N.16°W.	121.5 feet
Sign Post	S.45°W.	1.0 feet
2. Section Corner to Sections 1-2-35-36, T. 33-34 N., R. 14 E.
Corner position restored from remains of original bearing trees and post point.
Corner references:

Sugar Maple 5"	N.35°E.	27.3 feet
Sugar Maple 4"	S.10°E.	10.8 feet
Red Maple 6"	S.41°W.	28.2 feet
Basswood 11"	N.58°W.	27.4 feet
Sign Post	North	1.0 feet

LAND CORNER RESTORATION

Being Corners on the Township Line to Townships 33-34 North
and Corners on the Range Line to Townships 14 - 15 East
FOREST COUNTY, WISCONSIN

3. Township Corner to Sections 1-6-31-36, T. 33-34 N., R. 14-15 E.
Restored corner position by double proportionate measurement between section corner to sections 13-18-19-24, T. 33 N., R. 14-15 E. (3 miles south); section corner to sections 25-30-31-36, T. 34 N., R. 14-15 E. (1 mile north); section corner to sections 1-2-35-36 (1 mile west); and section corner to sections 4-5-32-33 (2 miles east).
Corner references:

Yellow Birch 14"	20.2 feet
Yellow Birch 6"	27.0 feet
Sugar Maple 6"	19.3 feet
Basswood 11"	9.0 feet
Sign Post	1.0 feet

4. Section Corner to Sections 5-6-31-32, T. 33-34 N., R. 15 E.
Restored corner position by single proportionate measurement and on line between the southwest corner of section 31 and southeast corner of section 32, T. 34 N., R. 15 E.
Corner references:

White Ash 9"	30.5 feet
Basswood 8"	27.2 feet
Basswood 8"	6.5 feet
Sugar Maple 9"	46.2 feet
Sign Post	1.0 feet

5. Section Corner to Sections 1-6-7-12, T. 33 N., R. 14-15 E.
Restored corner position by single proportionate measurement and on line between the southwest corner of section 18, and the northwest corner of section 6, T. 33 N., R. 15 E.
Corner references:

Basswood 9"	19.9 feet
Sugar Maple 7"	11.3 feet
Sugar Maple 10"	36.8 feet
Sugar Maple 6"	20.0 feet
Sign Post	1.0 feet

6. Section Corner to Sections 7-12-13-18, T. 33 N., R. 14-15 E.
Restored corner position by single proportionate measurement and on line between the northwest corner of section 6 and the southwest corner of section 18, T. 33 N., R. 15 E.
Corner references:

Sugar Maple 8"	7.1 feet
Sugar Maple 10"	13.7 feet
White Ash 13"	19.1 feet
Sugar Maple 7"	25.9 feet
Sign Post	1.0 feet

LAND CORNER RESTORATION

Being Corners on the Township Line to Townships 33-34 North
and Corners on the Range Line to Townships 14-15 East
FOREST COUNTY, WISCONSIN

7. Quarter Section Corner to Sections 2-35, T. 33-34 N., R. 14 E.
Corner position restored from remains of original bearing trees and
post point.
Corner references:

Basswood 6"	N. 89°E.	40.3 feet
Yellow Birch 9"	S. 29°E.	28.9 feet
Hemlock 12"	S. 42°W.	65.0 feet
Sugar Maple 12"	N. 5°W.	44.9 feet
Hemlock 14"	N. 63°E.	35.4 feet
(Local B.T.)		
Sign Post	S. 45°E.	1.0 feet

8. Quarter Section Corner to Sections 1-36, T. 33-34 N., R. 14 E.
Restored corner position by single proportionate measurement and on
line between southwest and southeast corner of section 36.
Corner references:

Black Ash 6"	N. 13°E.	24.5 feet
Basswood 5"	S. 3°E.	27.2 feet
Sugar Maple 10"	N. 77°E.	17.9 feet
Sign Post	North	1.0 feet

9. Quarter Section Corner to Sections 6-31, T. 33-34 N., R. 15 E.
Restored corner position by single proportionate measurement and on
line between the southwest & Southeast corners of section 31, T. 33-34 N.,
R. 15 E.
Corner References:

Basswood 9"	S. 21°E.	15.2 feet
Sugar Maple 6"	S. 43°W.	17.6 feet
Sugar Maple 5"	N. 24°W.	47.2 feet
Sign Post	North	1.0 feet

10. Quarter Section Corner to Sections 5-32, T. 33-34 N., R. 15 E.
Restored corner position by single proportionate measurement and on
line between the southwest and southeast corner of section 32,
T. 34 N., R. 15 E.
Corner references:

Sugar Maple 6"	N. 71°E.	10.2 feet
Basswood 7"	S. 33°E.	15.4 feet
Sugar Maple 8"	N. 58°W.	34.4 feet
Sign Post	North	1.0 feet

LAND CORNER RESTORATION

Being Corners on the Township Line to Townships 33-34 North
and Corners on the Range Line to Townships 14-15 East
FOREST COUNTY, WISCONSIN

11. Quarter Section Corner to Sections 31-36, T. 34 N., R. 14-15 E.
Restored corner position by single proportionate measurement and on
line between the southwest and northwest corners of section 31,
T. 34 N., R. 15 E.
Corner references:

Sugar Maple 8"	N.48 ⁰ E.	18.2 feet
Sugar Maple 8"	N.60 ⁰ W.	16.5 feet
Sign Post	North	1.0 feet

12. Quarter Section Corner to Sections 1-6, T. 33 N., R. 14-15 E.
Restored corner position by single proportionate measurement and on
line between the southwest and northwest corner of section 6,
T. 33 N., R. 15 E.
Corner references:

Sugar Maple 8"	N.55 ⁰ E.	24.6 feet
White Ash 7"	S.30 ⁰ W.	12.4 feet
Basswood 10"	N.63 ⁰ W.	36.0 feet
Sign Post	N.30 ⁰ E.	3.0 feet

13. Quarter Section Corner to Sections 7-12, T. 33 N., R. 14-15 E.
Restored corner position by single proportionate measurement and on
line between the southwest and northwest corners of section 7,
T. 33 N., R. 15 E.
Corner references:

Basswood 9"	S.75 ⁰ E.	27.0 feet
Sugar Maple 6"	S.88 ⁰ W.	24.0 feet
Sugar Maple 6"	N.23 ⁰ W.	27.7 feet
Sign Post	South	1.0 feet

The field notes and a copy of this survey are on file in the Forest
Supervisor's Office at Rhinelander, Wisconsin.

LAND CORNER RESTORATION

Being Corners on the Township Line to Townships 34-33 North
and Corners on the Range Line to Townships 14-15 East
FOREST COUNTY, WISCONSIN

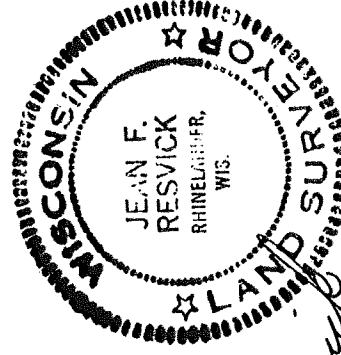
SURVEYOR'S AFFIDAVIT

STATE OF WISCONSIN) SS
COUNTY OF FOREST)

I, Jean F. Resvick, Cadastral Surveyor, U. S. Forest Service, and a registered land surveyor in the State of Wisconsin, hereby certify that I have supervised the survey of the township line from the section corner of sections 4-5-32-33, T. 33-34 N., R. 15 E; west to the quarter corner to sections 2-35, T. 33-34 N., R. 14 E. and the range line from section corner of sections 25-30-31-36, T. 34 N., R. 14-15 E.; south to the section corner to sections 13-18-19-24, T. 33 N., R. 14-15 E.

The plat and notes herein are a correct representation of the corners restored. I have reviewed this corner restoration survey in accordance with the rules for the survey of public lands and with the statutes of the State of Wisconsin.

The following U. S. Forest Service personnel, under my supervision, conducted this survey in the following capacities: Milo E. Stefan, Chief of Party; Thomas Tallier, Randy Sokolak, Michael Winfield, Chainmen. Plat by Milo E. Stefan.



Jean F. Resvick
Cadastral Survey, U. S. Forest Service
R.L.S. State of Wisconsin
Certificate S-802