

# MARATHON COUNTY U.S. PUBLIC LAND SURVEY MONUMENT LOCATION RECORD

4301001 9020 2003  
SECTION 1  
TOWNSHIP 30 N  
RANGE 10 E

012

LANDMARK  BENCHMARK: \_\_\_\_\_

CORNER LOCATION AND MONUMENT: N 1/4 COR. SEC 1

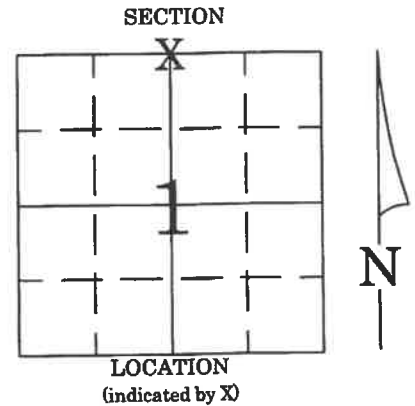
COUNTY COORDINATE: N \_\_\_\_\_, E \_\_\_\_\_

DATE OF SURVEY: 9-29-03 TEMPERATURE: °

SURVEY PARTY/COMPANY: C.J. NOWACZYK, E.K. PIERCE

FIELD BOOK NO. HARR. PAGE NO. 37

HARRISON  
~~CITY, VILLAGE, TOWN~~



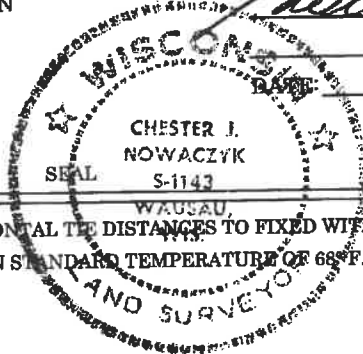
## BASIS FOR MONUMENT LOCATION:

(DESCRIBE METHOD OF SURVEY AND CORNER AUTHENTICATION)

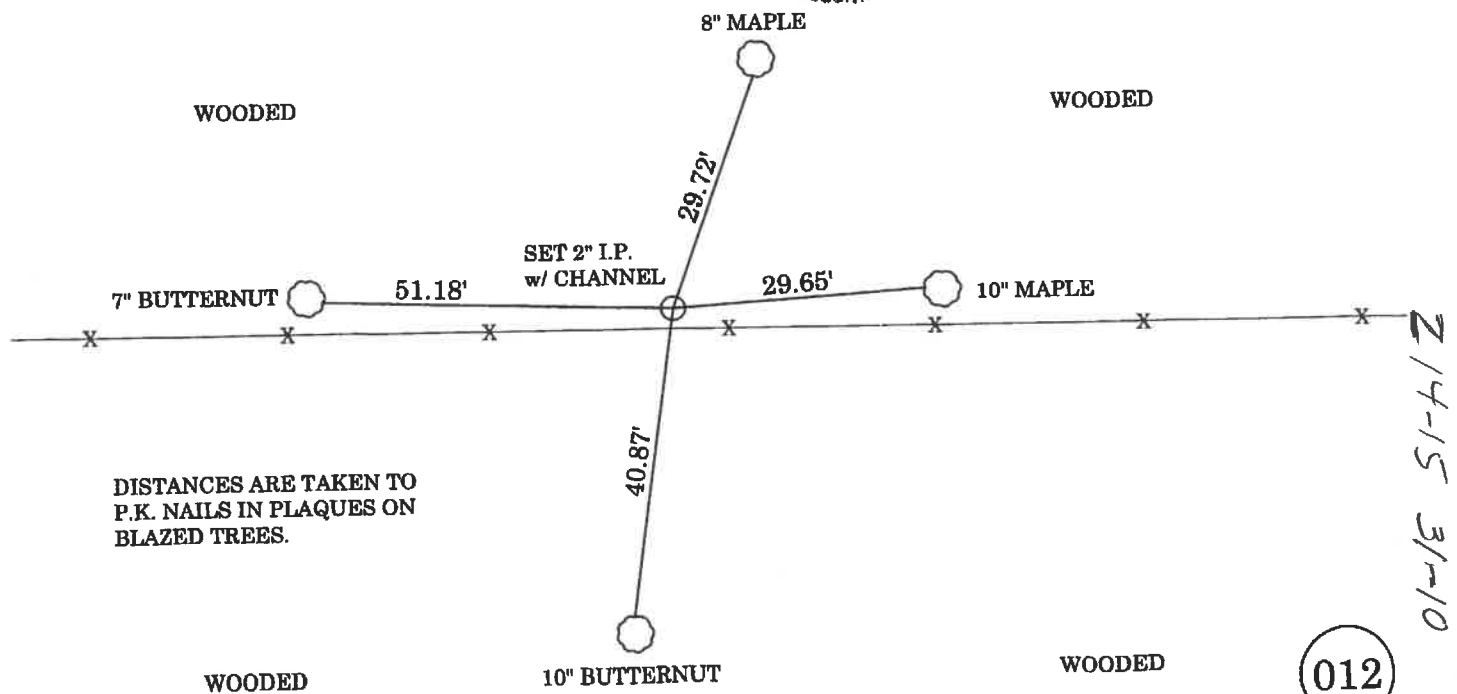
- FOUND
- SET
- RE-SET
- RE-TIED

RESEARCHED CORNER AND FOUND NO REMONUMENTATION NOTES FOR IT EVER BEING SET. DURING FIELD OBSERVATION, FOUND A FENCEPOST AND SEARCHED EAST OF POST ALONG APPARENT FENCE LINE. (FENCE WAS DOWN AND MISSING IN AREAS) SET CORNER AT SINGLE PROPORTION BETWEEN THE NW AND THE NE CORNERS OF SECTION 1. CORNER FELL 8 FEET NORTH OF APPARENT FENCE LINE AND 120 FEET EAST OF FOUND FENCEPOST.  
SET 2" IRON PIPE FOR CORNER WITH CHANNEL AND 4 TIES. TIES ARE TAKEN FROM P.K. NAIL IN PLAQUE ON BLAZED TREES.

CERTIFIED CORRECT



**TIE SKETCH:** SHOW MINIMUM OF FOUR (4) HORIZONTAL TIE DISTANCES TO FIXED WITNESS MONUMENTS. DESCRIBE ALL MONUMENTS FOUND OR SET. CORRECT ALL DISTANCES SHOWN STANDARD TEMPERATURE OF 68°F.



DISTANCES ARE TAKEN TO P.K. NAILS IN PLAQUES ON BLAZED TREES.

012