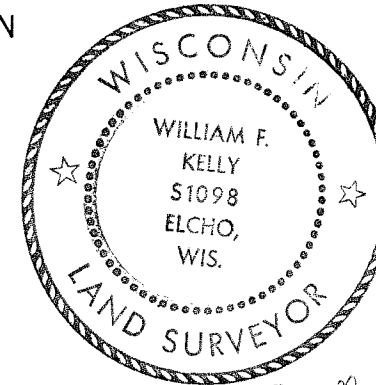


CERTIFIED LAND CORNER RESTORATION

Index No. E-1

State of Wisconsin }
 County of LANGLADE } ss.

History of original corner establishment:



William F. Kelly

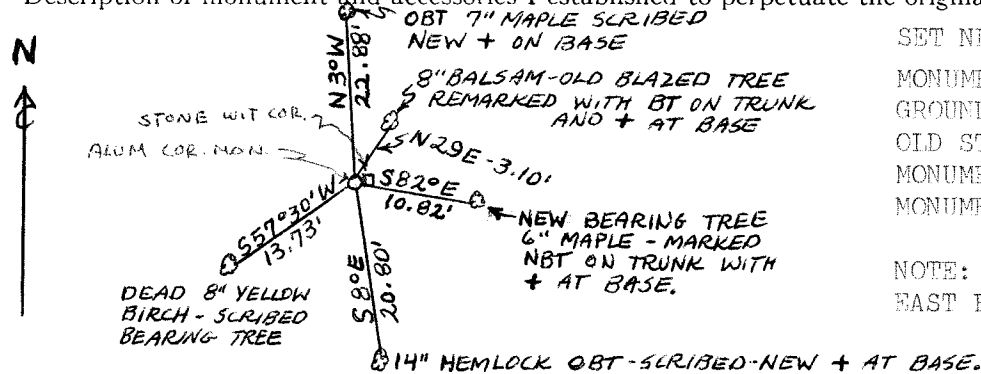
I, WILLIAM F. KELLY, do hereby certify that on the 5th day of FEBRUARY, 1925, I found evidence of the SECTION corner of SECTIONS 1, 6, 7, & 12 Township 31 North, Range 8 & 9 EAST, Fourth Principal Meridian, as described hereon; and that from this evidence I established a new monument and accessories as described hereon to perpetuate the original location of this corner.

Description of corner evidence found:
 LOCATED 6" x 6" GRANITE STONE WITH A + ON TOP. ALSO FOUND WITNESS TREES. STONE IS IN A SWAMP AND FROST HAD PUSHED IT UP INTO AN UNSTABLE POSITION.

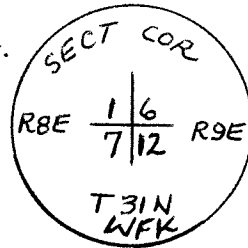
Resident witnesses:

WALTER KRAUSE

Description of monument and accessories I established to perpetuate the original location of this corner.



SET NEW ALUMINUM MONUMENT FLUSH WITH GROUND AND RESET THE OLD STONE NEXT TO THE MONUMENT.
 MONUMENT MARKED:



NOTE: BLAZED LINE RUNS NORTH AND EAST FROM CORNER

Dated at ELCHO, Wis., this 5th day of FEBRUARY, 1925.

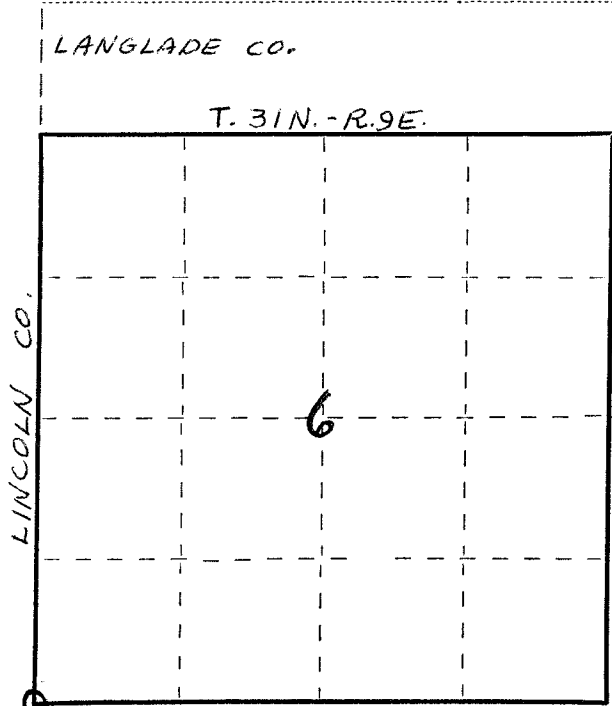
Signature William F. Kelly Title REGISTERED LAND SURVEYOR Registration No. S. 1098
 (County Surveyor, Registered Land Surveyor, or other duly authorized official)

Office of Register of Deeds, County of _____, I hereby certify that the within instrument was filed in this office for record on the _____ day of _____, 19____ at _____ o'clock _____ M.

(Register of Deeds)

By _____ Deputy

FORM 985 H. C. MILLER CO., MILWAUKEE



○ = Corner monument restored.

43/086/6000